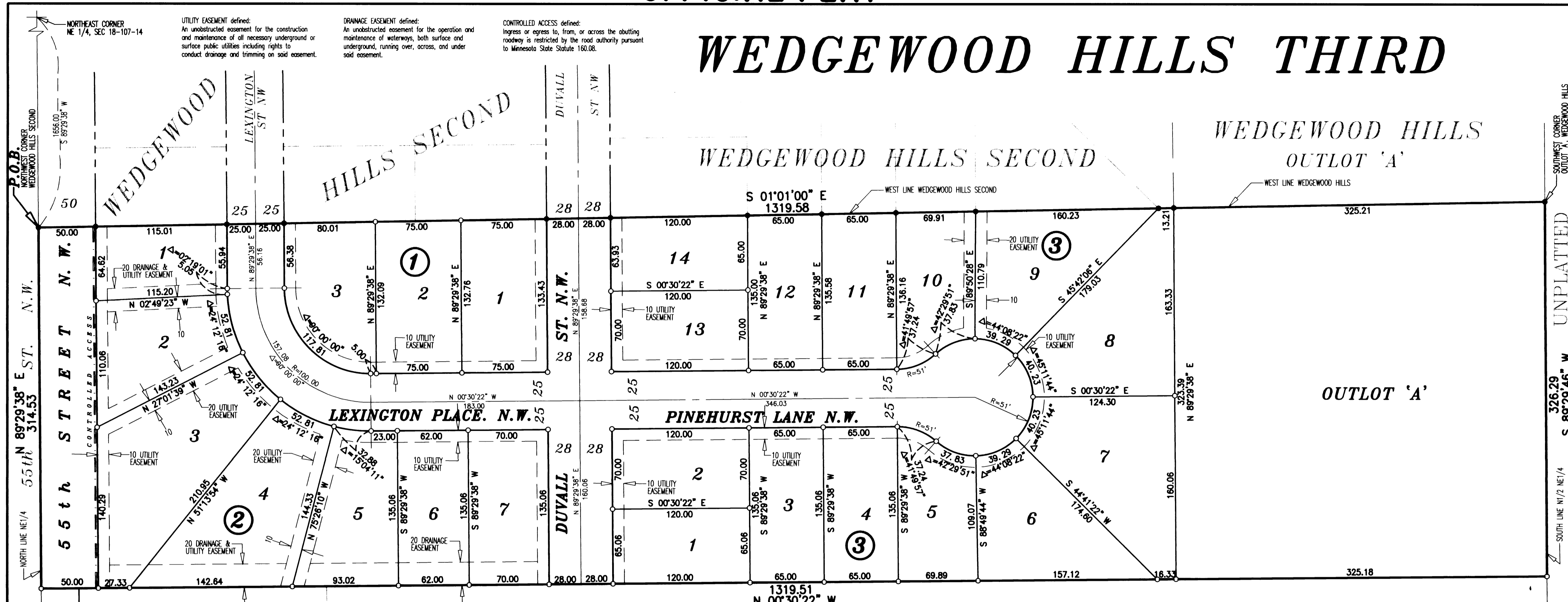


OFFICIAL PLAT

WEDGEWOOD HILLS THIRD



UTILITY EASEMENT defined: An unobstructed easement for the construction and maintenance of all necessary underground or surface public utilities including rights to conduct drainage and trimming on said easement.

DRAINAGE EASEMENT defined: An unobstructed easement for the operation and maintenance of waterways, both surface and underground, running over, across, and under said easement.

CONTROLLED ACCESS defined: Ingress or egress to, from, or across the abutting roadway is restricted by the road authority pursuant to Minnesota State Statute 160.08.

NORTHEAST CORNER NE 1/4, SEC 18-107-14

P.O.B. NORTHWEST CORNER WEDGEWOOD HILLS SECOND

SOUTHWEST CORNER OUTLOT 'A', WEDGEWOOD HILLS

UNPLATTED

UNPLATTED

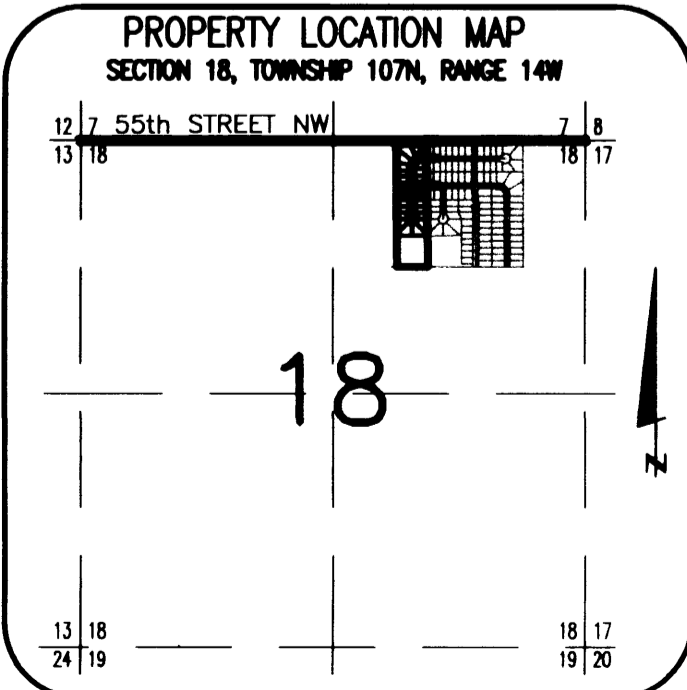
UNPLATTED

UNPLATTED

NOTE: ALL MONUMENTS SHOWN THUS: ○ ARE 5/8" I.D. CAPPED PIPES SET WITH LICENSE NO. 11622.

ALL MONUMENTS SHOWN THUS: ● ARE FOUND 5/8" PIPE UNLESS OTHERWISE NOTED.

SCALE 1" = 50'



SURVEYOR'S CERTIFICATE

I hereby certify that I have surveyed and platted the property described on this plat as WEDGEWOOD HILLS THIRD; that this plat is a correct representation of the survey; that all distances are correctly shown on the plat in feet and hundredths of a foot; that all monuments have been correctly placed in the ground as shown; that the outside boundary lines are correctly designated on the plat; and that there are no wet lands as defined in MS 505.02, Subd. 1, or public highways to be designated other than as shown thereon.

James E. Swanson, L.S. Minnesota License Number 11622

State of Minnesota County of Olmsted Dodge

The surveyor's certificate was subscribed and sworn to before me, a Notary Public, this 21 day of February, 2000.

Beth A. Davis, Notary Public, Olmsted County, Minnesota My Commission expires: 1-31-2005

COUNTY SURVEYOR

I certify that this plat has been checked mathematically and that the plat conforms to the applicable laws, this 29 day of February, 2000.

Edward P. Kvile, Olmsted County Surveyor

CITY APPROVAL

State of Minnesota County of Olmsted City of Rochester

I, Judy K. Scherr, City Clerk, in and for the City of Rochester, do hereby certify that on the 29th day of February, 2000, the accompanying plat was duly approved by the Common Council of the City of Rochester. In testimony thereof I have hereunto signed my name and affixed the seal of said City of Rochester, this 13th day of March, 2000.

Judy Kay Scherr, City Clerk

TAX STATEMENTS

Taxes Payable in the year 2000 on the land herein described have been paid, there are no delinquent taxes and transfer has been entered this 29th day of March, 2000.

Daniel Hall, Olmsted County Auditor/Treasurer

By Jennifer Gibson, Deputy

COUNTY RECORDER

DOCUMENT NUMBER A-838245

I hereby certify that this instrument was filed in the office of the County Recorder for record on this 29th day of March, 2000, at 12:12 o'clock P.M., and was duly recorded in the Olmsted County records.

By Daniel J. Heel, County Recorder

Lucan Murray, Deputy

UNPLATTED

INSTRUMENT OF DEDICATION:

KNOW ALL MEN BY THESE PRESENTS: That Leslie A. Lurken, a single person, owner and proprietor of the following described property situated in the City of Rochester, State of Minnesota, to wit:

That part of the North Half of the Northeast Quarter of Section 18, Township 107 North, Range 14 West, Olmsted County, Minnesota, described as follows:

Commencing at the northeast corner of the Northeast Quarter of said Section 18; thence South 89 degrees 29 minutes 38 seconds West, assumed bearing, along the north line thereof, 1656.00 feet to the northwest corner of WEDGEWOOD HILLS SECOND for the point of beginning; thence South 01 degree 01 minute 00 seconds East, along the west line of said WEDGEWOOD HILLS SECOND and along the west line of OUTLOT 'A', WEDGEWOOD HILLS, 1319.58 feet to the south line of said North Half of the Northeast Quarter; thence South 89 degrees 29 minutes 46 seconds West, along said south line, 326.29 feet; thence North 00 degrees 30 minutes 22 seconds West, 1319.51 feet to the north line of said Northeast Quarter; thence North 89 degrees 29 minutes 38 seconds East, along said north line, 314.53 feet to the point of beginning.

Containing 9.71 acres, more or less.

has caused the same to be surveyed and platted as WEDGEWOOD HILLS THIRD and does hereby donate and dedicate to be public for the public use forever the thoroughfares and cul-de-sac and also dedicates the easements as shown on this plat for drainage and utility purposes also.

In witness where of said Leslie A. Lurken, a single person, has caused these presents to be signed this 29 day of February, 2000.

Leslie A. Lurken

State of Minnesota County of Olmsted Dodge

The foregoing instrument was acknowledged before me this 29 day of February, 2000, by Leslie A. Lurken, a single person.

Beth A. Davis, Notary Public, Olmsted County, Minnesota My Commission expires: 1-31-2005



PREPARED BY: MCGHEE & BETTS, INC. CONSULTING ENGINEERS PLANNERS, LAND SURVEYORS ROCHESTER, MINNESOTA