

OFFICIAL PLAT

EDENBOROUGH ESTATES
COMMON INTEREST COMMUNITY NUMBER 133
SECOND SUPPLEMENTAL CIC PLAT

Surveyor's Certificate

I hereby certify that I have surveyed and platted the property described on this plat as EDENBOROUGH ESTATES, COMMON INTEREST COMMUNITY NUMBER 133, SECOND SUPPLEMENTAL CIC PLAT; that this is a correct representation of the survey; that all distances are correctly shown in the plat in feet and hundredths of a foot; that all monuments have been correctly placed in the ground as shown; that the outside boundary lines are correctly designated on the plat; and that there are no wet lands as defined in MS 505.02, Subd. 1, or public highways to be designated other than as shown.

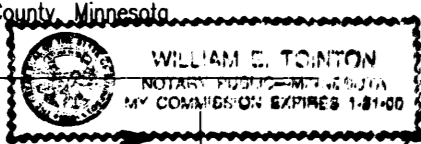
James E. Swanson
James E. Swanson, L.S.
Minnesota License Number 11622

State of Minnesota
County of Olmsted

The surveyor's certificate was subscribed and sworn to before me, a Notary Public, this 20th day of December, 1995.

William E. Tolton
Notary Public, Olmsted County, Minnesota

My commission expires



County Surveyor

I certify that this plat has been checked mathematically and that the plat conforms to the applicable platting laws, this 26 day of December, 1995.

Edward P. Kivick
Olmsted County Surveyor

Tax Statements

Taxes payable in the year 1995 on the land herein described have been paid, there are no delinquent taxes and transfer has been entered this 20 day of December, 1995.

Bob Ryan
Olmsted County Auditor/Treasurer

By *Lily Burke* Deputy

City Approval

State of Minnesota
County of Olmsted
City of Rochester

I, *Julian Kan Scherer* City Clerk in and for the City of Rochester, do hereby certify that on the 18 day of December, 1995, the accompanying plat was duly approved by the Common Council of the City of Rochester. In testimony thereof I have hereunto signed my name and affixed the seal of said City of Rochester this 28 day of December, 1995.

Judy Kay Scherer, Deputy
City Clerk

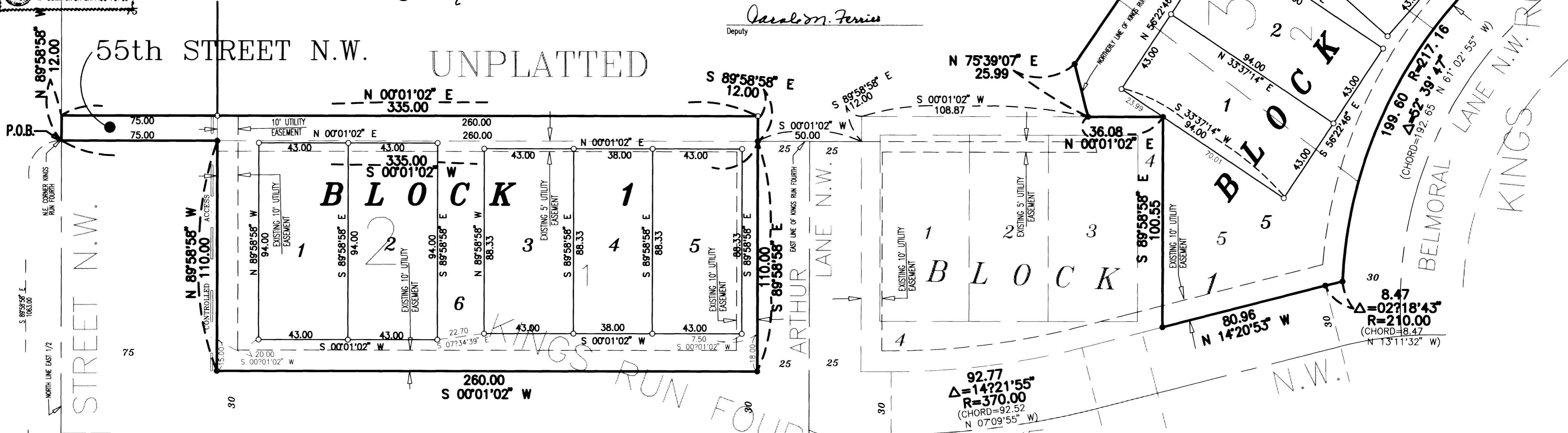
County Recorder

DOCUMENT NUMBER

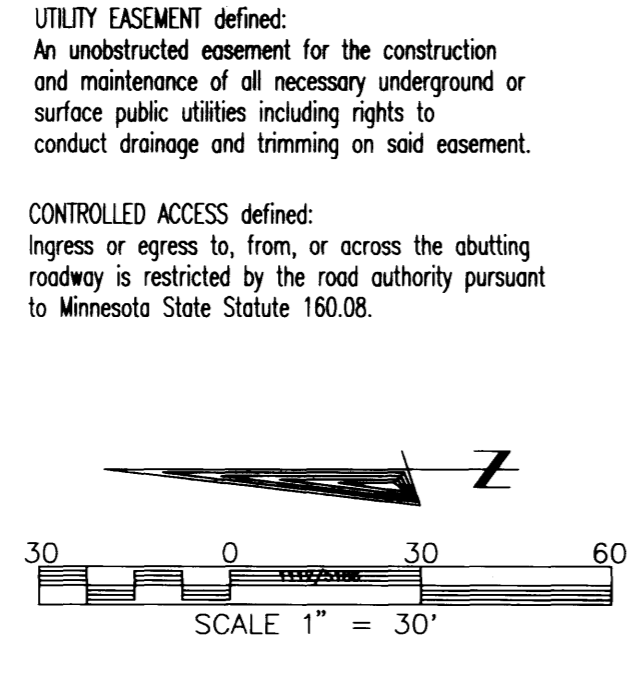
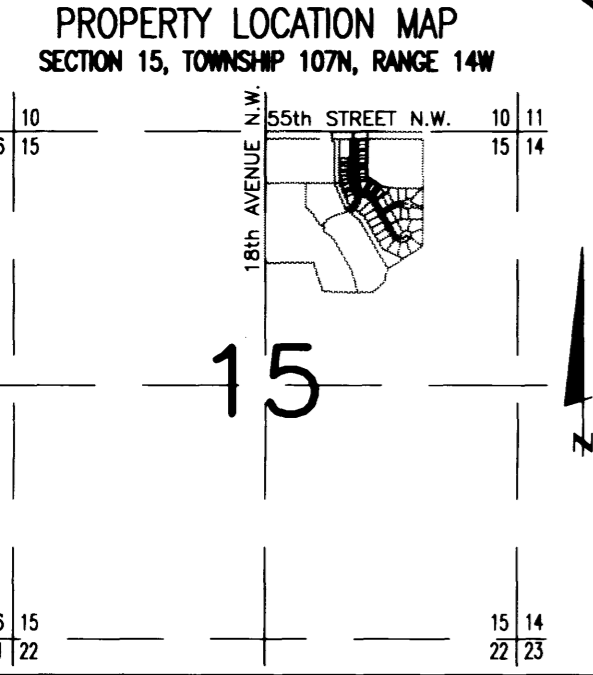
I hereby certify that this instrument was filed in the Office of the County Recorder for record on this 28 day of December, 1995, at 4:42 o'clock P.M. and was duly recorded in the Olmsted County records.

By *Mary J. Bellier*
County Recorder

Carol Ann Ferris
Deputy



NOTE:
ALL MONUMENTS SHOWN THUS: ○ ARE 5/8" I.D. CAPPED PIPES SET WITH REGISTRATION NO. 11622.
ALL MONUMENTS SHOWN THUS: ● ARE FOUND 5/8" PIPE.
BASIS OF BEARING SYSTEM:
ALL BEARINGS ARE IN RELATIONSHIP WITH THE NORTH LINE E. 1/2 OF SECTION 15-107-14, WHICH IS ASSUMED TO BE S89°58'58" E.



Instrument of Dedication
KNOW ALL MEN BY THESE PRESENTS: That Fullerton Properties, Inc., a Minnesota Corporation, vendor of a Contract for Deed, and Dakota of Rochester, Inc., a Minnesota Corporation, vendee of a Contract for Deed, owners and Proprietors, and Kasson State Bank, a Minnesota Corporation, mortgagee, of the following described property situated in the City of Rochester, State of Minnesota, to wit:
Lots 2 and 3, Block 3, KINGS RUN THIRD,
ALSO:
Lot 5, Block 1, EDENBOROUGH ESTATES, COMMON INTEREST COMMUNITY NUMBER 133, FIRST SUPPLEMENTAL CIC PLAT;
ALSO:
Lot 1, Block 2, KING'S RUN FOURTH,
ALSO:
That part of the West 5/8 of the East Half of Section 15, Township 107 North, Range 14 West, Rochester, Minnesota, described as follows:
Commencing at the northwest corner of the East Half of said Section 15; thence South 89 degrees 58 minutes 58 seconds East, assumed bearing, along the north line of said East Half, 1063.00 feet to the northeast corner of KING'S RUN FOURTH for the point of beginning; thence South 00 degrees 01 minute 02 seconds West along the east line of said KING'S RUN FOURTH, 335.00 feet; thence South 89 degrees 58 minutes 58 seconds East, 12.00 feet; thence North 00 degrees 01 minute 02 seconds East, 335.00 feet to the north line of the East Half of said Section 15; thence North 89 degrees 58 minutes 58 seconds West, along said north line, 12.00 feet to the point of beginning.
Containing in all 1.57 acres, more or less.
have caused the same to be surveyed and platted as EDENBOROUGH ESTATES, COMMON INTEREST COMMUNITY NUMBER 133, SECOND SUPPLEMENTAL CIC PLAT, and do hereby donate and dedicate to the public use forever the thoroughfare and also dedicate the easements as shown on this plat for drainage and utility purposes only.

DAKOTA OF ROCHESTER, INC.
In witness whereof said Dakota of Rochester, Inc., a Minnesota Corporation, has caused these presents to be signed by its proper officer this 26 day of Dec. 1995.
By *Roger A. Carlsen*
Roger A. Carlsen, Chief Financial Officer
State of Minnesota
County of Olmsted
The foregoing instrument was acknowledged before me this 26 day of Dec. 1995, by Roger A. Carlsen, Chief Financial Officer of Dakota of Rochester, Inc., on behalf of the corporation.
Math Manfred
Notary Public, Olmsted County, Minnesota
My commission expires
KASSON STATE BANK
In witness whereof said Kasson State Bank, a Minnesota Corporation, has caused these presents to be signed by its proper officers this 26 day of Dec. 1995.
By *Math Manfred* *Richard Wagner*

State of Minnesota
County of Dodge
The foregoing instrument was acknowledged before me this 26 day of Dec. 1995, by *Richard Wagner* and *Robert M. Purrier*, officers of Kasson State Bank, a Minnesota Corporation, on behalf of the Corporation.
Marilyn J. Brown
Notary Public, Dodge County, Minnesota
My commission expires
FULLERTON PROPERTIES, INC.
In witness said Fullerton Properties, Inc., a Minnesota Corporation has caused these presents to be signed by its proper officers this 20th day of December, 1995.
By *Robert M. Purrier* *Kathleen R. Anderson*
Robert M. Purrier, Vice President
Kathleen R. Anderson, Assistant Secretary
State of Minnesota
County of Hennepin
The foregoing instrument was acknowledged before me this 20th day of December, 1995, by Robert M. Purrier, Vice President, and Kathleen R. Anderson, Assistant Secretary, officers of Fullerton Properties, Inc., on behalf of the Corporation.
Wanda N. Mustonen
Notary Public, Hennepin County, Minnesota