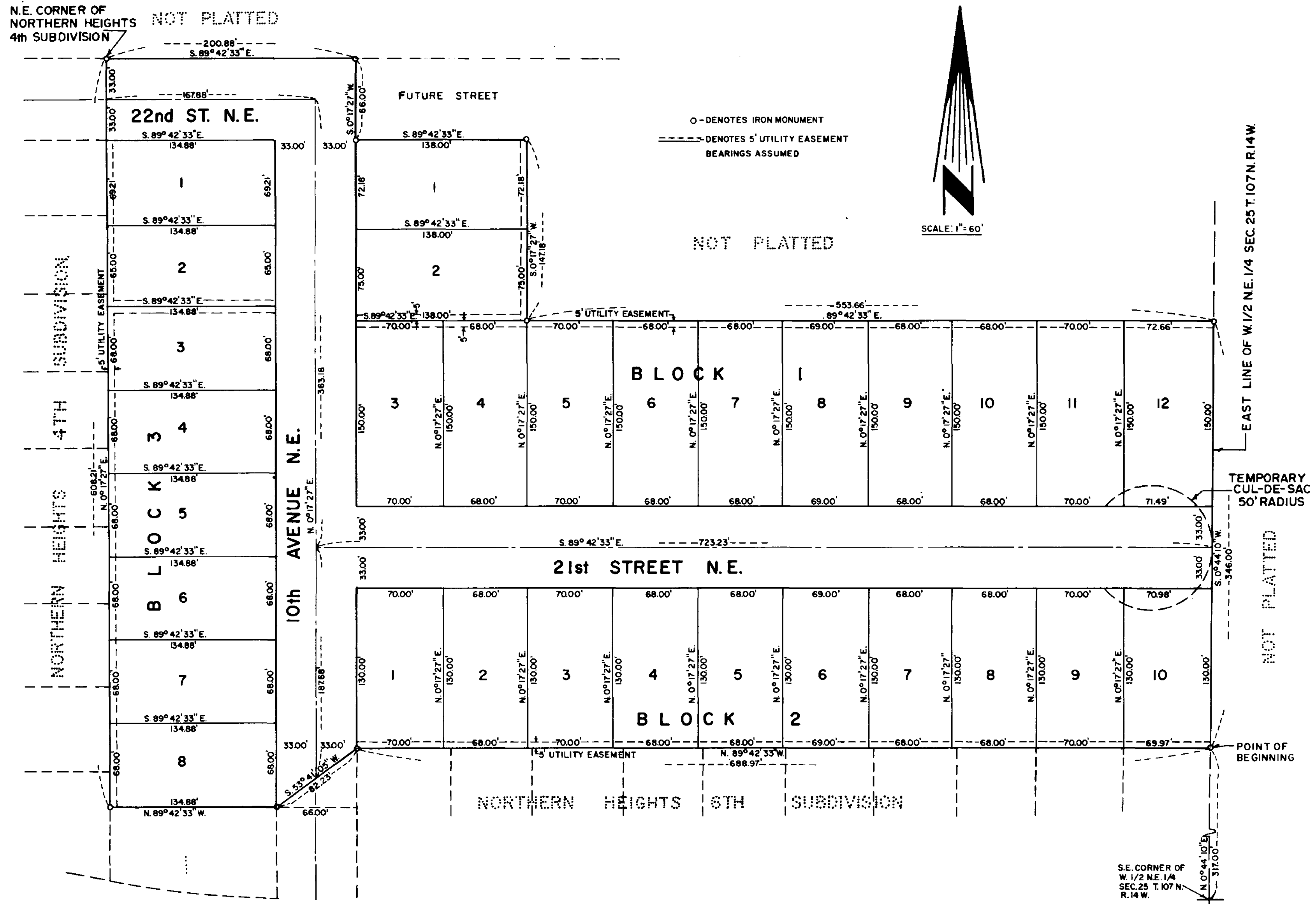


# NORTHERN HEIGHTS SEVENTH SUBDIVISION

OFFICIAL



### SURVEYOR'S CERTIFICATE

I, LEONARD M. SANKSTONE, REGISTERED LAND SURVEYOR, DO HEREBY CERTIFY THAT AT THE REQUEST OF ROCHESTER NORTHERN HEIGHTS, INC., A MINNESOTA CORPORATION, I HAVE SURVEYED AND PLATTED INTO LOTS, BLOCKS, STREETS, AVENUE AND EASEMENTS, AS SHOWN ON THE ACCOMPANYING PLAT ON WHICH THIS CERTIFICATE IS WRITTEN, THE FOLLOWING DESCRIBED TRACT:

THAT PART OF THE SOUTHWEST ONE-QUARTER OF THE NORTHEAST ONE-QUARTER (SW 1/4 NE 1/4) OF SECTION 25, TOWNSHIP 107 NORTH, RANGE 14 WEST, OLMDSTED COUNTY, MINNESOTA, DESCRIBED AS FOLLOWS: COMMENCING AT THE SOUTHEAST CORNER OF THE WEST ONE-HALF (W 1/2) OF THE NORTHEAST ONE-QUARTER (NE 1/4) OF SAID SECTION; THENCE ON AN ASSUMED BEARING OF N. 0°-44'-10" E. ALONG THE EAST LINE OF THE WEST ONE-HALF (W 1/2) OF THE NORTHEAST ONE-QUARTER (NE 1/4) OF SAID SECTION FOR A DISTANCE OF 317.00 FEET TO THE POINT OF BEGINNING OF THE TRACT TO BE DESCRIBED: THENCE N. 89°-42'-33" W. FOR A DISTANCE OF 688.97 FEET; THENCE S. 53°-41'-05" W. FOR A DISTANCE OF 82.23 FEET; THENCE N. 89°-42'-33" W. FOR A DISTANCE OF 134.88 FEET; THENCE N. 0°-17'-27" E. FOR A DISTANCE OF 608.21 FEET TO THE NORTH LINE OF 22ND STREET NORTHEAST, SAID POINT BEING THE NORTHEAST CORNER OF NORTHERN HEIGHTS FOURTH SUBDIVISION; THENCE S. 89°-42'-33" E. FOR A DISTANCE OF 200.88 FEET; THENCE S. 0°-17'-27" W. FOR A DISTANCE OF 66.00 FEET; THENCE S. 89°-42'-33" E. FOR A DISTANCE OF 138.00 FEET; THENCE S. 0°-17'-27" W. FOR A DISTANCE OF 147.18 FEET; THENCE S. 89°-42'-33" E. FOR A DISTANCE OF 553.66 FEET TO THE EAST LINE OF THE WEST ONE-HALF (W 1/2) OF THE NORTHEAST ONE-QUARTER (NE 1/4) OF SAID SECTION; THENCE S. 0°-44'-10" W. FOR A DISTANCE OF 346.00 FEET TO THE POINT OF BEGINNING.

AND I FURTHER CERTIFY THAT SAID PLAT IS A TRUE AND CORRECT RECORD OF THE SURVEY AND THAT ALL DISTANCES ARE CORRECTLY SHOWN IN FEET AND DECIMALS OF FEET, THAT MONUMENTS (IRON PINS) FOR THE GUIDANCE OF FUTURE SURVEYS HAVE BEEN PLACED ON THE GROUND AS SHOWN THUS (O), THAT THE OUTSIDE BOUNDARIES ARE CORRECTLY SHOWN ON THE PLAT, THAT THERE ARE NO WET LANDS EXCEPT AS SHOWN AND THAT SAID PLAT HAS NOT BEEN PREVIOUSLY PLATTED.

DATED THIS 12th DAY OF March, 1968 A.D.

*Leonard M. Sankstone*  
LEONARD M. SANKSTONE REG. NO. 5325

SUBSCRIBED AND SWORN BEFORE ME A NOTARY PUBLIC THIS 12th DAY OF March, 1968 A.D.

MY COMMISSION EXPIRES April 1, 1970 A.D.

*W. E. Anshung*  
NOTARY PUBLIC, OLMDSTED COUNTY, MINNESOTA

W. E. Anshung  
Notary Public, Olmsted County, Minn.  
My Commission Expires April 1, 1970

### ACKNOWLEDGEMENT

STATE OF MINNESOTA)  
COUNTY OF OLMDSTED ) SS.  
CITY OF ROCHESTER )

I, ELFREDA REITER, CITY CLERK IN AND FOR SAID CITY OF ROCHESTER, DO HEREBY CERTIFY THAT ON THE 15th DAY OF July, 1968 A.D., THE ACCOMPANYING AND ANNEXED PLAT WAS DULY APPROVED BY THE COMMON COUNCIL OF THE CITY OF ROCHESTER. IN TESTIMONY THEREOF, I HAVE HEREUNTO SIGNED MY NAME AND AFFIXED THE SEAL OF SAID CITY OF ROCHESTER THIS 9th DAY OF July, 1968 A.D.

*Elfreda Reiter*  
CITY CLERK OF THE CITY OF ROCHESTER, MINNESOTA

STATE OF MINNESOTA)  
COUNTY OF OLMDSTED ) SS. 310439

I HEREBY CERTIFY THAT THIS PLAT WAS FILED IN THIS OFFICE FOR RECORD ON THIS 11th DAY OF July, 1968 A.D., AT 12 O'CLOCK P.M.

*Harvey H. Leonard*  
REGISTER OF DEEDS  
OLMDSTED COUNTY, MINNESOTA

*Lloyd Engelsma*

### DEDICATION

WE, THE UNDERSIGNED, CERTIFY THAT WE ARE THE SOLE INTERESTED PARTIES IN THE TRACT OF LAND DESCRIBED IN THE FOREGOING SURVEYOR'S CERTIFICATE WHICH IS WRITTEN ON THE PLAT ON WHICH THIS INSTRUMENT IS WRITTEN, THAT WE HAVE CAUSED THE SAME TO BE SURVEYED AND PLATTED INTO LOTS, BLOCKS, STREETS, AVENUE AND EASEMENTS UNDER THE NAME OF NORTHERN HEIGHTS SEVENTH SUBDIVISION AS SHOWN BY SAID PLAT AND THAT WE DO HEREBY DEDICATE TO THE PUBLIC FOR THE PUBLIC USE: FOREVER THE STREETS AND AVENUE SHOWN THEREON, AND DO HEREBY GRANT TEMPORARY PUBLIC USE TO THE CUL-DE-SAC ADJACENT TO THE EAST BOUNDARY OF THIS PLAT AS SHOWN UNTIL SUCH TIME AS THIS STREET IS EXTENDED TO THE EAST, AND GRANT THE EASEMENTS SHOWN THEREON.

IN THE PRESENCE OF:

*Paul Brauning*

ROCHESTER NORTHERN HEIGHTS, INC.  
SIGNED BY:

*Dennis J. Pierce*  
DENNIS J. PIERCE, PRESIDENT  
ROCHESTER NORTHERN HEIGHTS, INC.  
A MINNESOTA CORPORATION

LYOYD ENGELSMA, SECRETARY  
ROCHESTER NORTHERN HEIGHTS, INC.  
A MINNESOTA CORPORATION

STATE OF MINNESOTA)  
COUNTY OF OLMDSTED ) S.S.

ON THIS 11th DAY OF April, 1968 A.D., BEFORE ME, A NOTARY PUBLIC IN AND FOR SAID COUNTY PERSONALLY APPEARED DENNIS J. PIERCE AND LLOYD ENGELSMA TO ME PERSONALLY KNOWN, WHO, BEING EACH BY ME DULY SWORN DID SAY THAT THEY ARE RESPECTIVELY THE PRESIDENT AND SECRETARY OF THE CORPORATION NAMED IN THE FOREGOING INSTRUMENT, AND THAT THE SEAL AFFIXED TO SAID INSTRUMENT IS THE CORPORATE SEAL OF SAID CORPORATION, AND THAT SAID INSTRUMENT WAS SIGNED AND SEALED IN BEHALF OF SAID CORPORATION BY AUTHORITY OF ITS BOARD OF DIRECTORS, AND DENNIS J. PIERCE AND LLOYD ENGELSMA ACKNOWLEDGE SAID INSTRUMENT TO BE THE FREE ACT AND DEED OF SAID CORPORATION.

*W. E. Anshung*  
NOTARY PUBLIC, OLMDSTED COUNTY, MINNESOTA

W. E. Anshung  
Notary Public, Olmsted County, Minnesota  
My Commission Expires Dec. 17, 1977  
MY COMMISSION EXPIRES Dec. 17, 1977

N.E. CORNER OF NORTHERN HEIGHTS 4th SUBDIVISION NOT PLATTED

O - DENOTES IRON MONUMENT  
--- DENOTES 5' UTILITY EASEMENT  
BEARINGS ASSUMED

SCALE: 1" = 60'

EAST LINE OF W 1/2 NE 1/4 SEC. 25 T. 107 N. R. 14 W.

TEMPORARY CUL-DE-SAC 50' RADIUS

NOT PLATTED

POINT OF BEGINNING

S.E. CORNER OF W 1/2 NE 1/4 SEC. 25 T. 107 N. R. 14 W.

### UTILITY EASEMENT DEFINED:

EASEMENT FOR CONSTRUCTION AND MAINTENANCE OF ALL NECESSARY OVERHEAD, UNDERGROUND OR SURFACE, PUBLIC AND PRIVATE UTILITIES, INCLUDING RIGHTS TO CONDUCT DRAINAGE AND TRIMMING ON SAID EASEMENT.

TAXES PAID AND TRANSFER ENTERED THE 11th DAY OF July, 1968 A.D.

*Paul Brauning*  
COUNTY AUDITOR

TAXES FOR THE YEAR 1968 ON LANDS DESCRIBED WITHIN ARE PAID.

*Karl H. Porter*  
COUNTY TREASURER