

OFFICIAL PLAT

THE HOMESTEAD

SURVEYOR'S CERTIFICATE

I hereby certify that I have surveyed and platted the property described on this plat as THE HOMESTEAD; that this plat is a correct representation of the survey; that all distances are correctly shown on the plat in feet and hundredths of a foot; that all monuments have been correctly placed in the ground as shown; that the outside boundary lines are correctly designated on the plat; and that there are no wet lands as defined in MS 505.02, Subd. 1, or public highways to be designated other than as shown thereon:

James E. Swanson
James E. Swanson, L.S.
Minnesota License Number 11622

State of Minnesota
County of Olmsted Dodge

The surveyor's certificate was subscribed and sworn to before me, a Notary Public, this 23 day of December, 1999.

Beth Davis
Notary Public, Olmsted County, Minnesota

My commission expires: 1-31-2000

COUNTY SURVEYOR



I certify that this plat has been checked mathematically and that the plat conforms to the applicable laws, this 23 day of December, 1999.

Edward P. Kusilek
Olmsted County Surveyor

CITY APPROVAL

State of Minnesota
County of Olmsted
City of Rochester

I, Valori Peterson, Deputy City Clerk, in and for the City of Rochester, do hereby certify that on the 30th day of September, 1999, the accompanying plat was duly approved by the Common Council of the City of Rochester. In testimony thereof I have hereunto signed my name and affixed the seal of said City of Rochester this 30th day of December, 1999.

Valori Peterson
City Clerk, Deputy

TAX STATEMENTS

Taxes payable in the year 1999 on the land herein described have been paid, there are no delinquent taxes and transfer has been entered this 30th day of December, 1999.

Daniel Hall
Olmsted County Auditor/Treasurer

By Dawn Sampson Deputy

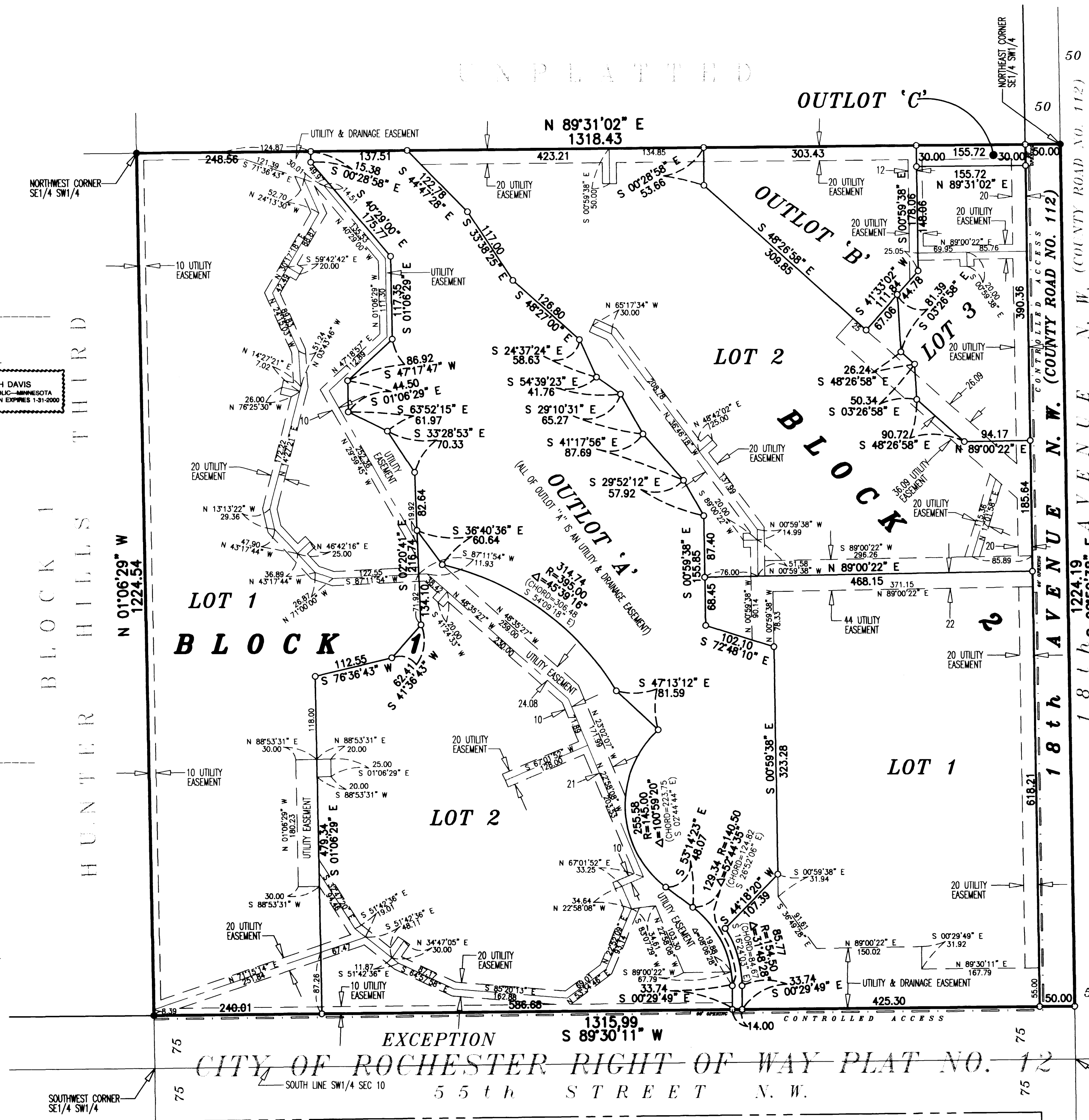
COUNTY RECORDER

DOCUMENT NUMBER A-832332

I hereby certify that this instrument was filed in the office of the County Recorder for record on this 30th day of December, 1999, at 2 o'clock P.M., and was duly recorded in the Olmsted County records.

By Daniel G. Hall
County Recorder

By Pam Hemeister
Deputy



INSTRUMENT OF DEDICATION

KNOW ALL MEN BY THESE PRESENTS: That Volunteers of America Care Facilities, a Minnesota non-profit Corporation, owner and proprietor, of the following described property situated in the County of Olmsted, State of Minnesota, to wit:

The Southeast Quarter of the Southwest Quarter of Section 10, Township 107 North, Range 14 West, Olmsted County, Minnesota, except the south 75.00 feet thereof.

Containing 37.02 acres more or less.

has caused the same to be surveyed and platted as THE HOMESTEAD, and does hereby donate and dedicate to the public for the public use forever the thoroughfare and also dedicate the easements as shown on this plat for drainage and utility purposes only.

In witness whereof said Volunteers of America Care Facilities, a Minnesota non-profit Corporation, has caused these presents to be signed by its proper officer this 23 day of December, 1999.

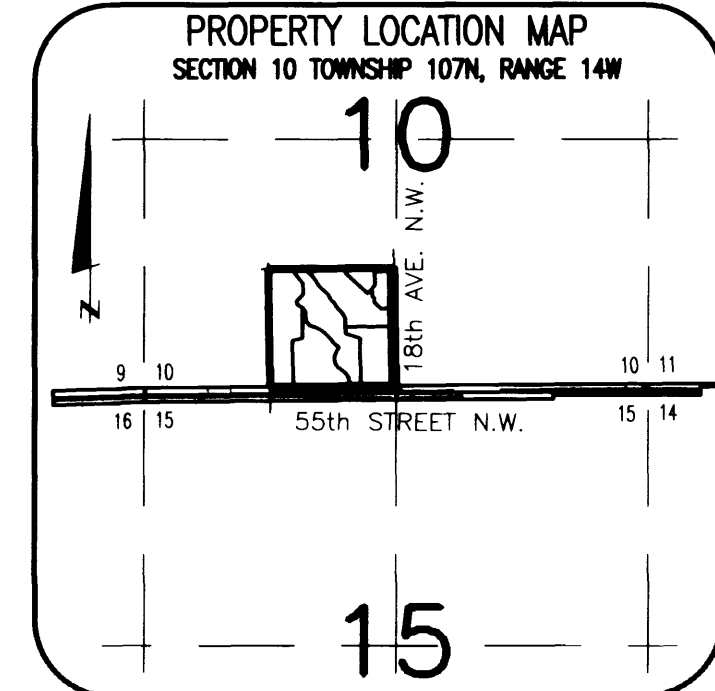
By: Ron Patterson
Ron Patterson, Senior Vice-President

State of Minnesota
County of Olmsted Hennepin

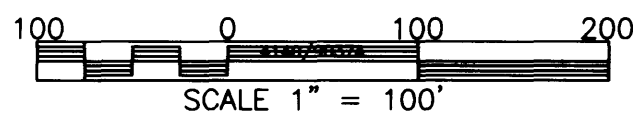
The foregoing instrument was acknowledged before me this 22 day of December, 1999, by Ron Patterson, Senior Vice-President of Volunteers of America Care Facilities, a Minnesota non-profit Corporation, on behalf of the corporation.

Sisa M. Blanche
Notary Public, Hennepin County, Minnesota

My commission expires: 1/31/05



NOTE: ALL MONUMENTS SHOWN THUS: O ARE 5/8" I.D. CAPPED PIPES SET WITH LICENSE NO. 11622. ALL MONUMENTS SHOWN THUS: ● ARE FOUND 5/8" PIPE UNLESS OTHERWISE NOTED. BASIS OF BEARING SYSTEM: ALL BEARINGS ARE IN RELATIONSHIP WITH THE SOUTH LINE SW1/4, SEC 10-107-14 WHICH IS ASSUMED TO BE S 89°30'11" W.



PREPARED BY: MCGHEE & BETTS, INC. CONSULTING ENGINEERS PLANNERS, LAND SURVEYORS ROCHESTER, MINNESOTA