

POSTIER'S FIRST SUBDIVISION. OLMSTED COUNTY, MINNESOTA.

Property lines shown thus
Measurements in feet and decimals.
Monuments shown thus
Scale 1 inch equals 100 feet.
1967.

John J. Kerr...County Surveyor.
Registered Land Surveyor No. 238.

OFFICIAL PLAT.

Approved as to water supply and sewage disposal
By *William P. Pelt* Engineer.
Rochester Olmsted County Health Unit.

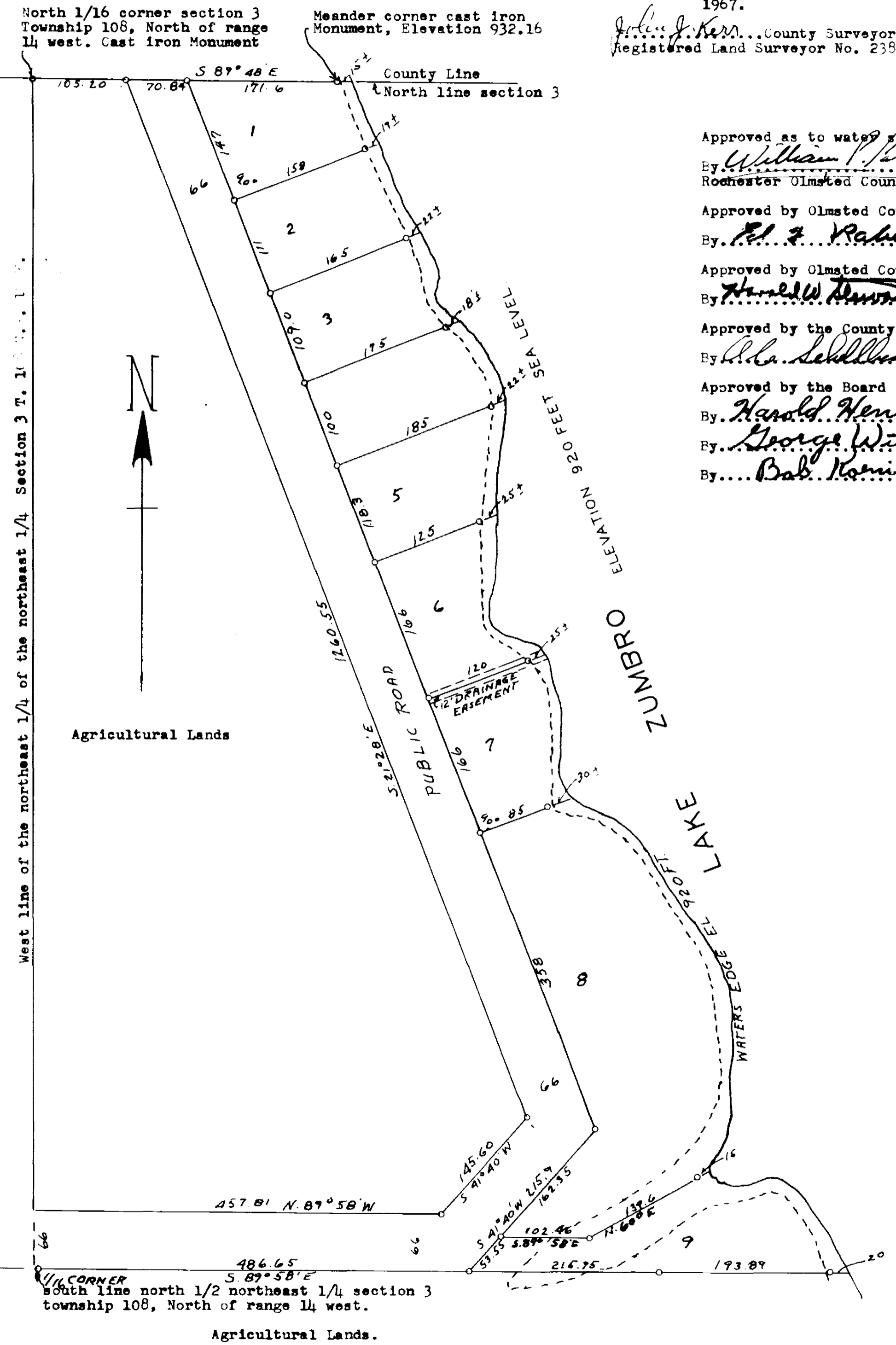
Approved by Olmsted County Planning Commission
By *Elmer F. Rabuhl* Chairman.

Approved by Olmsted County Advisory Planning Commission.
By *Harold W. Howard* Chairman.

Approved by the County Engineer
By *W. C. Sedlitz* Engineer

Approved by the Board of Supervisors Oronoco Township.
By *Harold Henke* Chairman.

By *George Wittich* Supervisor.
By *Bob Hennig* Supervisor.



DEDICATION:

Know all men by these presents that Karl H. Postier and Elaine H. Postier (his wife) Owners and proprietors of lands situate in the north 1/2 of the northeast 1/4 of section 3, Township 108, North of range 14 west in Olmsted County, Minnesota described as follows; The south 66 feet of the northwest 1/4 of the northeast 1/4 of said section and also commencing at the northwest corner of the northeast 1/4 of the northeast 1/4 of said section and running thence south 89°48' east along the north line thereof a distance of 105.20 feet for a place of beginning, Thence south 21°28' east a distance of 1260.55 feet, Thence south 41°40' west a distance of 145.60 feet, Thence north 89°58' west a distance of 457.81 feet to the west line of said northeast 1/4, Thence south a distance of 66 feet to the south line thereof, Thence south 89°58' east along said south line a distance of 917 feet to the waters edge of Lake Zumbro, Thence northwesterly along the waters edge of said lake to the north line of said section, Thence north 89°48' west along said section line a distance of 262.5 feet +- to the place of beginning, subject to flowage rights of the City of Rochester, That we have caused the same to be Surveyed, Staked and Platted into lots and public roads such subdivision to be known and designated as "POSTIER'S FIRST SUBDIVISION", That we do hereby donate and dedicate the

roads as shown on the annexed plat to the public for the public use as such forever, In testimony whereof we have here-un-to set our hands and seals. In the presence of .

Charles W. Postier Witness. *Karl H. Postier*
Ruth Burke Witness. *Elaine H. Postier*

ACKNOWLEDGEMENT.

State of Minnesota,
County of Olmsted, S. S.
On this 20 day of September, A.D. 1967 before me a notary public personally appeared Karl. H. Postier and Elaine H. Postier (his wife) to me known to be the persons described in and who executed the foregoing instrument and acknowledged that they executed the same as their free act and deed.

Paul H. Dorn Notary Public, Olmsted County, Minnesota.
My commission expires December 31, 1968.

SURVEYORS CERTIFICATE.

State of Minnesota,
County of Olmsted, S. S.
I, John J. Kerr County Surveyor in and for said County do hereby certify that I have Surveyed, Staked and Platted the property described on this plat as "POSTIER'S FIRST SUBDIVISION" That the plat is a correct representation of said survey as made, That all distances are shown correctly on said plat in feet and decimals of a foot, That monuments for the guidance of future surveys have been placed in the ground as shown on said plat, That the outside boundaries are correctly designated, That there are no wet lands or public highways to be designated other than as shown. Dated this 11 th day of September, A.D. 1967.

John J. Kerr County Surveyor.
Registered Land Surveyor No. 238.

State of Minnesota,
County of Olmsted, S. S.
I, Ross Browning County Auditor in and for said County do hereby certify that the attached plat was duly approved by the Board of County Commissioners at a meeting on this 21 day of February, A.D. 1968. In testimony whereof I have signed my name and affixed the seal of said County.

Ross Browning County Auditor.

Taxes paid for the year of 1968.

Karl H. Postier County Treasurer.

Taxes paid and transfer entered this 21 day of February, 1968

Ross Browning County Auditor.

State of Minnesota,
County of Olmsted, S. S.
Filed for record this 21 day of March, A.D. 1968, at 10-Clock P.M.
and recorded in book of plats, Page .

Henry J. Evans Register of Deeds.