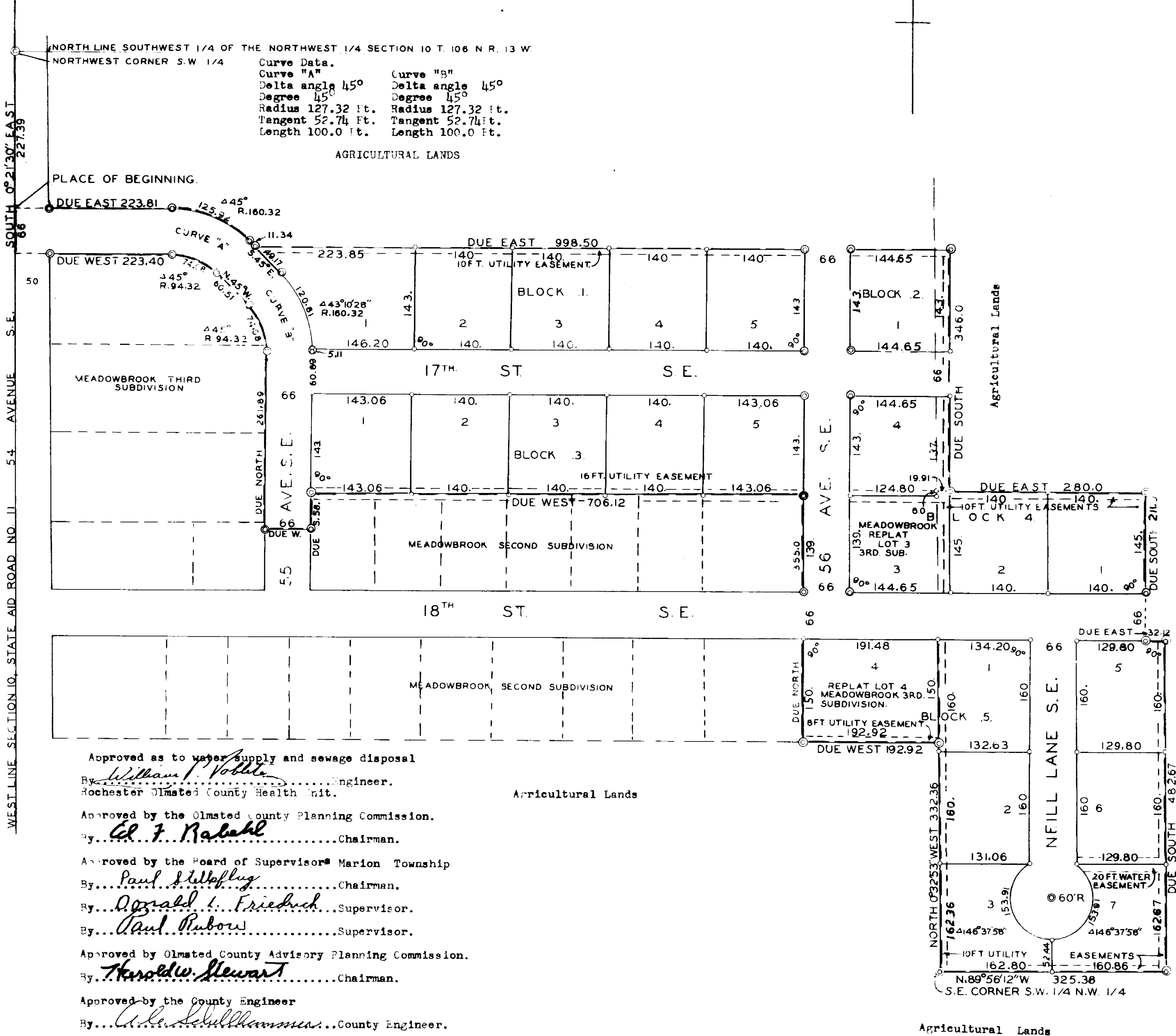


MEADOWBROOK FOURTH SUBDIVISION AND REPLAT OF LOTS 3 AND 4 MEADOWBROOK THIRD SUBDIVISION.

Boundaries shown thus
 Monuments shown thus
 Measurements in feet and decimals.
 Scale 1 inch equals 100 feet.
 1967

John J. Kerr County Surveyor.
 Registered Land Surveyor No. 238.

OFFICIAL PLAT.



ACKNOWLEDGEMENT.
 Know all men by these presents that Robert C. Neill and Virginia F. Neill (his wife) Owners and proprietors of lands situate in the south 1/2 of the northwest 1/4 of section 10, Township 106, North of range 13 west in Olmsted County, Minnesota described as follows; Commencing at the northwest corner of the south 1/2 of said section and running thence south 0°21'30" east along the west line thereof a distance of 227.39 feet for a place of beginning, Running thence due east a distance of 223.81 feet, Thence deflect to the right on a curve Delta angle 45° Radius 160.32 feet a distance of 125.92 feet, Thence tangent to said curve bearing south 45° east a distance of 11.34 feet, Thence due east a distance of 998.50 feet, Thence due south a distance of 346.0 feet, Thence due east a distance of 280.0 feet, Thence due south a distance of 211.0 feet, Thence due east a distance of 38.12 feet, Thence due south a distance of 482.67 feet, Thence north 89°56'12" west a distance of 325.38 feet, Thence north 0°32'53" west a distance of 332.36 feet, Thence due west a distance of 192.92 feet, Thence due north a distance of 355.0 feet, Thence due west a distance of 706.12 feet, Thence due south 58.0 feet, Thence due west a distance of 66 feet, Thence due north a distance of 261.87 feet, Thence deflect to the left on a curve Delta angle 45° Radius 94.32 feet a distance of 74.08 feet, Thence tangent to said curve North 45° west a distance of 60.51 feet, Thence deflect to the left on a curve delta angle 45° Radius 94.32 feet a distance of 74.08 feet, Thence due west a distance of 223.40 feet to the west line of said section, Thence north 0°21'30" west a distance of 66 feet to the place of beginning. That we have caused the same to be surveyed and platted into lots Blocks, Streets and Avenues such subdivision to be known and designated as "MEADOWBROOK FOURTH SUBDIVISION AND REPLAT OF LOTS 3 and 4 MEADOWBROOK THIRD SUBDIVISION", That we do hereby donate and dedicate to the public for the public use as such the streets and avenues as shown on the annexed plat and we do also grant easement for public utilities above ground and underground as shown on said plat for the use of the municipality or other public utilities for the installation and maintenance of facilities in and over said easements to serve adjacent or other premises in the vicinity. In witness whereof we have here-un-to set our hands and seals.
 In the presence of
Eitel Schmitt Witness.
Robert C. Neill
Virginia F. Neill
Rodney W. Walter Witness.

ACKNOWLEDGEMENT.
 State of Minnesota,
 County of Olmsted, S. S.
 On this 3rd day of October A.D. 1968 before me a notary Public Personally appeared Robert C. Neill and Virginia F. Neill (his wife) to me known to be the persons described in and who executed the foregoing instrument and acknowledged that they executed the same as their free act and deed.
Jack Fieck Notary Public, Olmsted County, Minnesota.
 My Commission expires April 24, 1971.

State of Minnesota,
 County of Olmsted, S. S.
 I, John J. Kerr County Surveyor in and for said County do hereby certify that I have surveyed and platted the property described in this plat as "MEADOWBROOK FOURTH SUBDIVISION AND REPLAT OF LOTS 3 and 4 MEADOWBROOK THIRD SUBDIVISION". That the plat is a correct representation of said survey as made, That all distances are shown in feet and decimals of a foot, That the outside boundaries are correctly shown and designated, That monuments for the guidance of future surveys have been placed in the ground as shown on said plat, That there are no wet lands or public highways to be designated other than as shown.
 Dated this 3rd Day of October A.D. 1967.
John J. Kerr County Surveyor.
 Registered Land Surveyor No. 238.

State of Minnesota,
 County of Olmsted, S. S.
 I, Ross Browning County Auditor in and for said County do hereby certify that the attached plat was duly approved by the Board of County Commissioners at a meeting held on this 21st day of February A.D. 1968. In testimony whereof I have signed my name and affixed the seal of said County.
Ross Browning County Auditor.
 Taxes paid for the year of 1968.
Paul H. Postier County Treasurer.
 Taxes paid and transfer entered this 23rd day of February A.D. 1968.
Ross Browning County Auditor.

State of Minnesota,
 County of Olmsted, S. S.
 Filed for record this 24th day of March A.D. 1968 at 3 o'clock P.M. and recorded in Book... of Plats Page...
Harry H. Evans Register of Deeds.
Paul Finstrom Deputy

Approved as to water supply and sewage disposal
 By *William F. Vohler* Engineer.
 Rochester Olmsted County Health Unit.
 Approved by the Olmsted County Planning Commission.
 By *Ed F. Rabahl* Chairman.
 Approved by the Board of Supervisor Marion Township
 By *Paul J. Haffley* Chairman.
 By *Donald L. Friedrich* Supervisor.
 By *Paul Rubow* Supervisor.
 Approved by Olmsted County Advisory Planning Commission.
 By *Harold W. Stewart* Chairman.
 Approved by the County Engineer
 By *W. L. Schullhammer* County Engineer.

Agricultural Lands