

RESUBDIVISION OF LOTS 1 THRU 6, BLOCK 35 COUNTRY CLUB MANOR NINTH ADDITION

SURVEYOR'S CERTIFICATE

I, LEONARD M. SANKSTONE, REGISTERED CIVIL ENGINEER AND LAND SURVEYOR, DO HEREBY CERTIFY THAT AT THE REQUEST OF GLOMAR ASSOCIATES, OWNERS, (A CO-PARTNERSHIP), AND OLMSTED COUNTY BANK AND TRUST COMPANY, A MINNESOTA CORPORATION, MORTGAGEE, I HAVE SURVEYED AND REPLATTED INTO LOTS AND EASEMENTS AS SHOWN ON THE ACCOMPANYING PLAT ON WHICH THIS CERTIFICATE IS WRITTEN, THE FOLLOWING DESCRIBED TRACT.

LOTS 1, 2, 3, 4, 5, AND 6 OF BLOCK 35, COUNTRY CLUB MANOR NINTH ADDITION TO THE CITY OF ROCHESTER, MINNESOTA.

AND I FURTHER CERTIFY THAT SAID PLAT IS A TRUE AND CORRECT RECORD OF THE SURVEY AND THAT ALL DISTANCES ARE CORRECTLY SHOWN IN FEET AND DECIMALS OF FEET; THAT MONUMENTS (IRON PINS) FOR THE GUIDANCE OF FUTURE SURVEYS HAVE BEEN PLACED ON THE GROUND AS SHOWN THUS (o); THAT THE OUTSIDE BOUNDARIES ARE CORRECTLY SHOWN ON THE PLAT; THAT THERE ARE NO WET LANDS THEREON, AND THAT SAID PLAT HAS BEEN PREVIOUSLY PLATTED AS COUNTRY CLUB MANOR NINTH ADDITION.

DATED THIS 17th DAY OF August, 1967 A.D.

Leonard M. Sankstone
LEONARD M. SANKSTONE REG. NO. 5325

SUBSCRIBED AND SWORN BEFORE ME A NOTARY PUBLIC THIS 17 DAY OF August, 1967 A. D.

Lorraine Delaney
NOTARY PUBLIC, OLMSTED COUNTY MINNESOTA

ACKNOWLEDGEMENT

STATE OF MINNESOTA)
COUNTY OF OLMSTED) S. S.

ON THIS 25 DAY OF August, 1967 A. D. BEFORE ME A NOTARY PUBLIC IN AND FOR SAID COUNTY PERSONALLY APPEARED LEONARD M. SANKSTONE AND WILMAN E. AGNEBERG TO ME PERSONALLY KNOWN, WHO, BEING EACH BY ME DULY SWORN DID SAY THAT THEY ARE THE SOLE AND ONLY PARTNERS OF GLOMAR ASSOCIATES AND WHO EXECUTED THE FOREGOING INSTRUMENT AND ACKNOWLEDGED THAT THEY EXECUTED THE SAME AS THEIR FREE ACT AND DEED.

Lorraine Delaney
NOTARY PUBLIC, OLMSTED COUNTY, MINNESOTA
MY COMMISSION EXPIRES Feb 2, 1973

STATE OF MINNESOTA)
COUNTY OF OLMSTED) S. S.

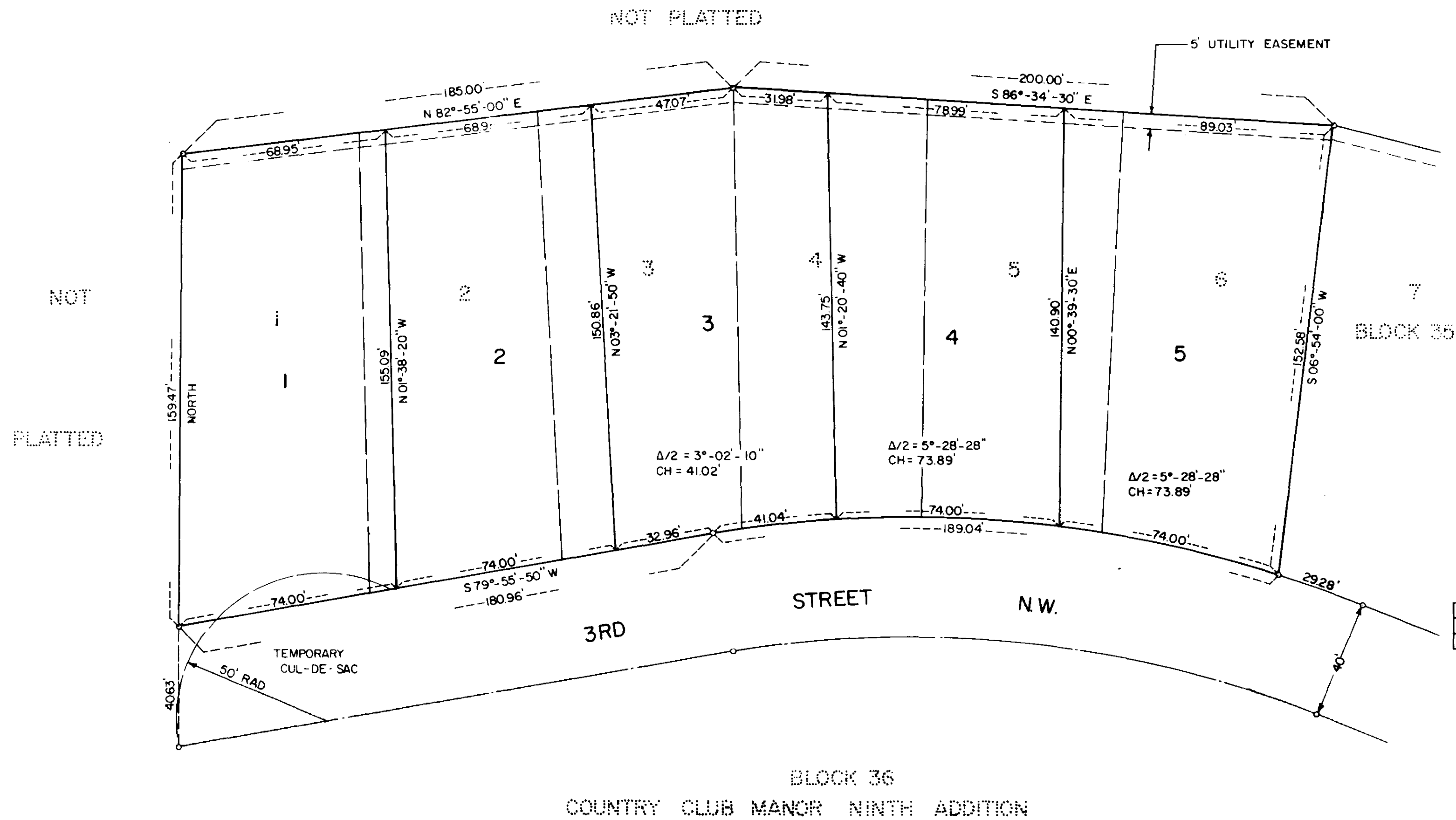
ON THIS 25 DAY OF August, 1967 A. D. BEFORE ME A NOTARY PUBLIC IN AND FOR SAID COUNTY PERSONALLY APPEARED EVERETT D. HUMKE AND MERLIN J. KNAUSS TO ME PERSONALLY KNOWN, WHO, BEING EACH BY ME DULY SWORN DID SAY THAT THEY ARE RESPECTIVELY THE VICE PRESIDENT, AND VICE PRESIDENT AND CASHIER OF OLMSTED COUNTY BANK AND TRUST COMPANY, A MINNESOTA CORPORATION, AND THAT THE SEAL AFFIXED TO SAID INSTRUMENT IS THE CORPORATE SEAL OF SAID CORPORATION, AND THAT SAID INSTRUMENT WAS SIGNED AND SEALED IN BEHALF OF SAID CORPORATION BY AUTHORITY OF ITS BOARD OF DIRECTORS AND SAID EVERETT D. HUMKE AND MERLIN J. KNAUSS ACKNOWLEDGE SAID INSTRUMENT TO BE THE FREE ACT AND DEED OF SAID CORPORATION.

Lorraine Delaney
NOTARY PUBLIC, OLMSTED COUNTY, MINNESOTA
MY COMMISSION EXPIRES February 2, 1973

STATE OF MINNESOTA)
COUNTY OF OLMSTED)
CITY OF ROCHESTER)

I, ELFREDA REITER, CITY CLERK IN AND FOR SAID CITY OF ROCHESTER, DO HEREBY CERTIFY THAT ON THE 16th DAY OF October, 1967 A. D., THE ACCOMPANYING AND ANNEXED PLAT WAS DULY APPROVED BY THE COMMON COUNCIL OF THE CITY OF ROCHESTER. IN TESTIMONY THEREOF, I HAVE HEREUNTO SIGNED BY NAME AND AFFIXED THE SEAL OF SAID CITY OF ROCHESTER THIS 23rd DAY OF October, 1967 A. D.

Elfreda Reiter
CITY CLERK OF THE CITY OF ROCHESTER
MINNESOTA



3RD STREET CURVE DATA				
Δ	D	R	T	L
32°48'-10"	16°-30'	347.25'	100.57'	195.77'

DEDICATION

WE, GLOMAR ASSOCIATES, A PARTNERSHIP CONSISTING OF LEONARD M. SANKSTONE AND WILMAN E. AGNEBERG AS SOLE AND ONLY PARTNERS, OWNERS; AND OLMSTED COUNTY BANK AND TRUST COMPANY, A MINNESOTA CORPORATION, MORTGAGEE, CERTIFY THAT WE ARE THE SOLE INTERESTED PARTIES IN THE TRACT OF LAND DESCRIBED IN THE FOREGOING SURVEYOR'S CERTIFICATE WHICH IS WRITTEN ON THE PLAT ON WHICH THIS INSTRUMENT IS WRITTEN, THAT WE HAVE CAUSED THE SAME TO BE PLATTED INTO LOTS AND EASEMENTS UNDER THE NAME OF RESUBDIVISION OF LOTS 1 THRU 6, BLOCK 35, COUNTRY CLUB MANOR NINTH ADDITION AS SHOWN BY THE SAID PLAT AND THAT WE DO HEREBY GRANT THE EASEMENTS SHOWN THEREON.

IN THE PRESENCE OF

GLOMAR ASSOCIATES

Francis Strood

BY *Leonard M. Sankstone*
PARTNER

AND

Lorraine Delaney

Wilman E. Agneberg
PARTNER

OLMSTED COUNTY BANK AND TRUST COMPANY

Lorraine Delaney

BY *Everett D. Humke*
ITS VICE PRESIDENT

AND

Lorraine Delaney

Merlin J. Knauss
ITS VICE PRESIDENT AND CASHIER

UTILITY EASEMENT DEFINED:
EASEMENT FOR CONSTRUCTION AND MAINTENANCE OF ALL NECESSARY OVERHEAD, UNDERGROUND OR SURFACE, PUBLIC AND PRIVATE UTILITIES, INCLUDING RIGHTS TO CONDUCT DRAINAGE AND TRIMMING ON SAID EASEMENT.

TAXES PAID AND TRANSFER ENTERED THE 29th DAY OF August, 1967 A. D.

Paul Sankstone
COUNTY AUDITOR
William Wilson, Deputy

TAXES FOR THE 1967 ON LANDS DESCRIBED WITHIN ARE PAID.

Karl H. Postler
COUNTY TREASURER
Edwin Mansberger, Deputy

STATE OF MINNESOTA)
COUNTY OF OLMSTED) S. S. 15232

I HEREBY CERTIFY THAT THIS PLAT WAS FILED IN THIS OFFICE FOR RECORD ON THIS 27th DAY OF October, 1967 A. D., AT 11 O'CLOCK A. M.

James J. Eason
REGISTRAR OF TITLES
OLMSTED COUNTY, MINNESOTA
Lorraine Delaney, Deputy