

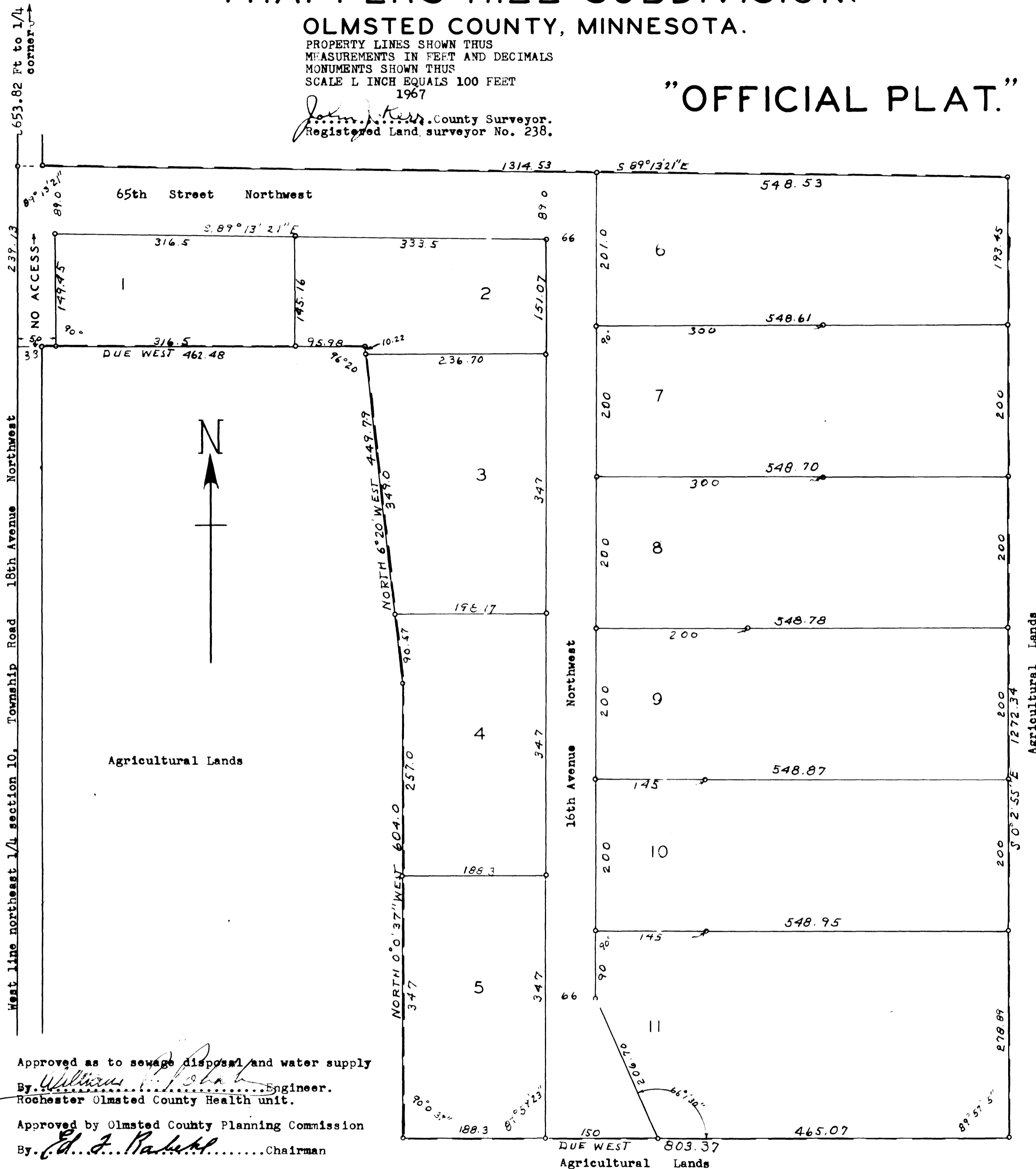
TRAPPERS HILL SUBDIVISION.

OLMSTED COUNTY, MINNESOTA.

PROPERTY LINES SHOWN THUS
MEASUREMENTS IN FEET AND DECIMALS
MONUMENTS SHOWN THUS
SCALE 1 INCH EQUALS 100 FEET
1967

John J. Kerr, County Surveyor.
Registered Land Surveyor No. 238.

"OFFICIAL PLAT."



Approved as to sewage disposal and water supply
By *William P. Pohl* Engineer.
Rochester Olmsted County Health Unit.

Approved by Olmsted County Planning Commission
By *E. J. Rasmussen* Chairman

Approved by Olmsted County Advisory Planning Commission
By *Robert Schoenfelder* Chairman

Approved by The County Engineer
By *W. L. Schellhammer* Engineer.

Approved by the board of supervisors Cascade Township
By *Harry Struble* Chairman
By *James E. Dodge* Supervisor
By *George W. Rasmussen* Supervisor

DEDICATION

Know all men by these presents that Elma B. Trapp, Lyle E. Qualey and Betty Lou Qualey (his wife) Owners and proprietors of lands situate in the south 3/4 of the west 1/4 of the northeast 1/4 of section 10, Township 107, North of range 14 west in Olmsted County, Minnesota described as follows; Commencing at the northwest corner of the northeast 1/4 of said section and running thence due south along the west line thereof a distance of 653.82 feet for a place of beginning, Running thence south 89° 13' 21" east a distance of 1314.53 feet, Thence south 0° 2' 55" east a distance of 1272.34 feet, Thence due west a distance of 803.37 feet, Thence north 0° 0' 37" west a distance of 604.0 feet, Thence north 6° 20' west a distance of 449.79 feet, Thence due west a distance of 462.48 feet to the west line of said northeast 1/4, Thence due north along the west line thereof a distance of 239.13 feet to the place of beginning, That we have caused the same to be surveyed, Staked and Platted into lots, Streets and Avenues such subdivision to be known and designated as "TRAPPERS HILL SUBDIVISION" That we do hereby donate and dedicate to the public for the public use as such the Streets and Avenues as shown on this plat, In witness whereof we have here-un-to set our hands and seals. In the presence of.

Marshall McCoy Witness. *Elma B. Trapp*
Alan E. Nelson Witness. *Lyle E. Qualey*
Marion G. Rasmussen Witness. *Betty Lou Qualey*

ACKNOWLEDGEMENT

State of Minnesota,
County of Olmsted, S. S.
On this *5th* day of *September* 1967 before me a notary public personally appeared Elma B. Trapp, Lyle E. Qualey and Betty Lou Qualey (his wife) to me known to be the persons described in and who executed the foregoing instrument and acknowledged that they executed the same as their free act and deed.

Marion G. Rasmussen Notary Public, Olmsted County, Minnesota.
My commission expires *May 1st* 19*68*.

SURVEYORS CERTIFICATE.

State of Minnesota,
County of Olmsted, S. S.
I, John J. Kerr County Surveyor in and for said County do hereby certify that I have surveyed, Staked and Platted the property described above as "TRAPPERS HILL SUBDIVISION" That all distances are correctly shown in feet and decimals of a foot, That monuments for the guidance of future surveys have been placed in the ground as shown on said plat, That the outside boundaries are correctly designated, That there are no wet lands thereon, That all public roads, Streets and Avenues are correctly designated.
Dated this 5th day of September A. D. 1967.

John J. Kerr County Surveyor.
Registered Land Surveyor No. 238.

State of Minnesota,
County of Olmsted, S. S.
I, Ross Browning County Auditor in and for said County do hereby certify that the attached plat was duly approved by the Board of County Commissioners at a meeting held on this *19th* day of *September* 1967, in testimony whereof I have signed my name and affixed the seal of said County.

Ross Browning County Auditor.

Taxes paid for the year of 1967.

Karl A. Astor County Treasurer

Taxes paid and transfer entered this *2nd* day of *October* 1967.

Ross Browning County Auditor.
by Maria Wilson, Deputy

State of Minnesota,
County of Olmsted, S. S.
Filed for record this *2nd* day of *October* 1967, at *11:40* o'clock *A.M.*
and recorded in book of plats....Page

Harry J. Swan Register of Deeds.
Laid Frostum, Deputy