

# MEADOW PARK RESUBDIVISION "C"

**DEDICATION:**

The undersigned does hereby certify that it is the sole interested party in the tract or land described in the foregoing Surveyor's Certificate, which is written on the plat on which this instrument is written, that it has caused the same to be surveyed and platted into Lots, Blocks, Avenues, and Easements under the name of MEADOW PARK RE-SUBDIVISION "C", as shown by said plat, and that it does hereby dedicate to the public for public use forever the Avenues as shown thereon, and grant the Easements defined thereon.

In the presence of:

Jennie Jurula  
Marilyn G. Olson  
 Mayo Foundation  
G. S. Schuster, Chairman  
J. W. Harwick, Secretary

State of Minnesota } S.S.  
 County of Olmsted }

On this 31 day of August 1967 A.D. before me a Notary Public in and for said County, personally appeared G. S. Schuster and J. W. Harwick, to me personally known, being each by me duly sworn, did say that they are respectively Chairman and Secretary of the Mayo Foundation, and that the seal affixed to this instrument is the Corporate Seal of said Corporation, and that said instrument was signed and sealed in its behalf by authority of its members, and said G. S. Schuster and J. W. Harwick acknowledge said instrument to be the free act and deed of said Corporation.

My commission expires May 30 1971 A.D.

Jennie Jurula  
 Notary Public, Olmsted County, State of Minnesota

Taxes for the year 1967 on the lands described within are paid.

Karl H. Gustafson  
 County Treasurer, Olmsted County, Minnesota

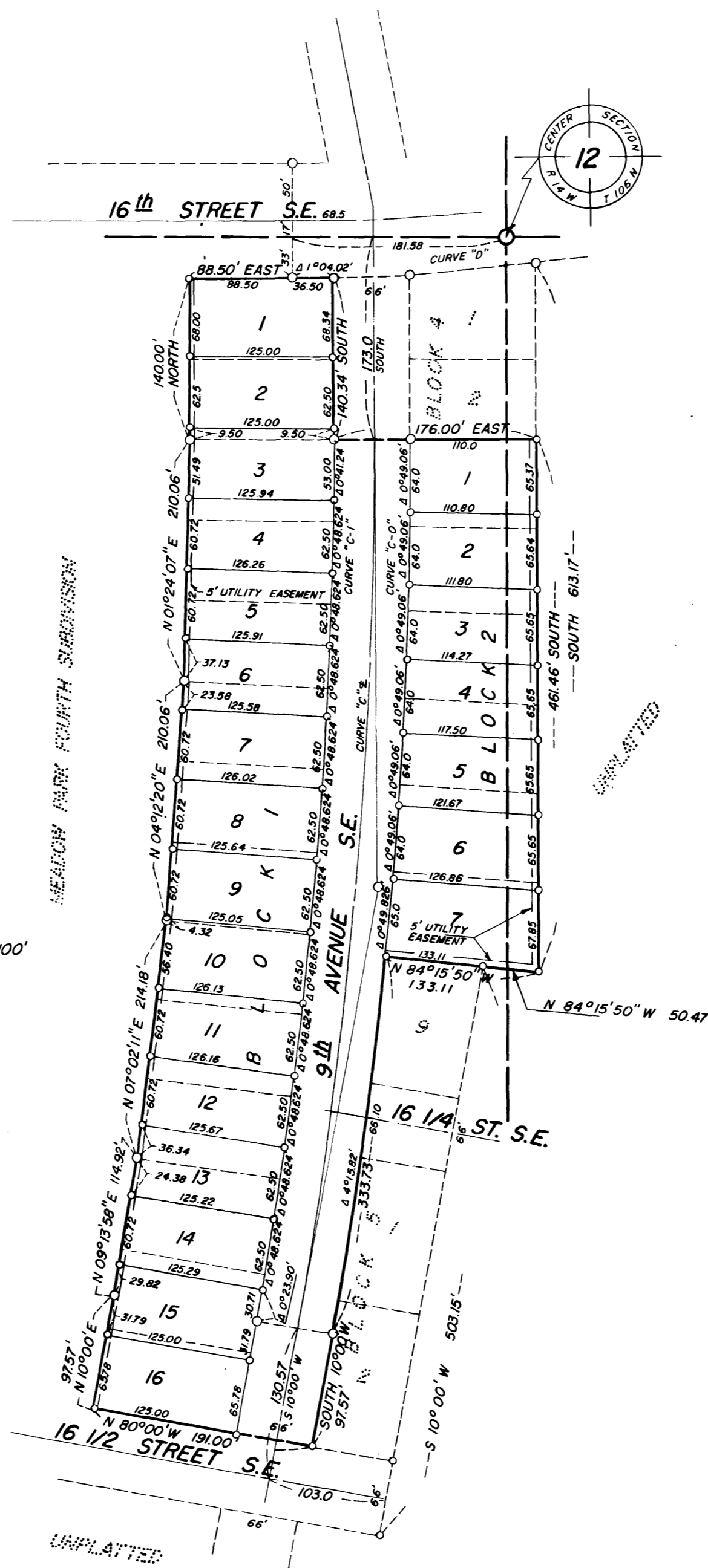
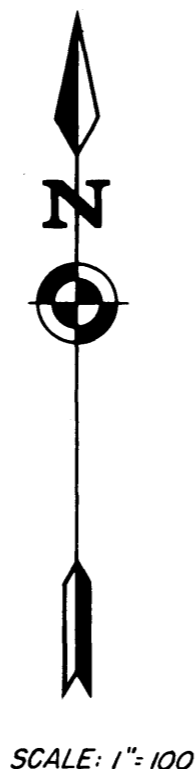
Taxes paid and transfer entered this 28 day of September 1967 A.D.

Melva Nelson  
 County Auditor

State of Minnesota } S.S. 15167  
 County of Olmsted }

Filed for record this 29<sup>th</sup> day of September 1967 A.D. at 2 o'clock P. M. in Book \_\_\_\_\_ of Plats on Page \_\_\_\_\_

Henry J. Ewald  
 Registrar of Deeds, Registrar of Titles  
James P. Anderson, Deputy



**SURVEYORS CERTIFICATE:**

I, K. M. McGhie, Registered Civil Engineer and Land Surveyor, do hereby certify that at the request of the Mayo Foundation I have surveyed and platted into Lots, Blocks, Avenues, and Easements, as shown on the accompanying plat on which this certificate is written, and shall be known and designated as MEADOW PARK RE-SUBDIVISION "C", the following described tract of land:

All of Lots 15 through 28 inclusive in Block 3, and Lots 3 through 8 inclusive in Block 4 of Meadow Park Fourth Subdivision, as platted in the City of Rochester.

And I further certify that the said plat is a true and correct record of the survey, and that all distances are correctly shown in feet and decimals of feet, that monuments (iron pins) for the guidance of future surveys have been placed on the ground as shown thus (o), that there are no wet lands thereon, and that said plat has been previously platted as a part of Meadow Park Fourth Subdivision.

Dated this 25 day of August 1967 A.D. K. M. McGhie  
 K. M. McGhie, Registered Civil Engineer and Land Surveyor, Registration No. 1613

Subscribed and sworn before me a Notary Public this 25 day of August 1967 A.D. My Commission expires April 21 1970 A.D.

Melva Nelson  
 Notary Public, Olmsted County, Minnesota

State of Minnesota }  
 County of Olmsted }  
 City of Rochester }

I, Elfreda Reiter, City Clerk, in and for said City of Rochester, do hereby certify that on the 18<sup>th</sup> day of September 1967 A.D., the accompanying plat was duly approved by the Common Council of the City of Rochester. In testimony thereof I have hereunto signed my name and affixed the seal of said City of Rochester this 22<sup>nd</sup> day of September 1967 A.D.

Elfreda Reiter  
 City Clerk

**CURVE DATA (ARC DEFINITION)**

CURVE	Δ	D	R	T	L
C-1	10°	1°17.800	4418.72	386.59	771.21
C-E	10°	1°17.273	4451.72	389.47	776.97
C-O	10°	1°16.655	4484.72	396.36	782.73
D	6°13'30"	2°55'24"	1959.86		212.94

**UTILITY EASEMENT DEFINED:**

An unobstructed easement for the construction and maintenance of all necessary overhead, underground or surface, public or private utilities, including rights to conduct drainage and trimming on said easement.

OFFICIAL PLAT