

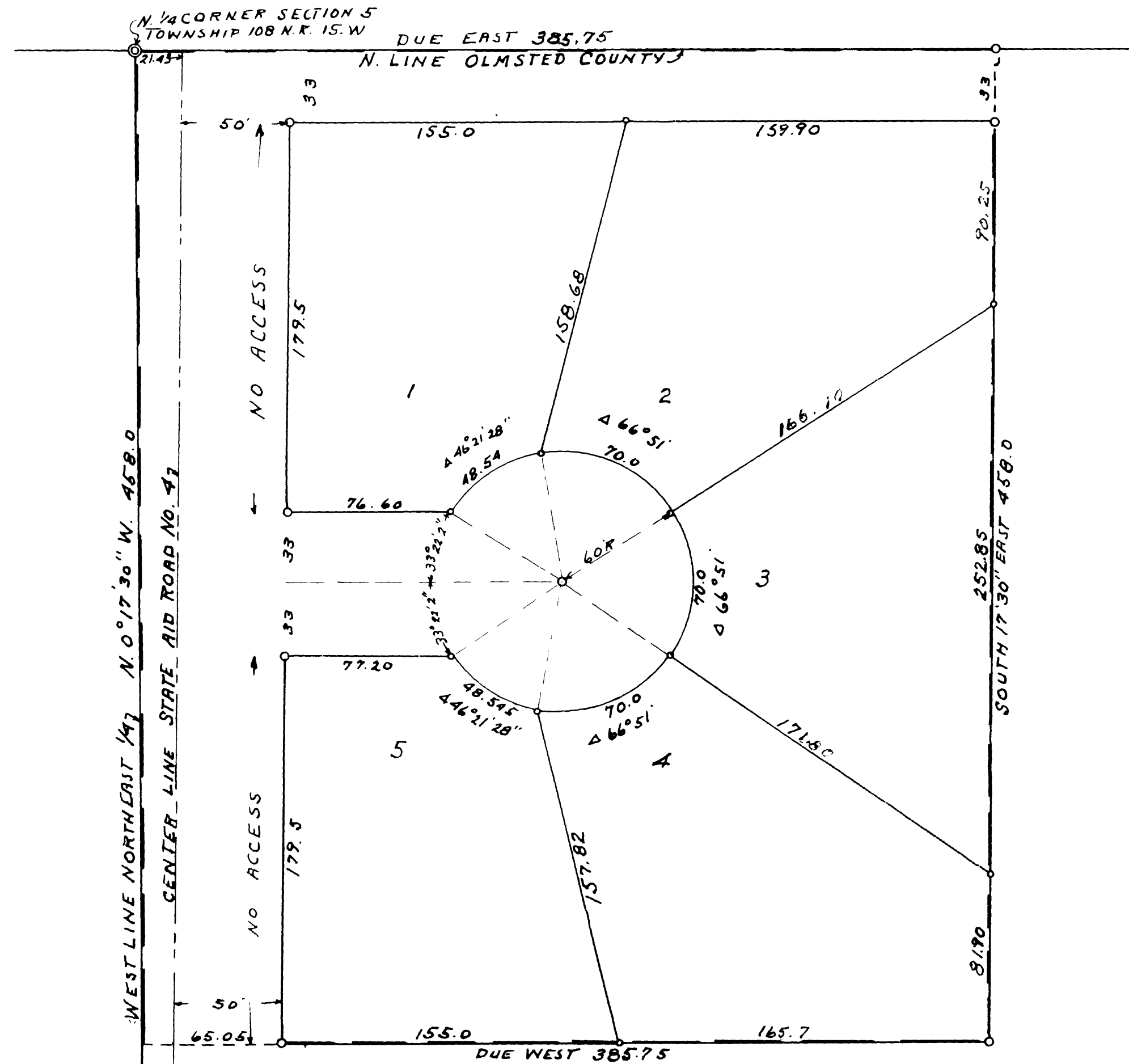


# DON-MAR SUBDIVISION. OLMSTED COUNTY, MINNESOTA.

Monuments shown thus   
Boundaries shown thus   
Measurements in feet and decimals  
Scale 1 inch equals 50 feet.

*John J. Kerr*...County Surveyor.  
Registered Land Surveyor No. 238.

ORIGINAL.



Approved as to water supply and sewage disposal

By *William P. Pohl*.....Engineer.

Approved by Olmsted County Zoning Commission.

By *Ed. J. Bahr*.....Chairman.

Approved by the planning advisory commission of Olmsted County.

By *Robert H. Badger*.....Chairman.

Approved by the County Engineer.

By *A. J. Hullbman*.....County Engineer.

Approved by the board of Supervisors New Haven Township.

By *Donald O. Baker*.....Chairman.

By *Lloyd E. Day*.....Supervisor.

By *Conrad Standfeld*.....Supervisor.

### DEDICATION

Know all men by these presents That Donald Theodore Pearson and Marie E. Pearson (his wife) Owners and proprietors of lands situate in the northeast quarter (1/4) of section 5, Township 108, north of range 15 west in Olmsted County, Minnesota described as follows; Commencing at the northwest corner of said northeast 1/4 and running thence due east along the north line thereof a distance of 385.75 feet, Thence south 17° 30' East a distance of 458 feet, Thence due west a distance of 385.75 feet to a point in the west line of said northeast 1/4, Thence north 0° 17' 30" west a distance of 458 feet to the place of beginning, That they have caused the same to be surveyed, Staked and platted into lots, Roads and Streets such subdivision to be known and designated as "DON-MAR SUBDIVISION" and they do hereby donate and dedicate the roads and streets as shown on the annexed plat to the public for the public use as such forever, In witness whereof we have here-un-to set our hands and seals. In the presence of.

*Robert Harper*.....Witness.

*Donald Theodore Pearson*  
DONALD THEODORE PEARSON

*Marian*.....Witness.

*Marie E. Pearson*  
MARIE E. PEARSON

### ACKNOWLEDGEMENT.

State of Minnesota,  
County of *Goodhue*, S. S.  
On this *12* day of *August*, A.D. 1966 before me a notary public personally appeared Donald Theodore Pearson and Marie E. Pearson (his wife) To me known to be the persons described in and who executed the foregoing instrument and they acknowledged that they executed the same as their free act and deed.

*Marian*.....Notary Public, *Goodhue* County, Minnesota.  
My commission expires *13 August*, 19*72*.

### SURVEYORS CERTIFICATE.

State of Minnesota,  
County of Olmsted, S. S.  
I, John J. Kerr County Surveyor in and for said county do hereby certify that I have surveyed Staked and platted the property described on this plat as "DON-MAR SUBDIVISION" That the plat is a correct representation of said survey as made, That all distances are correctly shown on said plat in feet and decimals of a foot, That monuments for the guidance of future surveys have been placed in the ground as shown on said plat, That the outside boundaries are correctly shown and designated, That there are no wet lands thereon, That all roads or public highways are correctly designated on said plat.  
Dated this day of August 31st 1966.

*John J. Kerr*...County Surveyor.  
Registered Land Surveyor No. 238.

State of Minnesota,  
County of Olmsted, S. S.  
I, Ross Browning County Auditor in and for said county do hereby certify that the attached plat was duly approved by the Board of County Commissioners at a meeting held on this *4* day of *April*, A.D. 1967, In testimony whereof I have signed my name and affixed the seal of said County.

*Ross Browning*.....County Auditor.

Taxes for the year of 1967. Paid.

*Paul H. Gorter*.....County Treasurer.  
*Gilbert Meyer, Deputy*

Taxes paid and transfer entered this *5th* day of *July*, A.D. 1967.

*Ross Browning*.....County Auditor.  
*Ruth Enam, Deputy*

State of Minnesota,  
County of Olmsted, S. S.  
Filed for record this *5* day of *August*, A.D. 1967 at *10*-Clock *P.*M.  
and recorded in Book of Plats *.....*Page.....

*John J. Kerr*.....Register of Deeds.  
*Gail Erickson, Deputy*