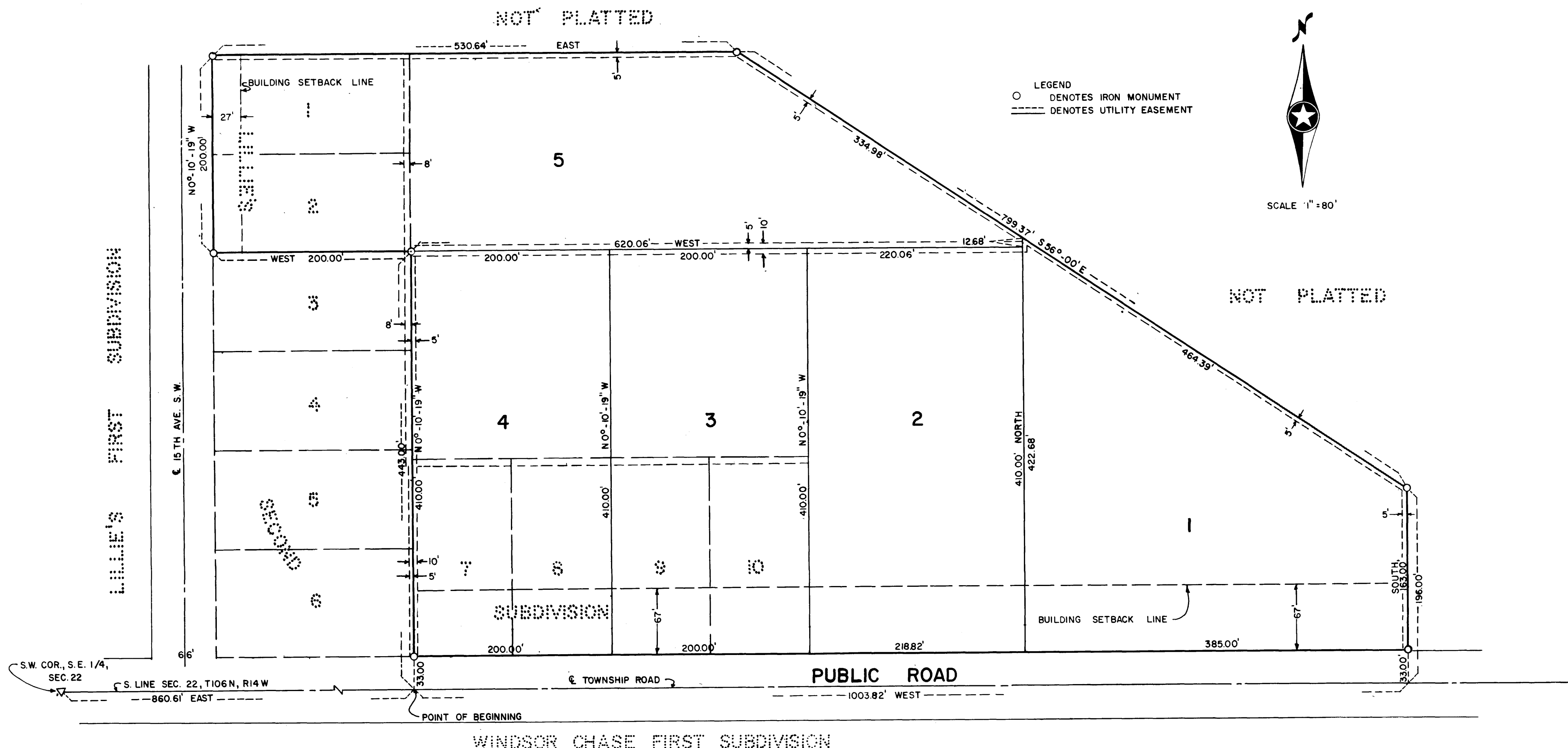


RICHLAND ESTATES FIRST SUBDIVISION

AND REPLAT OF LOTS 1, 2, 7, 8, 9, AND 10 OF LILLIE'S SECOND SUBDIVISION

ORIGINAL 12



STATE OF MINNESOTA)
COUNTY OF OLMSTED) SS

I, ROSS BROWNING, COUNTY AUDITOR IN AND FOR SAID COUNTY DO HEREBY CERTIFY THAT THE ANNEXED PLAT WAS DULY APPROVED BY THE BOARD OF COUNTY COMMISSIONERS AT A MEETING HELD ON THE 27th DAY OF December, 1966 AD. IN TESTIMONY WHEREOF, I HAVE SIGNED MY NAME AND AFFIXED THE SEAL OF SAID COUNTY THIS 27th DAY OF December, 1966 AD.

Ross Browning
COUNTY AUDITOR

WE, THE MEMBERS OF THE TOWNSHIP BOARD OF SUPERVISORS FOR ROCHESTER TOWNSHIP, OLMSTED COUNTY, MINNESOTA, DO HEREBY CERTIFY THAT WE HAVE APPROVED THE ACCOMPANYING PLAT. IN TESTIMONY WHEREOF WE HAVE SIGNED OUR NAMES THIS 8 DAY OF Dec, 1966 AD.

Christy Oster CHAIRMAN
L.R. Shuck SUPERVISOR
Ed F. Hurdell SUPERVISOR

WE, THE MEMBERS OF THE EXECUTIVE COMMITTEE OF THE OLMSTED COUNTY PLANNING COMMISSION DO HEREBY CERTIFY THAT WE HAVE EXAMINED THE PLAT AS SHOWN AND FIND THAT IT CONFORMS TO THE PROVISIONS OF THE ZONING ORDINANCE OF COUNTY OF OLMSTED.

SIGNED *Robert H. Badger*
CHAIRMAN OF COMMISSION

STATE OF MINNESOTA)
COUNTY OF OLMSTED) SS

I HEREBY CERTIFY THAT THIS PLAT WAS FILED IN THIS OFFICE FOR RECORD ON THIS 5 DAY OF January, 1967 AD, AT 11:20 O'CLOCK A.M.

Harry H. Evans
REGISTER OF DEEDS
Rain Smolton, deputy
OLMSTED COUNTY, MINNESOTA

UTILITY EASEMENT DEFINED:
EASEMENT FOR CONSTRUCTION AND MAINTENANCE OF ALL NECESSARY OVERHEAD, UNDERGROUND OR SURFACE, PUBLIC AND PRIVATE UTILITIES, INCLUDING RIGHTS TO CONDUCT DRAINAGE AND TRIMMING ON SAID EASEMENT.

TAXES PAID AND TRANSFER ENTERED THE 4th DAY OF January, 1967 AD.

Ross Browning
COUNTY AUDITOR

TAXES FOR THE YEAR 1966 ON LANDS DESCRIBED WITHIN ARE PAID.

Ed H. Posten
COUNTY TREASURER

APPROVED AS TO WATER SUPPLY AND SEWAGE DISPOSAL THIS 4th DAY OF Nov, 1966 AD BY *Victor C. Wilson, M.D.* HEALTH OFFICER ROCHESTER OLMSTED COUNTY, HEALTH UNIT

SURVEYOR'S CERTIFICATE

I, LEONARD M. SANKSTONE, REGISTERED LAND SURVEYOR DO HEREBY CERTIFY THAT AT THE REQUEST OF RICH PROPERTIES INC., OWNER, A MINNESOTA CORPORATION, AND ROCHESTER STATE BANK, A MINNESOTA CORPORATION, MORTGAGEE, I HAVE SURVEYED AND PLATTED INTO LOTS, PUBLIC ROAD, AND EASEMENTS AS SHOWN ON THE ACCOMPANYING PLAT ON WHICH THIS CERTIFICATE IS WRITTEN THE FOLLOWING DESCRIBED TRACT:

THAT PART OF THE SOUTHEAST 1/4 OF SECTION 22, TOWNSHIP 106 NORTH, RANGE 14 WEST, OLMSTED COUNTY, MINNESOTA, DESCRIBED AS FOLLOWS:

COMMENCING AT THE SOUTHWEST CORNER OF THE SOUTHEAST 1/4 OF SAID SECTION; THENCE ON AN ASSUMED BEARING OF DUE EAST ALONG THE SOUTH LINE OF SAID SECTION, (SAID SOUTH LINE OF SAID SECTION ALSO BEING THE CENTERLINE OF A TOWNSHIP ROAD) A DISTANCE OF 860.61 FEET TO THE POINT OF BEGINNING OF THE TRACT OF LAND TO BE DESCRIBED; THENCE N0°10'19"W AND PARALLEL WITH THE WEST LINE OF SAID SOUTHEAST 1/4 A DISTANCE OF 443.00 FEET; THENCE WEST AND PARALLEL WITH THE SOUTH LINE OF SAID SECTION A DISTANCE OF 200.00 FEET; THENCE N0°10'19"W A DISTANCE OF 200.00 FEET; THENCE EAST A DISTANCE OF 530.64 FEET; THENCE S56°00'E A DISTANCE OF 799.37 FEET; THENCE SOUTH A DISTANCE OF 196.00 FEET TO A POINT ON THE SOUTH LINE OF SAID SECTION 22; THENCE WEST ALONG THE SOUTH LINE OF SAID SECTION A DISTANCE OF 1003.82 FEET TO THE POINT OF BEGINNING.

AND I FURTHER CERTIFY THAT SAID PLAT IS A TRUE AND CORRECT REPRESENTATION OF THE SURVEY AND THAT ALL DISTANCES ARE SHOWN IN FEET AND DECIMALS OF FEET; THAT MONUMENTS (IRON PINS) FOR THE GUIDANCE OF FUTURE SURVEYS HAVE BEEN PLACED IN THE GROUND AS SHOWN THUS (O); THAT THE OUTSIDE BOUNDARIES ARE CORRECTLY SHOWN ON THE PLAT, THAT THERE ARE NO WET LANDS THEREON AND THAT PARTS OF SAID LANDS HAVE BEEN PREVIOUSLY PLATTED AS LILLIES SECOND SUBDIVISION AS SHOWN ON THE ANNEXED PLAT.

DATED THIS 21st DAY OF OCTOBER, 1966 AD
Leonard M. Sankstone
LEONARD M. SANKSTONE REG. NO. 5325

SUBSCRIBED AND SWORN BEFORE ME A NOTARY PUBLIC THIS 21st DAY OF OCTOBER, 1966 AD

W. E. Agnew
NOTARY PUBLIC, OLMSTED COUNTY, MINNESOTA

DEDICATION

WE, RICH PROPERTIES, INC., OWNER, A MINNESOTA CORPORATION, AND ROCHESTER STATE BANK OF ROCHESTER, A MINNEOSTA CORPORATION, MORTGAGEE, CERTIFY THAT WE ARE THE SOLE INTERESTED PARTIES IN THE TRACT OF LAND DESCRIBED IN THE FOREGOING SURVEYOR'S CERTIFICATE WHICH IS WRITTEN ON THE PLAT ON WHICH THIS INSTRUMENT IS WRITTEN; THAT WE HAVE CAUSED THE SAME TO BE PLATTED INTO LOTS, PUBLIC ROAD, AND EASEMENTS UNDER THE NAME OF RICHLAND ESTATES FIRST SUBDIVISION AND REPLAT OF LOTS 1, 2, 7, 8, 9 AND 10 OF LILLIE'S SECOND SUBDIVISION AS SHOWN BY THIS SAID PLAT AND THAT WE DO HEREBY DEDICATE TO THE PUBLIC FOR PUBLIC USE FOREVER THE PUBLIC ROAD SHOWN THEREON AND GRANT THE EASEMENTS SHOWN THEREON.

IN THE PRESENCE OF:
William F. Young BY *Michael J. Rich* ITS PRESIDENT
Wayne E. Stillman *Raymond C. Rich* ITS SECRETARY-TREASURER

ROCHESTER STATE BANK OF ROCHESTER, MINNESOTA
BY *John W. Huemoller* ITS EXECUTIVE VICE PRESIDENT

La Donna Severson *John W. Huemoller* ITS VICE PRESIDENT AND CASHIER

ACKNOWLEDGEMENT

STATE OF MINNESOTA)
COUNTY OF OLMSTED) S.S.

ON THIS 31st DAY OF Oct, 1966 A.D., BEFORE ME A NOTARY PUBLIC IN AND FOR SAID COUNTY, PERSONALLY APPEARED GERALD BOLDON AND JOHN HUEMOELLER, TO ME PERSONALLY KNOWN, WHO, BEING EACH BY ME DULY SWORN DID SAY THAT THEY ARE RESPECTIVELY THE EXECUTIVE VICE PRESIDENT AND VICE PRESIDENT AND CASHIER OF ROCHESTER STATE BANK OF ROCHESTER, A MINNESOTA CORPORATION, AND THAT THE SEAL AFFIXED TO SAID INSTRUMENT IS THE CORPORATE SEAL OF SAID CORPORATION, AND THAT SAID INSTRUMENT WAS SIGNED AND SEALED IN BEHALF OF SAID CORPORATION BY AUTHORITY OF ITS BOARD OF DIRECTORS, AND SAID GERALD BOLDON AND JOHN HUEMOELLER ACKNOWLEDGE SAID INSTRUMENT TO BE THE FREE ACT AND DEED OF SAID CORPORATION.

Wesley A. Young
NOTARY PUBLIC
OLMSTED COUNTY, MINNESOTA

MY COMMISSION EXPIRES Jan 4, 1973

ACKNOWLEDGEMENT

STATE OF MINNESOTA)
COUNTY OF OLMSTED) SS

ON THIS 7th DAY OF Nov, 1966 A.D., BEFORE ME A NOTARY PUBLIC IN AND FOR SAID COUNTY, PERSONALLY APPEARED MICHAEL J. RICH AND RAYMOND C. RICH TO ME PERSONALLY KNOWN, WHO, BEING EACH BY ME DULY SWORN DID SAY THAT THEY ARE RESPECTIVELY THE PRESIDENT AND SECRETARY-TREASURER OF RICH PROPERTIES INC., A MINNESOTA CORPORATION, AND THAT THE SEAL AFFIXED TO SAID INSTRUMENT IS THE CORPORATE SEAL OF SAID CORPORATION, AND THAT SAID INSTRUMENT WAS SIGNED AND SEALED IN BEHALF OF SAID CORPORATION BY AUTHORITY OF ITS BOARD OF DIRECTORS, AND SAID MICHAEL J. RICH AND RAYMOND C. RICH ACKNOWLEDGE SAID INSTRUMENT TO BE THE FREE ACT AND DEED OF SAID CORPORATION.

William F. Young
NOTARY PUBLIC
OLMSTED COUNTY, MINNESOTA

Nov 9th 1968
MY COMMISSION EXPIRES
WILLIAM F. YOUNG
Notary Public, Olmsted County, Minn.
My Commission Expires Nov-9, 1968