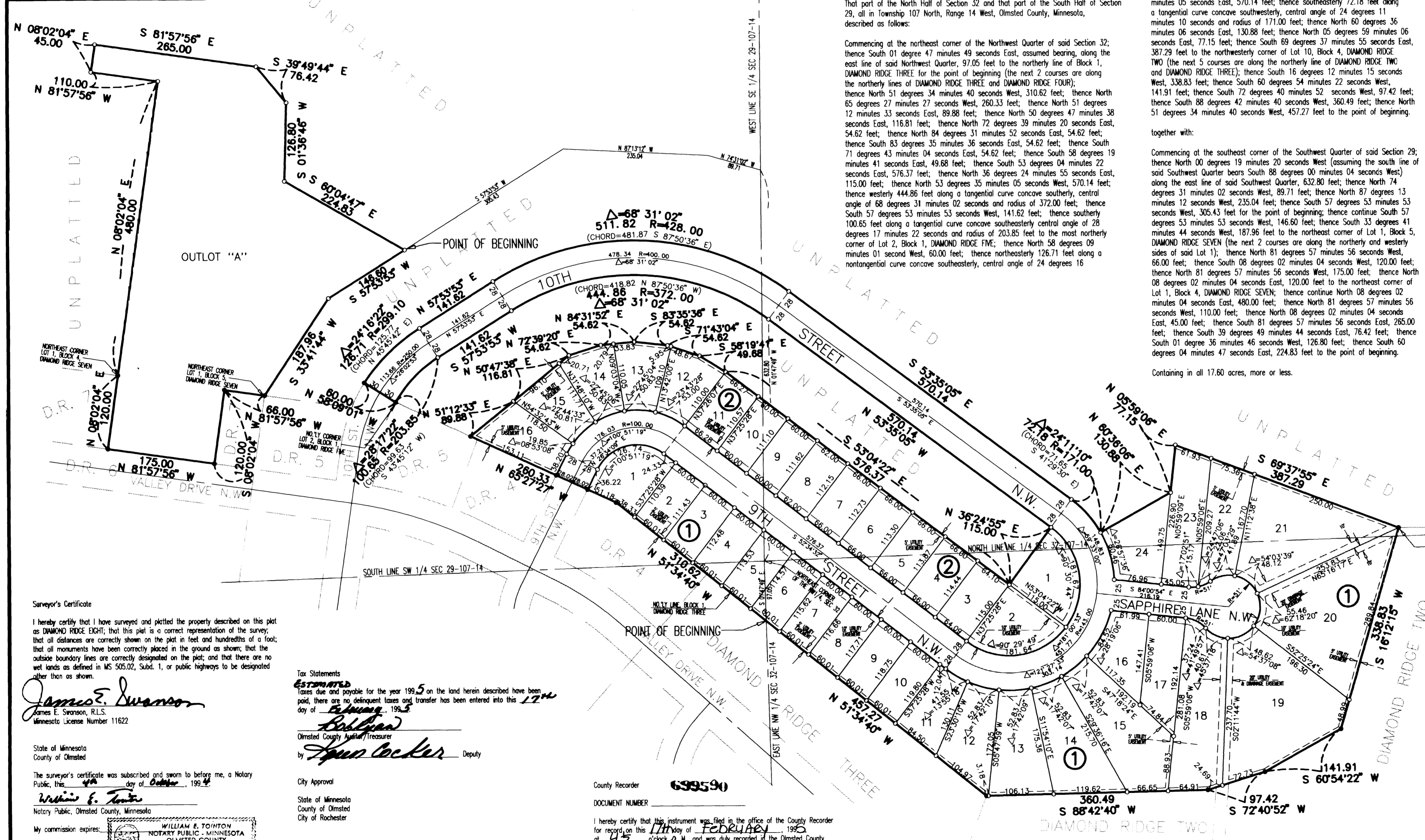
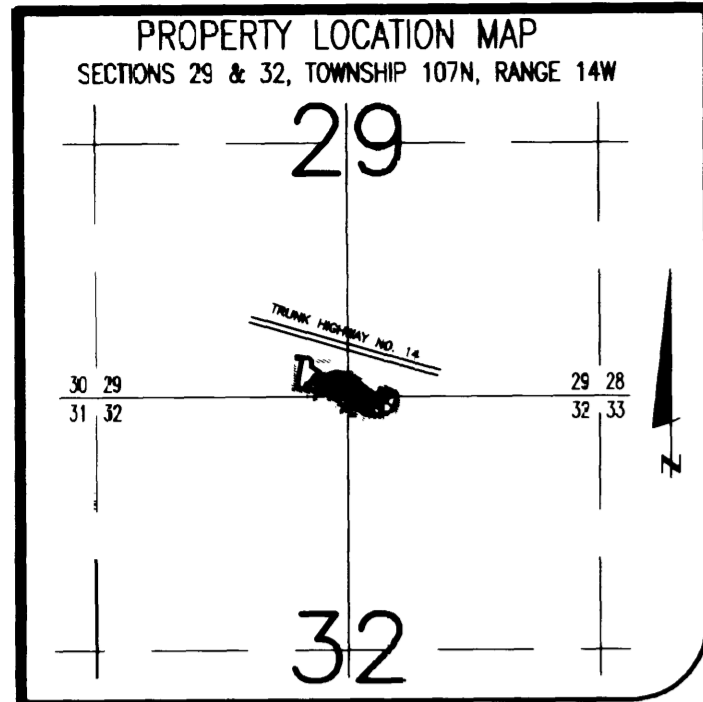


OFFICIAL PLAT

DIAMOND RIDGE EIGHT



Instrument of Dedication

KNOW ALL MEN BY THESE PRESENTS: That Western Walls, Inc., a Minnesota Corporation and the City of Rochester, Minnesota, a Municipal Corporation (owner of proposed Outlot "A"), owners and proprietors of the following described property situated in the County of Olmsted, State of Minnesota, to wit:

That part of the North Half of Section 32 and that part of the South Half of Section 29, all in Township 107 North, Range 14 West, Olmsted County, Minnesota, described as follows:

Commencing at the northeast corner of the Northwest Quarter of said Section 32; thence South 01 degree 47 minutes 49 seconds East, assumed bearing, along the east line of said Northwest Quarter, 97.05 feet to the northerly line of Block 1, DIAMOND RIDGE THREE for the point of beginning (the next 2 courses are along the northerly lines of DIAMOND RIDGE THREE and DIAMOND RIDGE FOUR); thence North 51 degrees 34 minutes 40 seconds West, 310.62 feet; thence North 65 degrees 27 minutes 27 seconds West, 260.33 feet; thence North 51 degrees 12 minutes 33 seconds East, 89.88 feet; thence North 50 degrees 47 minutes 38 seconds East, 116.81 feet; thence North 72 degrees 39 minutes 20 seconds East, 54.62 feet; thence North 84 degrees 31 minutes 52 seconds East, 54.62 feet; thence South 71 degrees 45 minutes 04 seconds East, 49.68 feet; thence South 53 degrees 04 minutes 22 seconds East, 576.37 feet; thence North 36 degrees 24 minutes 55 seconds East, 115.00 feet; thence North 53 degrees 35 minutes 05 seconds West, 570.14 feet; thence westerly 444.86 feet along a tangential curve concave southerly, central angle of 68 degrees 31 minutes 02 seconds and radius of 372.00 feet; thence South 57 degrees 53 minutes 53 seconds West, 141.62 feet; thence southerly 100.65 feet along a tangential curve concave southeasterly central angle of 28 degrees 17 minutes 22 seconds and radius of 203.85 feet to the most northerly corner of Lot 2, Block 1, DIAMOND RIDGE FIVE; thence North 58 degrees 09 minutes 01 second West, 60.00 feet; thence northeasterly 126.71 feet along a nontangential curve concave southeasterly, central angle of 24 degrees 16

minutes 22 seconds, radius of 299.10 feet and the chord of said curve bears North 45 degrees 45 minutes 42 seconds East, 125.77 feet; thence North 57 degrees 53 minutes 53 seconds East, 141.62 feet; thence easterly 511.82 feet along a tangential curve concave southerly, central angle of 68 degrees 31 minutes 02 seconds and radius of 428.00 feet; thence South 53 degrees 35 minutes 05 seconds East, 570.14 feet; thence southeasterly 72.18 feet along a tangential curve concave southwesterly, central angle of 24 degrees 11 minutes 10 seconds and radius of 171.00 feet; thence North 60 degrees 36 minutes 06 seconds East, 130.88 feet; thence North 05 degrees 59 minutes 06 seconds East, 77.15 feet; thence South 69 degrees 37 minutes 55 seconds East, 387.29 feet to the northerly corner of Lot 10, Block 4, DIAMOND RIDGE TWO (the next 5 courses are along the northerly line of DIAMOND RIDGE TWO and DIAMOND RIDGE THREE); thence South 16 degrees 12 minutes 15 seconds West, 338.83 feet; thence South 60 degrees 54 minutes 22 seconds West, 141.91 feet; thence South 72 degrees 40 minutes 52 seconds West, 97.42 feet; thence South 88 degrees 42 minutes 40 seconds West, 360.49 feet; thence North 51 degrees 34 minutes 40 seconds West, 457.27 feet to the point of beginning.

together with:

Commencing at the southeast corner of the Southwest Quarter of said Section 29; thence North 00 degrees 19 minutes 20 seconds West (assuming the south line of said Southwest Quarter bears South 88 degrees 00 minutes 04 seconds West) along the east line of said Southwest Quarter, 632.80 feet; thence North 74 degrees 31 minutes 02 seconds West, 89.71 feet; thence North 87 degrees 13 minutes 12 seconds West, 235.04 feet; thence South 57 degrees 53 minutes 53 seconds West, 235.04 feet for the point of beginning; thence continue South 57 degrees 53 minutes 53 seconds West, 146.60 feet; thence South 33 degrees 41 minutes 44 seconds West, 187.96 feet to the northeast corner of Lot 1, Block 5, DIAMOND RIDGE SEVEN (the next 2 courses are along the northerly and westerly sides of said Lot 1); thence North 81 degrees 57 minutes 56 seconds West, 66.00 feet; thence South 08 degrees 02 minutes 04 seconds West, 120.00 feet; thence North 81 degrees 57 minutes 56 seconds West, 175.00 feet; thence North 08 degrees 02 minutes 04 seconds East, 120.00 feet to the northeast corner of Lot 1, Block 4, DIAMOND RIDGE SEVEN; thence continue North 08 degrees 02 minutes 04 seconds East, 480.00 feet; thence North 81 degrees 57 minutes 56 seconds West, 110.00 feet; thence South 81 degrees 57 minutes 56 seconds East, 265.00 feet; thence South 39 degrees 49 minutes 44 seconds East, 76.42 feet; thence South 01 degree 36 minutes 46 seconds West, 126.80 feet; thence South 60 degrees 04 minutes 47 seconds East, 224.83 feet to the point of beginning.

Containing in all 17.60 acres, more or less.

have caused the same to be surveyed and platted as DIAMOND RIDGE EIGHT and do hereby dedicate to the public for the public use forever, the thoroughfares and cul-de-sacs, and also dedicate the easements as shown on this plat for drainage and utility purposes only.

In witness whereof said Western Walls, Inc., a Minnesota Corporation, has caused these presents to be signed by its proper officer this 10th day of February, 1995.

Charles Owen DeWitz, Vice President

State of Minnesota, County of Olmsted

The foregoing instrument was acknowledged before me this 10th day of February, 1995, by Charles Owen DeWitz, Vice President, on behalf of the Corporation.

Lori Lovett, Notary Public, Olmsted County, Minnesota

My commission expires 1-31-2000

In witness whereof said City of Rochester, Minnesota, a Municipal Corporation, has caused these presents to be signed by its proper officer this 13th day of February, 1995.

Chuck Chapman, Mayor

State of Minnesota, County of Olmsted

The foregoing instrument was acknowledged before me this 13th day of February, 1995, by Chuck Chapman, Mayor, and Mark A. Grimm, City Clerk on behalf of the City of Rochester, Minnesota.

Atheris M. Morris, Notary Public, Olmsted County, Minnesota

Surveyor's Certificate

I hereby certify that I have surveyed and platted the property described on this plat as DIAMOND RIDGE EIGHT; that this plat is a correct representation of the survey; that all distances are correctly shown on the plat in feet and hundredths of a foot; that all monuments have been correctly placed in the ground as shown; that the outside boundary lines are correctly designated on the plat; and that there are no wet lands as defined in MS 505.02, Subd. 1, or public highways to be designated other than as shown.

James E. Swanson, Notary Public, Olmsted County, Minnesota

The surveyor's certificate was subscribed and sworn to before me, a Notary Public, this 4th day of October, 1994.

William E. Tontz, Notary Public, Olmsted County, Minnesota

My commission expires 8/4/98

County Surveyor

I certify that this plat has been checked mathematically and that the plat conforms to the applicable laws, this 4th day of October, 1994.

Edward P. Kuwile, Olmsted County Surveyor

Tax Statements

Estimated taxes due and payable for the year 1995 on the land herein described have been paid, there are no delinquent taxes and transfer has been entered into this day of February, 1995.

John Locker, Deputy

City Approval

State of Minnesota, County of Olmsted, City of Rochester

I, Carole A. Grimm, City Clerk, in and for the City of Rochester, do hereby certify that on the 13th day of February, 1995, the accompanying plat was duly approved by the Common Council of the City of Rochester. In testimony thereof I have hereunto signed my name and affixed the seal of said City of Rochester this 13th day of February, 1995.

Carole A. Grimm, City Clerk

County Recorder 639594

DOCUMENT NUMBER

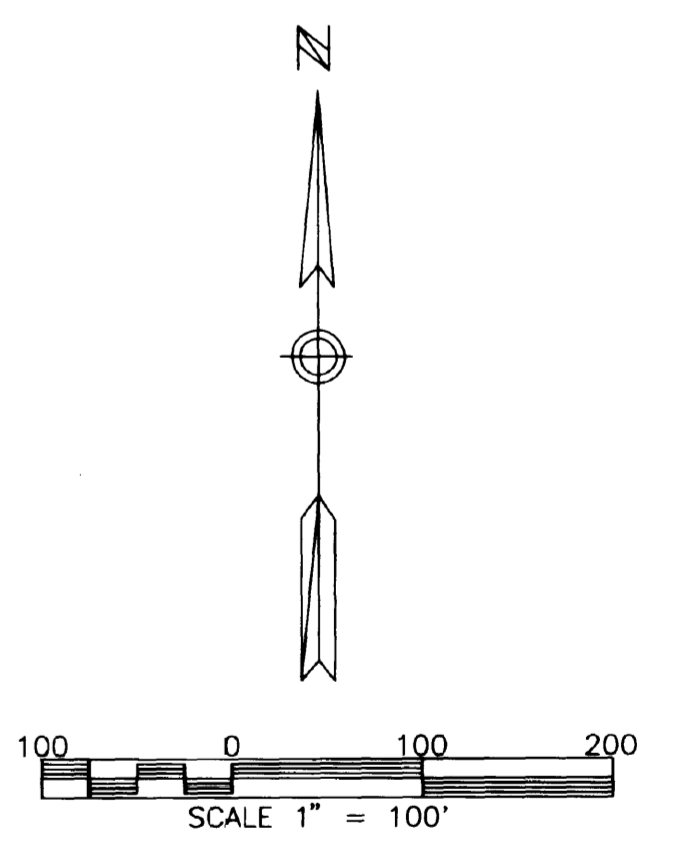
I hereby certify that this instrument was filed in the office of the County Recorder for record on this 17th day of February, 1995 at 4:50 o'clock P.M., and was duly recorded in the Olmsted County records.

Lori Buske, County Recorder

Deputy

DRAINAGE EASEMENT defined: An unobstructed easement for the operation and maintenance of waterways, both surface and underground, running over, across, and under said easement.

UTILITY EASEMENT defined: An unobstructed easement for the construction and maintenance of all necessary underground or surface public utilities including rights to conduct drainage and trimming on said easement.



NOTE: ALL MONUMENTS SHOWN THIS: ○ ARE 5/8" I.D. CAPPED PIPES SET WITH REGISTRATION NO. 11622.

ALL MONUMENTS SHOWN THIS: ● ARE FOUND 5/8" PIPES.

BASIS OF BEARING SYSTEMS: ALL BEARINGS ARE IN RELATIONSHIP WITH THE EAST LINE N.W. 1/4, SEC. 32, WHICH IS ASSUMED TO BE S01°47'49"E.

PREPARED BY: McGHEE & BETTS, INC. CONSULTING ENGINEERS PLANNERS, LAND SURVEYORS ROCHESTER, MINNESOTA

DIAMOND RIDGE EIGHT