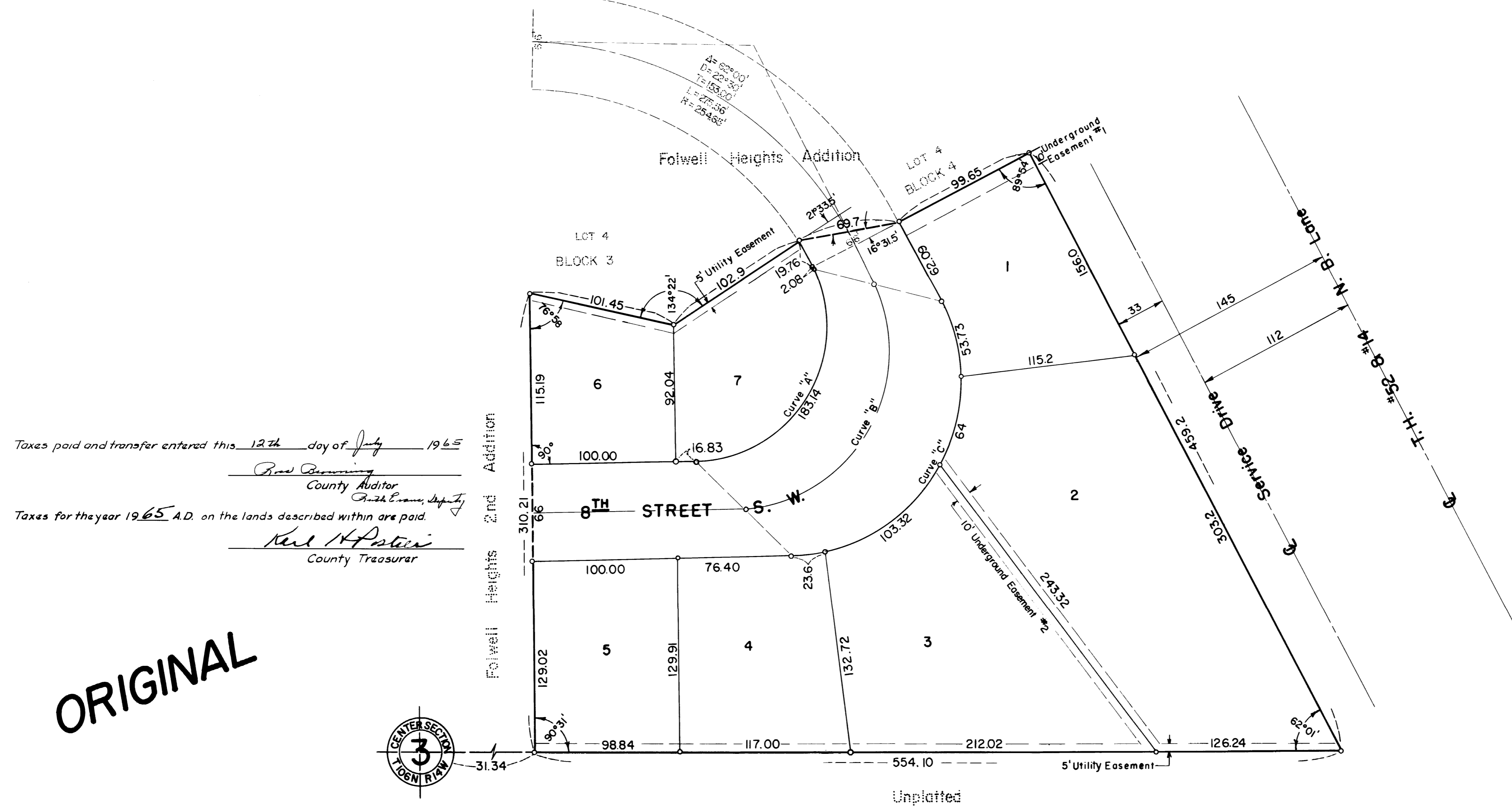
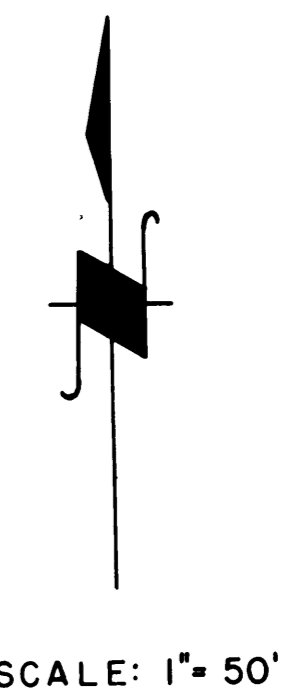


# FOLWELL HEIGHTS THIRD ADDITION



Taxes paid and transfer entered this 12th day of July 1965  
Road Assessing  
 County Auditor  
 Taxes for the year 1965 A.D. on the lands described within are paid.  
Karl H. Astor  
 County Treasurer



CURVE DATA						
Curve	A	D	T	R	F	
"A"	118° 00'	64° 26'	147.99	88.92	183.14	83.73
"B"	118° 00'	55° 10'	172.85	103.86	213.90	97.79
"C"	118° 00'	48° 14'	197.70	118.79	244.65	111.85

**UTILITY EASEMENT DEFINED**  
 Easement for the construction and maintenance of all necessary overhead, underground, or surface, Public and Private Utilities, including rights to conduct drainage on said easement.

**UNDERGROUND EASEMENT #1 DEFINED**  
 Easement for the operation and maintenance of a storm sewer and rights to conduct drainage over said easement.

**UNDERGROUND EASEMENT #2 DEFINED**  
 Easement for the operation and maintenance of a gas main.

**ORIGINAL**

## DEDICATION

## SURVEYOR'S CERTIFICATE

We the undersigned certify that we are the sole interested parties in the tract of land described in the foregoing Surveyor's Certificate which is written on the plat on which this instrument is written, that we have caused the same to be surveyed and plotted into lots, and, streets, and easements under the name of **FOLWELL HEIGHTS THIRD ADDITION** as shown by said plat and that we do hereby dedicate to the public for public use forever the streets as shown, and grant easements as shown thereon.

I, K.M. McGhie, Registered Civil Engineer and Land Surveyor do hereby certify that at the request of **THE KRUSE COMPANY** I have surveyed and plotted into lots, blocks, and streets as shown on the accompanying plat on which this instrument is written: and which shall be known as **FOLWELL HEIGHTS THIRD ADDITION**, the following described tract of land:

In the presence of:  
R. H. Stull  
Joe Bous  
H. E. Payne  
H. W. Hodge  
 Signed: The Kruse Company  
 H. E. Payne (President) H. W. Hodge (Secretary-Treasurer)

A part of the SW 1/4, NE 1/4, Sec 3, Township 106 North, Range 14 West, described by metes and bounds as follows:  
 Commencing at the Center of said Section 3, thence East along the South Line of said Northeast quarter section a distance of 31.34 feet for a place of beginning; Thence East along the South line of said Northeast quarter section a distance of 554.10 feet to the West Right-of-way line of Trunk Highway #52, thence Northwesterly along said Right-of-way at a deflection angle of 117 degrees 59 minutes to the left for a distance of 459.2 feet to a point on the South line of Lot 4, Block 4, Folwell Heights Addition, thence Southwesterly along the South line of said Lot at a deflection angle of 90 degrees 06 minutes to the left for a distance of 99.65 feet, thence Southwesterly at a deflection angle of 16 degrees 31 1/2 minutes to the right for a distance of 69.70 feet, thence Southwesterly at a deflection angle of 21 degrees 33 1/2 minutes to the left for a distance of 102.9 feet, thence Northwesterly at a deflection angle of 45 degrees 38 minutes to the Right for a distance of 101.45 feet to a point on the South line of Lot 4, Block 3, Folwell Heights Addition, thence South along the East line of Folwell Heights Second Addition for a distance of 310.21 feet to the place of beginning.

State of Minnesota } s.s.  
 County of Olmsted }  
 City of Rochester }  
 On this 29th day of November 1963 A.D. before me a notary public in and for said County, personally appeared H.E. Payne and H.W. Hodge, to me personally known who, being each by me duly sworn, did say that they are respectively, President and Secretary-Treasurer of The Kruse Co. and that the seal affixed to this instrument is the Corporate Seal of said Corporation and that said instrument was signed and sealed in its behalf by authority of its members as H.E. Payne and H.W. Hodge acknowledge said instrument to be the free act and deed of said Corporation.  
 My commission expires Nov 20 1970.

And I further certify that the accompanying plat is a correct representation of the survey, that all distances are correctly shown in feet and decimals of feet, that monuments for the guidance of future surveys have been placed on the ground as shown thus (o), that the outside boundaries are correctly designated on the plat, that there are no wet lands to be designated thereon, and that said tract has not been previously platted.  
 Dated this 27th day of November 1963 A.D.  
K.M. McGhie  
 K.M. McGhie, Registered Civil Engineer and Land Surveyor No. 1613

Dana C. Doole  
 Notary Public, Olmsted County, State of Minnesota

State of Minnesota } s.s.  
 County of Olmsted }  
 City of Rochester }  
 I, Elfreda Reiter, City Clerk in and for the City of Rochester do hereby certify that on the 20th day of January 1964 A.D. the accompanying plat was duly approved by the common council of the City of Rochester, in testimony thereof I have here unto signed my name and affixed the seal of said City of Rochester this 22nd day of January 1964 A.D.  
Elfreda Reiter  
 City Clerk

Subscribed and sworn before me a Notary Public  
 This 21st day of November 1963 A.D.  
Dana C. Doole  
 Notary Public, Olmsted County, Minnesota  
 My commission expires February 23 1967

State of Minnesota } s.s.  
 County of Olmsted }  
 Filed for record this 12th day of July 1965 A.D. at 4:20 o'clock P.M.  
 In Book --- of plats on page ---  
Wm. V. Stiles  
 Register of Deeds