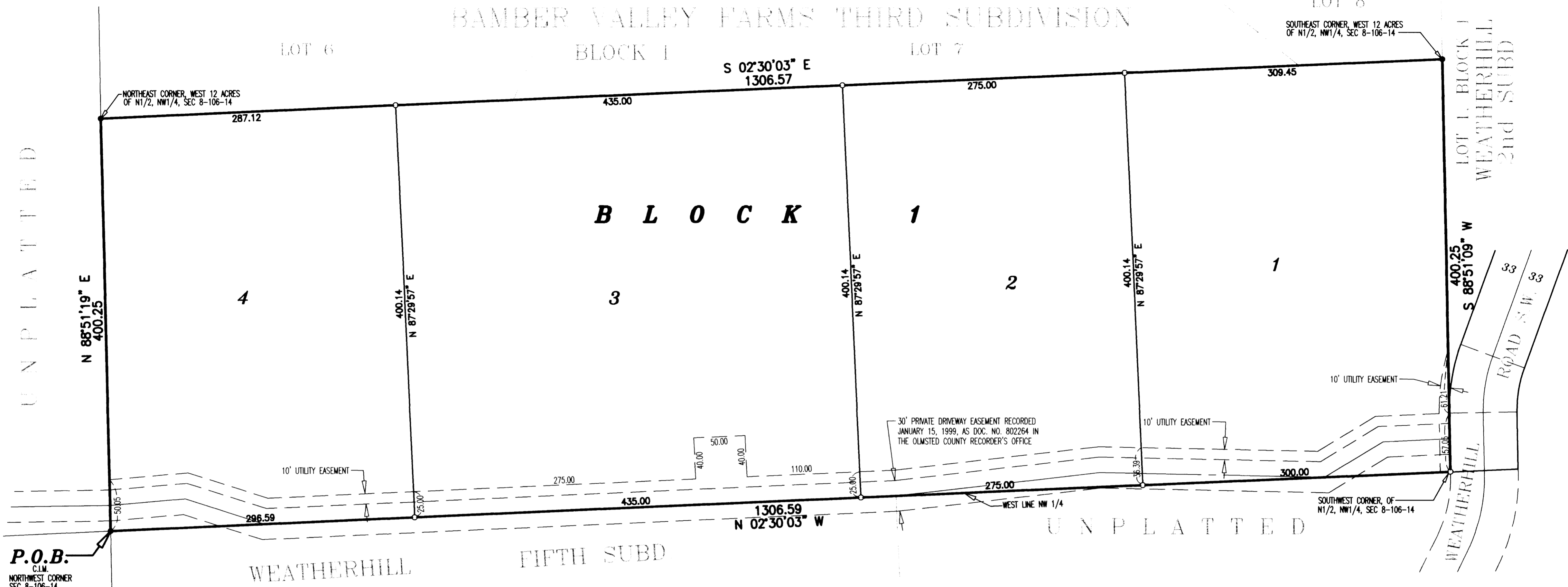


OFFICIAL PLAT

WEATHERHILL WOODS SUBDIVISION

BAMBER VALLEY FARMS THIRD SUBDIVISION



P.O.B.
C.I.M.
NORTHWEST CORNER
SEC 8-106-14

SURVEYOR'S CERTIFICATE

I hereby certify that I have surveyed and platted the property described on this plat as WEATHERHILL WOODS SUBDIVISION; that this plat is a correct representation of the survey; that all distances are correctly shown on the plat in feet and hundredths of a foot; that all monuments have been correctly placed in the ground as shown; that the outside boundary lines are correctly designated on the plat; and that there are no wet lands as defined in MS 505.02, Subd. 1, or public highways to be designated other than as shown.

James E. Swanson
James E. Swanson, L.S.
Minnesota License No. 11622

State of Minnesota
County of Olmsted Dodge

The surveyor's certificate was subscribed and sworn to before me, a Notary Public, this 16 day of April, 1999.

Beth Davis
Notary Public, Olmsted County, Minnesota
My commission expires: 1-31-2000



COUNTY SURVEYOR

I hereby certify that this plat has been checked mathematically and that the plat conforms to the applicable laws, this 26 day of April, 1999.

Edward P. Kusile
Olmsted County Surveyor

TAX STATEMENTS

Taxes due and payable in the year 1999 on the land herein described have been paid, there are no delinquent taxes and transfer has been entered this 18 day of July, 1999.

Daniel Hill
Olmsted County Auditor/Treasurer

By *James E. Swanson* Deputy

COUNTY RECORDER

Document Number 817489
I hereby certify that this instrument was filed in the office of the County Recorder for record on this 16th day of July, 1999, at 3 o'clock P.M., and was duly recorded in the Olmsted County records.

By *Barbara Wall*
County Recorder
Pam Jermoluk
Deputy

TOWNSHIP BOARD

The Township Board of Supervisors of Rochester Township, Olmsted County, do hereby certify that we have approved the accompanying plat. In testimony thereof, we have signed our names this 21 day of April, 1999.

Brenda Dickson Township Board Chairman
Gary Donovan Township Board Clerk

ENVIRONMENTAL COMMISSION

The Olmsted County Environmental Commission has approved the plans for water supply and sewage disposal systems for this plat.

Rob Matis
Olmsted County Environmental Specialist

COUNTY ENGINEER

Approved this 28th day of May, 1999, by Olmsted County Engineer.

Michael Sheehan
Michael Sheehan, County Engineer

INSTRUMENT OF DEDICATION

KNOW ALL MEN BY THESE PRESENTS: That Adamson Family Limited Partnership, a Minnesota Limited Partnership, owner and proprietor of the following described property situated in the County of Olmsted, State of Minnesota, to wit:

The West 12 Acres of the North One Half of the Northwest Quarter of Section 8, Township 106 North, Range 14 West, Olmsted County, Minnesota.

has caused the same to be surveyed and platted as WEATHERHILL WOODS SUBDIVISION and does hereby donate and dedicate to the public for the public use forever the easements as shown on this plat for drainage and utility purposes only.

In witness whereof said Adamson Family Limited Partnership, a Minnesota Limited Partnership, has caused these presents to be signed by its general partners this 22 day of April, 1999.

by *William Adamson* William Adamson, general partner
Caroline Adamson Caroline Adamson, general partner

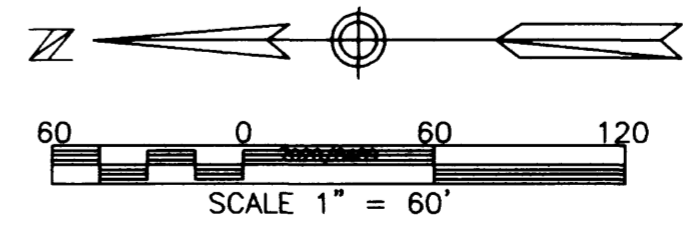
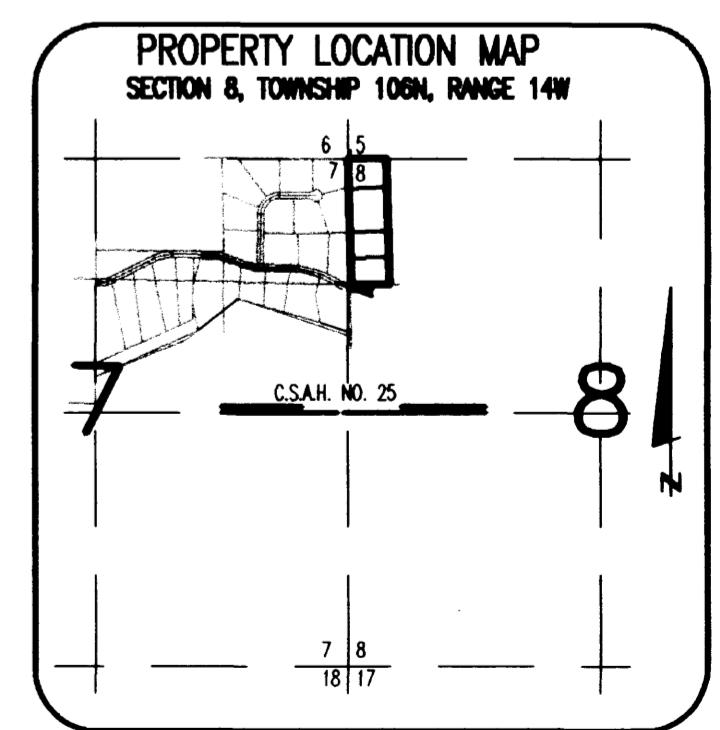
STATE OF MINNESOTA
COUNTY OF OLMSTED Dodge

The foregoing instrument was acknowledged before me this 22 day of April, 1999, by William Adamson, general partner, and *Caroline Adamson*, general partner of Adamson Family Limited Partnership, a Minnesota Limited Partnership, on behalf of the partnership.

Beth Davis
Notary Public, Olmsted County, Minnesota
My commission expires: 1-31-2000



UTILITY EASEMENT defined:
An unobstructed easement for the construction and maintenance of all necessary underground or surface public utilities including rights to conduct drainage and trimming on said easement.



NOTE:
ALL MONUMENTS SHOWN THUS: ○ ARE 5/8" I.D. CAPPED PIPES SET WITH REGISTRATION NO. 11622.

ALL MONUMENTS SHOWN THUS: ● ARE FOUND 5/8" PIPE UNLESS OTHERWISE NOTED.

BASIS OF BEARING SYSTEM:
ALL BEARINGS ARE IN RELATIONSHIP WITH THE EAST LINE N.E. 1/4, SEC 7-106-14 WHICH IS ASSUMED TO BE N02°30'03"W.

PREPARED BY:
MCNEHE & BETTS, INC.
CONSULTING ENGINEERS
PLANNERS, LAND SURVEYORS
ROCHESTER, MINNESOTA