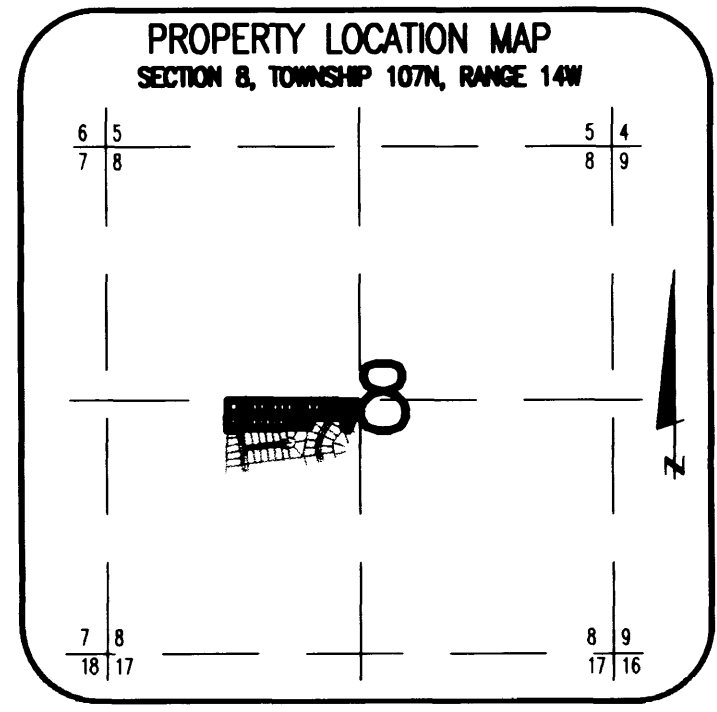
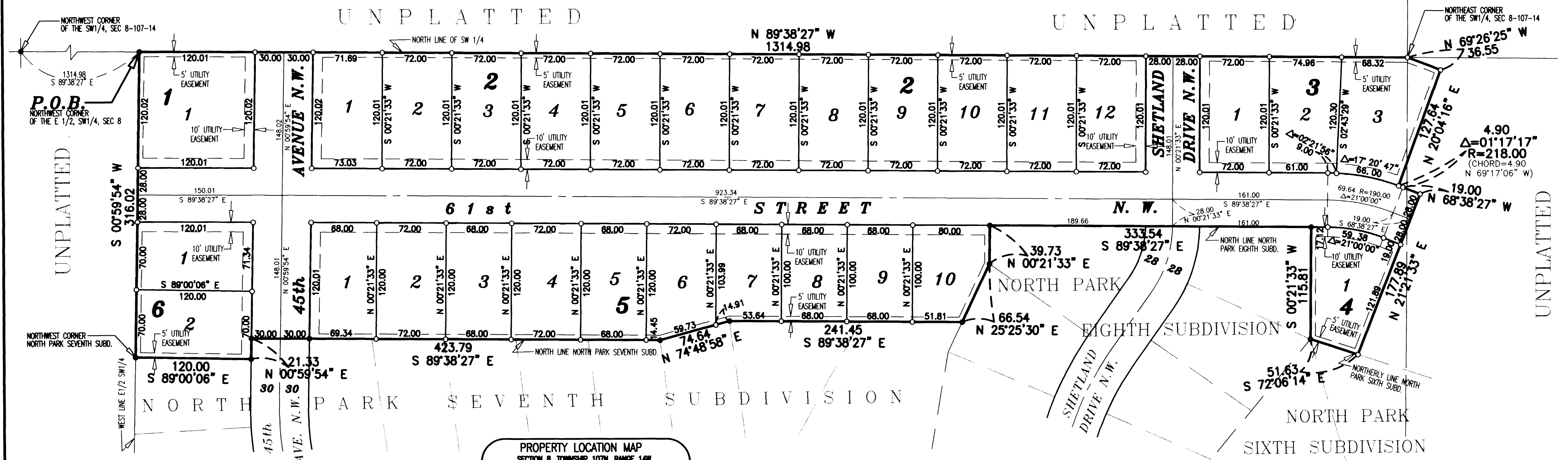


OFFICIAL PLAT

NORTH PARK NINTH SUBDIVISION

UNPLATTED

UNPLATTED



SURVEYOR'S CERTIFICATE

I hereby certify that I have surveyed and platted the property described on this plat as NORTH PARK NINTH SUBDIVISION; that this plat is a correct representation of the survey; that all distances are correctly shown on the plat in feet and hundredths of a foot; that all monuments have been correctly placed in the ground as shown; that the outside boundary lines are correctly designated on the plat; and that there are no wet lands as defined in MS 505.02, Subd. 1, or public highways to be designated other than as shown.

James E. Swanson, L.S. Minnesota License No. 11622

State of Minnesota County of Olmsted

The surveyor's certificate was subscribed and sworn to before me, a Notary Public, this 14th day of November, 1998.

Beth Davis, Notary Public, Olmsted County, Minnesota. My commission expires 1-31-2000.

COUNTY SURVEYOR

I certify that this plat has been checked mathematically, and that the plat conforms to the applicable laws, this 10th day of November, 1998.

Dwight J. Kuisel, County Surveyor

TAX STATEMENTS

Taxes due and payable in the year 1999 on the land herein described have been paid, there are no delinquent taxes and transfer has been entered this 30th day of June, 1998.

Daniel Hall, Olmsted County Auditor/Treasurer. Dawn Campion, Deputy.

CITY APPROVAL

State of Minnesota County of Olmsted City of Rochester

I, Judy K. Scherr, City Clerk, in and for the City of Rochester, do hereby certify that on the 22nd day of November, 1998, the accompanying plat was duly approved by the Common Council of the City of Rochester. In testimony thereof I have hereunto signed my name and affixed the seal of said City of Rochester this 22nd day of November, 1998.

Judy Kay Scherr, City Clerk

COUNTY RECORDER 816948 DOCUMENT NUMBER

I hereby certify that this instrument was filed in the office of the County Recorder for record on this 30th day of June, 1998, at 12 o'clock P.M., and was duly recorded in the Olmsted County records.

Daniel Hall, County Recorder. Nancy Suttcher, Deputy.

INSTRUMENT OF DEDICATION

KNOW ALL MEN BY THESE PRESENTS: That Leslie A. Lurken, a single person, owner and proprietor of the following described property situated in the City of Rochester, State of Minnesota, to wit:

That part of the east half of the Southwest Quarter and of the West Half of the Southeast Quarter of Section 8, Township 107 North, Range 14 West, Olmsted County, Minnesota, described as follows:

Commencing at the northwest corner of the Southwest Quarter of said Section 8; thence South 89 degrees 38 minutes 27 seconds East, assumed bearing, along the north line of said Southwest Quarter, 1314.98 feet to the northwest corner of the East Half of the Southwest Quarter of said Section 8 for the point of beginning; thence South 00 degrees 59 minutes 54 seconds West, 316.02 feet to the northwest corner of NORTH PARK SEVENTH SUBDIVISION (the next 10 courses are along the northerly lines of NORTH PARK SEVENTH SUBDIVISION, NORTH PARK EIGHTH SUBDIVISION, and NORTH PARK SIXTH SUBDIVISION); thence South 89 degrees 00 minutes 06 seconds East, 120.00 feet; thence North 00 degrees 59 minutes 54 seconds East, 21.33 feet; thence South 89 degrees 38 minutes 27 seconds East, 423.79 feet; thence North 74 degrees 48 minutes 58 seconds East, 74.64 feet; thence South 89 degrees 38 minutes 27 seconds East, 241.45 feet; thence North 25 degrees 25 minutes 30 seconds East, 66.54 feet; thence North 00 degrees 21 minutes 33 seconds East, 39.73 feet; thence South 89 degrees 38 minutes 27 seconds East, 333.54 feet; thence South 00 degrees 21 minutes 33 seconds East, 115.81 feet; thence South 72 degrees 06 minutes 14 seconds East, 51.63 feet; thence North 21 degrees 21 minutes 33 seconds East, 177.89 feet; thence North 68 degrees 38 minutes 27 seconds West, 19.00 feet; thence northwesterly 4.90 feet along a nontangential curve concave southerly, central angle of 01 degree 17 minutes 17 seconds, radius of 218.00 feet, and the chord of said curve bears North 69 degrees 17 minutes 06 seconds West, 4.90 feet; thence North 20 degrees 04 minutes 16 seconds East, 127.64 feet; thence North 69 degrees 26 minutes 25 seconds West, 36.55 feet to the northeast corner of the Southwest Quarter of said Section 8; thence North 89 degrees 38 minutes 27 seconds West, along the north line of said Southwest Quarter, 1314.98 feet to the point of beginning.

Containing 7.91 acres more or less.

has caused the same to be surveyed and platted as NORTH PARK NINTH SUBDIVISION and does hereby donate and dedicate to the public for the public use forever the thoroughfares and also dedicate the easements as shown on this plat for drainage and utility purposes only.

UTILITY EASEMENT defined: An unobstructed easement for the construction and maintenance of all necessary underground or surface public utilities including rights to conduct drainage and trimming on said easement.



SCALE 1" = 60'

In witness whereof said Leslie A. Lurken, a single person, has caused these presents to be signed this 10th day of November, 1998.

Leslie A. Lurken

State of Minnesota County of Olmsted Dodge

The foregoing instrument was acknowledged before me this 10th day of November, 1998, by Leslie A. Lurken, a single person.

Beth Davis, Notary Public, Olmsted County, Minnesota. My commission expires 1-31-2000.

NOTE: ALL MONUMENTS SHOWN THIS: ARE 5/8" I.D. CAPPED PIPES SET WITH REGISTRATION NO. 11622. ALL MONUMENTS SHOWN THIS: ARE FOUND 5/8" PIPE UNLESS OTHERWISE NOTED. BASIS OF BEARING SYSTEM: ALL BEARINGS ARE IN RELATIONSHIP WITH THE NORTH LINE S.W. 1/4, SEC 8-107-14 WHICH IS ASSUMED TO BE S 89°38'27" E.

PREPARED BY: McGHEE & BETTS, INC. CONSULTING ENGINEERS PLANNERS, LAND SURVEYORS ROCHESTER, MINNESOTA