



NORTHERN HEIGHTS FIFTH SUBDIVISION. ROCHESTER, MINNESOTA.

BOUNDARY LINES SHOWN THUS 
 MONUMENTS SHOWN THUS 
 MEASUREMENTS IN FEET AND DECIMALS.
 SCALE 1 INCH = 100 FEET.
 1964.

John J. Kerr COUNTY SURVEYOR.
 REGISTERED LAND SURVEYOR NO. 238.

ORIGINAL.

DEDICATION.
 KNOW ALL MEN BY THESE PRESENTS THAT ROCHESTER NORTHERN HEIGHTS INCORPORATED A MINNESOTA CORPORATION, OWNERS AND PROPRIETORS OF THE FOLLOWING DESCRIBED LANDS SITUATE IN THE STATE OF MINNESOTA AND COUNTY OF OLMSTED TO-WIT: ASSUMING THE SOUTH LINE OF THE NORTHWEST QUARTER OF SECTION 25, TOWNSHIP 107, NORTH OF RANGE 14 WEST TO BE A DUE EAST AND WEST LINE AND COMMENCING FOR A PLACE OF BEGINNING AT A POINT IN THE SOUTH LINE WHICH IS EAST 501.5 FEET FROM THE SOUTHWEST CORNER OF SAID NORTHWEST QUARTER, RUNNING THENCE DUE NORTH A DISTANCE OF 400 FEET, THENCE DUE EAST A DISTANCE OF 388.50 FEET, THENCE DUE SOUTH A DISTANCE OF 213.0 FEET, THENCE DUE EAST A DISTANCE OF 676 FEET, THENCE NORTH 87°40' 20" EAST A DISTANCE OF 246.20 FEET, THENCE DUE EAST A DISTANCE OF 320.0 FEET, THENCE DUE SOUTH A DISTANCE OF 52.0 FEET, THENCE DUE EAST A DISTANCE OF 266.41 FEET, THENCE DUE SOUTH A DISTANCE OF 145.0 FEET, THENCE DUE WEST A DISTANCE OF 1896.91 FEET TO THE PLACE OF BEGINNING, THAT THEY HAVE CAUSED THE SAME TO BE SURVEYED AND PLATTED AS "NORTHERN HEIGHTS FIFTH SUBDIVISION" AND DO HEREBY DONATE AND DEDICATE TO THE PUBLIC FOR THE PUBLIC USE THE STREETS AND AVENUES AND A PEDESTRIAN WALK AS SHOWN ON THE ANNEXED PLAT AND ALSO GRANT THE UTILITY EASEMENTS AS SHOWN ON SAID PLAT FOR THE USE OF THE MUNICIPALITY OR OTHER PUBLIC UTILITIES FOR THE INSTALLATION AND MAINTENANCE OF FACILITIES INSTALLED IN AND OVER SAID EASEMENTS TO SERVE ADJACENT OR OTHER PREMISES IN THE VICINITY. IN WITNESS WE HAVE HERE-UN-TO SET OUR HANDS AND SEALS THIS 15TH DAY OF JULY A.D. 1964.
 IN THE PRESENCE OF.

WITNESS: ROCHESTER NORTHERN HEIGHTS INCORPORATED.
Dennis J. Pierce WITNESS: *Dennis J. Pierce* PRESIDENT.
Lloyd Engelsma WITNESS: *Lloyd Engelsma* SECRETARY.

CORPORATE ACKNOWLEDGEMENT.

STATE OF MINNESOTA,
 COUNTY OF OLMSTED, S. S.
 ON THIS 15TH DAY OF JULY A.D. 1964 BEFORE ME A NOTARY PUBLIC PERSONALLY APPEARED DENNIS J. PIERCE AND LLOYD ENGELSMAN TO ME PERSONALLY KNOWN, WHO BEING EACH BY ME DULY SWORN DID SAY THAT THEY ARE RESPECTIVELY THE PRESIDENT AND SECRETARY OF ROCHESTER NORTHERN HEIGHTS INCORPORATED, THAT THE SEAL AFFIXED IS THE CORPORATE SEAL OF SAID CORPORATION AND THAT SAID DENNIS J. PIERCE AND LLOYD ENGELSMAN ACKNOWLEDGE SAID INSTRUMENT TO BE THE FREE ACT AND DEED OF SAID CORPORATION.

W. E. Abbe NOTARY PUBLIC, OLMSTED COUNTY, MINNESOTA.
 MY COMMISSION EXPIRES APRIL 1, 1972.

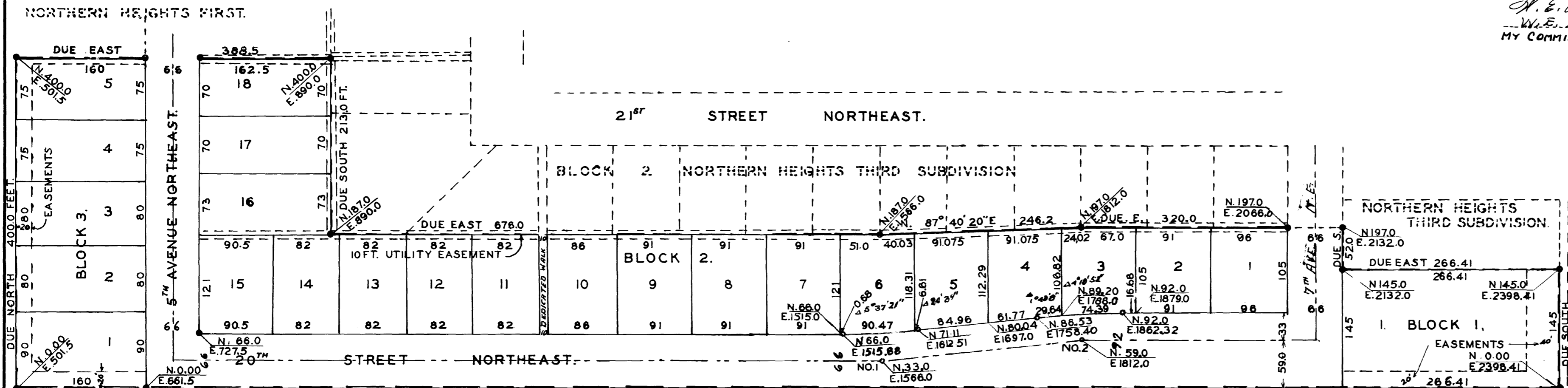
SURVEYORS CERTIFICATE.

STATE OF MINNESOTA,
 COUNTY OF OLMSTED, S. S.
 I, JOHN J. KERR COUNTY SURVEYOR IN AND FOR SAID COUNTY DO HEREBY CERTIFY THAT I HAVE SURVEYED AND PLATTED THE PROPERTY DESCRIBED ON THIS PLAT AS NORTHERN HEIGHTS FIFTH SUBDIVISION, THAT THE PLAT IS A CORRECT REPRESENTATION OF SAID SURVEY AS MADE, THAT ALL DISTANCES ARE SHOWN IN FEET AND DECIMALS OF A FOOT, THAT MONUMENTS FOR THE GUIDANCE OF FUTURE SURVEYS HAVE BEEN PLACED IN THE GROUND AS SHOWN ON SAID PLAT, THAT THE OUTSIDE BOUNDARIES ARE CORRECTLY DESIGNATED, THAT THERE ARE NO WET LANDS OR PUBLIC HIGHWAYS TO BE DESIGNATED OTHER THAN AS SHOWN.

John J. Kerr COUNTY SURVEYOR.
 REGISTERED LAND SURVEYOR NO. 238.

STATE OF MINNESOTA,
 COUNTY OF OLMSTED,
 CITY OF ROCHESTER, S. S.
 I, ELPREDA REITER CITY CLERK IN AND FOR SAID CITY OF ROCHESTER DO HEREBY CERTIFY THAT THE ACCOMPANYING PLAT WAS DULY APPROVED BY THE COMMON COUNCIL OF THE CITY OF ROCHESTER, IN TESTIMONY WHEREOF I HAVE SET MY HAND AND AFFIXED THE SEAL OF SAID CITY THIS 21ST DAY OF JULY A.D. 1964.

Elfreda Reiter CITY CLERK.



PLACE OF BEGINNING IS 501.5 FEET EAST OF THE WEST QUARTER CORNER OF SECTION 25 WHICH IS COORDINATE NORTH 0.00 FEET, EAST 0.00 FEET.

CURVE DATA.

CURVE	ANGLE	DEGREE	RADIUS	TANGENT LENGTH	COORDINATE OF CURVE P.I.
NO.1	6° 2' LT.	6°	954.93	50.32	100.555 N. 33.00 E. 1566.00
NO.2	6° 2' RT	6°	954.93	50.32	100.555 N. 59.00 E. 1812.00

NOTE = LOT DIMENSIONS ON CURVES ARE ARC MEASUREMENT.

TAXES PAID FOR THE YEAR OF 1964.

Karl Foster COUNTY TREASURER

TAXES PAID AND TRANSFER ENTERED THIS 12TH DAY OF November 1964.

Rosalyn Spang COUNTY AUDITOR.

STATE OF MINNESOTA,
 COUNTY OF OLMSTED, S. S.
 FILED FOR RECORD THIS 13TH DAY OF November A.D. 1964.
 AT 11:40 O'CLOCK A.M. AND RECORDED IN BOOK OF PLATS PAGE...

Harry A. Evans REGISTER OF DEEDS.
Lloyd J. Jensen deputy