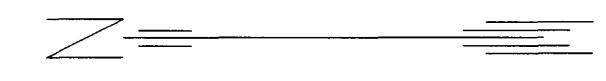


SPEER'S SECOND



Surveyor's Certificate

I hereby certify that I have surveyed and platted the property described on this plat as SPEER'S SECOND; that this plat is a correct representation of the survey; that all distances are correctly shown on the plat in feet and hundredths of a foot; that all monuments have been correctly placed in the ground as shown; that the outside boundary lines are correctly designated on the plat; and that there are no wetlands as defined in MS 505.02, Subd. 1, or public highways to be designated than as shown.

Geoffrey G. Griffin
GEOFFREY G. GRIFFIN, L.S.
Minnesota License Number 21940

State of Minnesota
County of FILLMORE
The surveyor's certificate was subscribed and sworn to before me, a Notary Public, this 8th day of September, 1997.

Matthew J. Griffl
Notary Public, Fillmore County, Minnesota

My commission expires: January 31, 2000



County Surveyor

I certify that this plat has been checked mathematically and that the plat conforms to the applicable laws, this 2nd day of Sept., 1997.

Edward P. Kivela
Olmsted County Surveyor

Tax Statements

Taxes payable in the year 1997 on the land herein described have been paid, there are no delinquent taxes and transfer has been entered this 22 day of June, 1997.

Eric Hall
Olmsted County Auditor/Treasurer
By Bruce Waugh Deputy

City Approval

State of Minnesota
County of Olmsted
City of Dover

We Roger Ihrke, Mayor, and Karen Henry, City Clerk, in and for the City of Dover, do hereby certify that on the 5 day of August, 1997, the accompanying plat was duly approved by the Common Council of the City of Dover. In testimony thereof I have hereunto signed my name and affixed the seal of said City of Dover this 22 day of September, 1997.

Roger P. Ihrke
Mayor, Roger Ihrke

Karen Henry
City Clerk, Karen Henry

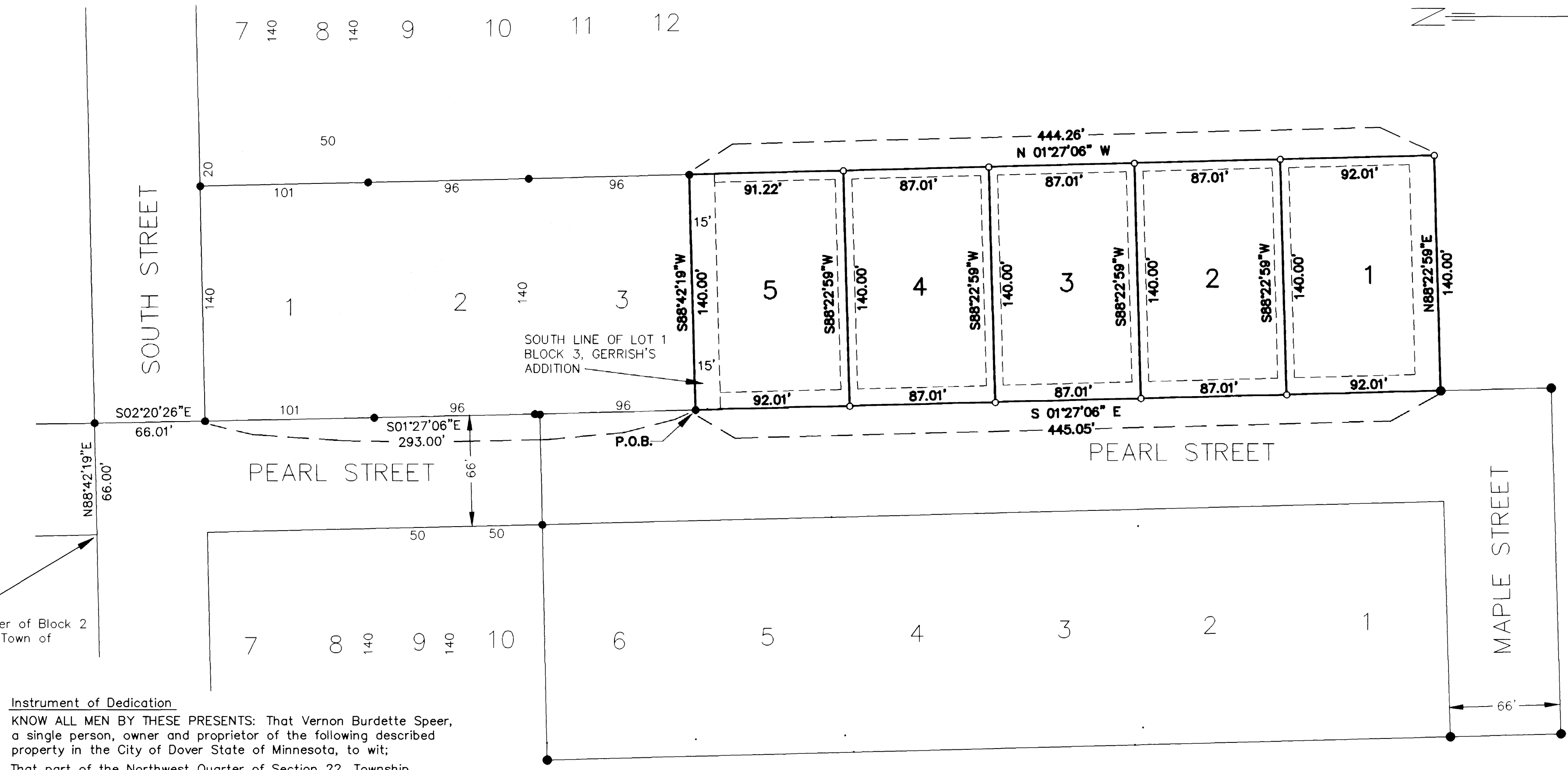
County Recorder 816259

DOCUMENT NUMBER _____

I hereby certify that this instrument was filed in the Office of the County Recorder for record on this 22nd day of June, 1997, at 2 o'clock P.M., and was duly recorded in the Olmsted County records.

Denise J. Hill
County Recorder

Jan. Hammett
Deputy



Instrument of Dedication

KNOW ALL MEN BY THESE PRESENTS: That Vernon Burdette Speer, a single person, owner and proprietor of the following described property in the City of Dover State of Minnesota, to wit:
That part of the Northwest Quarter of Section 22, Township 106 North, Range 11 West, City of Dover, Olmsted County, and that part of Block 3, Gerrish's Addition to Dover Center, on file and of record in the Office of the Olmsted County Recorder, Olmsted County, Minnesota, described as follows:

Commencing at the southeast corner of Block 2 in the Original Town of Dover Center; thence North 88°42'19" East (NOTE: all bearings are in relationship with the south line of the Northwest Quarter of said Section 22 which is the same bearing system used in MARKHAM'S SUBDIVISION) along the north line of South Street for a distance of 66.00 feet; thence South 02°20'26" East for a distance of 66.01 feet to the south line of said South Street; thence South 01°27'06" East along the east line of Pearl Street for a distance of 293.00 feet and the Point of Beginning of the Parcel to be described; thence continuing South 01°27'06" East feet along the east line of Pearl Street to the north line of Maple Street for a distance of 445.05 feet; thence North 88°22'59" East along the north line of said Maple Street for a distance of 140.00 feet; thence North 01°27'06" West parallel to said east line of Pearl Street for a distance of 444.26 feet; thence South 88°42'19" West to said east line of Pearl Street and the Point of Beginning a distance of 140.00 feet; containing 1.43 Acres.

Have caused the same to be surveyed and platted as SPEER'S SECOND and do hereby donate and dedicate to the public for the public use forever the thoroughfare and also dedicate the easements as shown on this plat for drainage and utility purposes only.

In witness whereof said Vernon Burdette Speer, a single person, has caused these presents to be signed by its proper officers this 16th day of June, 1997.

Vernon Burdette Speer
Vernon Burdette Speer

State of Minnesota
County of Olmsted
The foregoing instrument was acknowledged before me this 16th day of June, 1997, by Vernon Burdette Speer

Monica G. Griffin
Notary Public, Olmsted County, Minnesota

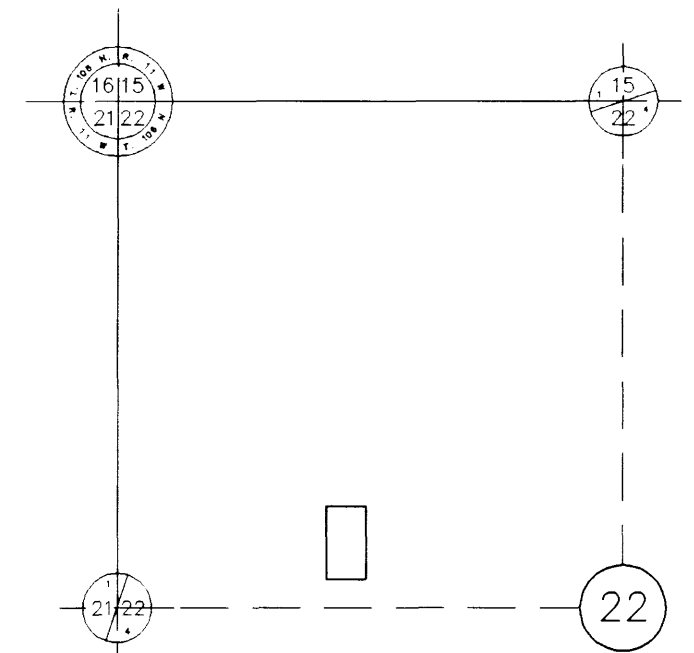
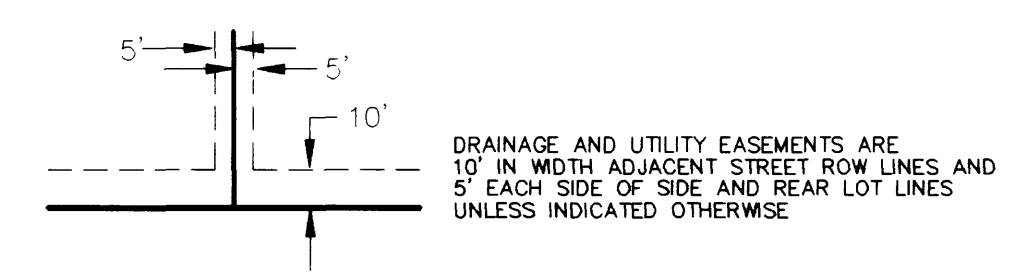
My commission expires: 1-31-2000



BASIS OF BEARING SYSTEM:
ALL BEARINGS ARE IN RELATIONSHIP WITH THE SOUTH LINE OF THE NW1/4 SECTION 22-106-11 WHICH IS ASSUMED TO BE S88°43'16"W

DRAINAGE EASEMENT DEFINED:
An unobstructed easement for the operation and maintenance of waterways, both surface and underground, running over, across, and under said easement.

UTILITY EASEMENT DEFINED:
An unobstructed easement for the construction and maintenance of all necessary underground or surface public utilities including rights to conduct drainage and trimming on said easement.



VICINITY MAP
NOT TO SCALE

- IRON PIPE WITH PLASTIC CAP STAMPED R.L.S.#21940 SET
- FOUND 1/2" CAPPED PIPE/#8952

