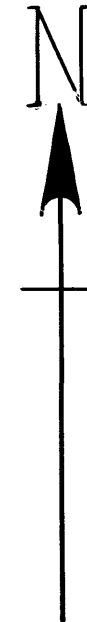


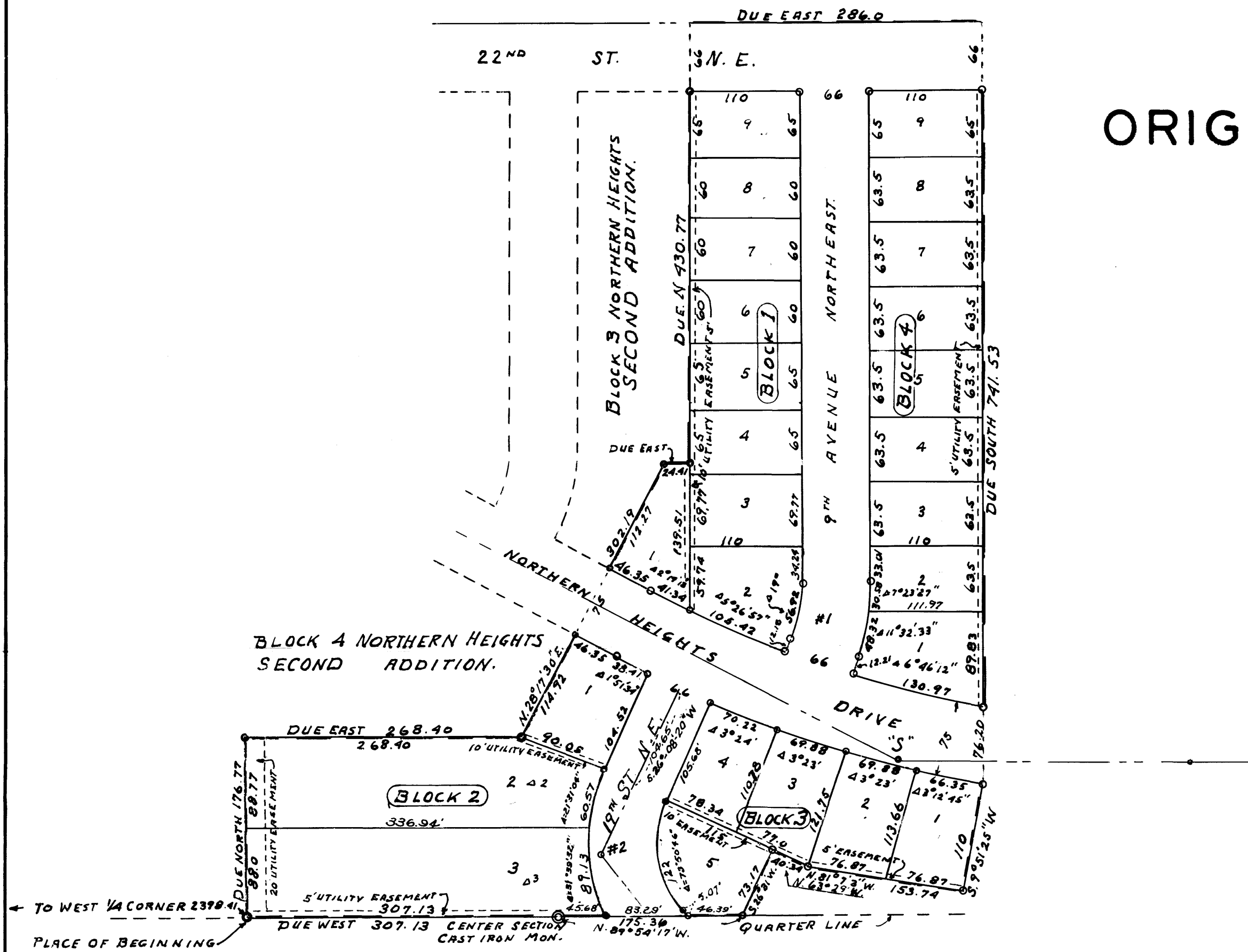
# NORTHERN HEIGHTS FOURTH SUBDIVISION. ROCHESTER, MINNESOTA.

BOUNDARY LINES SHOWN THUS   
 MONUMENTS SHOWN THUS   
 MEASUREMENTS IN FEET AND DECIMALS  
 SCALE 1 INCH = 100 FEET

1963.  
*John J. Kerr* COUNTY SURVEYOR.  
 REGISTERED LAND SURVEYOR NO. 238.



ORIGINAL.



**CURVE DATA.**

CURVE	ANGLE	DEGREE	RADIUS	TANGENT	LENGTH
#1	19°	28'	204.63	34.24	67.86
#2	61°07'56"	44°30'28"	128.30	75.78	136.89
"S"	28°17'30"	5°	1145.92	288.81	565.83

NOTE: ALL MEASUREMENTS ON CURVES ARE ARC MEASUREMENTS.

DEDICATION.

KNOW ALL MEN BY THESE PRESENTS THAT ROCHESTER NORTHERN HEIGHTS INCORPORATED, A MINNESOTA CORPORATION, OWNERS AND PROPRIETORS OF THE FOLLOWING DESCRIBED LANDS SITUATE IN THE STATE OF MINNESOTA AND COUNTY OF OLMSTED TO-WIT: ASSUMING THE SOUTH LINE OF THE NORTHWEST QUARTER OF SECTION 25, TOWNSHIP 107, NORTH OF RANGE 14 WEST TO BE A DUE EAST AND WEST LINE AND COMMENCING AT A POINT IN THE SOUTH LINE OF SAID NORTHWEST 1/4 WHICH IS 2398.41 FEET EAST OF THE WEST 1/4 CORNER OF SAID SECTION, RUNNING THENCE DUE NORTH A DISTANCE OF 176.77 FEET, THENCE DUE EAST A DISTANCE OF 268.40 FEET, THENCE NORTH 28°17'30" EAST A DISTANCE OF 302.19 FEET, THENCE DUE EAST A DISTANCE OF 24.41 FEET, THENCE DUE NORTH A DISTANCE OF 430.77 FEET, THENCE DUE EAST A DISTANCE OF 286.0 FEET, THENCE DUE SOUTH A DISTANCE OF 741.53 FEET, THENCE SOUTH 9°51'25" WEST A DISTANCE OF 110.0 FEET, THENCE NORTH 81°7'3" WEST A DISTANCE OF 153.74 FEET, THENCE NORTH 63°29' WEST A DISTANCE OF 40.34 FEET, THENCE SOUTH 26°31' WEST A DISTANCE OF 73.17 FEET TO A POINT IN THE SOUTH LINE OF THE NORTHEAST 1/4 OF SAID SECTION, THENCE NORTH 89°54'17" WEST ALONG SAID SOUTH LINE A DISTANCE OF 175.36 FEET TO THE CENTER OF SAID SECTION, THENCE DUE WEST A DISTANCE OF 307.13 FEET TO THE PLACE OF BEGINNING, THAT WE HAVE CAUSED THE SAME TO BE SURVEYED AND PLATTED AS NORTHERN HEIGHTS FOURTH SUBDIVISION, AND DO HEREBY DONATE AND DEDICATE TO THE PUBLIC FOR THE PUBLIC USE THE STREETS AND AVENUES AS SHOWN ON THE ANNEXED PLAT AND ALSO GRANT THE UTILITY EASEMENTS AS SHOWN ON SAID PLAT FOR THE USE OF THE MUNICIPALITY OR OTHER PUBLIC UTILITIES FOR THE INSTALLATION AND MAINTENANCE OF FACILITIES UNDERGROUND OR OVER SAID EASEMENTS TO SERVE ADJACENT AND OTHER PREMISES IN THE VICINITY. IN WITNESS WE HAVE HERE-UNTO SET OUR HANDS AND SEALS THIS 16th DAY OF JULY A.D. 1963.

..... WITNESS. ROCHESTER NORTHERN HEIGHTS INCORPORATED.  
*Dennis J. Pierce* BY ATTEST *Dennis J. Pierce* PRESIDENT.  
*George H. Mader* WITNESS. BY ATTEST *Lloyd Engelsma* SECRETARY.  
 CORPORATE ACKNOWLEDGEMENT.

STATE OF MINNESOTA, COUNTY OF OLMSTED, S. S.  
 ON THIS 16th DAY OF JULY A.D. 1963 BEFORE ME A NOTARY PUBLIC PERSONALLY APPEARED DENNIS J. PIERCE AND *Lloyd Engelsma* TO ME PERSONALLY KNOWN, WHO BEING EACH BY ME DULY SWORN DID SAY THAT THEY ARE RESPECTIVELY THE PRESIDENT AND SECRETARY OF ROCHESTER NORTHERN HEIGHTS INC. THAT THE SEAL AFFIXED IS THE CORPORATE SEAL OF SAID CORPORATION AND THAT SAID INSTRUMENT WAS SIGNED AND SEALED IN ITS BEHALF BY AUTHORITY OF ITS MEMBERS AND THE SAID DENNIS J. PIERCE AND *LOYD ENGELSMAN* ACKNOWLEDGE SAID INSTRUMENT TO BE THE FREE ACT AND DEED OF SAID CORPORATION.

*Roy E. K. Schall* NOTARY PUBLIC, OLMSTED COUNTY, MINNESOTA.  
 MY COMMISSION EXPIRES Dec. 18-1964.

SURVEYORS CERTIFICATE.

STATE OF MINNESOTA, COUNTY OF OLMSTED, S. S.  
 I, JOHN J. KERR COUNTY SURVEYOR IN AND FOR SAID COUNTY DO HEREBY CERTIFY THAT I HAVE SURVEYED AND PLATTED THE PROPERTY DESCRIBED ON THIS PLAT AS NORTHERN HEIGHTS FOURTH SUBDIVISION, THAT THE PLAT IS A CORRECT REPRESENTATION OF SAID SURVEY AS MADE, THAT ALL DISTANCES ARE CORRECTLY SHOWN IN FEET AND DECIMALS OF A FOOT, THAT MONUMENTS FOR THE GUIDANCE OF FUTURE SURVEYS HAVE BEEN PLACED IN THE GROUND AS SHOWN ON SAID PLAT, THAT THE OUTSIDE BOUNDARIES ARE CORRECTLY DESIGNATED THAT THERE ARE NO WET LANDS THEREON OR PUBLIC HIGHWAYS TO BE DESIGNATED OTHER THAN AS SHOWN.

*John J. Kerr* COUNTY SURVEYOR.  
 REGISTERED LAND SURVEYOR NO. 238.

STATE OF MINNESOTA, COUNTY OF OLMSTED, S. S.  
 CITY OF ROCHESTER, S. S.  
 I, ELFREDA REITER CITY CLERK IN AND FOR SAID CITY OF ROCHESTER DO HEREBY CERTIFY THAT THE ACCOMPANYING PLAT WAS DULY APPROVED BY THE COMMON COUNCIL OF THE CITY OF ROCHESTER, IN TESTIMONY WHEREOF I HAVE SET MY HAND AND AFFIXED THE SEAL OF SAID CITY THIS 13th DAY OF August A.D. 1963.

*Elfreda Reiter* CITY CLERK.

TAXES PAID FOR THE YEAR OF 1964.

*Karl H. Reiter* COUNTY TREASURER

TAXES PAID AND TRANSFER ENTERED THIS 13th DAY OF August 1963.

*Ruth E. Evans* COUNTY AUDITOR.

STATE OF MINNESOTA, COUNTY OF OLMSTED, S. S.  
 FILED FOR RECORD THIS 16th DAY OF August A.D. 1963 AT 10 O'CLOCK P. M.  
 AND RECORDED IN BOOK OF PLATS Page

*Mary J. Gowan* REGISTER OF DEEDS.