

HILLVIEW RESUBDIVISION OF OUTLOT 1, BLOCK 25, AND OUTLOT 2, BLOCK 26, ELTON HILLS SEVENTH SUBDIVISION

ROCHESTER, MINNESOTA



SCALE: 1" = 50'
0 DENOTES IRON PIN
- - - DENOTES UTILITY EASEMENT

℄ CURVE DATA
Δ = 49°37'
D = 24°00'
T = 110.35'
L = 206.74'
R = 238.73'

ASSUMED HEIGHTS

SURVEYOR'S CERTIFICATE

I, Leonard M. Sankstone, Registered Land Surveyor, do hereby certify that at the request of Fred L. Sauer and Jeannette H. Sauer, his wife, I have surveyed and platted into lots, blocks, outlot and easements, as shown on the accompanying plat on which this certificate is written, the following described tract:

Outlot 1, Block 25, and Outlot 2, Block 26, Elton Hills Seventh Subdivision, as platted, City of Rochester, County of Olmsted, State of Minnesota, and I further certify that said plat is a true and correct record of the survey and that all distances are correctly shown in feet and decimals of feet, that monuments (iron pins) for the guidance of future surveys have been placed on the ground as shown thus (o), that the outside boundaries are correctly shown on the plat, that there are no wet lands thereon, and that said plat has been previously platted as a part of Elton Hills Seventh Subdivision.

Dated this 07th day of JUNE, 1964 A. D.

Leonard M. Sankstone
Leonard M. Sankstone
Registered Land Surveyor No. 5325

Subscribed and sworn before me a Notary Public this 07th day of JUNE, 1964 A. D.
My Commission Expires APRIL 1, 1970.

W.E. Agneberg
Notary Public, Olmsted County, Minnesota
W.E. AGNEBERG

DEDICATION

We, the undersigned, certify that we are the sole interested parties in the tract of land described in the foregoing Surveyors Certificate, which is written on the plat on which this instrument is written, that we have caused the same to be surveyed and platted into lots, blocks, outlot and easements under the name of HILLVIEW RESUBDIVISION OF OUTLOT 1, BLOCK 25, AND OUTLOT 2, BLOCK 26, ELTON HILLS SEVENTH SUBDIVISION as shown by said plat and that we do hereby grant the easements shown thereon.

In The Presence Of:

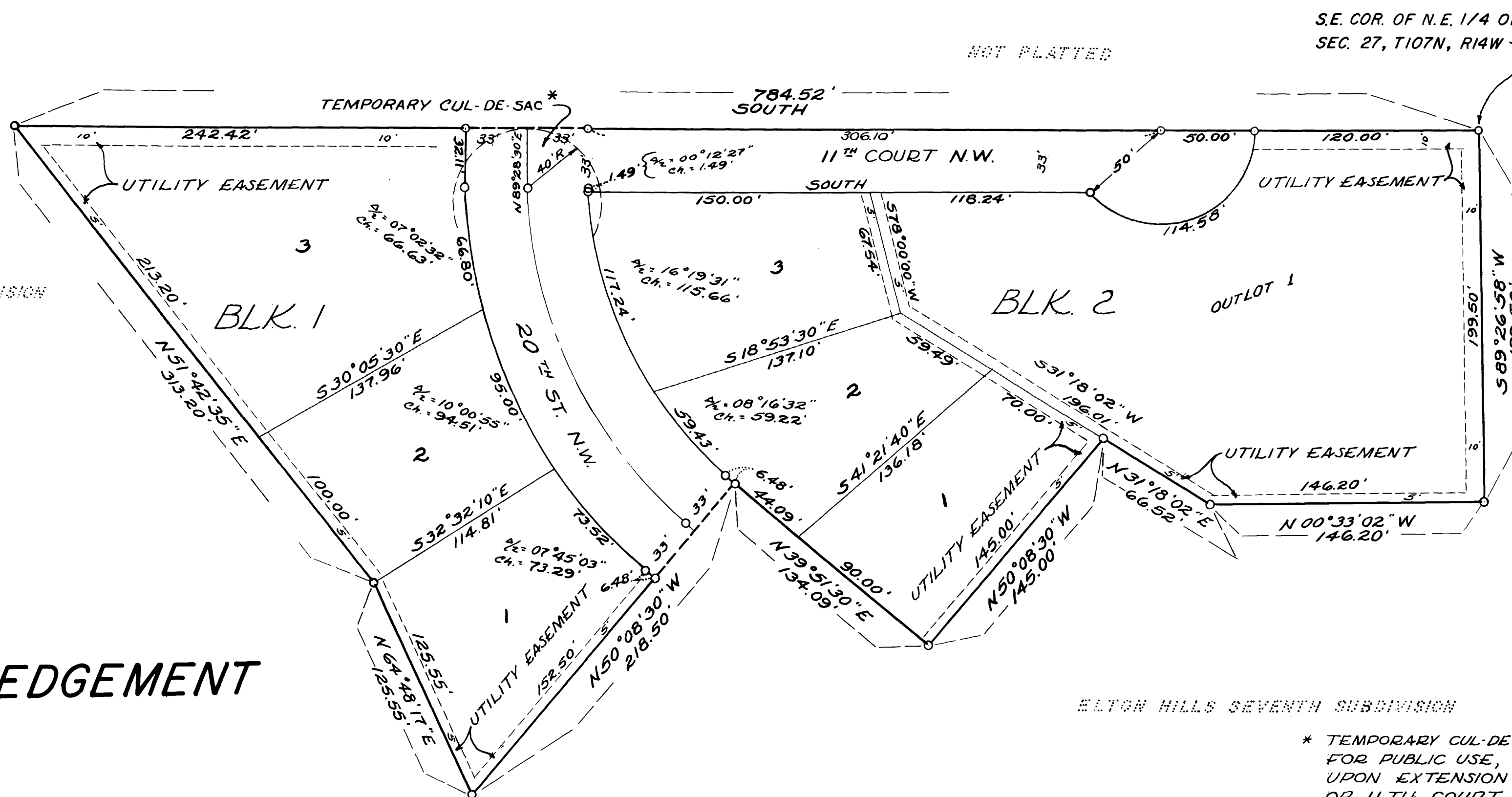
Signed By:

Reginald A. Zentz

Fred L. Sauer
Fred L. Sauer

Marjorie E. Soffel

Jeannette H. Sauer
Jeannette H. Sauer



ACKNOWLEDGEMENT

State of Minnesota)
County of Olmsted) SS.
City of Rochester)

I, Elfreda Reiter, City Clerk in and for said City of Rochester do hereby certify that on the 10th day of July, 1964 A. D. the accompanying and annexed plat was duly approved by the Common Council of the City of Rochester. In testimony thereof I have hereunto signed my name and affixed the seal of said City of Rochester this 10th day of July, 1964 A. D.

Elfreda Reiter
City Clerk of the City of Rochester,
Minnesota

State of Minnesota) SS.
County of Olmsted)

On this 10th day of JUNE, 1964 A. D. before me a notary public in and for said county personally appeared FRED L. SAUER and JEANNETTE H. SAUER, his wife, to me personally known, who being each duly sworn, did say that they are the owners and proprietors of the above described property and acknowledged said instrument to be their free act and deed.

Leonard M. Sankstone
Notary Public, Olmsted County
My Commission Expires: OCT 16, 1967

LEONARD SANKSTONE
Notary Public, Olmsted County, Minn.
My Commission Expires October 16, 1967

State of Minnesota) SS.
County of Olmsted)

Filed for record this 3rd day of August, 1964 A. D. at 1:12 o'clock P. M. in Book of Plats on Page Instrument No. 11638.

Henry J. Edward
Register of Deeds, Olmsted County, Minnesota
Ernest P. Dudgeon, Deputy

Taxes paid and transfer entered this 3rd day of August, 1964 A. D.

Ernest P. Dudgeon
County Auditor, Olmsted County, Minnesota

Taxes for the year 1964 on the lands described within are paid.

Karl H. Potter
County Treasurer

Utility Easement defined:
Easement for construction and maintenance of all necessary overhead, underground or surface, public and private utilities, including rights to conduct drainage and trimming on said easement.