

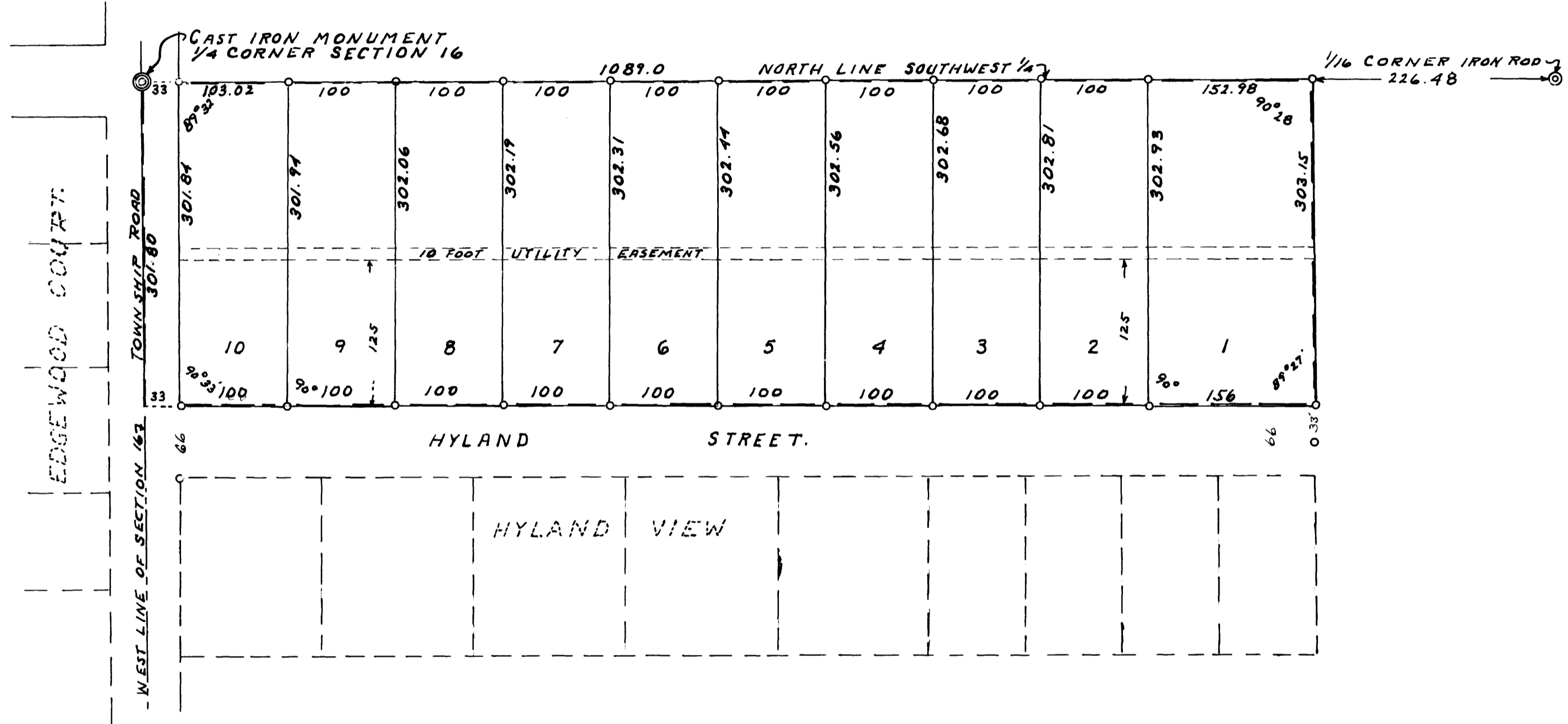
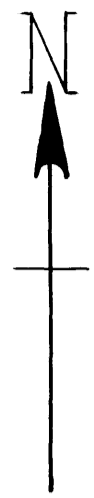
ORIGINAL

HYLAND VIEW SUBDIVISION NUMBER TWO.

OLMSTED COUNTY, MINNESOTA.

PROPERTY BOUNDARIES SHOWN THUS ———
MONUMENTS SHOWN THUS ○ = 1/2" STEEL.
SCALE 1 INCH = 100 FEET.

1962.
John J. Kerr COUNTY SURVEYOR.
REGISTERED LAND SURVEYOR NO. 238.



DEDICATION.
KNOW ALL MEN BY THESE PRESENTS THAT FRANCIS J. CONWAY AND PHILOMENE T. CONWAY (HIS WIFE) AND JOHN A. PAPIERNIAK AND JOSEPHINE PAPIERNIAK (HIS WIFE) OWNERS AND PROPRIETORS OF THE FOLLOWING DESCRIBED LANDS SITUATE IN THE STATE OF MINNESOTA AND COUNTY OF OLMSTED TO-WIT: COMMENCING AT THE NORTHWEST CORNER OF THE SOUTHWEST QUARTER OF SECTION 16, TOWNSHIP 106, NORTH OF RANGE 13 WEST OF THE 5TH PRINCIPAL MERIDIAN AND RUNNING THENCE EAST ALONG THE NORTH LINE OF THE SOUTHWEST 1/4 A DISTANCE OF 1089.0 FEET, THENCE SOUTH PARALLEL WITH THE WEST LINE OF SAID SECTION A DISTANCE OF 303.15 FEET, THENCE WEST A DISTANCE OF 1089.0 FEET TO THE WEST LINE OF SAID SECTION, THENCE NORTH ALONG SAID WEST LINE A DISTANCE OF 301.80 FEET TO THE PLACE OF BEGINNING, THAT WE HAVE CAUSED THE SAME TO BE SURVEYED, STAKED AND PLATTED INTO LOTS AND A PUBLIC ROAD SUCH SUBDIVISION TO BE KNOWN AND DESIGNATED AS "HYLAND VIEW SUBDIVISION NUMBER TWO", THAT WE DO HEREBY DONATE AND DEDICATE TO THE PUBLIC FOR THE PUBLIC USE FOREVER THE ROADS AS SHOWN ON THE ANNEXED PLAT AND WE DO ALSO GRANT EASEMENT FOR PUBLIC UTILITIES AS INDICATED ON SAID PLAT FOR THE INSTALLATION AND MAINTENANCE OF FACILITIES INSTALLED IN AND OVER SAID EASEMENTS TO SERVE ADJACENT AND OR OTHER PREMISES IN THE VICINITY. IN WITNESS WHEREOF WE HAVE HERE-UN-TO SET OUR HANDS AND SEALS THIS 14TH DAY OF DECEMBER A.D. 1963. IN THE PRESENCE OF:

Elva Pedersen WITNESS. *Francis J. Conway* FRANCIS J. CONWAY
Carol A. Heidemann WITNESS. *Philomene T. Conway* PHILOMENE T. CONWAY
Elva Pedersen WITNESS. *John A. Papierniak* JOHN A. PAPIERNIAK
Carol A. Heidemann WITNESS. *Josephine Papierniak* JOSEPHINE PAPIERNIAK

ACKNOWLEDGEMENT.

STATE OF MINNESOTA,
COUNTY OF OLMSTED, S. S.
ON THIS 14TH DAY OF DECEMBER A.D. 1963 BEFORE ME A NOTARY PUBLIC PERSONALLY APPEARED FRANCIS J. CONWAY AND PHILOMENE T. CONWAY (HIS WIFE) AND JOHN A. PAPIERNIAK AND JOSEPHINE PAPIERNIAK (HIS WIFE) TO ME KNOWN TO BE THE PERSONS DESCRIBED IN AND WHO EXECUTED THE FOREGOING INSTRUMENT AND THEY ACKNOWLEDGED THAT THEY EXECUTED THE SAME AS THEIR FREE ACT AND DEED.

A.P. Wittich NOTARY PUBLIC, OLMSTED COUNTY, MINNESOTA.
MY COMMISSION EXPIRES 26TH DAY OF JULY 1970.
A.P. WITTICH

SURVEYOR'S CERTIFICATE.

STATE OF MINNESOTA,
COUNTY OF OLMSTED, S. S.
I, JOHN J. KERR COUNTY SURVEYOR IN AND FOR SAID COUNTY DO HEREBY CERTIFY THAT I HAVE SURVEYED STAKED AND PLATTED THE LANDS DESCRIBED ON THIS PLAT AS HYLAND VIEW SUBDIVISION NUMBER TWO THAT THE PLAT IS A TRUE REPRESENTATION OF SAID SURVEY AS MADE, THAT ALL DISTANCES ARE SHOWN ON THE PLAT IN FEET AND DECIMALS OF A FOOT, THAT MONUMENTS FOR THE GUIDANCE OF FUTURE SURVEYS HAVE BEEN PLACED IN THE GROUND AS SHOWN ON SAID PLAT, THAT THE OUTSIDE BOUNDARIES ARE CORRECTLY SHOWN, THAT THERE ARE NO WET LANDS OR PUBLIC HIGHWAYS TO BE DESIGNATED OTHER THAN AS SHOWN. DATED THIS 1ST DAY OF AUGUST A.D. 1962.

John J. Kerr COUNTY SURVEYOR.
REGISTERED LAND SURVEYOR NO. 238.

STATE OF MINNESOTA,
COUNTY OF OLMSTED, S. S.
I, ROSS BROWNING COUNTY AUDITOR IN AND FOR SAID COUNTY DO HEREBY CERTIFY THAT THE ATTACHED PLAT WAS DULY APPROVED BY THE BOARD OF COUNTY COMMISSIONERS AT A MEETING HELD ON THIS 23RD DAY OF DECEMBER 1963, IN TESTIMONY WHEREOF I HAVE SIGNED MY NAME AND AFFIXED THE SEAL OF SAID COUNTY THIS 23RD DAY OF DECEMBER 1963.

Ross Browning COUNTY AUDITOR.

TAXES PAID FOR THE YEAR 1962.

Frank J. ... COUNTY TREASURER.

TAXES PAID AND TRANSFER ENTERED THIS 23RD DAY OF DECEMBER 1963.

Ross Browning COUNTY AUDITOR.

STATE OF MINNESOTA,
COUNTY OF OLMSTED, S. S.
FILED FOR RECORD THIS 24TH DAY OF DECEMBER A.D. 1963 AT 8 O-CLOCK A.M.
AND RECORDED IN BOOK OF PLATS PAGE

Henry J. ... REGISTER OF DEEDS.

APPROVED AS TO WATER SUPPLY AND SEWAGE DISPOSAL THIS 13TH DAY OF August 1962.

BY *Viktor Wilson, M.D.* HEALTH OFFICER.
ROCHESTER OLMSTED COUNTY HEALTH UNIT.

APPROVED THIS 13TH DAY OF September 1962.
BOARD OF SUPERVISORS MARION TOWNSHIP, OLMSTED COUNTY, MINNESOTA. (APPROVED UNDER 1945 M.S.A. 349.12 AND OVERRULING THE OLMSTED COUNTY PLANNING COMMISSION).

Wm O'Neill CHAIRMAN.
Paul Rufow SUPERVISOR.
Robert Schomfeld SUPERVISOR.