

OFFICIAL PLAT

DIAMOND RIDGE FOURTEEN

SURVEYOR'S CERTIFICATE

I hereby certify that I have surveyed and platted the property described on this plat as DIAMOND RIDGE FOURTEEN; that this plat is a correct representation of the survey; that all distances are correctly shown on the plat in feet and hundredths of a foot; that all monuments have been correctly placed in the ground as shown; that the outside boundary lines are correctly designated on the plat; and that there are no wet lands as defined in MS 505.02, Subd. 1, or public highways to be designated other than as shown.

James E. Swanson
James E. Swanson, L.S.
Minnesota License No. 11622

State of Minnesota
County of Olmsted Dodge

The surveyor's certificate was subscribed and sworn to before me, a Notary Public, this 3rd day of November, 1998.

Beth Davis
Notary Public, Olmsted County, Minnesota
Dodge

My commission expires: 1-31-2000

COUNTY SURVEYOR

I certify that this plat has been checked mathematically, and that the plat conforms to the applicable laws, this 2 day of November, 1998.

Edward J. Baker
County Surveyor

TAX STATEMENTS

Taxes due and payable in the year 1999 on the land herein described have been paid; there are no delinquent taxes and transfer has been entered this 22 day of March, 1998, 1999.

Daniel Hall
Olmsted County Auditor/Treasurer

By *Luigi Gibson* Deputy

CITY APPROVAL

State of Minnesota
County of Olmsted
City of Rochester

I, Judy K. Scherr, City Clerk, in and for the City of Rochester, do hereby certify that on the 7th day of August, 1998, the accompanying plat was duly approved by the Common Council of the City of Rochester. In testimony thereof I have hereunto signed my name and affixed the seal of said City of Rochester this 7th day of August, 1998.

Judy Kay Scherr
Judy K. Scherr, City Clerk

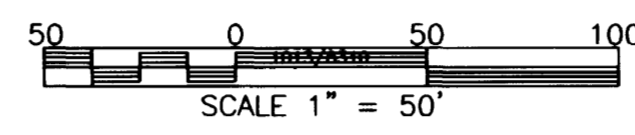
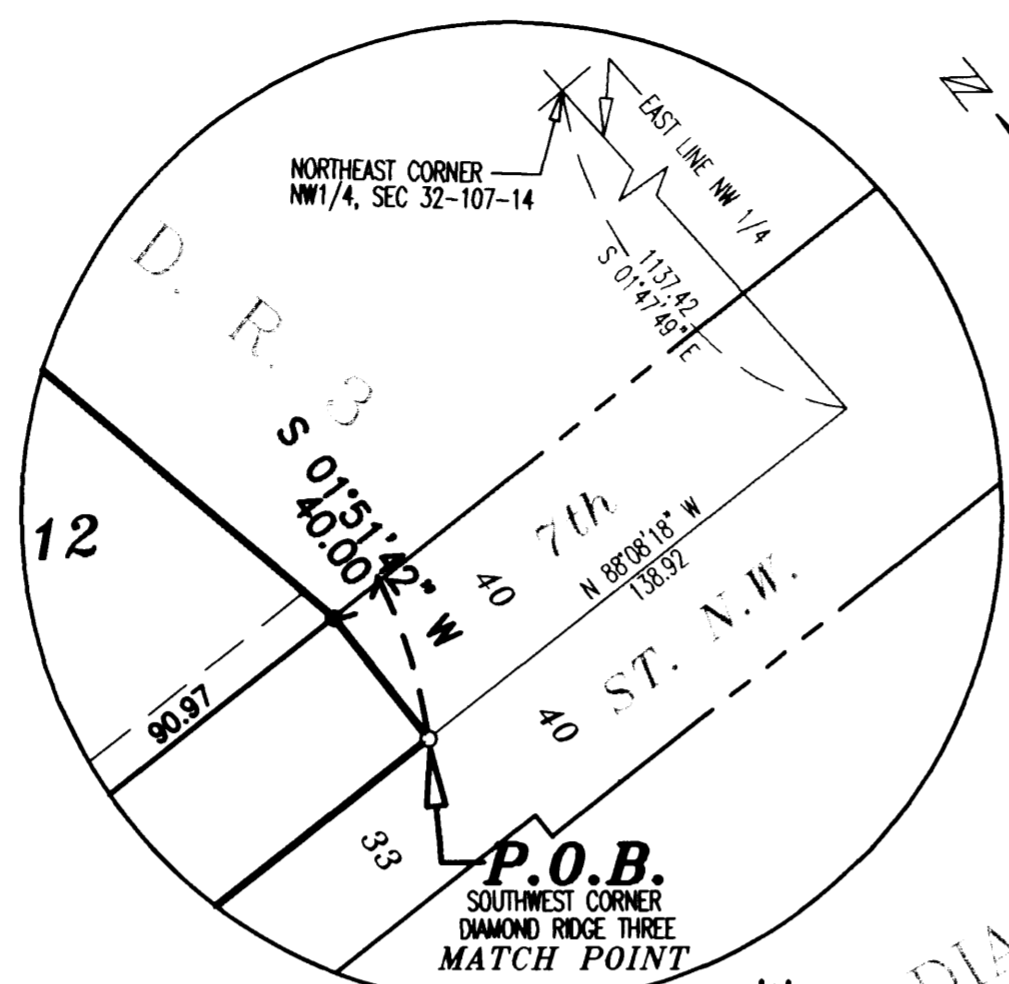
COUNTY RECORDER

DOCUMENT NUMBER 58778 806730

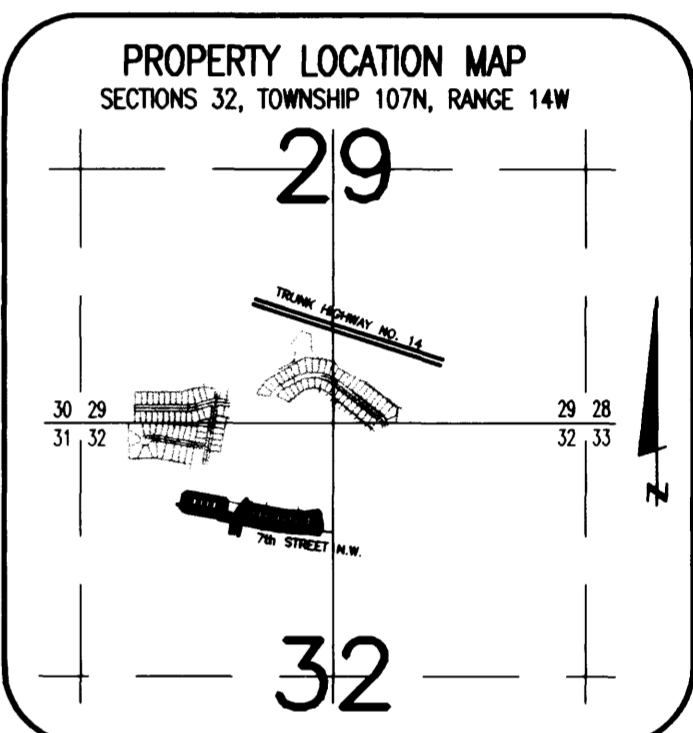
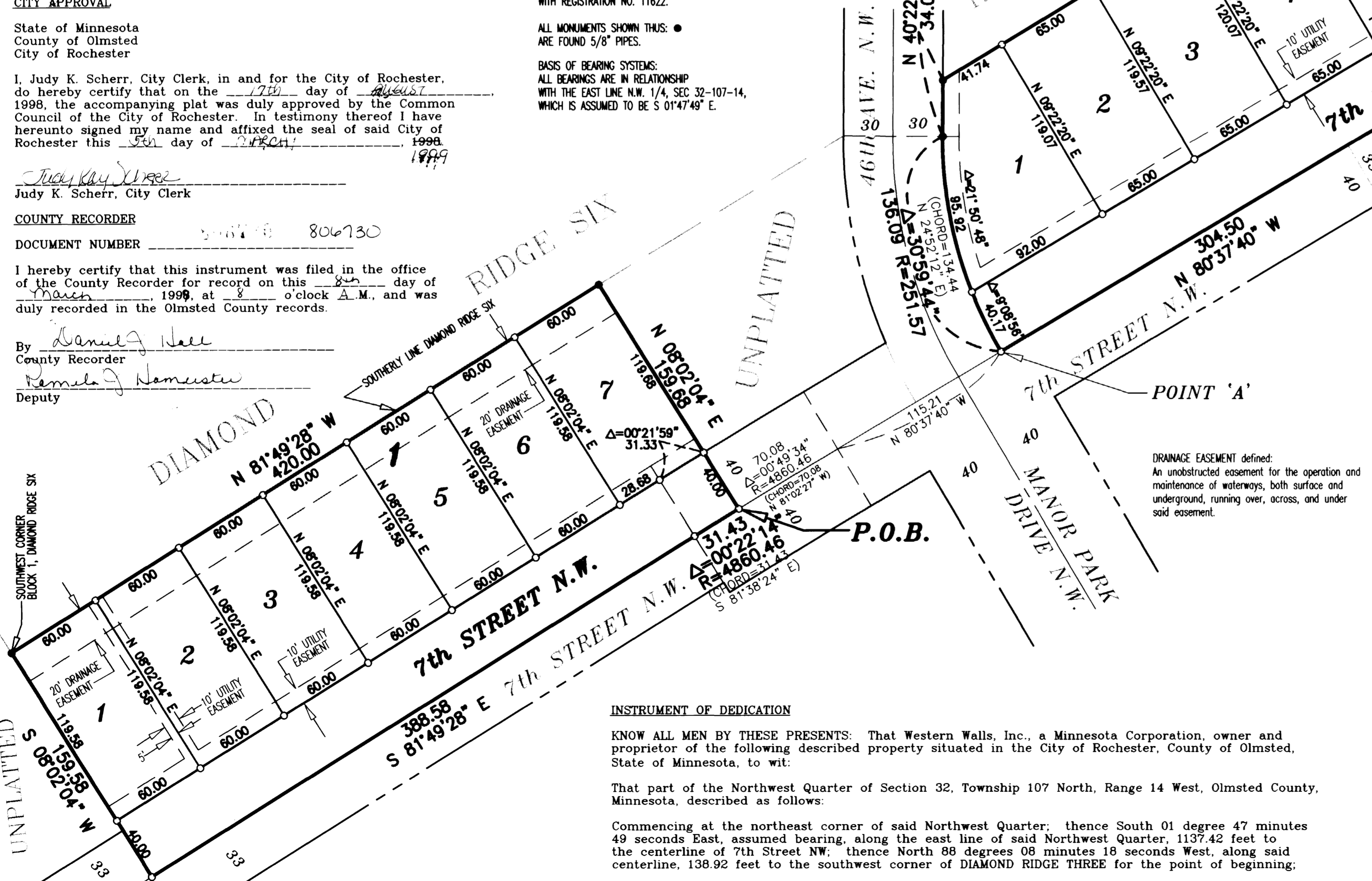
I hereby certify that this instrument was filed in the office of the County Recorder for record on this 8th day of March, 1998, at 8 o'clock A.M., and was duly recorded in the Olmsted County records.

By *Danelys Hill*
County Recorder

Remela J. Namaste
Deputy



NOTE:
ALL MONUMENTS SHOWN THUS: ○ ARE 5/8" I.D. CAPPED PIPES SET WITH REGISTRATION NO. 11622.
ALL MONUMENTS SHOWN THUS: ● ARE FOUND 5/8" PIPES.
BASIS OF BEARING SYSTEMS:
ALL BEARINGS ARE IN RELATIONSHIP WITH THE EAST LINE N.W. 1/4, SEC 32-107-14, WHICH IS ASSUMED TO BE S 01°47'49" E.



UTILITY EASEMENT defined:
An unobstructed easement for the construction and maintenance of all necessary underground or surface public utilities including rights to conduct drainage and trimming on said easement.

DRAINAGE EASEMENT defined:
An unobstructed easement for the operation and maintenance of waterways, both surface and underground, running over, across, and under said easement.

thence continue North 88 degrees 08 minutes 18 seconds West, 143.66 feet; thence westerly 393.25 feet along said centerline and along a tangential curve, concave to the north, radius of 3000.00 feet, and central angle of 07 degrees 30 minutes 38 seconds; thence North 80 degrees 37 minutes 40 seconds West, along said centerline and tangent to said curve, 304.50 feet to the easterly line of 46th Avenue NW as dedicated in DIAMOND RIDGE FOUR; (said point hereinafter referred to as Point 'A'); thence northerly 136.09 feet along said easterly line and along a nontangential curve concave southeasterly, central angle of 30 degrees 59 minutes 44 seconds, radius of 251.57 feet, and the chord of said curve bears North 24 minutes 52 minutes 12 seconds East, 134.44 feet; thence North 40 degrees 22 minutes 04 seconds East, 34.06 feet to the southerly line of DIAMOND RIDGE FIVE; thence South 81 degrees 04 minutes 08 seconds East, along said line and along the southerly line of DIAMOND RIDGE FOUR a distance of 386.53 feet; thence South 87 degrees 38 minutes 12 seconds East, 140.88 feet to the southwest corner of Lot 32, Block 2 of DIAMOND RIDGE THREE (the next 4 courses are along the southerly and westerly lines thereof); thence South 87 degrees 15 minutes 40 seconds East, 75.19 feet; thence North 80 degrees 32 minutes 39 seconds East, 135.85 feet; thence South 09 degrees 38 minutes 32 seconds East, 155.77 feet; thence South 01 degree 51 minutes 42 seconds West, 40.00 feet to the point of beginning.

ALSO:
Commencing at the above mentioned Point 'A'; thence North 80 degrees 37 minutes 40 seconds West, 115.21 feet; thence Westerly 70.08 feet along a tangential curve concave southerly, central angle of 00 degrees 49 minutes 34 seconds, radius of 4860.46 feet, and the chord of said curve bears North 81 degrees 02 minutes 27 seconds West, 70.08 feet for the point of beginning; thence North 08 degrees 02 minutes 04 seconds West, 159.68 feet to the south line of DIAMOND RIDGE SIX; thence North 81 degrees 49 minutes 28 seconds West, 420.00 feet to the southwest corner thereof; thence South 88 degrees 02 minutes 04 seconds West, 159.58 feet to the centerline of said 7th Street NW; thence South 81 degrees 49 minutes 58 seconds East along said centerline, 388.58 feet; thence easterly 31.43 feet along said centerline and along a tangential curve concave southerly, central angle of 00 degrees 22 minutes 14 seconds, radius of 4860.46 feet, and the chord of said curve bears South 81 degrees 38 minutes 24 seconds East, 31.43 feet to the point of beginning.

Containing 4.57 acres more or less.
have caused the same to be surveyed and platted as DIAMOND RIDGE FOURTEEN and do hereby dedicate to the public for the public use forever, the thoroughfare, and also grant the easements as shown on this plat for drainage and utility purposes only.

In witness whereof said Western Walls, Inc., a Minnesota Corporation, has caused these presents to be signed by its proper officer this 3rd day of November, 1998.

Charles Owen DeWitz
Charles Owen DeWitz, Vice President

State of Minnesota
County of Olmsted Dodge

The foregoing instrument was acknowledged before me this 3rd day of November, 1998, by Charles Owen DeWitz, Vice President, on behalf of the Corporation.

Beth Davis
Notary Public, Olmsted County, Minnesota
Dodge

My commission expires 1-31-2000

BETH DAVIS
NOTARY PUBLIC-MINNESOTA
MY COMMISSION EXPIRES 1-31-2000

PREPARED BY:
McGHEE & BETTS, INC.
CONSULTING ENGINEERS
PLANNERS, LAND SURVEYORS
ROCHESTER, MINNESOTA

DIAMOND RIDGE FOURTEEN