

ROCHESTER EAST CEMETERY

ROCHESTER, MINNESOTA

PLAT OF
ARCADIA

SURVEYOR'S CERTIFICATE

I hereby certify that I have surveyed and platted the property described on this plat as ARCADIA; that this plat is a correct representation of the survey; that all distances are correctly shown on the plat in feet and hundredths of a foot; that all monuments have been correctly placed in the ground as noted and that the outside boundary lines are correctly designated on the plat.

James E. Swanson
James E. Swanson, L.S.
Minnesota License No. 11622

STATE OF MINNESOTA
COUNTY OF Dodge

The surveyor's certificate was subscribed and sworn to before me, a Notary Public, this 11th day of December, 1998.

Beth Davis
Notary Public, Dodge County, Minnesota
My commission expires: 1-31-2000

KNOW ALL MEN BY THESE PRESENTS: That Rochester Cemetery Association, owner and proprietor of the following described property situated in the City of Rochester, State of Minnesota, to wit:

Part of Section 20, Township 107 North, Range 13 West.
has caused the same to be surveyed and platted as ARCADIA.

In witness whereof said Rochester Cemetery Association has caused these presents to be signed by its proper officers this 11th day of December, 1998.

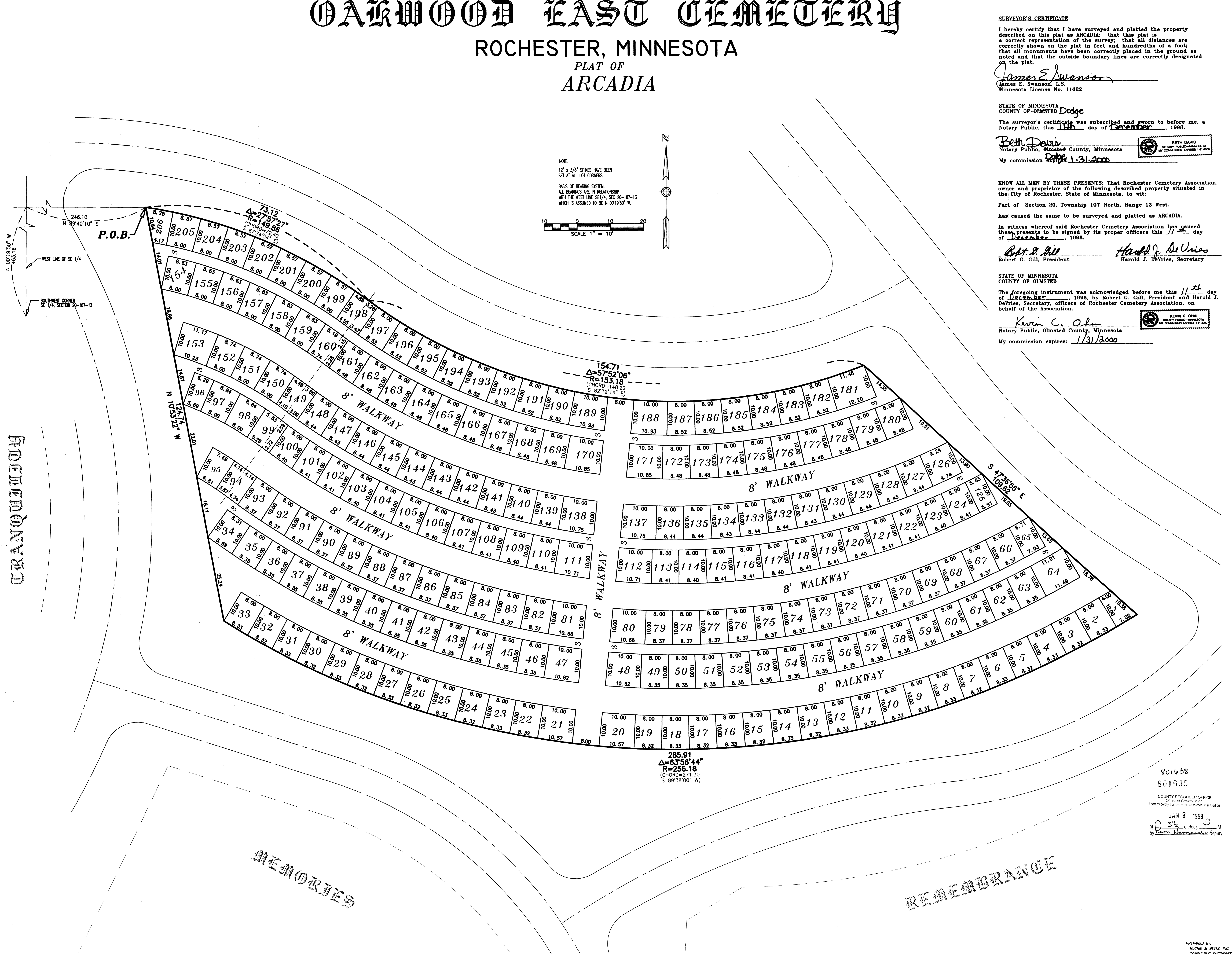
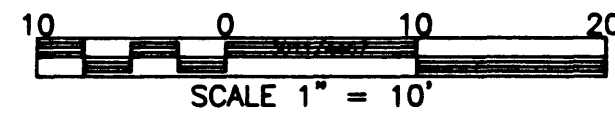
Robert G. Gill *Harold J. DeVries*
Robert G. Gill, President Harold J. DeVries, Secretary

STATE OF MINNESOTA
COUNTY OF OLMSTED

The foregoing instrument was acknowledged before me this 11th day of December, 1998, by Robert G. Gill, President and Harold J. DeVries, Secretary, officers of Rochester Cemetery Association, on behalf of the Association.

Kevin C. Olson
Notary Public, Olmsted County, Minnesota
My commission expires: 1/31/2000

NOTE:
12" x 3/8" SPIKES HAVE BEEN SET AT ALL LOT CORNERS.
BASIS OF BEARING SYSTEM:
ALL BEARINGS ARE IN RELATIONSHIP WITH THE WEST LINE SE 1/4, SEC 20-107-13 WHICH IS ASSUMED TO BE N 001°50' W.



DUFFIN ROAD

REMEMBRANCE

REMEMBRANCE

801638
801638
COUNTY RECORDER OFFICE
JAN 8 1999
at 3:30 o'clock P.M.
by *Tam Nemec* Deputy