

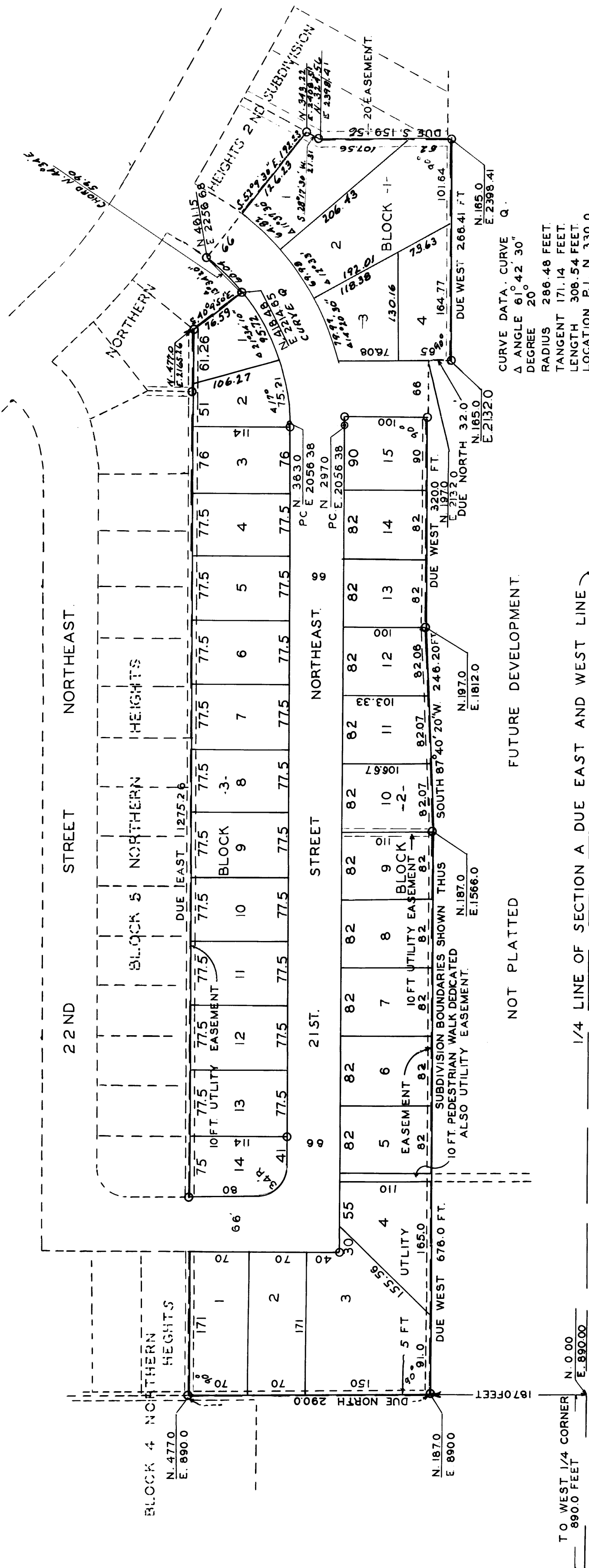
NORTHERN HEIGHTS THIRD SUBDIVISION. ROCHESTER, MINNESOTA.

BOUNDARY LINES SHOWN THUS ———
MONUMENTS SHOWN THUS ○.
MEASUREMENTS IN FEET AND DECIMALS
SCALE 1 INCH = 100 FEET
1962.

John J. Kerr
COUNTY SURVEYOR.
REGISTERED LAND SURVEYOR NO. 238.

ORIGINAL.

— SURVEYORS NOTE —
THE LOCATION OF COORDINATE 0.00 IS AT THE WEST QUARTER CORNER OF SECTION 25, THE SOUTH LINE OF THE NORTHWEST QUARTER IS ASSUMED TO BE A DUE EAST AND WEST LINE.
LOT MEASUREMENT ON CURVES ARE ARC MEASUREMENTS.



CURVE DATA: CURVE Q.
Δ ANGLE 61°42'30"
DEGREE 20'
RADIUS 288.48 FEET
TANGENT 171.14 FEET
LENGTH 308.54 FEET
LOCATION P.L.N. 330.0
E. 2227.92

ROCHESTER, MINNESOTA, DEDICATION.
KNOW ALL MEN BY THESE PRESENTS THAT NORTHERN HEIGHTS INCORPORATED, A MINNESOTA CORPORATION OWNERS AND PROPRIETORS OF THE FOLLOWING DESCRIBED LANDS SITUATE IN THE STATE OF MINNESOTA AND COUNTY OF OLMSTED TO-WIT: ASSUMING THE SOUTH LINE OF THE NORTHWEST QUARTER OF SECTION 25, TOWNSHIP 107, NORTH OF RANGE 14 WEST TO BE A DUE EAST AND WEST LINE AND COMMENCING FOR A PLACE OF BEGINNING AT A POINT WHICH IS NORTH 187.0 FEET AND EAST 890.0 FEET FROM THE SOUTHWEST CORNER OF SAID NORTHWEST QUARTER AND RUNNING THENCE DUE NORTH A DISTANCE OF 290.0 FEET, THENCE DUE EAST A DISTANCE OF 1275.26 FEET, THENCE SOUTH 40°9'50" EAST A DISTANCE OF 76.59 FEET, THENCE DEFLECT TO THE LEFT ON A CURVE RADIUS 253.48 FEET THE CHORD OF WHICH BEARS NORTH 44°34' EAST AND MEASURES 59.90 FEET, THENCE SOUTH 32°9'30" EAST A DISTANCE OF 192.23 FEET, THENCE SOUTH 28°17'30" WEST A DISTANCE OF 21.31 FEET, THENCE DUE SOUTH A DISTANCE OF 159.56 FEET, THENCE DUE WEST A DISTANCE OF 266.41 FEET, THENCE DUE NORTH A DISTANCE OF 32.0 FEET, THENCE DUE WEST A DISTANCE OF 320.00 FEET, THENCE SOUTH 87°40'20" WEST A DISTANCE OF 246.20 FEET, THENCE DUE WEST A DISTANCE OF 676.0 FEET TO THE PLACE OF BEGINNING, THAT THEY HAVE CAUSED THE SAME TO BE SURVEYED AND PLATTED AS "NORTHERN HEIGHTS THIRD SUBDIVISION" AND DO HEREBY DONATE AND DEDICATE TO THE PUBLIC FOR THE PUBLIC USE THE STREETS, AVENUES AND A PEDESTRIAN WALK AS SHOWN ON THE ANNEXED PLAT AND ALSO GRANT THE UTILITY EASEMENTS AS SHOWN ON SAID PLAT FOR THE USE OF THE MUNICIPALITY OR OTHER PUBLIC UTILITIES FOR THE INSTALLATION AND MAINTENANCE OF FACILITIES INSTALLED IN AND OVER SAID EASEMENTS TO SERVE ADJACENT OR OTHER PREMISES IN THE VICINITY. IN WITNESS WE HAVE HERE-UN-TO SET OUR HANDS AND SEALS THIS 23RD DAY OF October A.D. 1962.
IN THE PRESENCE OF

ROCHESTER
WITNESS. NORTHERN HEIGHTS INCORPORATED.
WITNESS BY ATTEST *Dennis J. Pierce* PRESIDENT.
A. J. [Signature] WITNESS BY ATTEST. SECRETARY.

CORPORATE ACKNOWLEDGEMENT.
STATE OF MINNESOTA,
COUNTY OF OLMSTED, S. S.
ON THIS 10TH DAY OF April A.D. 1962 BEFORE ME A NOTARY PUBLIC PERSONALLY APPEARED DENNIS J. PIERCE AND LLOYD ENGELSMAN TO ME PERSONALLY KNOWN, WHO BEING EACH BY ME DULY SWORN DID SAY THAT THEY ARE RESPECTIVELY THE PRESIDENT AND SECRETARY OF NORTHERN HEIGHTS INC. THAT THE SEAL AFFIXED IS THE CORPORATE SEAL OF SAID CORPORATION AND THAT SAID INSTRUMENT WAS SIGNED AND SEALED IN ITS BEHALF BY AUTHORITY OF ITS MEMBERS AND THE SAID DENNIS J. PIERCE AND LLOYD ENGELSMAN ACKNOWLEDGE SAID INSTRUMENT TO BE THE FREE ACT AND DEED OF SAID CORPORATION.
Roy E. Koschalk NOTARY PUBLIC, OLMSTED COUNTY, MINNESOTA.
MY COMMISSION EXPIRES Dec. 18 1964.

SURVEYORS CERTIFICATE.
STATE OF MINNESOTA,
COUNTY OF OLMSTED, S. S.
I, JOHN J. KERR COUNTY SURVEYOR IN AND FOR SAID COUNTY DO HEREBY CERTIFY THAT I HAVE SURVEYED AND PLATTED THE PROPERTY DESCRIBED ON THIS PLAT AS NORTHERN HEIGHTS THIRD SUBDIVISION, THAT THE PLAT IS A CORRECT REPRESENTATION OF SAID SURVEY AS MADE, THAT ALL DISTANCES ARE CORRECTLY SHOWN IN FEET AND DECIMALS OF A FOOT, THAT MONUMENTS FOR THE GUIDANCE OF FUTURE SURVEYS HAVE BEEN PLACED IN THE GROUND AS SHOWN ON SAID PLAT, THAT THE OUTSIDE BOUNDARIES ARE CORRECTLY DESIGNATED, THAT THERE ARE NO WET LANDS OR PUBLIC HIGHWAYS TO BE DESIGNATED OTHER THAN AS SHOWN.
John J. Kerr COUNTY SURVEYOR.
REGISTERED LAND SURVEYOR NO. 238.

STATE OF MINNESOTA,
COUNTY OF OLMSTED,
CITY OF ROCHESTER, S. S.
I, ELPREDA REITER CITY CLERK IN AND FOR SAID CITY OF ROCHESTER DO HEREBY CERTIFY THAT THE ACCOMPANYING PLAT WAS DULY APPROVED BY THE COMMON COUNCIL OF THE CITY OF ROCHESTER, IN TESTIMONY WHEREOF I HAVE SET MY HAND AND AFFIXED THE SEAL OF SAID CITY THIS 23 DAY OF August A.D. 1962.
Elfreda Reiter CITY CLERK.

TAXES PAID FOR THE YEAR OF 1961...
Karl H. [Signature] COUNTY TREASURER.

TAXES PAID AND TRANSFER ENTERED THIS 1st DAY OF October 1962
Grace [Signature] COUNTY AUDITOR.

STATE OF MINNESOTA,
COUNTY OF OLMSTED, S. S.
FILED FOR RECORD THIS 24TH DAY OF October A.D. 1962 AT 2:00 O'CLOCK P.M.
AND RECORDED IN BOOK OF PLATS PAGE
Harry D. [Signature] REGISTER OF DEEDS.