

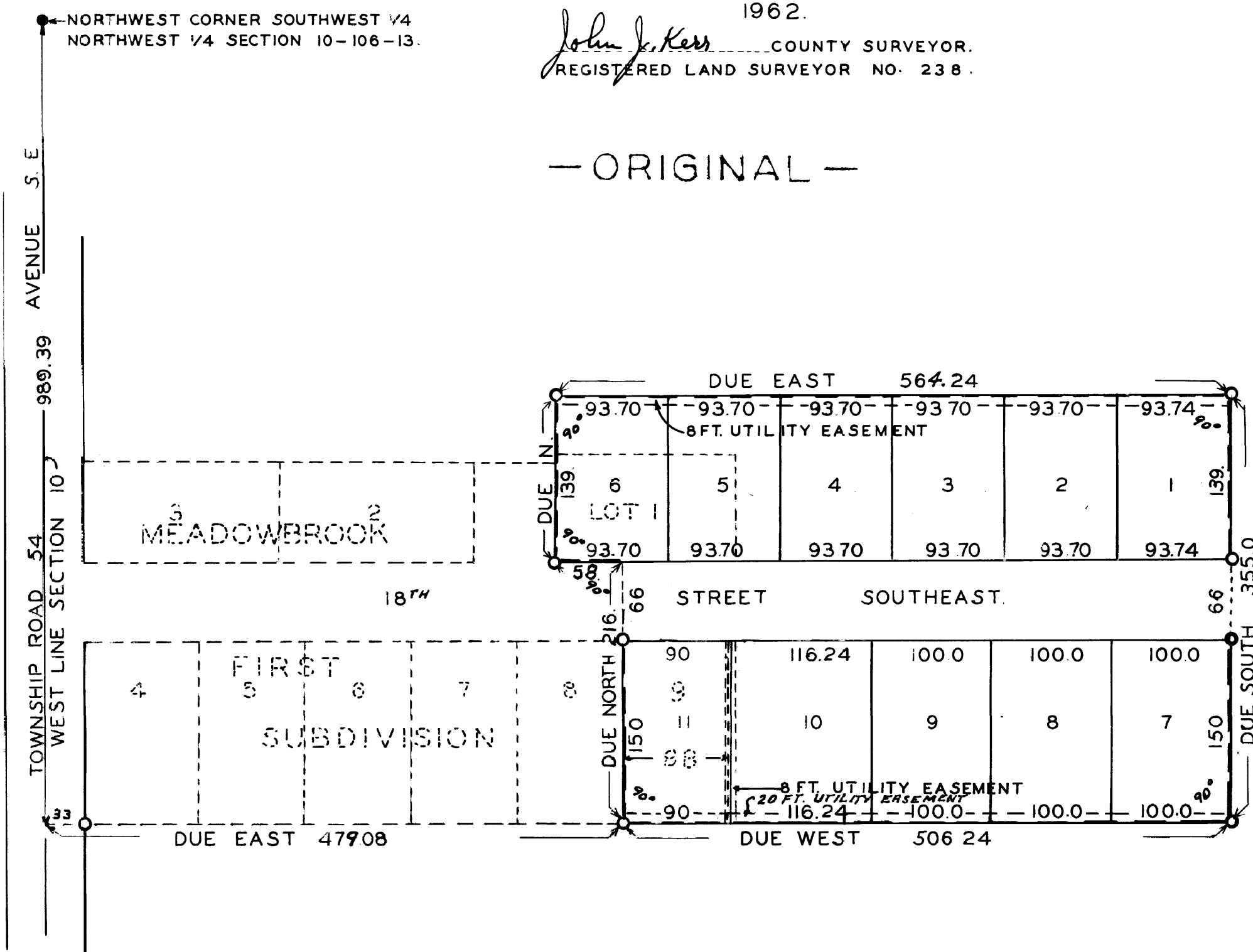
# MEADOWBROOK SECOND SUBDIVISION AND REPLAT OF LOTS 1 AND 9 MEADOWBROOK FIRST SUBDIVISION. OLMSTED COUNTY, MINNESOTA.

BOUNDARIES SHOWN THUS ———  
MONUMENTS SHOWN THUS ○  
SCALE 1 INCH = 100 FEET.

1962.

*John J. Kerr* COUNTY SURVEYOR.  
REGISTERED LAND SURVEYOR NO. 238.

— ORIGINAL —



APPROVED AS TO WATER SUPPLY AND SEWAGE DISPOSAL *April 10<sup>th</sup>* 1962.

BY *Viktor O. Wilson, M.D.* HEALTH OFFICER  
ROCHESTER OLMSTED COUNTY HEALTH UNIT.

APPROVED THIS *12* DAY OF *July* A.D. 1962, BOARD OF SUPERVISORS  
MARION TOWNSHIP, OLMSTED COUNTY, MINNESOTA. (APPROVED UNDER 1945 M.S.A.  
349-12 AND OVERRULING THE OLMSTED COUNTY PLANNING COMMISSION.)

BY *Wm O Neill* CHAIRMAN.

*Robert Schomfeld* SUPERVISOR.

*Paul Rabow* SUPERVISOR.

## DEDICATION.

KNOW ALL MEN BY THESE PRESENTS THAT ROBERT C. NEILL AND VIRGINIA F. NEILL (HIS WIFE) OWNERS AND PROPRIETORS OF THE FOLLOWING DESCRIBED LANDS SITUATE IN THE STATE OF MINNESOTA AND COUNTY OF OLMSTED TO-WIT: COMMENCING AT THE NORTHWEST CORNER OF THE SOUTHWEST QUARTER OF THE NORTHWEST QUARTER OF SECTION 10, TOWNSHIP 106, NORTH OF RANGE 13 WEST AND RUNNING THENCE SOUTH ALONG THE WEST LINE OF SAID SECTION A DISTANCE OF 989.39 FEET, THENCE EAST PARALLEL WITH THE NORTH LINE OF SAID SOUTHWEST QUARTER OF THE NORTHWEST QUARTER A DISTANCE OF 479.08 FEET FOR A PLACE OF BEGINNING, RUNNING THENCE DUE NORTH AT A RIGHT ANGLE TO THE LAST DESCRIBED COURSE A DISTANCE OF 216.0 FEET, THENCE DUE WEST A DISTANCE OF 58.0 FEET, THENCE DUE NORTH A DISTANCE OF 139.0 FEET, THENCE DUE EAST A DISTANCE OF 564.24 FEET, THENCE DUE SOUTH A DISTANCE OF 355.0 FEET, THENCE DUE WEST A DISTANCE OF 506.24 FEET TO THE PLACE OF BEGINNING, THAT THEY HAVE CAUSED THE SAME TO BE SURVEYED AND PLATTED AS "MEADOWBROOK SECOND SUBDIVISION AND REPLAT OF LOTS 1 AND 9 MEADOWBROOK FIRST SUBDIVISION", DO HEREBY DONATE AND DEDICATE TO THE PUBLIC FOR THE PUBLIC USE THE STREETS AND AVENUES AS SHOWN ON THE ANNEXED PLAT AND ALSO GRANT THE UTILITY EASEMENTS AS SHOWN ON SAID PLAT FOR THE USE OF THE MUNICIPALITY OR OTHER PUBLIC UTILITIES FOR THE INSTALLATION AND MAINTENANCE OF FACILITIES INSTALLED IN AND OVER SAID EASEMENTS TO SERVE ADJACENT OR OTHER PREMISES IN THE VICINITY, IN WITNESS WE HAVE HERE-UN-TO SET OUR HANDS AND SEALS THIS *7<sup>th</sup>* DAY OF *AUGUST* A.D. 1962.

*R. C. Neill* WITNESS.

*Robert C. Neill*  
ROBERT C. NEILL

*H. O. Simpson* WITNESS.

*Virginia F. Neill*  
VIRGINIA F. NEILL

## ACKNOWLEDGEMENT.

STATE OF MINNESOTA,  
COUNTY OF OLMSTED, S. S.  
ON THIS *7<sup>th</sup>* DAY OF *August* A.D. 1962 BEFORE ME A NOTARY PUBLIC PERSONALLY APPEARED ROBERT C. NEILL AND VIRGINIA F. NEILL (HIS WIFE) TO ME KNOWN TO BE THE PERSONS DESCRIBED IN AND WHO EXECUTED THE FOREGOING INSTRUMENT AND ACKNOWLEDGED THAT THEY EXECUTED THE SAME AS THEIR FREE ACT AND DEED.

*R. S. Raymond* NOTARY PUBLIC, OLMSTED COUNTY, MINNESOTA.  
MY COMMISSION EXPIRES *Jan. 22* 1964.

## SURVEYORS CERTIFICATE.

STATE OF MINNESOTA,  
COUNTY OF OLMSTED, S. S.  
I, JOHN J. KERR COUNTY SURVEYOR IN AND FOR SAID COUNTY DO HEREBY CERTIFY THAT I HAVE SURVEYED AND PLATTED THE PROPERTY DESCRIBED ON THIS PLAT AS "MEADOWBROOK SECOND SUBDIVISION AND REPLAT OF LOTS 1 AND 9 MEADOWBROOK FIRST SUBDIVISION", THAT THE PLAT IS A CORRECT REPRESENTATION OF SAID SURVEY AS MADE, THAT ALL DISTANCES ARE CORRECTLY SHOWN IN FEET AND DECIMALS OF A FOOT, THAT MONUMENTS FOR THE GUIDANCE OF FUTURE SURVEYS HAVE BEEN PLACED IN THE GROUND AS SHOWN ON THE PLAT, THAT THE OUTSIDE BOUNDARIES ARE CORRECTLY DESIGNATED, THAT THERE ARE NO WET LANDS OR PUBLIC HIGHWAYS TO BE DESIGNATED OTHER THAN AS SHOWN.

*John J. Kerr* COUNTY SURVEYOR.  
REGISTERED LAND SURVEYOR NO. 238.

STATE OF MINNESOTA,  
COUNTY OF OLMSTED, S. S.  
I, ROSS BROWNING COUNTY AUDITOR IN AND FOR SAID COUNTY DO HEREBY CERTIFY THAT THE ATTACHED PLAT WAS DULY APPROVED BY THE BOARD OF COUNTY COMMISSIONERS AT A MEETING HELD ON THIS *8<sup>th</sup>* DAY OF *August* A.D. 1962, IN TESTIMONY WHEREOF I HAVE SIGNED MY NAME AND AFFIXED THE SEAL OF SAID COUNTY THIS *9<sup>th</sup>* DAY OF *August* A.D. 1962.

*Ross Browning* COUNTY AUDITOR.

TAXES PAID FOR THE YEAR OF 1961..

*Karl H. Pustier* COUNTY TREASURER.  
*Edwin Markburger* deputy

TAXES PAID AND TRANSFER ENTERED THIS *2<sup>nd</sup>* DAY OF *August* A.D. 1962.

*Ross Browning* COUNTY AUDITOR.

STATE OF MINNESOTA,  
COUNTY OF OLMSTED, S. S.  
FILED FOR RECORD THIS *2<sup>nd</sup>* DAY OF *August* A.D. 1962 AT *12* O'CLOCK *P.* M.  
AND RECORDED IN BOOK OF PLATS PAGE *26845*

*Henry W. Adams* REGISTER OF DEEDS.