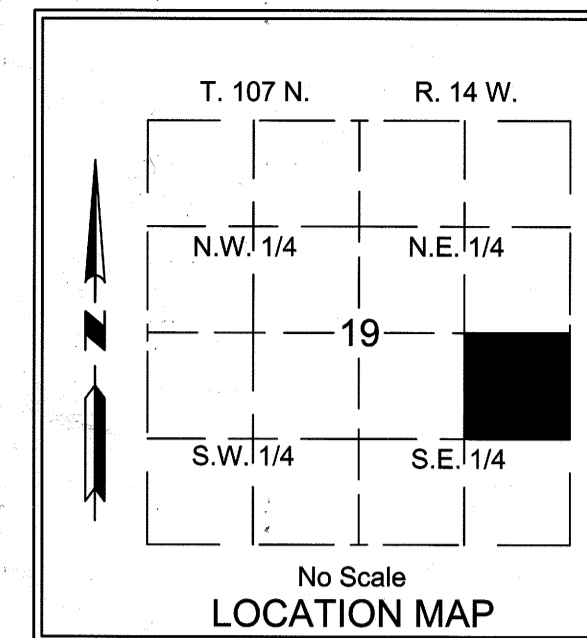
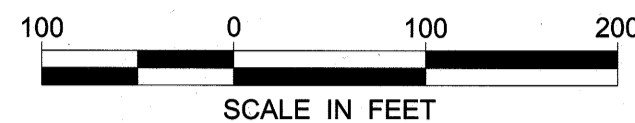


VALLEYHIGH BUSINESS PARK



ORIENTATION OF THIS BEARING SYSTEM IS BASED ON THE OLMSTED COUNTY COORDINATE SYSTEM NAD 83 - (1996 ADJ.) WHEREIN THE EAST LINE OF THE SE 1/4 OF SEC. 19, T.107N, R.14W. BEARS S 00°16'34" E.



LEGEND

- DENOTES 3/4 INCH BY 18 INCH IRON PIPE SET AND MARKED BY LICENSE NO. 47034
- DENOTES FOUND IRON MONUMENT UNLESS NOTED OTHERWISE

UTILITY EASEMENT DEFINED

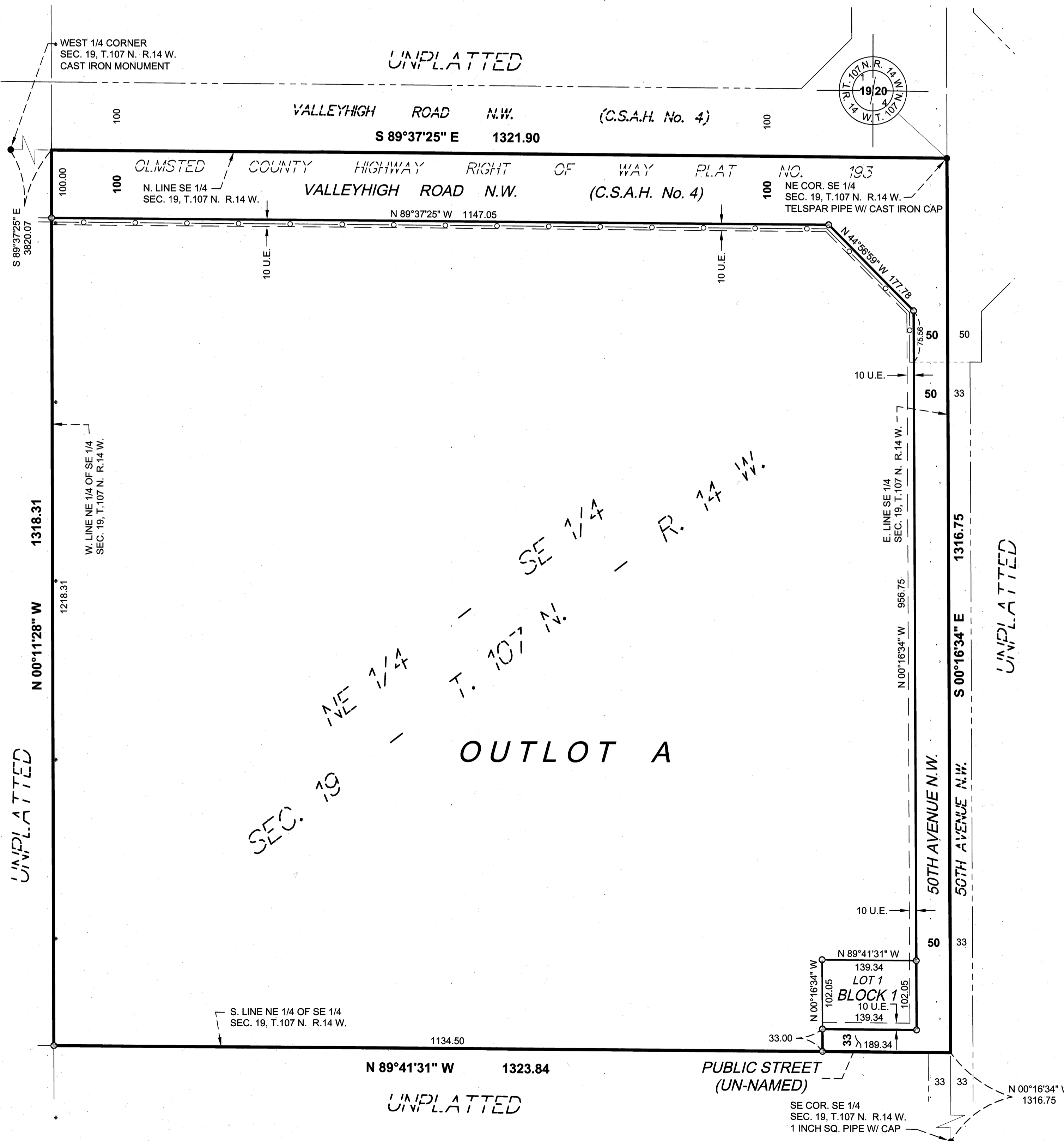
AN UNOBSTRUCTED EASEMENT FOR THE CONSTRUCTION AND MAINTENANCE OF ALL NECESSARY OVERHEAD, UNDERGROUND OR SURFACE PUBLIC UTILITIES, INCLUDING RIGHTS TO CONDUCT DRAINAGE AND TRIMMING ON SAID EASEMENT.

U.E. = UTILITY EASEMENT

CONTROLLED ACCESS DEFINED

INGRESS AND EGRESS TO, FROM OR ACROSS THE ABUTTING ROADWAY IS RESTRICTED BY THE ROAD AUTHORITY PURSUANT TO MINNESOTA STATE STATUTE 160.08.

○ DENOTES CONTROLLED ACCESS



INSTRUMENT OF DEDICATION

KNOW ALL PERSONS BY THESE PRESENTS: That Valleyhigh Business Park, LLC, a Minnesota limited liability company, owner and mortgagor, and Bank of Alma, a Wisconsin business corporation, mortgagee of the following described property:

The Northeast Quarter of the Southeast Quarter of Section 19, Township 107 North, Range 14 West, City of Rochester, Olmsted County, Minnesota.

Said tract contains 40.01 acres, more or less.

Have caused the same to be surveyed and platted as VALLEYHIGH BUSINESS PARK and do hereby dedicate to the public for public use forever, the public ways, and also hereby dedicate the easements as shown on this plat for drainage and utility purposes only.

In witness whereof said Valleyhigh Business Park, LLC, a Minnesota limited liability company, has caused these presents to be signed by its proper officer this 24 day of May, 2019.

Valleyhigh Business Park, LLC
J.M. Hamilton
J.M. Hamilton
Chief Manager

STATE OF MINNESOTA
COUNTY OF OLMSTED

The foregoing instrument was acknowledged before me this 24 day of May, 2019, by J.M. Hamilton, Chief Manager of Valleyhigh Business Park, LLC, a Minnesota limited liability company, on behalf of the company.

RAE JEANNE DILPURA
Notary printed name
Notary Public, Olmsted County, Minnesota
My Commission Expires 1/31/2024

In witness whereof said Bank of Alma, a Wisconsin business corporation, has caused these presents to be signed by its proper officer this 20 day of May, 2019.

Bank of Alma
William H. Bosshard
William H. Bosshard
President

STATE OF WISCONSIN
COUNTY OF BUFFALO

The foregoing instrument was acknowledged before me this 30th day of May, 2019, by William H. Bosshard, President of Bank of Alma, a Wisconsin business corporation, on behalf of the corporation.

Lynn M Reinhardt
Notary printed name
Notary Public, Buffalo County, Wisconsin
My Commission Expires 1/1/2023

CITY APPROVAL

STATE OF MINNESOTA
COUNTY OF OLMSTED
CITY OF ROCHESTER

I, Anissa Hollingshead, City Clerk in and for the City of Rochester, do hereby certify that on the 6th day of May, 2019, the accompanying plat was duly approved by the Common Council of the City of Rochester. In testimony whereof, I have hereunto signed my name and affixed the Seal of said City of Rochester this 5th day of May, 2019.

Anissa Hollingshead
Anissa Hollingshead
City Clerk
City of Rochester

COUNTY SURVEYOR

I certify that in accordance with Minnesota Statutes, Section 505.021, Subd. 11, this plat has been reviewed and approved this 23 day of May, 2019.

Mark E. Newton
Mark E. Newton
Olmsted County Surveyor

SURVEYOR'S CERTIFICATE

I, Mark J. Haselius, do hereby certify that this plat was prepared by me or under my direct supervision; that I am a duly Licensed Land Surveyor in the State of Minnesota; that this plat is a correct representation of the boundary survey; that all mathematical data and labels are correctly designated on this plat; that all monuments depicted on this plat have been, or will be correctly set within one year; that all water boundaries and wet lands, as defined in Minnesota Statutes, Section 505.01, Subd. 3, as of the date of this certificate are shown and labeled on this plat; and all public ways are shown and labeled on this plat.

Dated this 22 day of May, 2019.

Mark J. Haselius
Mark J. Haselius,
Licensed Land Surveyor
Minnesota License No. 47034

STATE OF MINNESOTA
COUNTY OF OLMSTED

This instrument was acknowledged before me this 22 day of May, 2019 by Mark J. Haselius.

Mandy Deltjen
Notary printed name
Notary Public, Olmsted County, MN
My Commission Expires 1-31-22

PROPERTY RECORDS AND LICENSING

Taxes payable in the year 2019 on the land herein described have been paid, there are no delinquent taxes and transfer has been entered this 7th day of JUNE, 2019, at 12:15 o'clock P.m. and was duly recorded in Olmsted County Records.

Document Number A1473427

I hereby certify that this instrument was filed in the Office of Property Records and Licensing for the record on this 7th day of JUNE, 2019, at 12:15 o'clock P.m. and was duly recorded in Olmsted County Records.

W. Mark Krupaka
W. Mark Krupaka
Olmsted County Director of Property
Records and Licensing

By *Wendy von Wald*
Wendy von Wald
Deputy



1465A

Mark Haselius P:\UZ\VALHIGH\150551\9--survey\92-CAD\15-dwg\VA_150551_F-PLAT01.dwg Tuesday, May 21, 2019