

# NORTHWEST COMMERCIAL CENTER FIFTH

KNOW ALL PERSONS BY THESE PRESENTS: That Northwest Investments of La Crosse, LLC, a Wisconsin limited liability company, owner of the following described property:

Outlot F, NORTHWEST COMMERCIAL CENTER, in the City of Rochester, Olmsted County, Minnesota.

Containing 18.32 acres, more or less.

Has caused the same to be surveyed and platted as NORTHWEST COMMERCIAL CENTER FIFTH and does hereby dedicate to the public for public use the utility easements as created by this plat.

In witness whereof, said Northwest Investments of La Crosse, LLC, a Wisconsin limited liability company, has caused these presents to be signed by its proper officer this 12 day of September, 2018.

SIGNED: Northwest Investments of La Crosse, LLC

Stephanie M. Loftsgard  
Stephanie M. Loftsgard, Assistant Secretary

STATE OF MINNESOTA  
COUNTY OF OLMSTED

This instrument was acknowledged before me on September 12, 2018 by Stephanie M. Loftsgard, Assistant Secretary of Northwest Investments of La Crosse, LLC, a Wisconsin limited liability company.

Lynn A. Goldmacher  
Notary Public, Olmsted County, Minnesota

Lynn A. Goldmacher  
Notary Printed Name

My commission expires January 31, 2023

### SURVEYOR'S CERTIFICATE

I Jeffrey J. Rolfsen do hereby certify that this plat was prepared by me or under my direct supervision; that I am a duly Licensed Land Surveyor in the State of Minnesota; that this plat is a correct representation of the boundary survey; that all mathematical data and labels are correctly designated on this plat; that all monuments depicted on this plat have been, or will be correctly set within one year; that all water boundaries and wet lands, as defined in Minnesota Statutes, Section 505.01, Subd. 3, as of the date of this certificate are shown and labeled on this plat; and all public ways are shown and labeled on this plat.

Dated this 12th day of SEPTEMBER, 2018.

Jeffrey J. Rolfsen  
Jeffrey J. Rolfsen, Professional Surveyor  
Minnesota License No. 49003

STATE OF MINNESOTA  
COUNTY OF OLMSTED

This instrument was acknowledged before me on September 12, 2018 by Jeffrey J. Rolfsen.

Lynn A. Goldmacher  
Notary Public, Olmsted County, Minnesota

Lynn A. Goldmacher  
Notary Printed Name

My commission expires January 31, 2023

### OLMSTED COUNTY SURVEYOR

I hereby certify that in accordance with Minnesota Statutes, Section 505.021, Subd. 11, this plat has been reviewed and approved this 13 day of SEPTEMBER, 2018.

Mark E. Severson  
Olmsted County Surveyor

### CITY APPROVAL

STATE OF MINNESOTA  
COUNTY OF OLMSTED  
CITY OF ROCHESTER

I, Anissa Hollingshead, City Clerk, in and for the City of Rochester, do hereby certify that on the 18 day of July, 2016, the accompanying plat was duly approved by the Common Council of the City of Rochester. In testimony whereof, I have hereunto signed my name and affixed the seal of said City of Rochester this 18 day of September, 2018.

Anissa Hollingshead  
Anissa Hollingshead, City Clerk

### PROPERTY RECORDS AND LICENSING

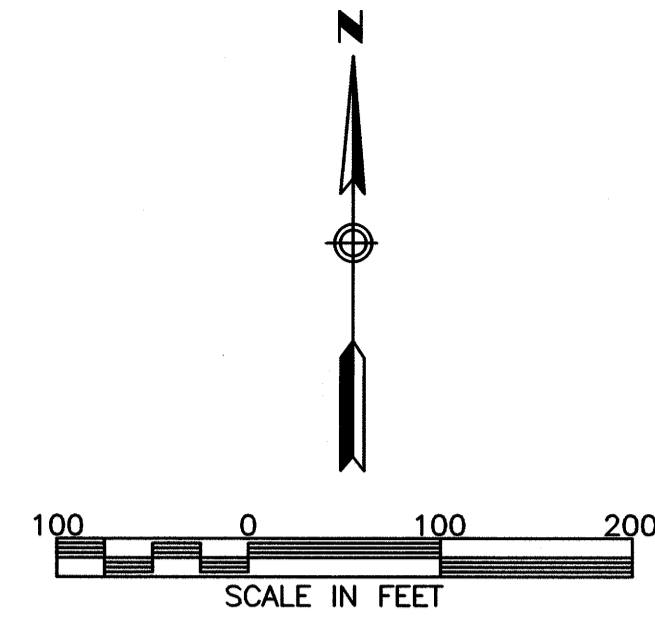
Taxes payable in the year 2018 on the land described herein have been paid, there are no delinquent taxes and transfer has been entered this 26th day of September, 2018.

DOCUMENT NUMBER A1458707

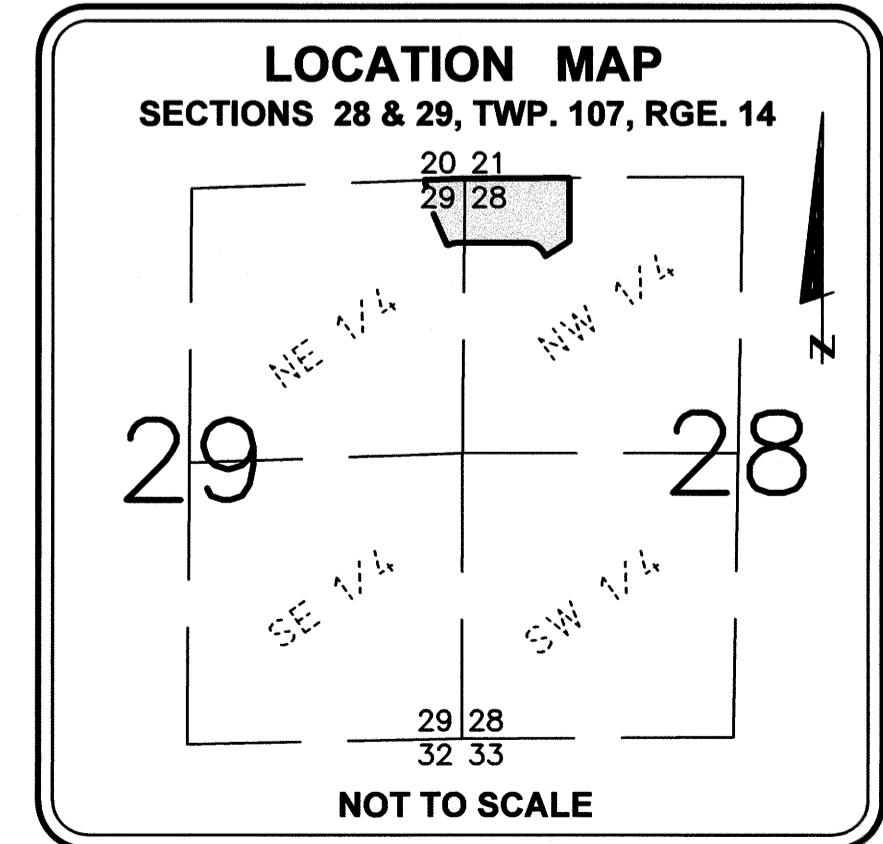
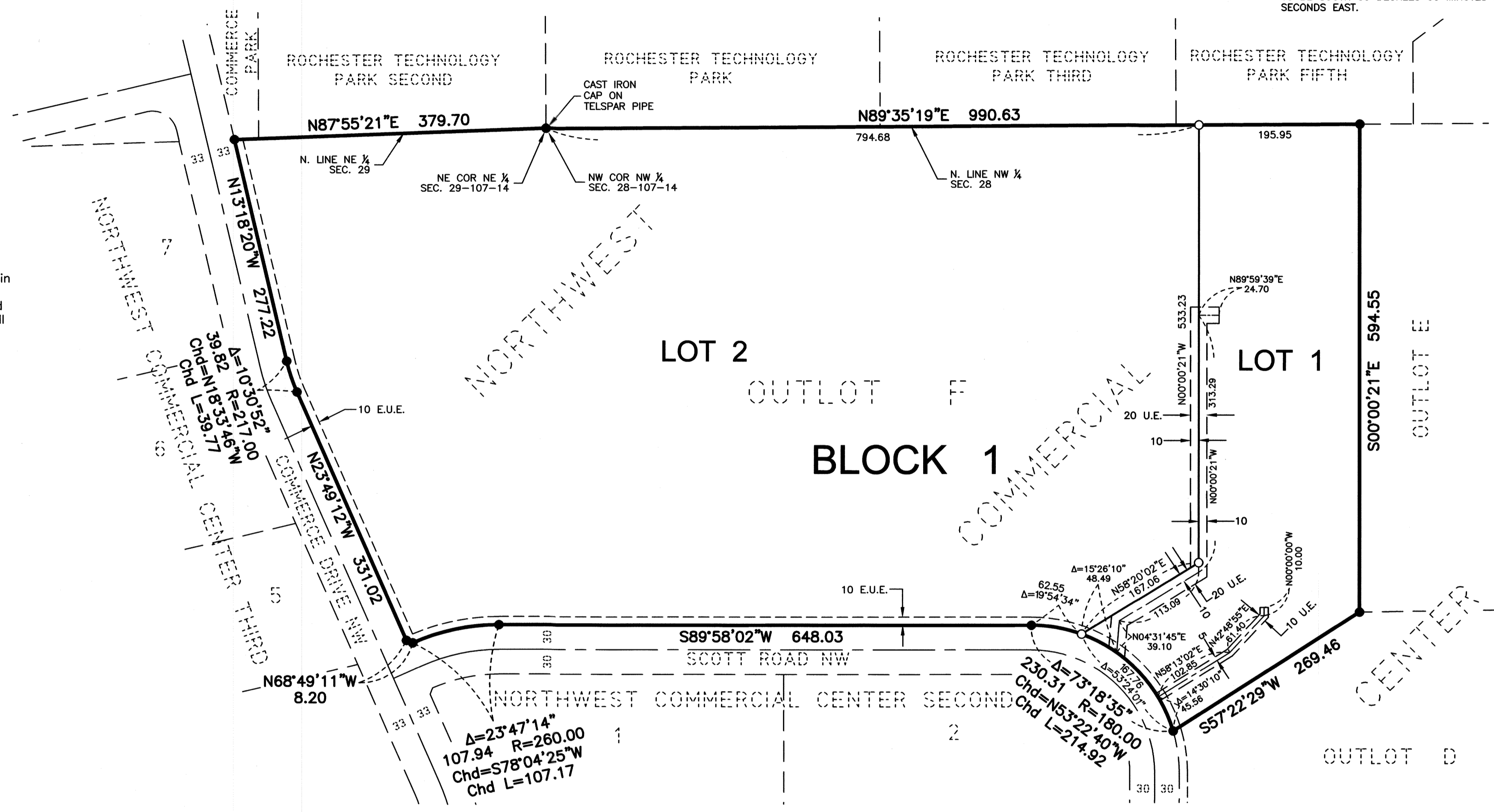
I hereby certify that this instrument was filed in the Office of Property Records and Licensing for the record on this 26th day of September, 2018, at 4 o'clock P.M., and was duly recorded in the Olmsted County records.

W. Mark Krupski  
Director of Property Records & Licensing

Wendy von Wald  
Deputy



BASIS OF BEARING SYSTEM: ALL BEARINGS ARE IN RELATIONSHIP WITH THE EAST LINE OF OUTLOT F, NORTHWEST COMMERCIAL CENTER, ROCHESTER, MINNESOTA, WHICH IS ASSUMED TO BE SOUTH 00 DEGREES 00 MINUTES 21 SECONDS EAST.



NOTE:  
ALL MONUMENTS SHOWN THUS: ○ ARE SET 5/8" I.D. CAPPED PIPES WITH LICENSE NO. 49003 WHICH WILL BE SET WITHIN 1 YEAR AFTER RECORDING OF THIS PLAT.  
ALL MONUMENTS SHOWN THUS: ● ARE FOUND 5/8" PIPES UNLESS OTHERWISE NOTED.  
U.E. = UTILITY EASEMENT  
E.U.E. = EXISTING UTILITY EASEMENT  
UTILITY EASEMENT DEFINED:  
AN UNOBSTRUCTED EASEMENT FOR THE CONSTRUCTION AND MAINTENANCE OF ALL NECESSARY UNDERGROUND OR SURFACE PUBLIC UTILITIES, INCLUDING RIGHTS TO CONDUCT DRAINAGE AND TRIMMING ON SAID EASEMENT.

3701 40th Avenue NW  
Rochester, MN 55901  
507-218-3745  
www.ws beng.com

1445A