

# ROCHESTER MARKETPLACE FIRST ADDITION

KNOW ALL PERSONS BY THESE PRESENTS: That Target Corporation, a Minnesota corporation, fee owner of the following described property situated in the County of Olmsted, State of Minnesota to wit:

Lot 7, Block 1, ROCHESTER MARKETPLACE, according to the recorded plat thereof, and situated in Olmsted County, Minnesota. Containing 17.88 acres, more or less.

Has caused the same to be surveyed and platted as ROCHESTER MARKETPLACE FIRST ADDITION and does hereby dedicate to the public for public use the utility easements as created by this plat.

In witness whereof said Target Corporation, a Minnesota corporation, has caused these presents to be signed by its proper officer this 27 day of JUNE, 2018.

Target Corporation  
*Laurie Mahowald*  
Laurie Mahowald  
Vice President  
STATE OF MINNESOTA  
COUNTY OF HENNEPIN

This instrument was acknowledged before me on this 27 day of JUNE, 2018, by Laurie Mahowald of Target Corporation, a Minnesota corporation on behalf of the corporation.

*Lisa Inwells*  
Lisa Inwells  
Notary Public, Anoka County, Minnesota  
My commission expires 01/31/2023



I, Christopher A. Terwedo do hereby certify that this plat was prepared by me or under my direct supervision; that I am a duly Licensed Land Surveyor in the State of Minnesota; that this plat is a correct representation of the boundary survey; that all mathematical data and labels are correctly designated on this plat; that all monuments depicted on the plat have been correctly set as indicated on the plat; that all water boundaries and wet lands, as defined in Minnesota Statutes, Section 505.01, Subd. 3, as of the date of this certificate are shown and labeled on the plat; and that all public ways are shown and labeled on the plat.

Dated this 25 day of JUNE, 2018.

*Christopher A. Terwedo*  
Christopher A. Terwedo, Licensed Land Surveyor  
Minnesota License No. 53536

STATE OF MINNESOTA  
COUNTY OF HENNEPIN

This instrument was acknowledged before me this 25 day of JUNE, 2018, by Christopher A. Terwedo, Licensed Land Surveyor.

*Nicholas C. Perrous*  
Nicholas C. Perrous  
Notary Public, Ramsey County, Minnesota  
My Commission Expires January 31, 2021

CITY APPROVAL  
STATE OF MINNESOTA  
COUNTY OF OLMTSTED  
CITY OF ROCHESTER

I, Anissa Hollingshead, City Clerk, in and for the City of Rochester, do hereby certify that on the 7 day of May, 2018, the accompanying plat was duly approved by the Common Council of the City of Rochester. In testimony thereof, I have hereunto signed my name and affixed the seal of said City of Rochester this 11 day of July, 2018.

Anissa Hollingshead, City Clerk of Rochester, Minnesota

COUNTY SURVEYOR  
Olmsted County, Minnesota

I hereby certify that in accordance with Minnesota Statutes, Section 505.021, Subd. 11, this plat has been reviewed and approved this 2 day of JULY, 2018.

Mark E. Severson, Olmsted County Surveyor

PROPERTY RECORDS AND LICENSING  
Olmsted County, Minnesota

Taxes payable in the year 2018 on the land described herein have been paid, there are no delinquent taxes and transfer has been entered this 16th day of July, 2018.

DOCUMENT NUMBER A1453404

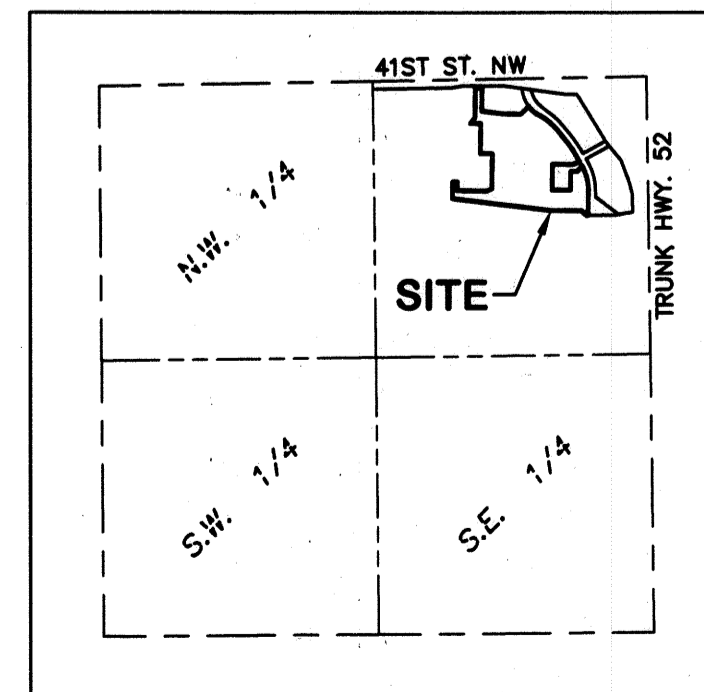
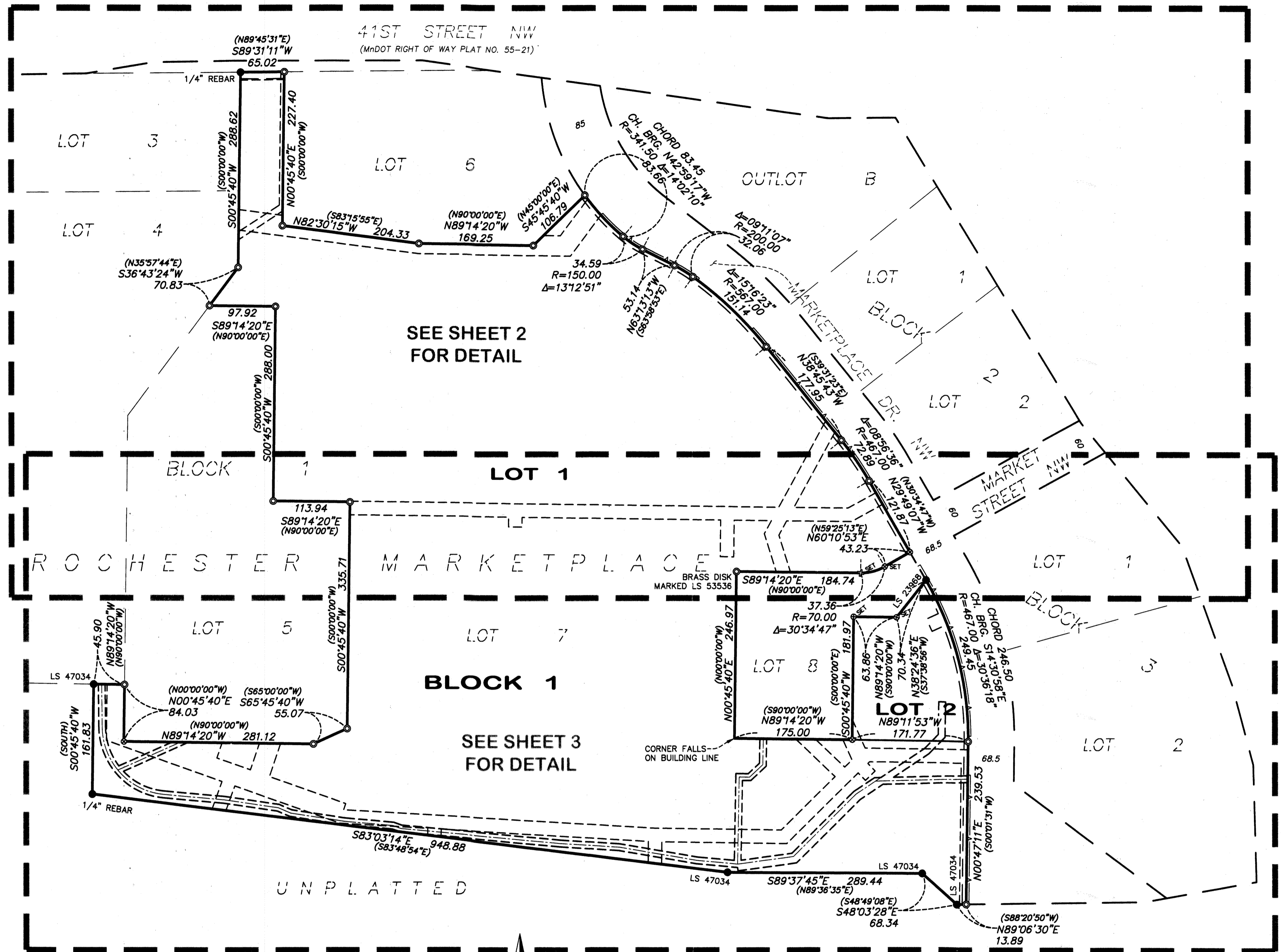
I hereby certify that this instrument was filed in the Office of Property Records and Licensing for the record on this 16th day of July, 2018, at 1 o'clock P. M. and was duly recorded in the Olmsted County Records.

Mark Krupski, Director of Property Records and Licensing

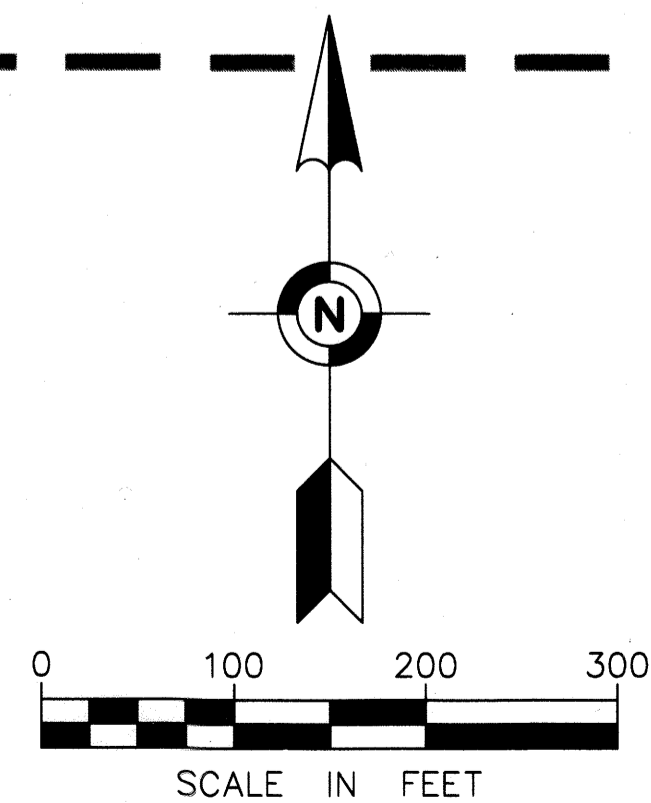
Wendy von Wald, Deputy

*W. Mark Krupski*

*Wendy von Wald*



SEC. 21, TWP. 107 N, RGE. 14 W  
VICINITY MAP  
NOT TO SCALE



The orientation of this bearing system is based on the Olmsted County coordinate system (NAD 83-2011 Adjustment).

LEGEND:

- FOUND 1/2-INCH IRON PIPE UNLESS OTHERWISE NOTED
- FOUND PK NAIL
- SET X IN CONCRETE
- SET ○ SET PK NAIL & DISC MARKED W/ LICENSE NO. 53536
- SET 1/2-INCH X 14-INCH IRON PIPE MARKED W/ LICENSE NO. 53536 UNLESS OTHERWISE NOTED
- △ ACCESS CONTROL
- REFERS TO DIMENSIONS AS SHOWN ON THE PLAT OF ROCHESTER MARKETPLACE, OLMTSTED COUNTY, MN

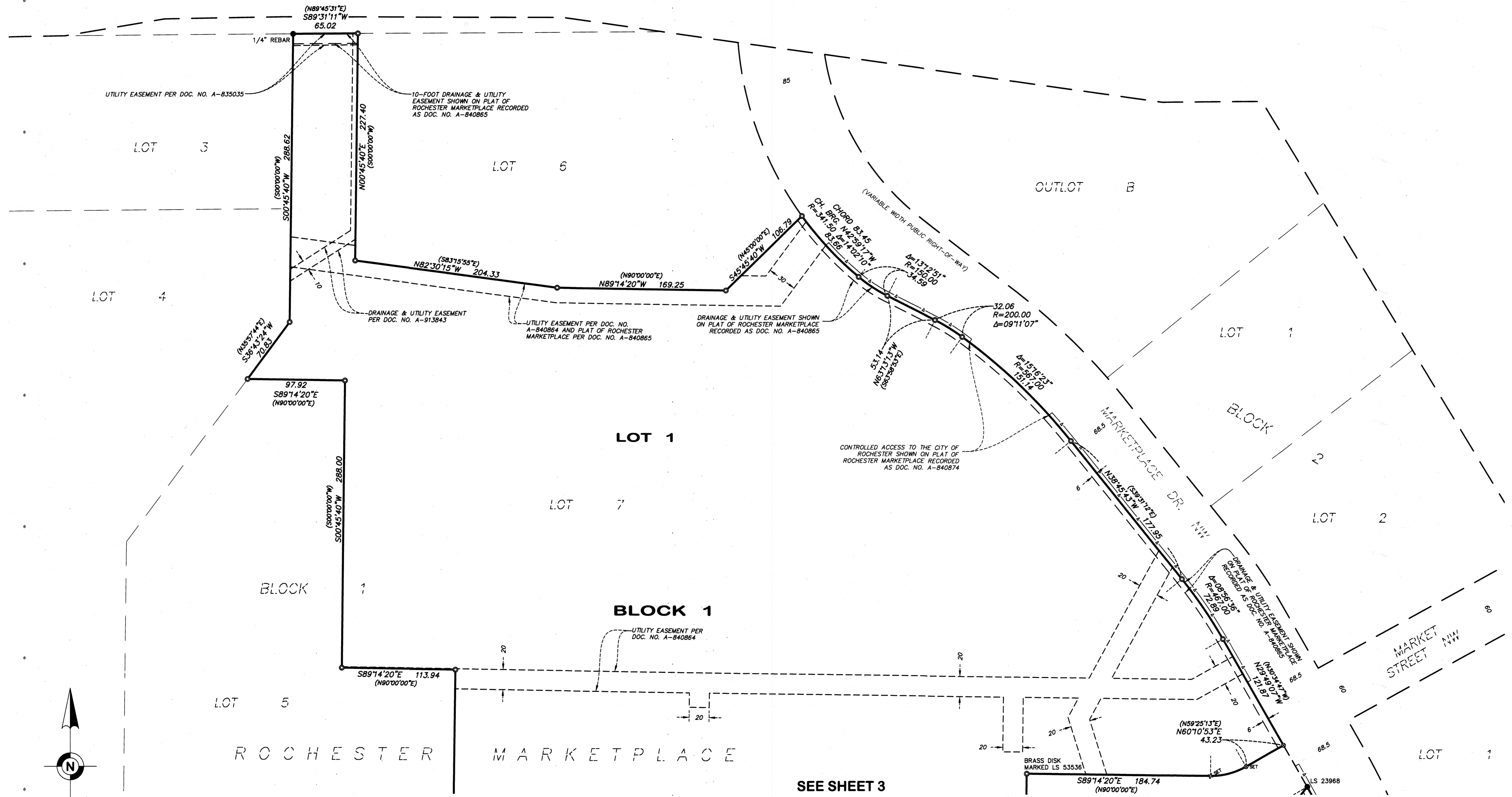


Egan, Field & Nowak, Inc.  
land surveyors since 1872

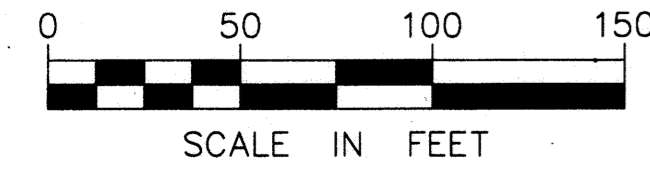
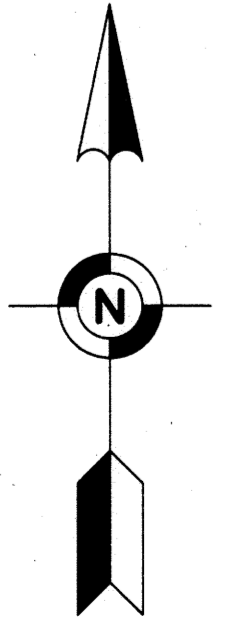
1437A

# ROCHESTER MARKETPLACE FIRST ADDITION

41ST STREET NW  
(MnDOT RIGHT OF WAY PLAT NO. 55-21)



SEE SHEET 3

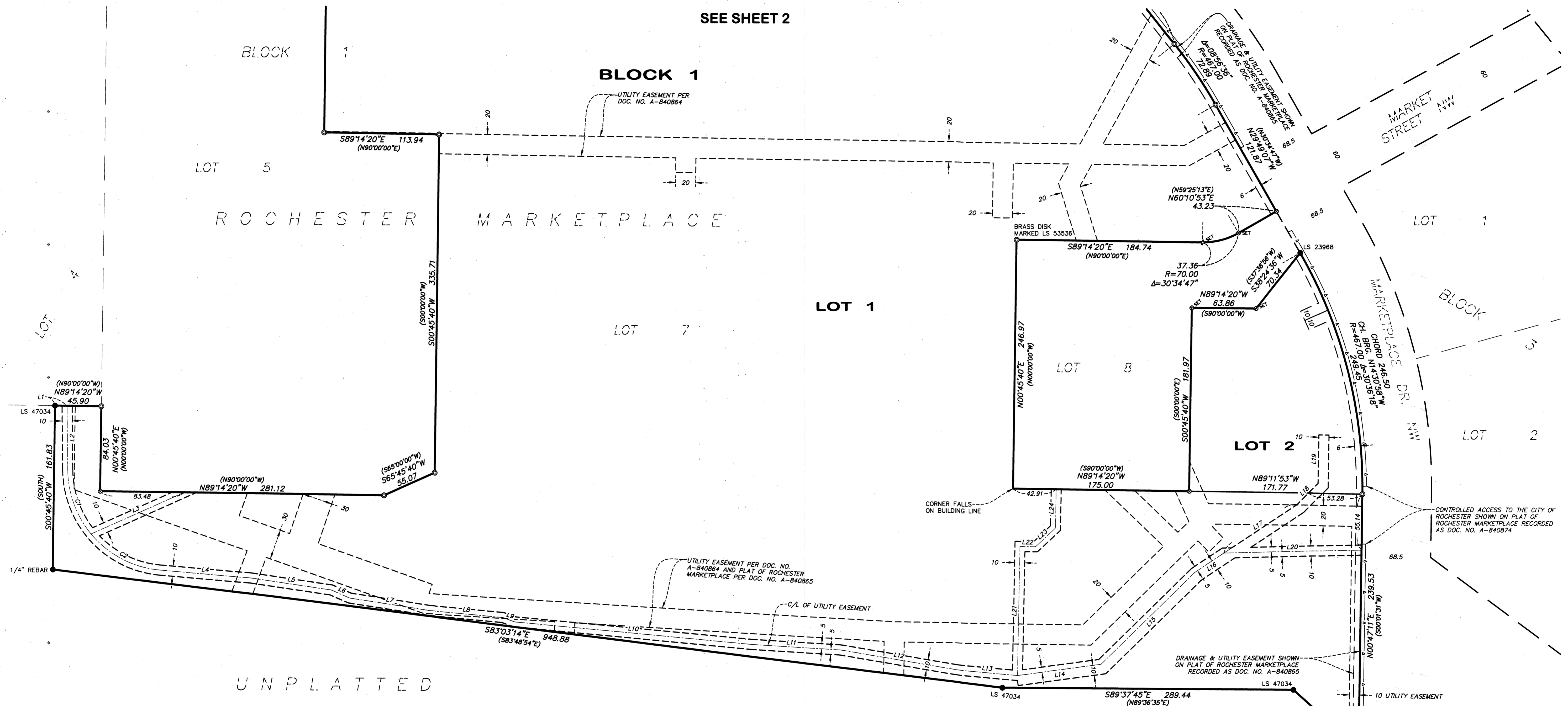


- LEGEND:**
- FOUND 1/2-INCH IRON PIPE UNLESS OTHERWISE NOTED
  - FOUND PK NAIL
  - SET X SET "X" IN CONCRETE
  - SET PK NAIL & DISC MARKED W/ LICENSE NO. 53536
  - SET 1/2-INCH X 1/4-INCH IRON PIPE MARKED W/ LICENSE NO. 53536 UNLESS OTHERWISE NOTED
  - △ ACCESS CONTROL
  - (N00°00'00"W) REFERS TO DIMENSIONS AS SHOWN ON THE PLAT OF ROCHESTER MARKETPLACE, OLMS TED COUNTY, MN



# ROCHESTER MARKETPLACE FIRST ADDITION

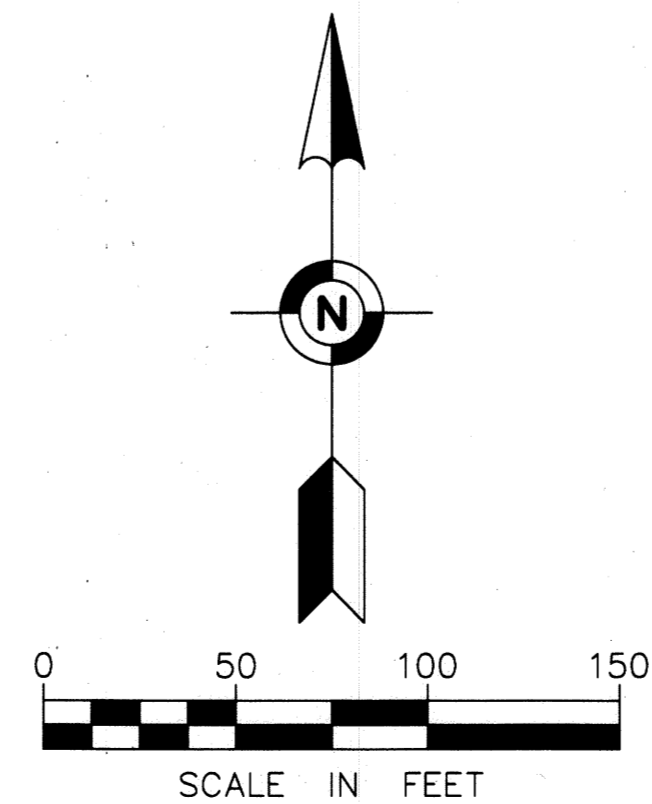
SEE SHEET 2



UNPLATTED

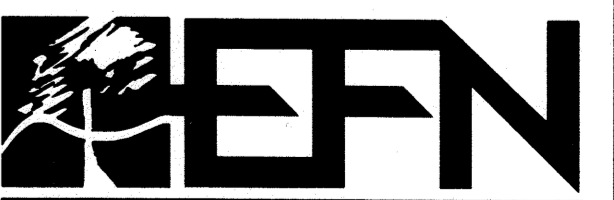
LINE & CURVE TABLE					
LINE/CURVE #	LENGTH	DIRECTION/DELTA	RADIUS	CHORD LENGTH	CHORD BEARING
C1	68.45	39°13'18"	100.00	67.13	S20°14'35"E
Q2	78.72	45°06'14"	100.00	76.70	S62°24'21"E
L1	11.94	S89°14'20"E			
L2	63.62	S00°37'56"E			
L3	101.07	N66°03'38"E			
L4	90.00	S84°57'28"E			
L5	80.89	S81°44'16"E			
L6	20.12	S66°43'35"E			
L7	79.84	S81°21'43"E			
L8	73.36	S84°52'24"E			
L9	12.50	S70°10'55"E			
L10	235.77	S84°45'41"E			
L11	88.84	S86°27'44"E			

LINE & CURVE TABLE					
LINE/CURVE #	LENGTH	DIRECTION/DELTA	RADIUS	CHORD LENGTH	CHORD BEARING
L12	116.52	S80°25'15"E			
L13	60.92	S84°50'19"E			
L14	83.88	N82°16'36"E			
L15	130.11	N45°36'11"E			
L16	34.83	N56°36'47"E			
L17	87.28	N56°36'47"E			
L18	29.16	N44°26'35"E			
L19	48.19	N00°55'22"E			
L20	136.51	N88°33'27"E			
L21	127.84	N01°08'46"E			
L22	15.41	S89°13'48"E			
L23	27.06	N47°17'56"E			
L24	38.25	N01°03'14"E			



**LEGEND:**

- FOUND 1/2-INCH IRON PIPE UNLESS OTHERWISE NOTED
- ⊙ FOUND PK NAIL
- SET X SET "X" IN CONCRETE
- SET ⊙ SET PK NAIL & DISC MARKED W/ LICENSE NO. 53536
- ⊙ SET 1/2-INCH X 14-INCH IRON PIPE MARKED W/ LICENSE NO. 53536 UNLESS OTHERWISE NOTED
- △ ACCESS CONTROL
- REFERS TO DIMENSIONS AS SHOWN ON THE PLAT OF ROCHESTER MARKETPLACE, OLMTSTED COUNTY, MN



**Egan, Field & Nowak, Inc.**  
land surveyors since 1872