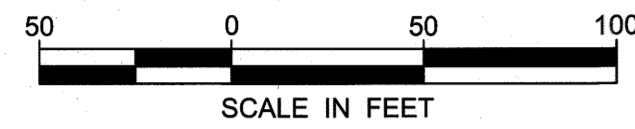


WILLOW HEIGHTS FIFTH SUBDIVISION



ORIENTATION OF THIS BEARING SYSTEM IS ASSUMED AND BASED ON THE WEST LINE OF THE SW 1/4 OF SEC. 23, T106N, R14W HAVING A BEARING OF N 00°05'23" E.

LEGEND

- DENOTES 1/2 INCH BY 18 INCH REBAR SET AND MARKED BY LICENSE NO. 47034
- DENOTES 3/4 INCH BY 18 INCH IRON PIPE SET AND MARKED BY LICENSE NO. 47034
- DENOTES 5/8 INCH IRON MONUMENT FOUND UNLESS NOTED OTHERWISE

UTILITY EASEMENT DEFINED

AN UNOBSTRUCTED EASEMENT FOR THE CONSTRUCTION AND MAINTENANCE OF ALL NECESSARY OVERHEAD, UNDERGROUND OR SURFACE PUBLIC UTILITIES, INCLUDING RIGHTS TO CONDUCT DRAINAGE AND TRIMMING ON SAID EASEMENT.

U.E. = UTILITY EASEMENT

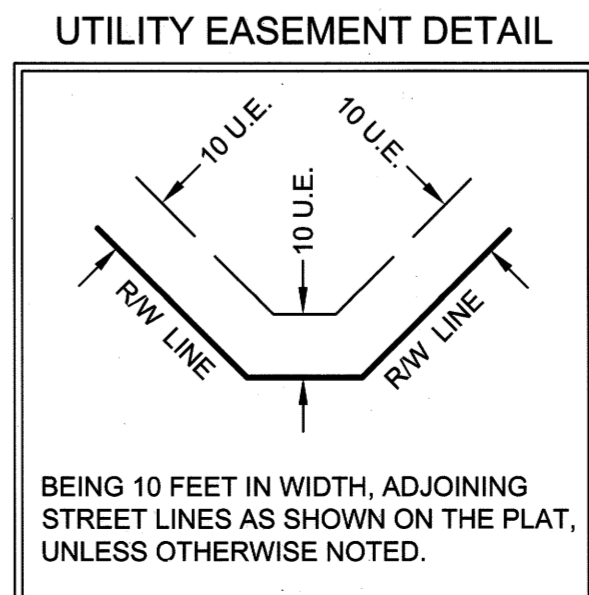
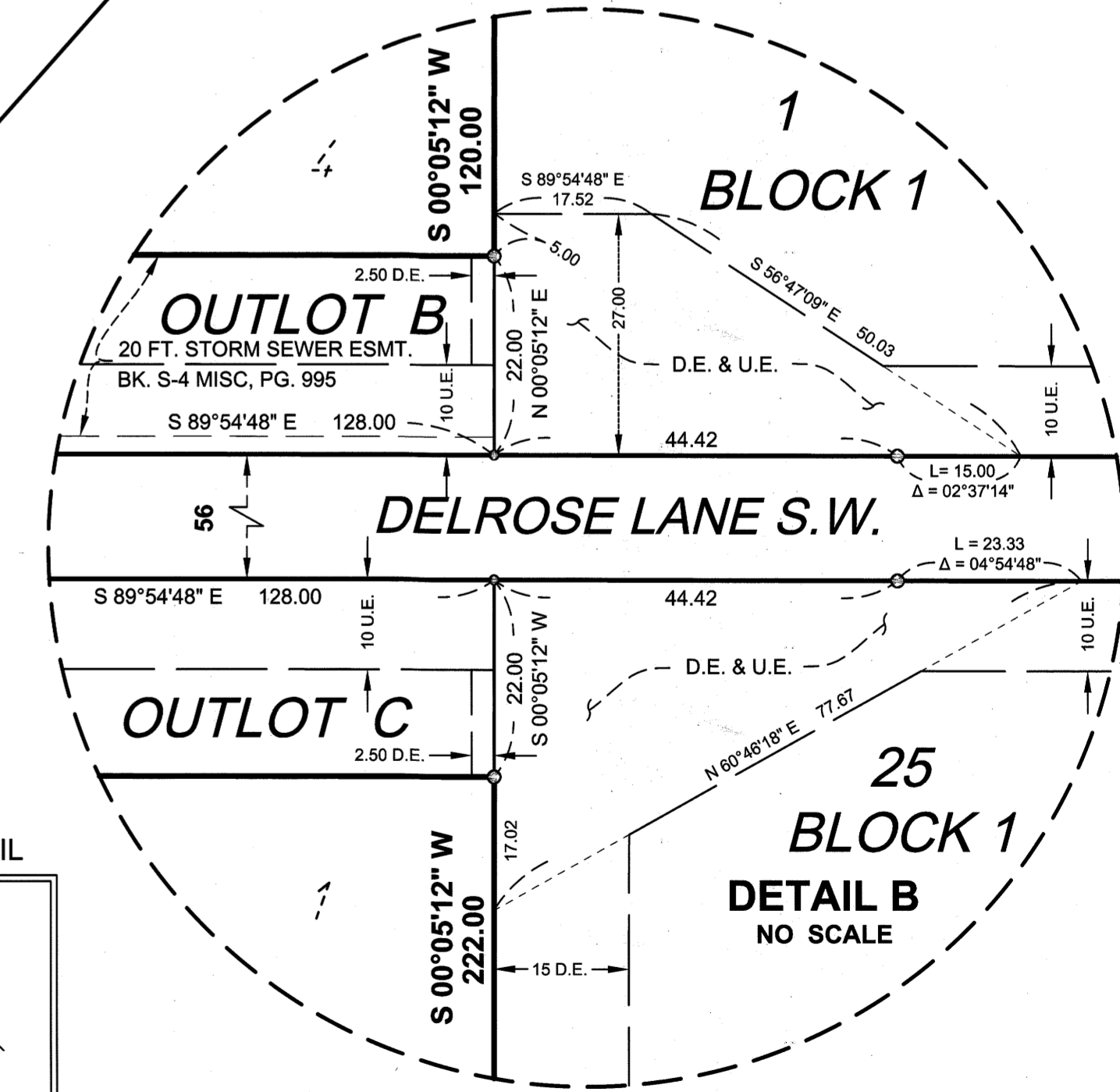
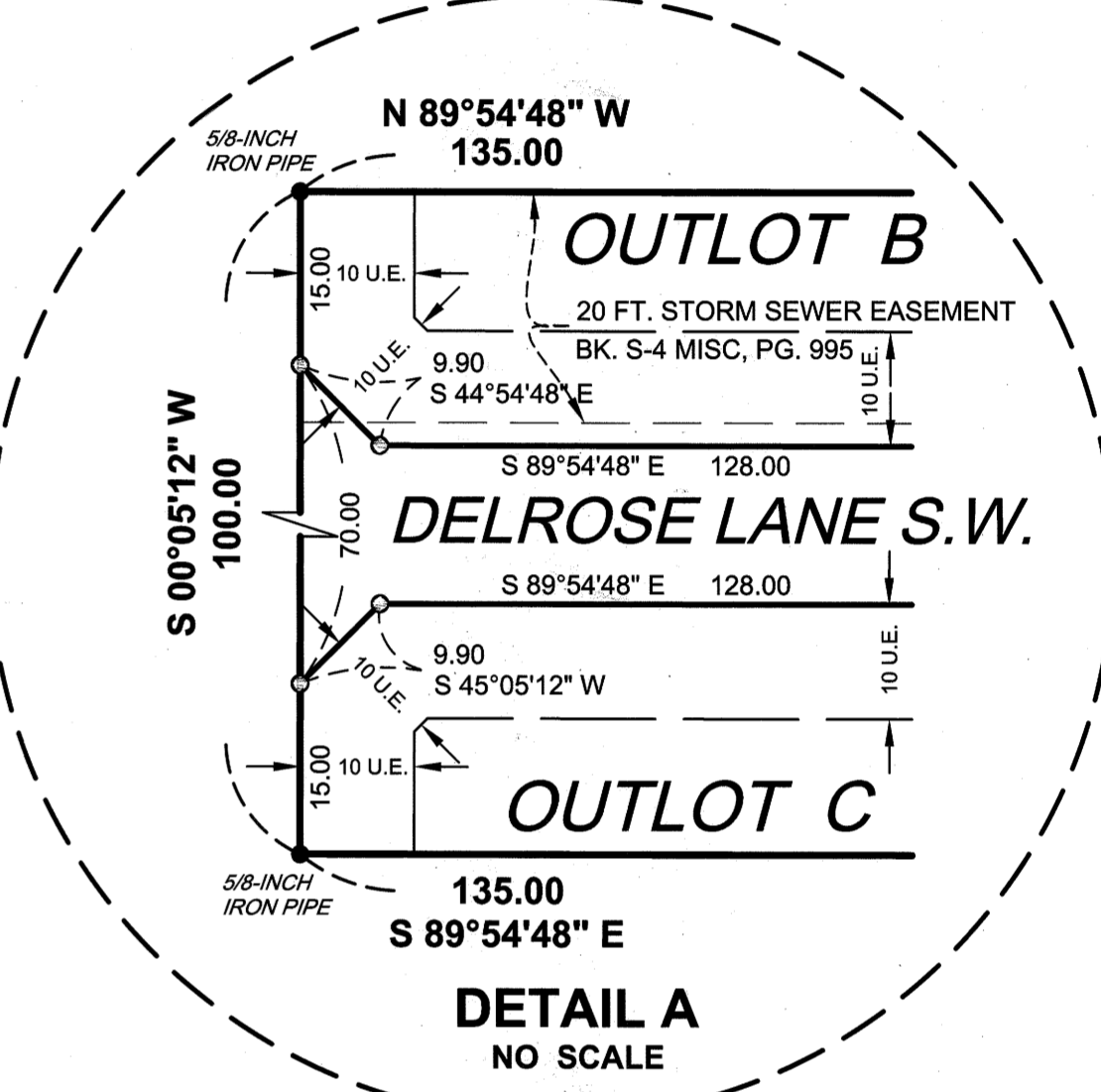
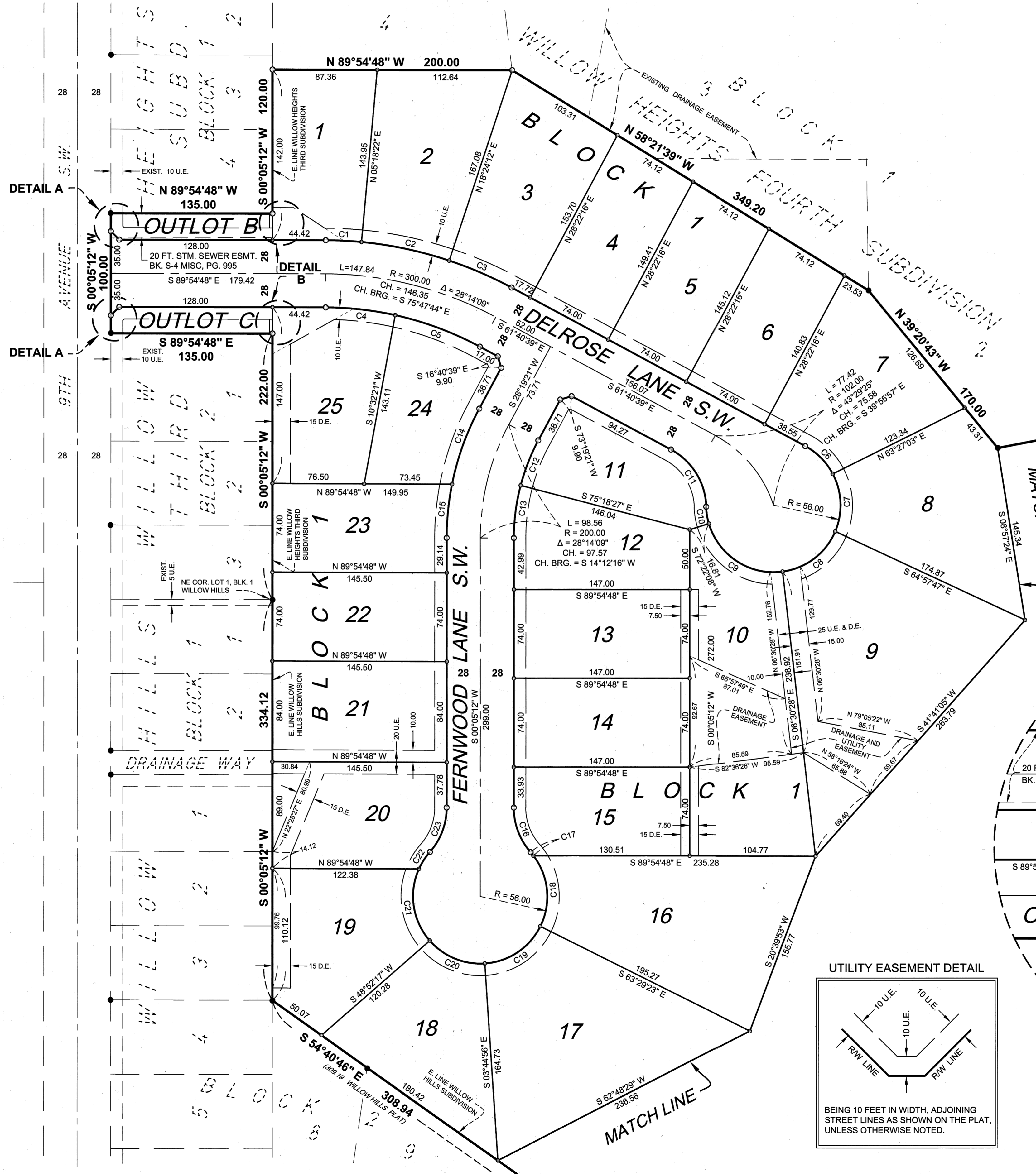
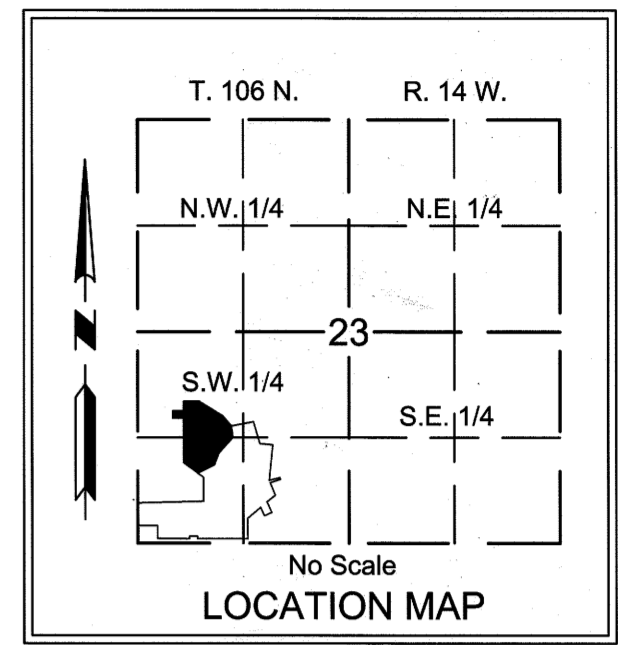
DRAINAGE EASEMENT DEFINED

AN UNOBSTRUCTED EASEMENT FOR THE CONSTRUCTION AND MAINTENANCE OF UNDERGROUND AND SURFACE DRAINAGE FACILITIES, AND UTILITY EASEMENT.

D.E. = DRAINAGE EASEMENT

CURVE DATA

CURVE	LENGTH	RADIUS	DELTA	CHORD	CH. BEARING
C1	29.88	328.00	05°13'10"	29.87	S 87°18'13" E
C2	74.97	328.00	13°05'44"	74.80	S 78°08'46" E
C3	56.79	328.00	09°55'15"	56.72	S 66°38'17" E
C4	58.49	272.00	12°19'18"	58.38	S 83°45'09" E
C5	75.55	272.00	15°54'51"	75.31	S 89°38'05" E
C6	33.18	56.00	33°57'04"	32.70	S 44°42'08" E
C7	49.57	56.00	50°43'12"	47.97	S 02°22'00" E
C8	57.99	56.00	59°19'48"	55.43	S 52°39'31" W
C9	79.63	56.00	81°28'05"	73.09	N 56°56'33" W
C10	14.20	56.00	14°31'51"	14.16	N 08°56'35" W
C11	58.64	56.00	60°00'00"	56.00	N 31°40'39" W
C12	40.44	172.00	13°28'13"	40.34	S 21°35'14" W
C13	44.33	172.00	14°45'56"	44.20	S 07°28'10" W
C14	67.21	228.00	16°53'24"	66.97	S 19°52'39" W
C15	45.15	228.00	11°20'45"	45.08	S 05°45'35" W
C16	40.47	56.00	41°24'35"	39.60	S 20°37'05" E
C17	3.92	56.00	04°00'27"	3.92	S 39°19'09" E
C18	62.38	56.00	63°49'33"	59.21	S 05°24'09" E
C19	58.39	56.00	59°44'27"	55.78	S 56°22'51" W
C20	51.43	56.00	52°37'13"	49.64	N 67°26'19" W
C21	63.83	56.00	65°18'27"	60.43	N 08°28'30" W
C22	16.93	56.00	17°19'03"	16.86	N 32°50'15" E
C23	40.47	56.00	41°24'35"	39.60	N 20°47'29" E



Mark Heselius P:\UZ\W\WOODRY\140720\9-survey\92-CAD\15-dwg\W0140720_F-PLAT01.dwg Thursday, May 17, 2018

