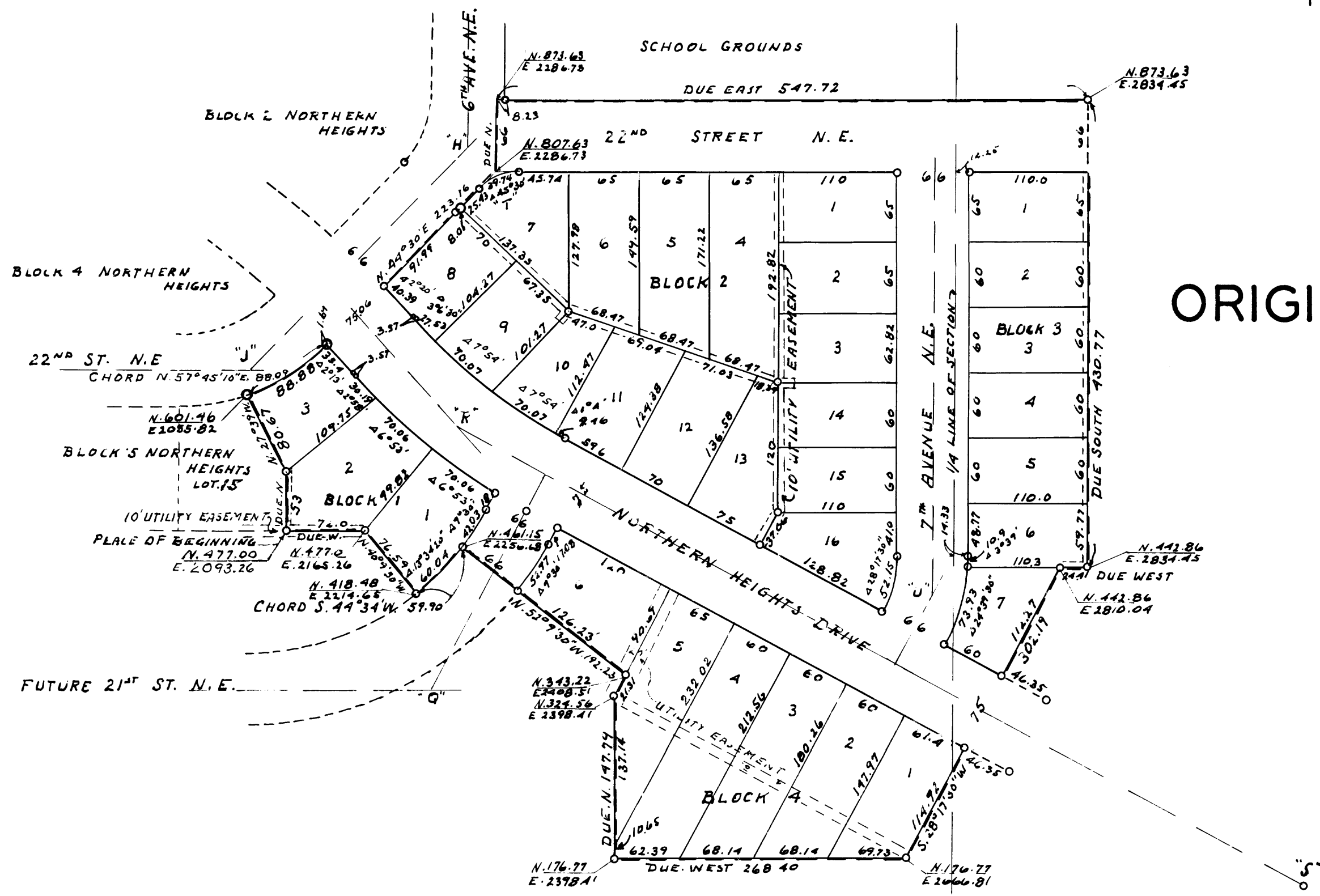


NORTHERN HEIGHTS SECOND ADDITION. ROCHESTER, MINNESOTA.

BOUNDARY LINES SHOWN THUS ————
MONUMENTS SHOWN THUS ○
MEASUREMENTS IN FEET AND DECIMALS.
SCALE 1 INCH = 100 FEET.
1961.

John J. Kerr COUNTY SURVEYOR.
REGISTERED LAND SURVEYOR NO. 238.



SURVEYOR'S NOTE:
THE LOCATION OF COORDINATE 0.0 IS AT THE WEST 1/4 CORNER OF SECTION 25, THE SOUTH LINE OF THE NORTHWEST 1/4 IS ASSUMED TO BE DUE EAST AND WEST.
LOT MEASUREMENTS ON CURVES ARE ARC MEASUREMENTS.

CURVE	ANGLE	DEGREE	RADIUS	LENGTH	TANGENT	COORDINATE	LOCATION OF P.I.
"J"	45°30'	36"	159.16	126.29	66.74	N. 629.00	E. 2060.00
"H"	44°5'	44"	130.22	100.19	52.72	N. 829.55	E. 2262.00
"G"	61°42'30"	20"	286.48	308.54	171.14	N. 330.00	E. 2227.52
"K"	19°58'30"	10°30'	545.68	190.24	96.08	N. 574.30	E. 2249.90
"S"	28°17'30"	5"	1145.72	565.83	288.81	N. 152.13	E. 3034.23
"Y"	45°30'	114°30'	50.04	39.74	20.98	N. 907.63	E. 2286.72
"U"	28°17'30"	41°20'	138.62	68.45	34.94	N. 418.87	E. 2641.58

CENTER SECTION 25 = CAST IRON MONUMENT.

ORIGINAL.

DEDICATION.

KNOW ALL MEN BY THESE PRESENTS THAT NORTHERN HEIGHTS INCORPORATED, A MINNESOTA CORPORATION OWNERS AND PROPRIETORS OF THE FOLLOWING DESCRIBED LANDS SITUATE IN THE STATE OF MINNESOTA AND COUNTY OF OLMSTED TO-WIT: ASSUMING THE SOUTH LINE OF THE NORTHWEST QUARTER (1/4) OF SECTION 25, TOWNSHIP 107, NORTH OF RANGE 14 WEST TO BE A DUE EAST AND WEST LINE AND COMMENCING FOR A PLACE OF BEGINNING AT THE SOUTHWEST CORNER OF LOT 15 BLOCK 5, NORTHERN HEIGHTS WHICH IS NORTH 477.0 FEET AND EAST 2093.26 FEET OF THE SOUTHWEST CORNER OF SAID NORTHWEST QUARTER (1/4) AND RUNNING THENCE DUE NORTH A DISTANCE OF 53.0 FEET, THENCE NORTH 27°39' WEST A DISTANCE OF 80.67 FEET TO A POINT IN THE SOUTH LINE OF 22ND STREET NORTHEAST, THENCE ALONG THE ARC OF A 192.16 FOOT RADIUS THE CHORD OF WHICH BEARS NORTH 57°45'10" EAST A DISTANCE OF 88.09 FEET, THENCE NORTH 44°30' EAST A DISTANCE OF 223.16 FEET, THENCE DUE NORTH A DISTANCE OF 66 FEET, THENCE DUE EAST A DISTANCE OF 547.72 FEET, THENCE DUE SOUTH A DISTANCE OF 430.77 FEET, THENCE DUE WEST A DISTANCE OF 24.41 FEET, THENCE SOUTH 28°17'30" WEST A DISTANCE OF 302.19 FEET, THENCE DUE WEST A DISTANCE OF 268.40 FEET, THENCE DUE NORTH A DISTANCE OF 147.79 FEET, THENCE NORTH 28°17'30" EAST A DISTANCE OF 21.31 FEET, THENCE NORTH 52°9'30" WEST A DISTANCE OF 192.23 FEET TO A POINT IN THE NORTH LINE OF 21ST STREET NORTHEAST, THENCE ALONG THE ARC OF A RADIUS 253.48 FEET THE CHORD OF WHICH BEARS SOUTH 44°34' WEST A DISTANCE OF 59.90 FEET, THENCE NORTH 40°9'50" WEST A DISTANCE OF 76.59 FEET, THENCE DUE WEST A DISTANCE OF 72.00 FEET TO THE PLACE OF BEGINNING, THAT THEY HAVE CAUSED THE SAME TO BE SURVEYED AND PLATTED AS "NORTHERN HEIGHTS SECOND ADDITION" AND DO HEREBY DONATE AND DEDICATE TO THE PUBLIC FOR THE PUBLIC USE THE STREETS AND AVENUES AS SHOWN ON THE ANNEXED PLAT AND ALSO GRANT THE UTILITY EASEMENTS AS SHOWN ON SAID PLAT FOR THE USE OF THE MUNICIPALITY OR OTHER PUBLIC UTILITIES FOR THE INSTALLATION AND MAINTENANCE OF FACILITIES INSTALLED IN AND OVER SAID EASEMENTS TO SERVE ADJACENT OR OTHER PREMISES IN THE VICINITY. IN WITNESS WHEREOF WE HAVE HERE-UN-TO SET OUR HANDS AND SEALS THIS 22 DAY OF SEPTEMBER A.D. 1961. IN THE PRESENCE OF:

WITNESS: NORTHERN HEIGHTS INCORPORATED.
Dennis J. Pierce WITNESS: BY ATTEST *Dennis J. Pierce* PRESIDENT.
Raymond E. Engel WITNESS: BY ATTEST *Raymond E. Engel* SECRETARY.

CORPORATE ACKNOWLEDGEMENT.

STATE OF MINNESOTA, COUNTY OF OLMSTED, S. S. ON THIS 22 DAY OF September A.D. 1961 BEFORE ME A NOTARY PUBLIC PERSONALLY APPEARED DENNIS J. PIERCE AND LLOYD ENGELS MA TO ME PERSONALLY KNOWN WHO BEING EACH BY ME DULY SWORN DID SAY THAT THEY ARE RESPECTIVELY THE PRESIDENT AND SECRETARY OF NORTHERN HEIGHTS INC. THAT THE SEAL AFFIXED IS THE CORPORATE SEAL OF SAID CORPORATION AND THAT SAID INSTRUMENT WAS SIGNED AND SEALED IN ITS BEHALF BY AUTHORITY OF ITS MEMBERS AND THE SAID DENNIS J. PIERCE AND LLOYD ENGELS MA ACKNOWLEDGE SAID INSTRUMENT TO BE THE FREE ACT AND DEED OF SAID CORPORATION.

Raymond E. Engel NOTARY PUBLIC, OLMSTED COUNTY, MINNESOTA.
MY COMMISSION EXPIRES Dec 8 1964.

SURVEYORS CERTIFICATE.

STATE OF MINNESOTA, COUNTY OF OLMSTED, S. S. I, JOHN J. KERR COUNTY SURVEYOR IN AND FOR SAID COUNTY DO HEREBY CERTIFY THAT I HAVE SURVEYED AND PLATTED THE PROPERTY DESCRIBED ON THIS PLAT AS NORTHERN HEIGHTS SECOND ADDITION, THAT THE PLAT IS A CORRECT REPRESENTATION OF SAID SURVEY AS MADE, THAT ALL DISTANCES ARE CORRECTLY SHOWN IN FEET AND DECIMALS OF A FOOT, THAT MONUMENTS FOR THE GUIDANCE OF FUTURE SURVEYS HAVE BEEN PLACED IN THE GROUND AS SHOWN ON SAID PLAT, THAT THE OUTSIDE BOUNDARIES ARE CORRECTLY DESIGNATED, THAT THERE ARE NO WET LANDS OR PUBLIC HIGHWAYS TO BE DESIGNATED OTHER THAN AS SHOWN.

John J. Kerr COUNTY SURVEYOR.
REGISTERED LAND SURVEYOR NO. 238.

STATE OF MINNESOTA, COUNTY OF OLMSTED, CITY OF ROCHESTER, S. S. I, ELFREDA REITER CITY CLERK IN AND FOR SAID CITY OF ROCHESTER DO HEREBY CERTIFY THAT THE ACCOMPANYING PLAT WAS DULY APPROVED BY THE COMMON COUNCIL OF THE CITY OF ROCHESTER, IN TESTIMONY WHEREOF I HAVE SET MY HAND AND AFFIXED THE SEAL OF SAID CITY THIS 22 DAY OF March 1961.

Elfreda Reiter CITY CLERK.

TAXES PAID FOR THE YEAR OF 1961.

_____ COUNTY TREASURER.

TAXES PAID AND TRANSFER ENTERED THIS 30th DAY OF March 1962.

Raymond E. Engel COUNTY AUDITOR.

STATE OF MINNESOTA, COUNTY OF OLMSTED, S. S. FILED FOR RECORD THIS 30th DAY OF March A.D. 1962 AT 10:40 O'CLOCK A.M. AND RECORDED IN BOOK OF PLATS _____ PAGE _____

Henry J. Engel REGISTER OF DEEDS.