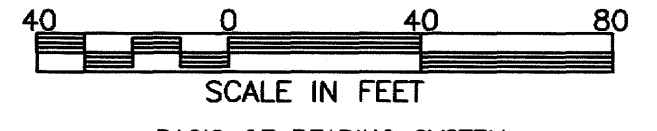
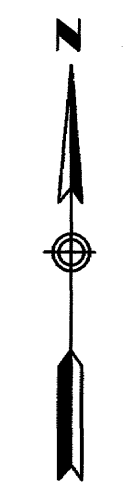


NORTHWEST COMMERCIAL CENTER SEVENTH



SCALE IN FEET
BASIS OF BEARING SYSTEM:
ALL BEARINGS ARE IN RELATIONSHIP WITH THE
EAST LINE OF OUTLOT A, NORTHWEST COMMERCIAL
CENTER, WHICH IS ASSUMED TO BE SOUTH 00
DEGREES 40 MINUTES 21 SECONDS WEST.

KNOW ALL PERSONS BY THESE PRESENTS: That Northwest Investments of La Crosse, LLC, a Wisconsin limited liability company, owner of the following described property:

Outlot A, NORTHWEST COMMERCIAL CENTER, Olmsted County, Minnesota.

Containing 4.15 acres, more or less.

Has caused the same to be surveyed and platted as NORTHWEST COMMERCIAL CENTER SEVENTH and does hereby dedicate to the public for public use, the utility easements as created by this plat.

In witness whereof, said Northwest Investments of La Crosse, LLC, a Wisconsin limited liability company, has caused these presents to be signed by its proper officer this 22 day of DECEMBER, 2017.

SIGNED: Northwest Investments of La Crosse, LLC

Mark S. Zietlow
Mark S. Zietlow, Member

STATE OF WISCONSIN
COUNTY OF LACROSSE

This instrument was acknowledged before me on 12-22-17 by Mark S. Zietlow, Member of Northwest Investments of La Crosse, LLC, a Wisconsin limited liability company.

Wendy A. Banasik
Notary Public, LACROSSE County, WISCONSIN Notary Printed Name

My commission expires 4-12-2019

SURVEYOR'S CERTIFICATE

I Jeffrey J. Rolfsen do hereby certify that this plat was prepared by me or under my direct supervision; that I am a duly Licensed Land Surveyor in the State of Minnesota; that this plat is a correct representation of the boundary survey; that all mathematical data and labels are correctly designated on this plat; that all monuments depicted on this plat have been, or will be correctly set within one year; that all water boundaries and wet lands, as defined in Minnesota Statutes, Section 505.01, Subd. 3, as of the date of this certificate are shown and labeled on this plat; and all public ways are shown and labeled on this plat.

Dated this 20TH day of DECEMBER, 2017.

Jeffrey J. Rolfsen
Jeffrey J. Rolfsen, Professional Surveyor
Minnesota License No. 49003

STATE OF MINNESOTA
COUNTY OF OLMSTED

This instrument was acknowledged before me on December 20, 2017 by Jeffrey J. Rolfsen.

Margaret Purves
Notary Public, Olmsted County, Minnesota

Margaret Purves
Notary Printed Name

My commission expires January 31, 2018

OLMSTED COUNTY SURVEYOR

I hereby certify that in accordance with Minnesota Statutes, Section 505.021, Subd. 11, this plat has been reviewed and approved this 21 day of DECEMBER, 2017.

Mark E. Severson
Olmsted County Surveyor

CITY APPROVAL

STATE OF MINNESOTA
COUNTY OF OLMSTED
CITY OF ROCHESTER

I, Anissa Hollingshead, City Clerk, in and for the City of Rochester, do hereby certify that on the 4 day of December, 2017, the accompanying plat was duly approved by the Common Council of the City of Rochester. In testimony thereof, I have hereunto signed my name and affixed the seal of said City of Rochester this 28 day of December, 2017.

Anissa Hollingshead
Anissa Hollingshead, City Clerk

PROPERTY RECORDS AND LICENSING

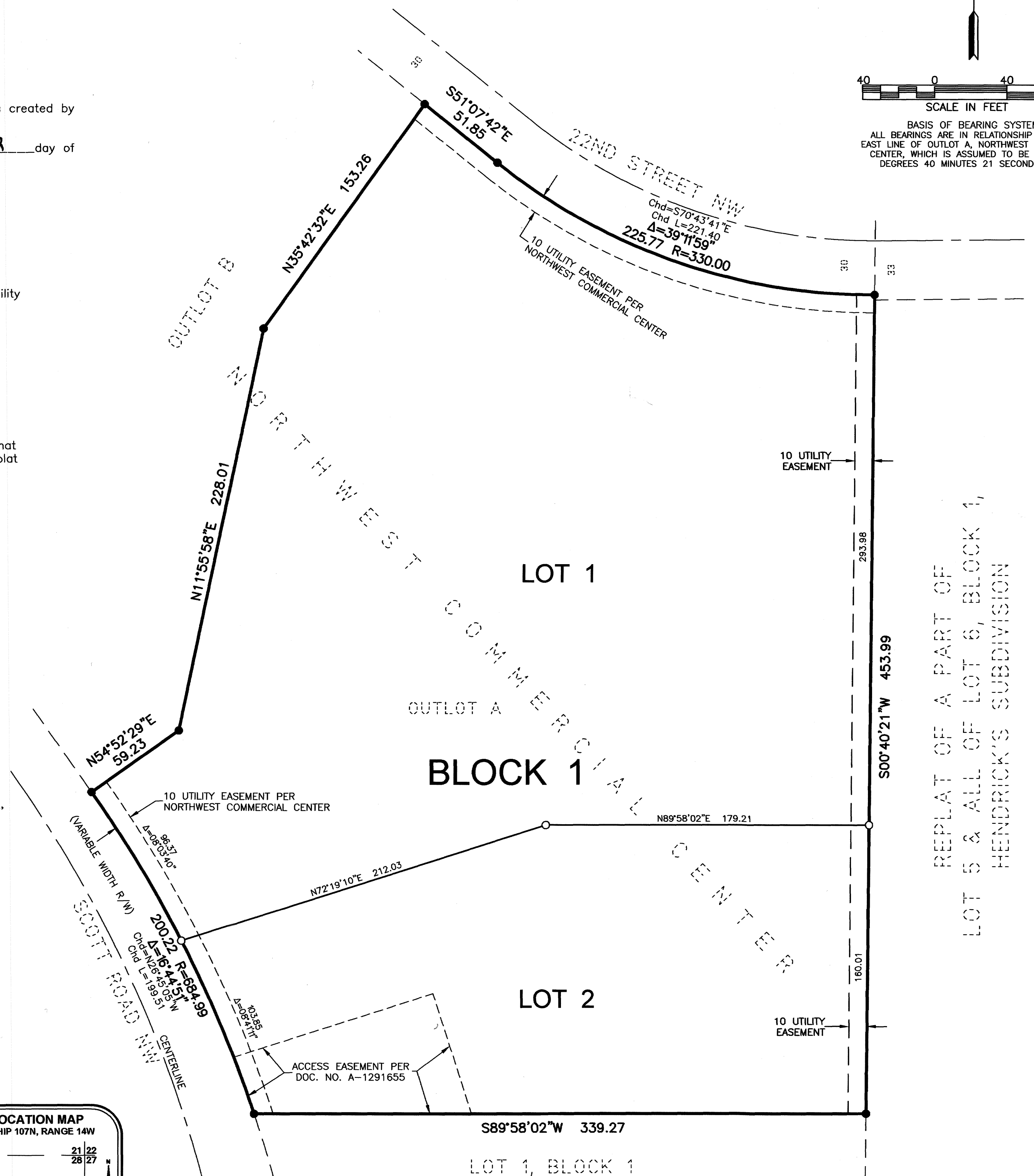
Taxes payable in the year 2017 on the land described herein have been paid, there are no delinquent taxes and transfer has been entered this 29th day of December, 2017.

DOCUMENT NUMBER A1440828

I hereby certify that this instrument was filed in the Office of Property Records and Licensing for the record on this 29th day of December, 2017, at 3 o'clock P.M., and was duly recorded in the Olmsted County records.

W. Mark Kupski
Director of Property Records & Licensing

Wendy von Wald
Deputy



NOTE:

ALL MONUMENTS SHOWN THUS: ○
ARE SET 5/8" I.D. CAPPED PIPES WITH LICENSE NO.
49003 WHICH WILL BE SET WITHIN 1 YEAR AFTER
RECORDING OF THIS PLAT.

ALL MONUMENTS SHOWN THUS: ●
ARE FOUND 5/8" PIPES UNLESS OTHERWISE NOTED.

UTILITY EASEMENT DEFINED:

AN UNOBSTRUCTED EASEMENT FOR THE CONSTRUCTION
AND MAINTENANCE OF ALL NECESSARY UNDERGROUND
OR SURFACE PUBLIC UTILITIES INCLUDING RIGHTS TO
CONDUCT DRAINAGE AND TRIMMING ON SAID EASEMENT.

1648 Third Avenue SE
Rochester, MN 55904
507-289-3919
www.wsbeng.com



1429A