

DISCOVERY SQUARE

INSTRUMENT OF DEDICATION

KNOW ALL MEN BY THESE PRESENTS: That Mayo Clinic, a Minnesota non-profit corporation, fee owner, of the following described property:

Lots 1, 2, 3, 4, 5, 6, 7, 8, 9, 10, 11, 12, 13 and 14, Block 7, of the Original Plat of the town, now city of Rochester, Olmsted County, Minnesota, together with the North-South alley in said Block 7. Lying south of 4th Street SW and north of 5th Street SW, vacated by the Common Council of the City of Rochester in Resolution No. 238-17 recorded July 7, 2017, as Document No. 1427817 in the Office of the Olmsted County Recorder.

Containing 2.27 Acres more or less.

Has caused the same to be surveyed and platted as DISCOVERY SQUARE, and does hereby dedicate to the public for public use, the drainage and utility easements as created by this plat.

In witness whereof, said Mayo Clinic, a Minnesota non-profit corporation, has caused these presents to be signed by its proper officer this 8th day of November, 2017.

SIGNED: Mayo Clinic

[Signature]
Timothy L. Siegfried, as 11/08/17
Division Chair - Facilities

STATE OF MINNESOTA
COUNTY OF OLMSTED

This instrument was acknowledged before me on 11/08/17, by Timothy L. Siegfried, as Division Chair - Facilities of Mayo Clinic, a Minnesota non-profit corporation, on behalf of the corporation.

[Signature] Kamren Marie Gottschalk
Notary Public, Olmsted County, Minnesota Notary Printed Name
My Commission Expires 1/21/21

SURVEYORS CERTIFICATE

I Mark R. Salo do hereby certify that this plat was prepared by me or under my direct supervision; that I am a duly Licensed Land Surveyor in the State of Minnesota; that this plat is a correct representation of the boundary survey; that all mathematical data and labels are correctly designated on the plat; that all monuments depicted on this plat have been, or will be correctly set within one year; that all water boundaries and wet lands, as defined in Minnesota Statutes, Section 505.01, Subd 3, as of the date of this certificate are shown and labeled on the plat; and all public ways are shown and labeled on this plat.

Dated this 31st day of October, 2017

[Signature]
Mark R. Salo, Licensed Land Surveyor,
Minnesota License No. 43933

STATE OF MINNESOTA
COUNTY OF Hennepin

This instrument was acknowledged before me on October 31, 2017, by Mark R. Salo, a Licensed Land Surveyor.

[Signature] Julie Sabacky
Notary Public, Hennepin County, Minnesota Notary Printed Name
My Commission Expires January 31, 2019

OLMSTED COUNTY SURVEYOR

I hereby certify that in accordance with Minnesota Statutes, Section 505.021, Subd. 11, this plat has been reviewed and approved this 15 day of NOVEMBER, 2017.

[Signature]
Olmsted County Surveyor

CITY APPROVAL
STATE OF MINNESOTA
COUNTY OF OLMSTED
CITY OF ROCHESTER

I, Anissa Hollingshead, City Clerk, in and for the City of Rochester, do hereby certify that on the 16 day of October, 2017, the accompanying plat was duly approved by the Common Council of the City of Rochester. In testimony thereof, I have hereunto signed my name and affixed the seal of said City of Rochester this 20 day of November, 2017.

[Signature]
Anissa Hollingshead, City Clerk

PROPERTY RECORDS AND LICENSING

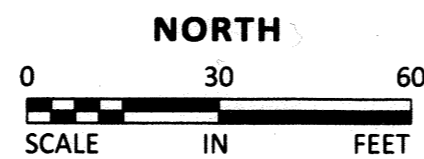
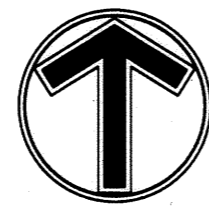
Taxes payable in the year 2017 on the land described herein have been paid, there are no delinquent taxes and transfer has been entered this 20th day of November, 2017.

DOCUMENT NUMBER A1438030

I hereby certify that this instrument was filed in the office of Property Records and Licensing for the record on this 20th day of November, 2017, at 3 o'clock P.M. and was duly recorded in the Olmsted County records.

[Signature]
Director of Property Records & Licensing

[Signature]
Deputy

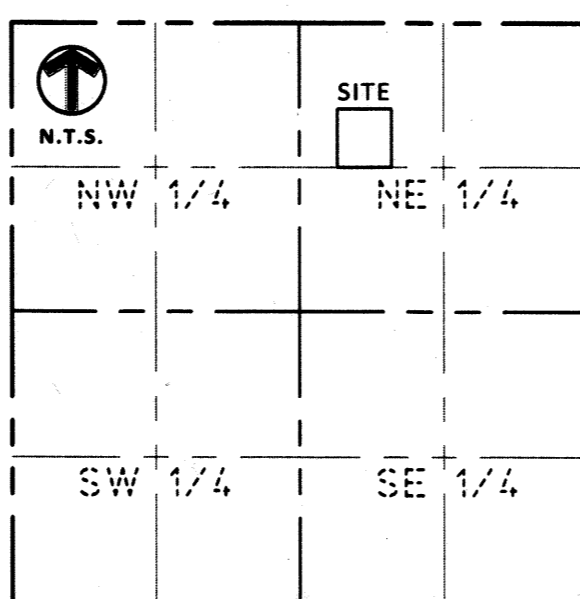


- DENOTES 1/2 INCH BY 14 INCH IRON MONUMENT SET AND MARKED BY LICENSE NO. 43933.
- DENOTES 1/2 INCH IRON MONUMENT MARKED BY LICENSE NO. 22422 FOUND, UNLESS OTHERWISE NOTED.

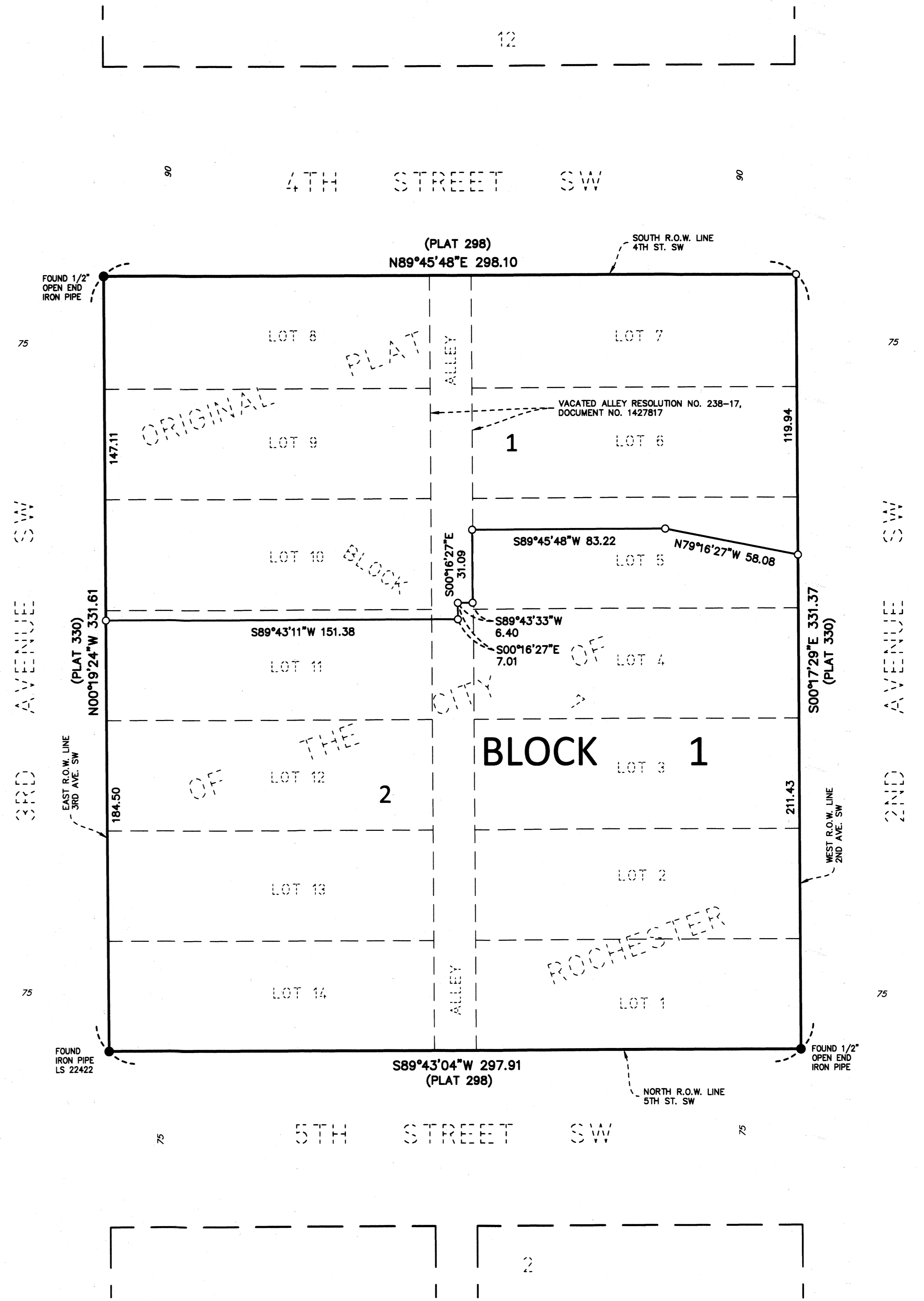
ALL BEARINGS ARE IN RELATIONSHIP WITH THE OLMSTED COUNTY COORDINATE SYSTEM NAD 83, ADJUSTED 1996.

(PLAT) - REFERS TO DIMENSIONS AS SHOWN ON THE ORIGINAL PLAT OF ROCHESTER

PROPERTY LOCATION MAP



SECTION 2, TOWNSHIP 106 N, RANGE 14 W,
OLMSTED COUNTY, MINNESOTA



1419A