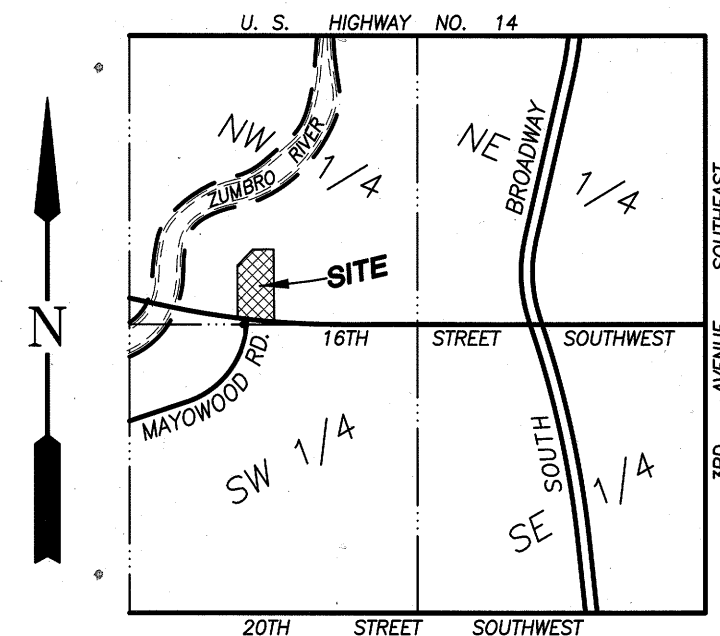
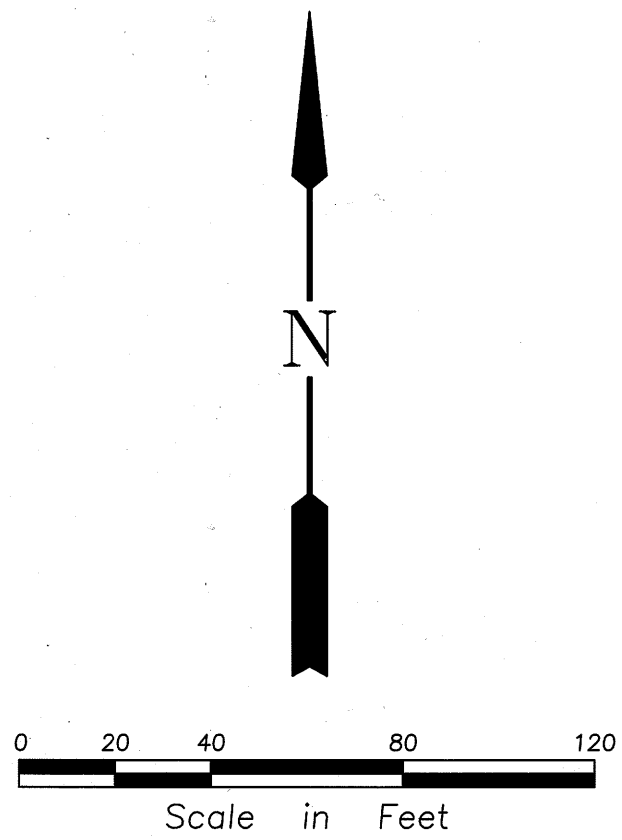


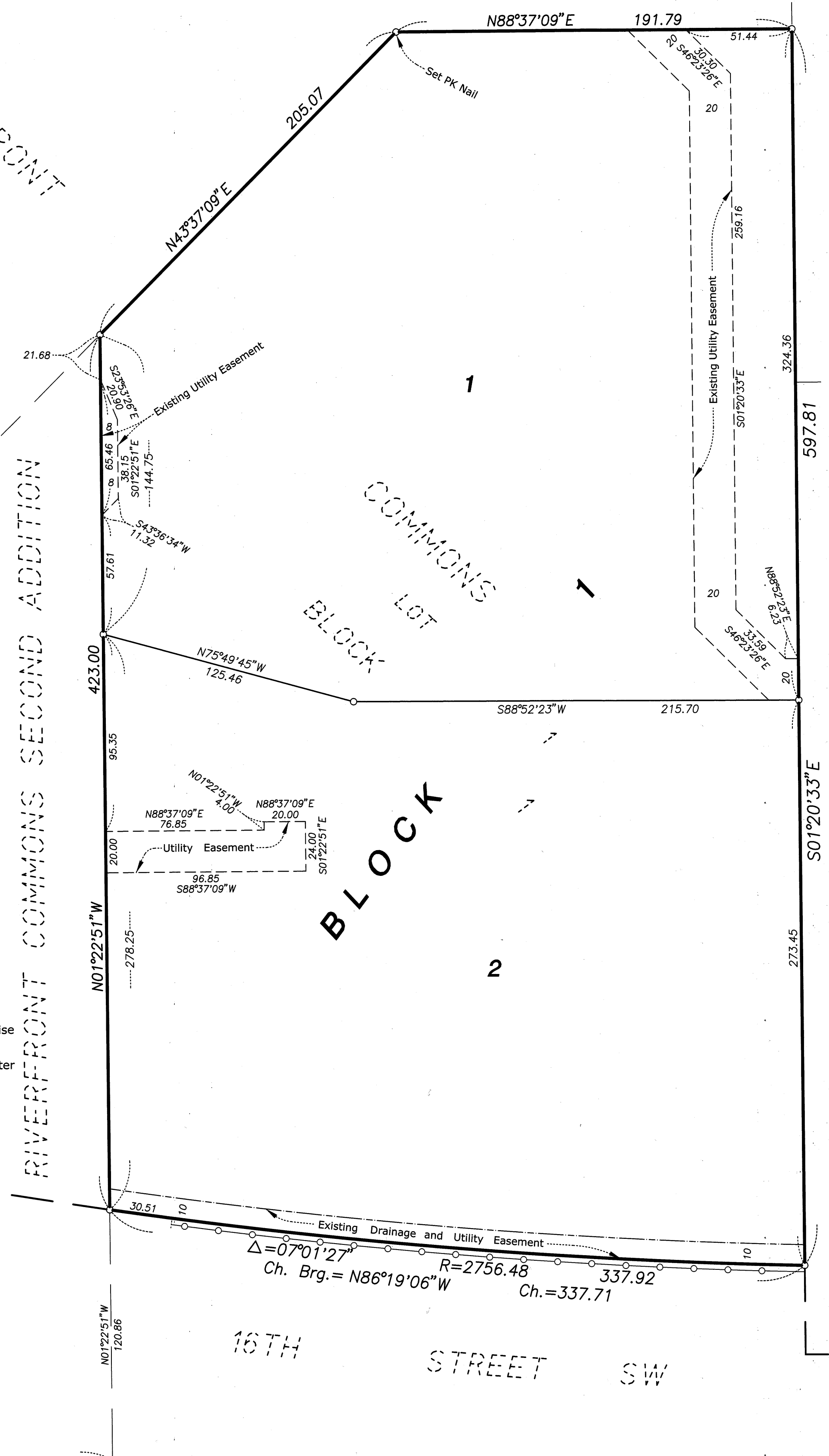
RIVERFRONT COMMONS THIRD ADDITION

RIVERFRONT



The south line of the Southwest Quarter of the Northwest Quarter of Section 11, Township 106, Range 14 has a bearing of N89°26'57"E

- Denotes 1/2 inch by 14 inch iron monument set and marked by Minnesota License No. 22036 unless otherwise shown.
- Denotes right of access dedicated to the City of Rochester



STONE BARN ESTATES SECOND SUBDIVISION

STONE BARN ESTATES

KNOW ALL PERSONS BY THESE PRESENTS: That 988 Rochester, LLC, a Minnesota limited liability company, fee owner of the following described property:

Lot 1, Block 1, RIVERFRONT COMMONS, according to the recorded plat thereof, Olmsted County, Minnesota, containing 4.29 acres more or less.

Has caused the same to be surveyed and platted as RIVERFRONT COMMONS THIRD ADDITION and does hereby dedicate to the public for public use the drainage and utility easements as created by this plat.

In witness whereof said 988 Rochester, LLC, a Minnesota limited liability company, has caused these presents to be signed by its proper officer this 15 day of September, 2017.

988 Rochester, LLC

Clark A. Gassen, Chief Manager

STATE OF MINNESOTA
COUNTY OF HENNEPIN

This instrument was acknowledged before me on SEPTEMBER 15th, 2017, by Clark A. Gassen, Chief Manager of 988 Rochester, LLC, a Minnesota limited liability company, on behalf of the company.

JOSEPH A. KWIATKOWSKI
Notary Printed Name

[Signature]
Notary Public, MINNESOTA
My Commission Expires JANUARY 31ST, 2023

I, Gary C. Huber do hereby certify that this plat was prepared by me or under my direct supervision; that I am a duly Licensed Land Surveyor in the State of Minnesota; that this plat is a correct representation of the boundary survey; that all mathematical data and labels are correctly designated on this plat; that all monuments depicted on this plat have been, or will be correctly set within one year; that all water boundaries and wet lands, as defined in Minnesota Statutes, Section 505.01, Subd. 3, as of the date of this certificate are shown and labeled on this plat; and all public ways are shown and labeled on this plat.

Dated this 14th day of September, 2017.

[Signature]
Gary C. Huber, Licensed Land Surveyor
Minnesota License No. 22036

STATE OF MINNESOTA
COUNTY OF DAKOTA

This instrument was acknowledged before me on this 14th day of SEPTEMBER, 2017, by Gary C. Huber.

GREGORY L. GENTZ
Notary Printed Name

[Signature]
Notary Public, Minnesota
My Commission Expires January 31, 2020

OLMSTED COUNTY SURVEYOR

I hereby certify that in accordance with Minnesota Statutes, Section 505.021, Subd. 11, this plat has been reviewed and approved this 25 day of SEPTEMBER, 2017.

[Signature]
Olmsted County Surveyor

CITY APPROVAL

State of Minnesota
County of Olmsted
City of Rochester

I, Anissa Hollingshead, City Clerk, in and for the City of Rochester, do hereby certify that on the 18 day of September, 2017, the accompanying plat was duly approved by the Common Council of the City of Rochester. In testimony thereof, I have hereunto signed my name and affixed the seal of said City of Rochester this 29 day of September, 2017.

[Signature]
Anissa Hollingshead, City Clerk

PROPERTY RECORDS AND LICENSING

Taxes payable in the year 2017 on the land described herein have been paid, there are no delinquent taxes and transfer has been entered this 2ND day of October, 2017.
DOCUMENT NUMBER A1434423

I hereby certify that this instrument was filed in the Office of Property Records and Licensing for the record on this 2ND day of October, 2017, at 11 1/2 o'clock A.M., and was duly recorded in the Olmsted County records.

[Signature]
Director of Property Records & Licensing

[Signature]
Deputy

Rehder and Associates, Inc.

1411A