

CRIMSON RIDGE FOURTH SUBDIVISION

KNOW ALL PERSONS BY THESE PRESENTS: That Wright Homes, Inc., a Minnesota corporation, owner, and Olmsted National Bank, mortgagee, of the following described property:

Lots 1 through 9, Block 1, CRIMSON RIDGE SECOND SUBDIVISION, Olmsted County, Minnesota.

Containing 0.88 acres, more or less.

Have caused the same to be surveyed and platted as CRIMSON RIDGE FOURTH SUBDIVISION.

In witness whereof, said Wright Homes, Inc., a Minnesota corporation, has caused these presents to be signed by its proper officer this 26 day of APRIL 2017.

SIGNED: Wright Homes, Inc.

Everett M. Wright
Everett M. Wright, President

STATE OF MINNESOTA
COUNTY OF OLMSTED

This instrument was acknowledged before me on APRIL 26, 2018 by Everett M. Wright, President of Wright Homes, Inc., a Minnesota corporation.

Henry S. Johnson
Notary Public, OLMSTED County, Minnesota

KIMBERLY SUE CARSON
Notary Printed Name

My commission expires JAN 31, 2018

In witness whereof, said Olmsted National Bank, has caused these presents to be signed by its proper officer this 27th day of April, 2017.

SIGNED: Olmsted National Bank

Brad T. Becker
Brad T. Becker, President and CEO

STATE OF MINNESOTA
COUNTY OF OLMSTED

This instrument was acknowledged before me on 4-27-17 by Brad T. Becker, President and CEO of Olmsted National Bank.

Kathy Scheevel
Notary Public, OLMSTED County, Minnesota

Kathy Scheevel
Notary Printed Name

My commission expires 1-31-2020

SURVEYOR'S CERTIFICATE

I, Jeffrey J. Rolfsen do hereby certify that this plat was prepared by me or under my direct supervision; that I am a duly Licensed Land Surveyor in the State of Minnesota; that this plat is a correct representation of the boundary survey; that all mathematical data and labels are correctly designated on this plat; that all monuments depicted on this plat have been, or will be correctly set within one year; that all water boundaries and wet lands, as defined in Minnesota Statutes, Section 505.01, Subd. 3, as of the date of this certificate are shown and labeled on this plat; and all public ways are shown and labeled on this plat.

Dated this 21ST day of APRIL, 2017.

Jeffrey J. Rolfsen
Jeffrey J. Rolfsen, Professional Surveyor
Minnesota License No. 49003

STATE OF MINNESOTA
COUNTY OF OLMSTED

This instrument was acknowledged before me on April 21, 2017 by Jeffrey J. Rolfsen.

Courtney Pierce
Notary Public, OLMSTED County, Minnesota

Courtney Pierce
Notary Printed Name

My commission expires 1-31-2021

OLMSTED COUNTY SURVEYOR

I hereby certify that in accordance with Minnesota Statutes, Section 505.021, Subd. 11, this plat has been reviewed and approved this 21 day of APRIL, 2017.

Mark E. Swanson
Olmsted County Surveyor

CITY APPROVAL

STATE OF MINNESOTA
COUNTY OF OLMSTED
CITY OF ROCHESTER

I, Anissa Hollingshead, City Clerk, in and for the City of Rochester, do hereby certify that on the 17th day of April, 2017, the accompanying plat was duly approved by the Common Council of the City of Rochester. In testimony thereof, I have hereunto signed my name and affixed the seal of said City of Rochester this 17th day of May, 2017.

Anissa Hollingshead
Anissa Hollingshead, City Clerk

PROPERTY RECORDS AND LICENSING

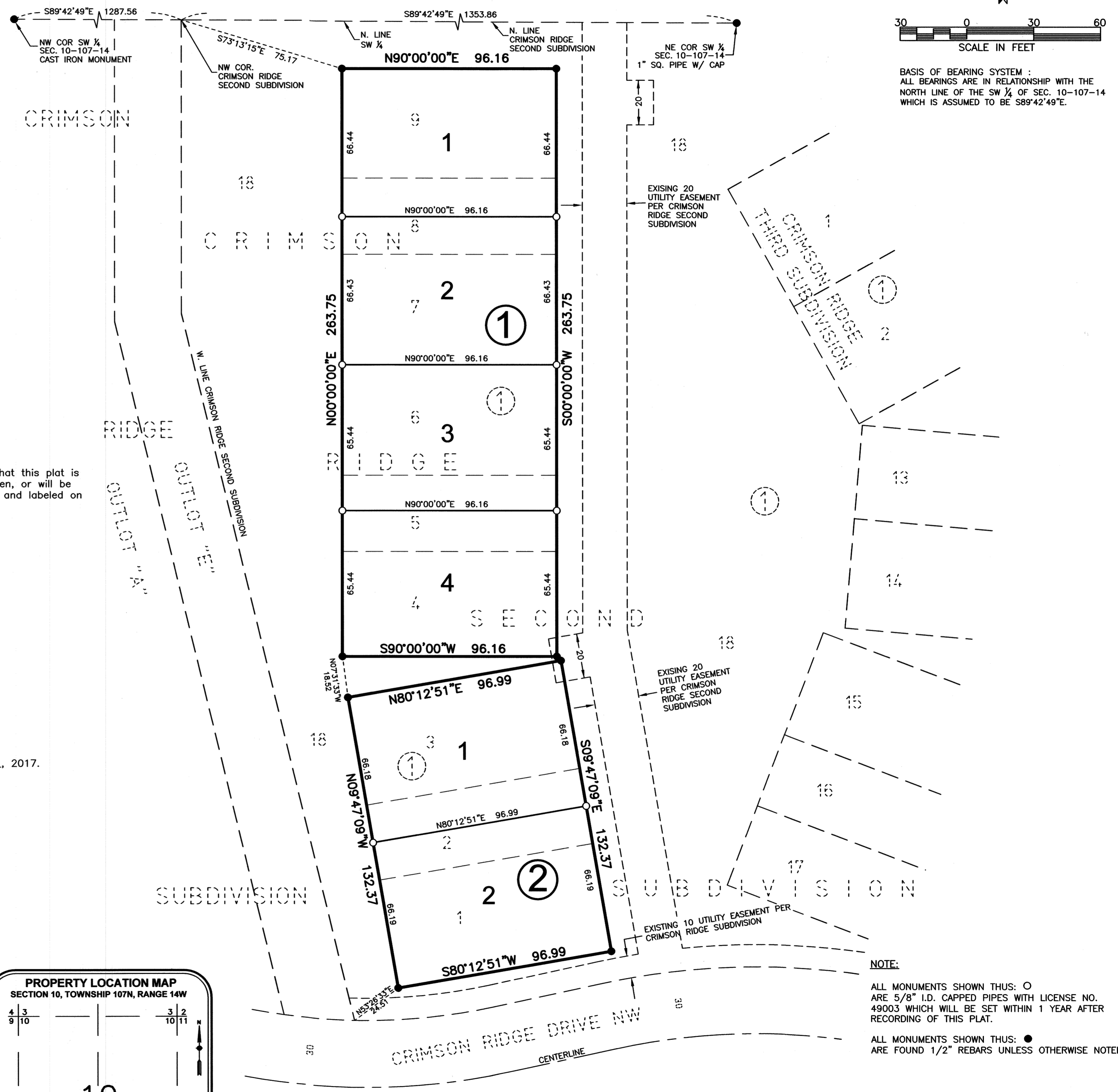
Taxes payable in the year 2017 on the land described herein have been paid, there are no delinquent taxes and transfer has been entered this 11th day of MAY, 2017.

DOCUMENT NUMBER A1423566

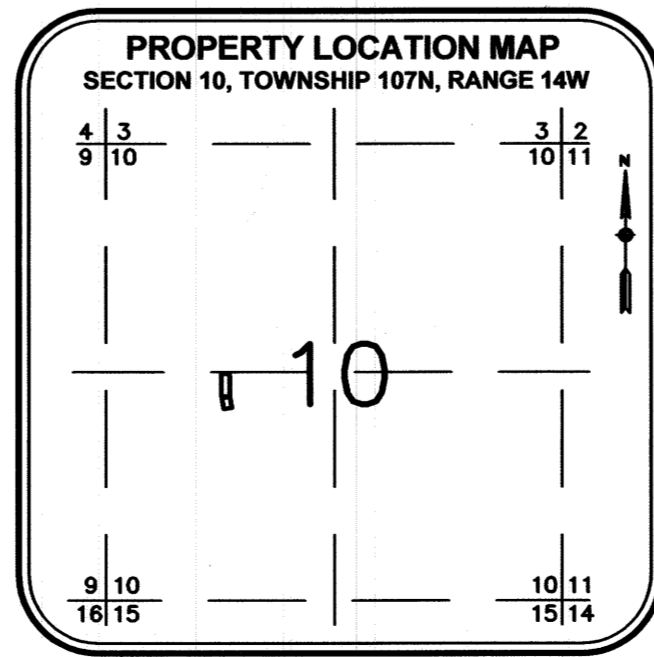
I hereby certify that this instrument was filed in the Office of Property Records and Licensing for the record on this 11th day of MAY, 2017, at 4 o'clock P.M., and was duly recorded in the Olmsted County records.

W. Mark Krupski
Director of Property Records & Licensing

Wendy von Wald
Deputy



BASIS OF BEARING SYSTEM : ALL BEARINGS ARE IN RELATIONSHIP WITH THE NORTH LINE OF THE SW 1/4 OF SEC. 10-107-14 WHICH IS ASSUMED TO BE S89°42'49"E.



1402A

1648 Third Avenue SE
Rochester, MN 55904
507-289-3919
www.wsbeng.com