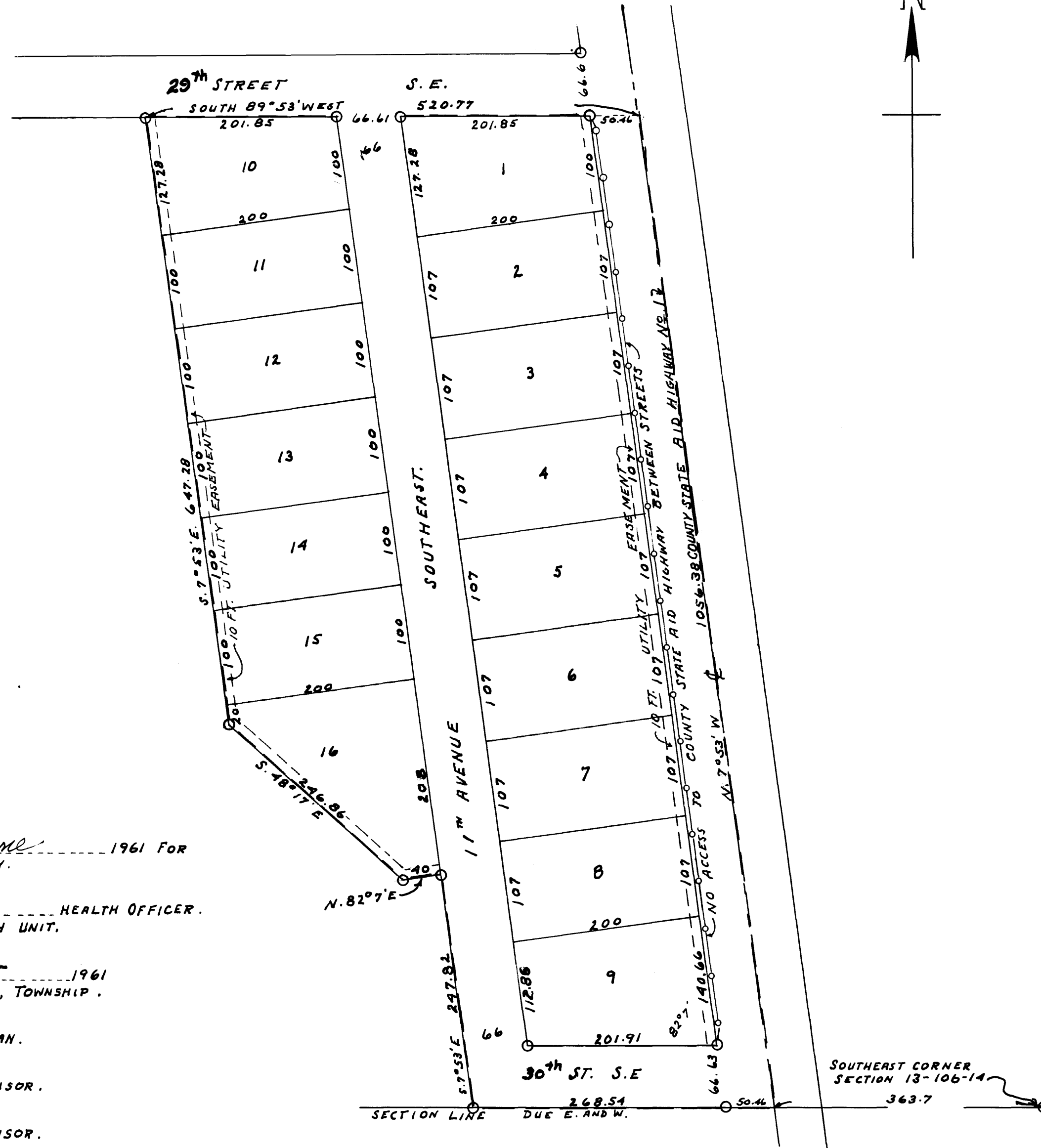


SOUTHPORT SUBDIVISION NUMBER SIX. OLMSTED COUNTY, MINNESOTA.

MONUMENTS SHOWN THUS ○
BOUNDARY LINES SHOWN THUS ———
SCALE 1 INCH = 100 FEET.

1961
John J. Kerr COUNTY SURVEYOR.
REGISTERED LAND SURVEYOR NO. 238.



APPROVED THIS 2nd DAY OF June 1961 FOR
SEWAGE DISPOSAL AND WATER SUPPLY.

Viktor Wilson, M.D. HEALTH OFFICER.
ROCHESTER OLMSTED COUNTY HEALTH UNIT.

APPROVED THIS 5th DAY OF Oct 1961
BOARD OF SUPERVISORS, ROCHESTER, TOWNSHIP.

Ed. F. Rabehl CHAIRMAN.
Robert Ringel SUPERVISOR.
Charity Peters SUPERVISOR.

APPROVED THIS 5th DAY OF Oct 1961

Ed. F. Rabehl CHAIRMAN.
OLMSTED COUNTY PLANNING COMMISSION.

DEDICATION.

KNOW ALL MEN BY THESE PRESENTS THAT SOUTHPORT INCORPORATED, A MINNESOTA CORPORATION, OWNERS AND PROPRIETORS OF THE FOLLOWING DESCRIBED LANDS SITUATE IN THE STATE OF MINNESOTA AND COUNTY OF OLMSTED TO-WIT: ASSUMING THE SOUTH LINE OF SECTION 13, TOWNSHIP 106, NORTH OF RANGE 14 WEST TO BE A DUE EAST AND WEST LINE AND COMMENCING AT THE SOUTHEAST CORNER OF SAID SECTION AND RUNNING THENCE DUE WEST ALONG THE SOUTH LINE OF SAID SECTION A DISTANCE OF 343.7 FEET TO THE CENTER LINE OF STATE AID ROAD NO. 22 FOR A PLACE OF BEGINNING, RUNNING THENCE NORTH 7°53' WEST ALONG THE CENTER OF SAID ROAD A DISTANCE OF 1056.38 FEET, THENCE SOUTH 89°53' WEST A DISTANCE OF 520.77 FEET, THENCE SOUTH 7°53' EAST A DISTANCE OF 647.28 FEET, THENCE SOUTH 48°17' EAST A DISTANCE OF 246.86 FEET, THENCE NORTH 82°07' EAST A DISTANCE OF 40 FEET, THENCE SOUTH 7°53' EAST A DISTANCE OF 247.82 FEET TO THE SOUTH LINE OF SAID SECTION, THENCE DUE EAST A DISTANCE OF 317.0 FEET TO THE PLACE OF BEGINNING, THAT THEY HAVE CAUSED THE SAME TO BE SURVEYED AND PLATTED AS "SOUTHPORT SUBDIVISION NUMBER SIX" AND HEREBY DONATE AND DEDICATE TO THE PUBLIC FOR THE PUBLIC USE THE STREETS, AVENUES AND ROADS AS SHOWN ON THE ANNEXED PLAT AND ALSO GRANT EASEMENT FOR THE PUBLIC UTILITY EASEMENTS AS SHOWN ON THE ANNEXED PLAT FOR THE USE OF THE MUNICIPALITY OR OTHER PUBLIC UTILITIES FOR THE INSTALLATION AND MAINTENANCE OF FACILITIES IN AND OVER SAID EASEMENTS TO SERVE ADJACENT OR OTHER PREMISES IN THE VICINITY, IN WITNESS WHEREOF WE HAVE HERE-UN-TO SET OUR HANDS AND SEALS THIS 5th DAY OF October A.D. 1961. IN THE PRESENCE OF.

Angela Collins WITNESS. SOUTHPORT INCORPORATED.
Robert Pengra WITNESS. BY *Ray J. Arend*
George J. Pungente WITNESS. BY *E. J. Armit* SECRETARY.

CORPORATE ACKNOWLEDGEMENT.

STATE OF MINNESOTA,
COUNTY OF OLMSTED, S. S.
ON THIS 5th DAY OF October A.D. 1961, BEFORE ME A NOTARY PUBLIC IN AND FOR SAID COUNTY PERSONALLY APPEARED RAY J. AREND AND E. J. ARMIT TO ME PERSONALLY KNOWN WHO BEING EACH BY ME DULY SWORN DID SAY THAT THEY ARE RESPECTIVELY THE PRESIDENT AND SECRETARY OF THE CORPORATION NAMED IN THE FOREGOING INSTRUMENT, THAT THE SEAL AFFIXED TO SAID INSTRUMENT IS THE CORPORATE SEAL OF SAID CORPORATION, AND THAT SAID INSTRUMENT WAS SIGNED AND SEALED IN BEHALF OF SAID CORPORATION BY AUTHORITY OF ITS BOARD OF DIRECTORS AND THE SAID RAY J. AREND AND E. J. ARMIT ACKNOWLEDGED SAID INSTRUMENT TO BE THE FREE ACT AND DEED OF SAID CORPORATION.

George J. Pungente NOTARY PUBLIC, OLMSTED COUNTY, MINNESOTA.
MY COMMISSION EXPIRES APRIL 10 1962.

SURVEYORS CERTIFICATE.

STATE OF MINNESOTA,
COUNTY OF OLMSTED, S. S.
I, JOHN J. KERR COUNTY SURVEYOR IN AND FOR SAID COUNTY DO HEREBY CERTIFY THAT I HAVE SURVEYED AND PLATTED THE PROPERTY DESCRIBED ON THIS PLAT AS "SOUTHPORT SUBDIVISION NUMBER SIX" THAT THE PLAT IS A CORRECT REPRESENTATION OF SAID SURVEY AS MADE, THAT ALL DISTANCES ARE CORRECTLY SHOWN ON THE PLAT IN FEET AND DECIMALS OF A FOOT, THAT MONUMENTS FOR THE GUIDANCE OF FUTURE SURVEYS ARE CORRECTLY PLACED IN THE GROUND AS SHOWN ON SAID PLAT, THAT THE OUTSIDE BOUNDARIES ARE CORRECTLY DESIGNATED, THAT THERE ARE NO WET LANDS OR PUBLIC HIGHWAYS TO BE DESIGNATED OTHER THAN AS SHOWN. DATED JUNE 2, A.D. 1961.

John J. Kerr COUNTY SURVEYOR.
REGISTERED LAND SURVEYOR NO. 238.

STATE OF MINNESOTA,
COUNTY OF OLMSTED, S. S.
I, ROSS BROWNING COUNTY AUDITOR IN AND FOR SAID COUNTY DO HEREBY CERTIFY THAT THE ATTACHED PLAT WAS DULY APPROVED BY THE BOARD OF COUNTY COMMISSIONERS AT A MEETING HELD ON THIS 13th DAY OF October A.D. 1961, IN TESTIMONY WHEREOF I HAVE SIGNED MY NAME AND AFFIXED THE SEAL OF SAID COUNTY THIS 13th DAY OF October A.D. 1961.

Ross Browning COUNTY AUDITOR.

TAXES PAID FOR THE YEAR OF 1960.

Karl B. Posther COUNTY TREASURER.

TAXES PAID AND TRANSFER ENTERED THIS 13th DAY OF October A.D. 1961.

Ross Browning COUNTY AUDITOR.

STATE OF MINNESOTA,
COUNTY OF OLMSTED, S. S.
FILED FOR RECORD THIS 13th DAY OF October A.D. 1961 AT 4 O-CLOCK P. M.
AND RECORDED IN BOOK OF PLATS PAGE

Henry J. Munn REGISTER OF DEEDS.