

BROADWAY AT CENTER

KNOW ALL PERSONS BY THESE PRESENTS: That Legacy Fund I, LLC, a Minnesota limited liability company, owner of the following described property:

Lots 7, 8, 9 and the North Half of Lot 10, Block 33, ORIGINAL PLAT, Rochester, Minnesota, TOGETHER WITH all that part of the vacated north-south alley within said Block 33 lying north of the easterly prolongation of the south line of the North Half of Lot 10 in said Block 33.

Containing in all, 0.56 acres, more or less.

Has caused the same to be surveyed and platted as BROADWAY AT CENTER.

In witness whereof, said Legacy Fund I, LLC, a Minnesota limited liability company, has caused these presents to be signed by its proper officer this 21st day of DECEMBER, 2016.

SIGNED: Legacy Fund I, LLC

Andrew C. Chafoulas, Chief Manager

STATE OF MINNESOTA
COUNTY OF OLMSTED

This instrument was acknowledged before me on DECEMBER 21, 2016 by Andrew C. Chafoulas, Chief Manager of Legacy Fund I, LLC, a Minnesota limited liability company.

Amie Sue Larson
Notary Public, Dodge County, Minnesota

AMIE SUE LARSON
Notary Printed Name

My commission expires JAN 31, 2018

SURVEYOR'S CERTIFICATE

I Mark E. Severson do hereby certify that this plat was prepared by me or under my direct supervision; that I am a duly Licensed Land Surveyor in the State of Minnesota; that this plat is a correct representation of the boundary survey; that all mathematical data and labels are correctly designated on this plat; that all monuments depicted on this plat have been, or will be correctly set within one year; that all water boundaries and wet lands, as defined in Minnesota Statutes, Section 505.01, Subd. 3, as of the date of this certificate are shown and labeled on this plat; and all public ways are shown and labeled on this plat.

Dated this 21 day of DECEMBER, 2016.

Mark E. Severson
Mark E. Severson, Professional Surveyor
Minnesota License No. 18887

STATE OF MINNESOTA
COUNTY OF OLMSTED

The instrument was acknowledged before me on DECEMBER 21, 2016 by Mark E. Severson.

Amie Sue Larson
Notary Public, Dodge County, Minnesota

AMIE SUE LARSON
Notary Printed Name

My commission expires JAN 31, 2018

OLMSTED COUNTY SURVEYOR

I hereby certify that in accordance with Minnesota Statutes, Section 505.021, Subd. 11, this plat has been reviewed and approved this 22 day of DECEMBER, 2016.

Jud A. Tholsson
Olmsted County Surveyor

CITY APPROVAL

STATE OF MINNESOTA
COUNTY OF OLMSTED
CITY OF ROCHESTER

I, Valori Langseth, Acting City Clerk, in and for the City of Rochester, do hereby certify that on the 18th day of May, 2016, the accompanying plat was duly approved by the Common Council of the City of Rochester. In testimony thereof, I have hereunto signed my name and affixed the seal of said City of Rochester this 21st day of December, 2016.

Valori Langseth
Valori Langseth, Acting City Clerk

PROPERTY RECORDS AND LICENSING

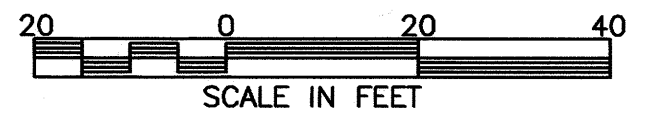
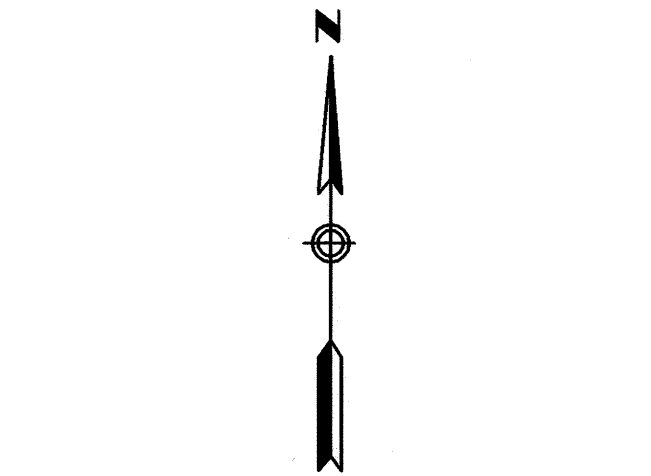
Taxes payable in the year 2016 on the land described herein have been paid, there are no delinquent taxes and transfer has been entered this 29th day of DECEMBER, 2016.

DOCUMENT NUMBER A1414838

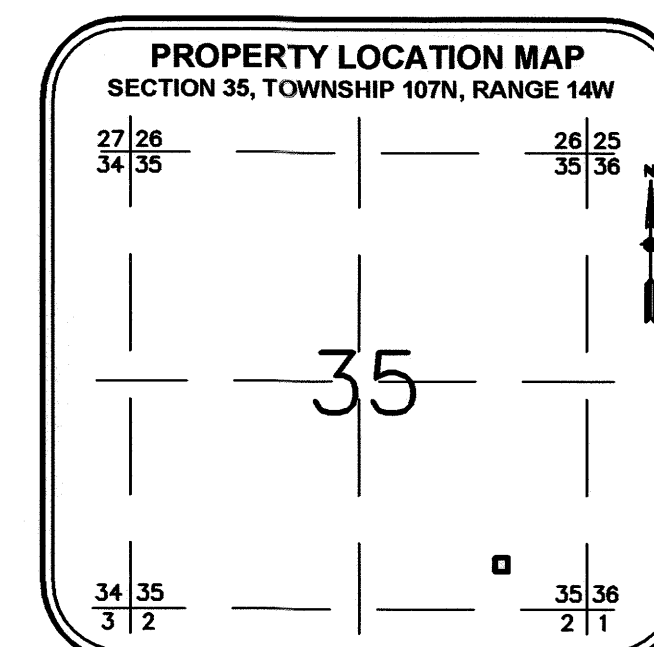
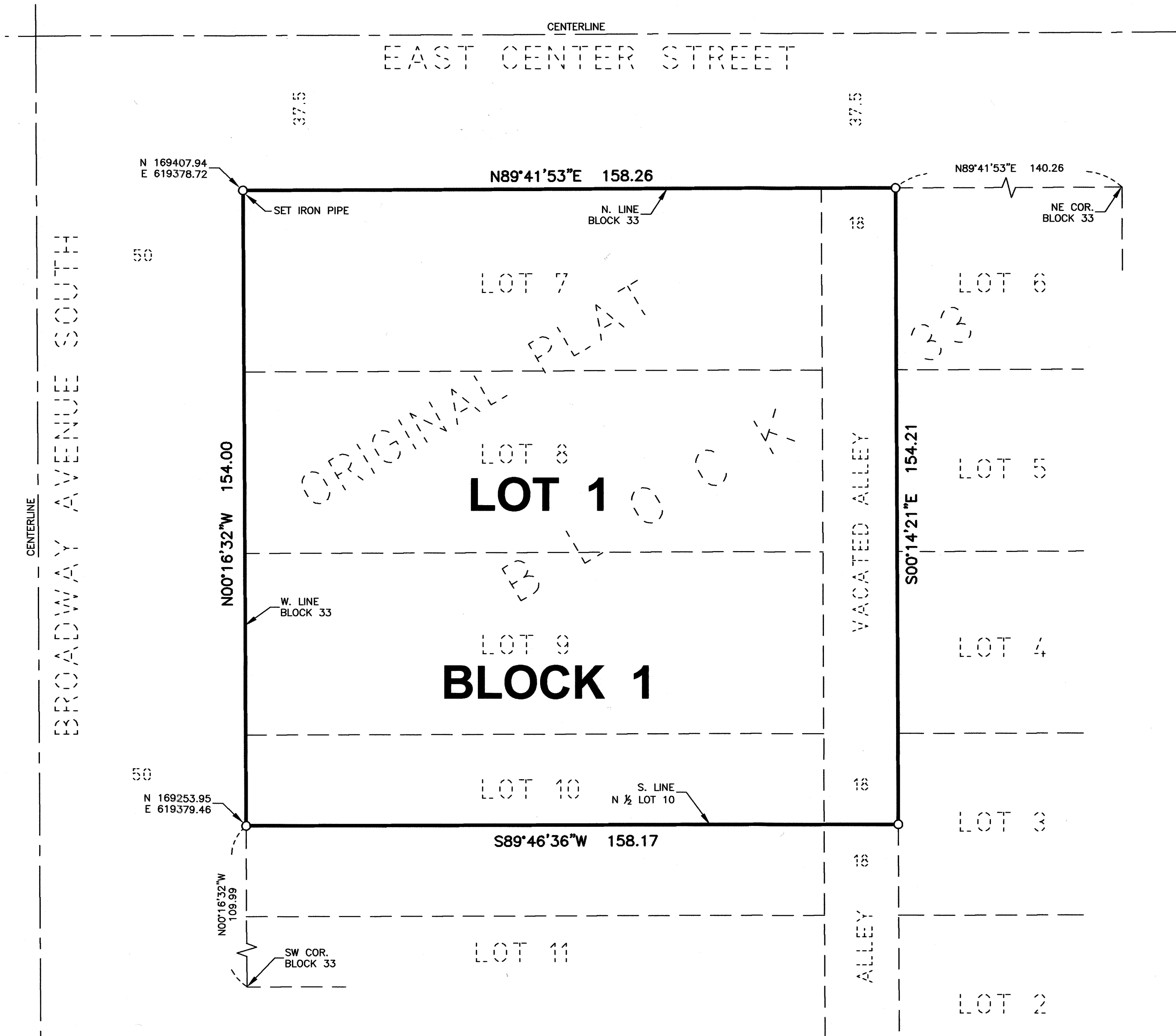
I hereby certify that this instrument was filed in the Office of Property Records and Licensing for the record on this 29th day of DECEMBER, 2016, at 11 o'clock A.M., and was duly recorded in the Olmsted County records.

W. Mark Krupski
Director of Property Records & Licensing

Wendy von Wed
Deputy



SCALE IN FEET
BASIS OF BEARING SYSTEM -
ALL BEARINGS ARE IN RELATIONSHIP WITH THE
WEST LINE OF BLOCK 33, ORIGINAL PLAT, WHICH
IS ASSUMED TO BE N00°16'32"W.



NOTES:

ALL MONUMENTS SHOWN THUS: O
ARE SET CHISELED CROSS UNLESS
OTHERWISE NOTED.

COORDINATES SHOWN ARE REFERENCED TO THE
OLMSTED COUNTY COORDINATE SYSTEM NAD83(96)

1383A

1648 Third Avenue SE
Rochester, MN 55904
507-289-3919
www.wsbeng.com

