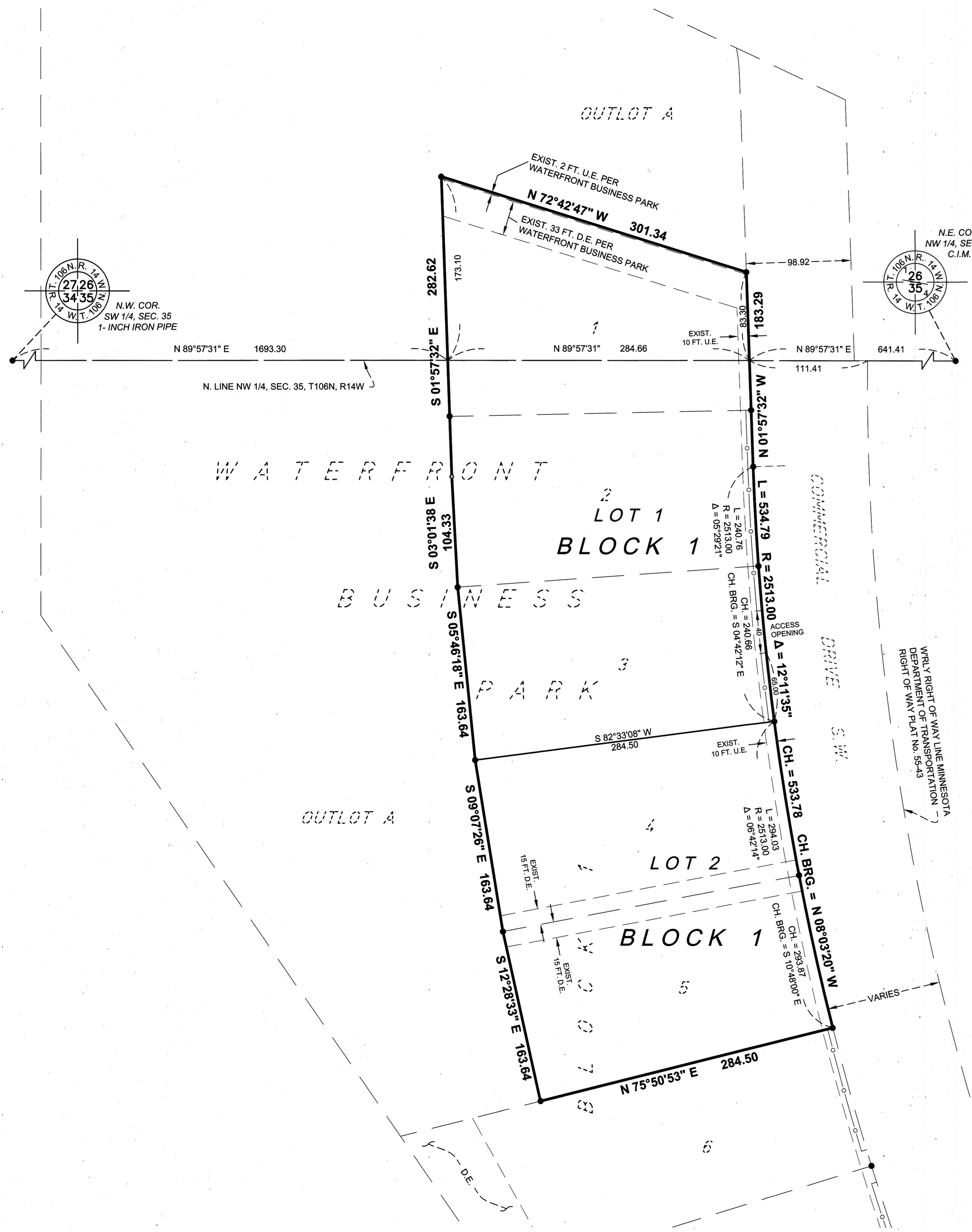
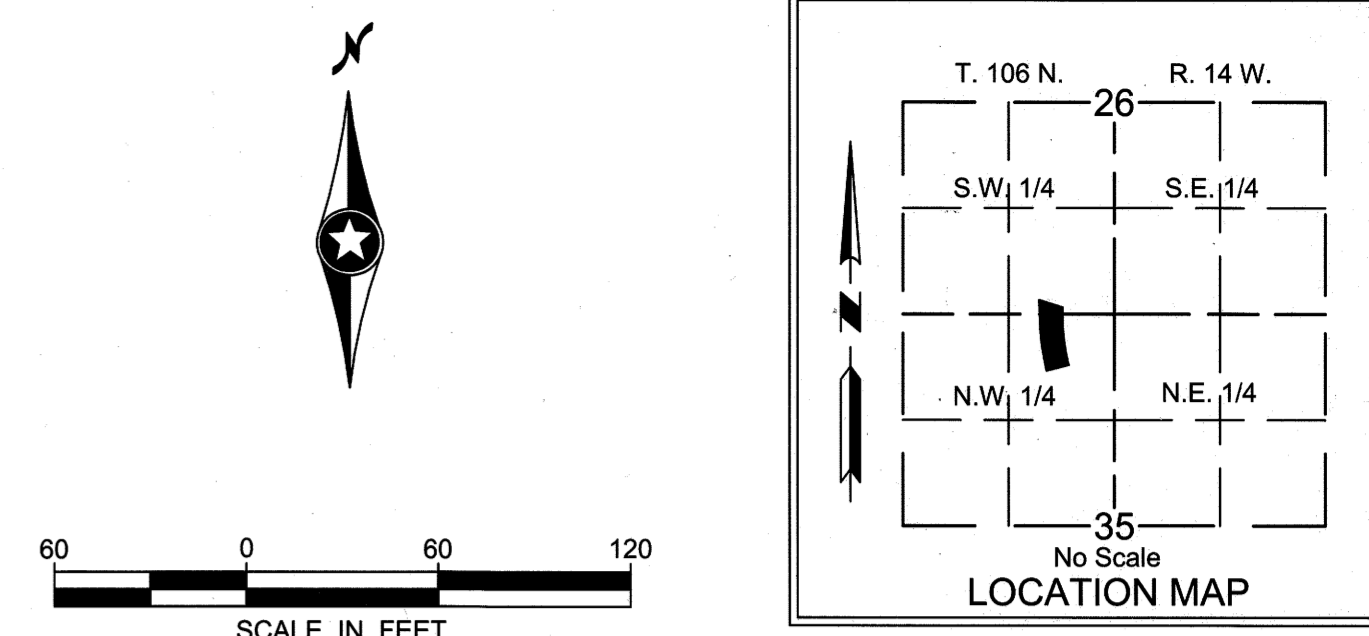


WATERFRONT BUSINESS PARK SECOND

LEGEND

- DENOTES 1/2 INCH BY 18 INCH REBAR SET AND MARKED BY LICENSE NO. 47034
 - DENOTES 3/4 INCH BY 18 INCH IRON PIPE SET AND MARKED BY LICENSE NO. 47034
 - DENOTES 1/2 INCH IRON PIPE FOUND
 - U.E. DENOTES UTILITY EASEMENT
 - D.E. DENOTES DRAINAGE EASEMENT
- ORIENTATION OF THIS BEARING SYSTEM IS BASED ON THE OLMSTED COUNTY COORDINATE SYSTEM NAD 83 (1996 ADJ.) WHEREIN THE NORTH LINE OF THE NW 1/4 OF SEC. 35, T106N, R14W, BEARS N 89°57'31" E
- CONTROLLED ACCESS DEFINED**
INGRESS AND EGRESS TO, FROM OR ACROSS THE ABUTTING ROADWAY IS RESTRICTED BY THE ROAD AUTHORITY PURSUANT TO MINNESOTA STATUTE 160.08.
- — ○ DENOTES CONTROLLED ACCESS



INSTRUMENT OF DEDICATION

KNOW ALL PERSONS BY THESE PRESENTS: That Waterfront Business Park, LLC, a Minnesota limited liability company, owner and mortgagor, and Sterling State Bank, a Minnesota banking corporation, mortgagee of the following described property:

Lots 1, 2, 3, 4 and 5, Block 1, WATERFRONT BUSINESS PARK, according to the plat thereof on file and of record in the office of the County Recorder, Olmsted County, Minnesota.

The above described tract contains a total of 5.20 acres, more or less.

have caused the same to be surveyed and platted as WATERFRONT BUSINESS PARK SECOND.

In witness whereof said Waterfront Business Park, LLC, a Minnesota limited liability company, has caused these presents to be signed by its proper officer this 18 day of OCTOBER, 2016.

Waterfront Business Park, LLC
Rick T. Penz
Rick T. Penz
Chief Manager

STATE OF MINNESOTA
COUNTY OF OLMSTED

The foregoing instrument was acknowledged before me this 18 day of October, 2016 by Rick T. Penz, Chief Manager of Waterfront Business Park, LLC on behalf of the company.

Mary Margaret Alexander
Mary Margaret Alexander
Notary Public, Olmsted County, Minnesota
My Commission Expires 1-31-2018

In witness whereof said Sterling State Bank, a corporation existing under the laws of the State of Minnesota, has caused these presents to be signed by its proper officer this 14 day of October, 2016.

Sterling State Bank
Lonny Hickey
Lonny Hickey
Executive Vice President

STATE OF MINNESOTA
COUNTY OF OLMSTED

The foregoing instrument was acknowledged before me this 17th day of October, 2016, by Lonny Hickey, Executive Vice President of Sterling State Bank on behalf of the corporation.

Jack Halk
Notary Public, Olmsted County, Minnesota
My Commission Expires 1/31/19

STATE OF MINNESOTA
COUNTY OF OLMSTED
CITY OF ROCHESTER

I, Aaron S. Reeves, City Clerk in and for the City of Rochester, do hereby certify that on the 2 day of October, 2016, the accompanying plat was duly approved by the Common Council of the City of Rochester. In testimony whereof, I have hereunto signed my name and affixed the Seal of said City of Rochester this 2 day of October, 2016.

Aaron S. Reeves
Aaron S. Reeves
City Clerk
City of Rochester

COUNTY SURVEYOR

I certify that this plat has been checked mathematically and that the plat conforms to applicable platting laws.

This 12 day of OCTOBER, 2016.

Paul Johnson
Olmsted County Surveyor

SURVEYOR'S CERTIFICATE

I, Mark J. Haselius, do hereby certify that this plat was prepared by me or under my direct supervision; that I am a duly Licensed Land Surveyor in the State of Minnesota; that this plat is a correct representation of the boundary survey; that all mathematical data and labels are correctly designated on this plat; that all monuments depicted on this plat have been, or will be correctly set by October 03, 2017; that all water boundaries and wet lands, as defined in Minnesota Statutes, Section 505.01, Subd. 3, as of the date of this certificate are shown and labeled on this plat; and all public ways are shown and labeled on this plat.

Dated this 12 day of October, 2016.

Mark J. Haselius
Mark J. Haselius, Licensed Land Surveyor
Minnesota License No. 47034

STATE OF MINNESOTA
COUNTY OF OLMSTED

This instrument was acknowledged before me this 12 day of October, 2016 by Mark J. Haselius.

John E. Madala
Notary Public, Olmsted County, MN
My Commission Expires 1/31/2020

PROPERTY RECORDS AND LICENSING

Taxes payable in the year 2016 on the land herein described have been paid, there are no delinquent taxes and transfer has been entered this 19th day of October, 2016.

Document Number A1409275

I hereby certify that this instrument was filed in the Office of Property Records and Licensing for the record on this 19th day of October, 2016, at 3 o'clock P.M. and was duly recorded in Olmsted County Records.

W. Mark Krupski
Olmsted County Director of Property Records and Licensing
By *Wendy von Wald*
Deputy

1370A



Mark Haselius P:\UZ\W\W\BU\136595\Q-survey\92-CAD\15-dwg\W\136595F-PLAT01.dwg Friday, October 7, 2016