

BUCKEYE FLATS

KNOW ALL PERSONS BY THESE PRESENTS: That Buckeye LLC, a Minnesota limited liability company, owner, and Premier Bank Rochester, a Minnesota corporation, mortgagee, of the following described property:

Lots 9, 12, 13 and 16, Block 1, EAST ROCHESTER ADDITION, Olmsted County, Minnesota.

Containing 0.62 acres, more or less.

Has caused the same to be surveyed and platted as BUCKEYE FLATS.

In witness whereof, said Buckeye LLC, a Minnesota limited liability company, has caused these presents to be signed by its proper officer this 6 day of Jan, 2016.

SIGNED: Buckeye LLC

Nathan Stencil, Chief Financial Manager

STATE OF MINNESOTA
COUNTY OF OLMSTED

This instrument was acknowledged before me on January 6, 2016 by Nathan Stencil, Chief Financial Manager of Buckeye LLC, a Minnesota limited liability company.

Sheri Ryan
Notary Public, Goodhue County, Minnesota

Sheri Ryan
Notary Printed Name

My commission expires January 31, 2018

In witness whereof, said Premier Bank Rochester, a Minnesota corporation, has caused these presents to be signed by its proper officer this 9 day of February, 2016.

SIGNED: Premier Bank Rochester

Corey R. Heimer, President

STATE OF MINNESOTA
COUNTY OF OLMSTED

This instrument was acknowledged before me on February 9, 2016 by Corey R. Heimer, President of Premier Bank Rochester, a Minnesota corporation.

Megan Scholr
Notary Public, Olmsted County, Minnesota

Megan Scholr
Notary Printed Name

My commission expires January 31, 2020

SURVEYOR'S CERTIFICATE

I Mark E. Severson do hereby certify that this plat was prepared by me or under my direct supervision; that I am a duly Licensed Land Surveyor in the State of Minnesota; that this plat is a correct representation of the boundary survey; that all mathematical data and labels are correctly designated on this plat; that all monuments depicted on this plat have been, or will be correctly set within one year; that all water boundaries and wet lands, as defined in Minnesota Statutes, Section 505.01, Subd. 3, as of the date of this certificate are shown and labeled on this plat; and all public ways are shown and labeled on this plat.

Dated this 11 day of JANUARY, 2016.

Mark E. Severson
Mark E. Severson, Professional Surveyor
Minnesota License No. 18887

STATE OF MINNESOTA
COUNTY OF OLMSTED

The instrument was acknowledged before me on January 11, 2016 by Mark E. Severson.

Tabitha Marie Walsh
Notary Public, Rice County, Minnesota

Tabitha Marie Walsh
Notary Printed Name

My commission expires January 31, 2019

OLMSTED COUNTY SURVEYOR

I hereby certify that in accordance with Minnesota Statutes, Section 505.021, Subd. 11, this plat has been reviewed and approved this 26 day of JANUARY, 2016.

Paul S. Thowson
Olmsted County Surveyor

CITY APPROVAL

STATE OF MINNESOTA
COUNTY OF OLMSTED
CITY OF ROCHESTER

I, Valori Langseth, Deputy City Clerk, in and for the City of Rochester, do hereby certify that on the _____ day of _____, 2015, the accompanying plat was duly approved by the Common Council of the City of Rochester. In testimony thereof, I have hereunto signed my name and affixed the seal of said City of Rochester this _____ day of _____, 2016.

Valori Langseth
Aaron S. Reeves, City Clerk, Deputy
Valori Langseth

PROPERTY RECORDS AND LICENSING

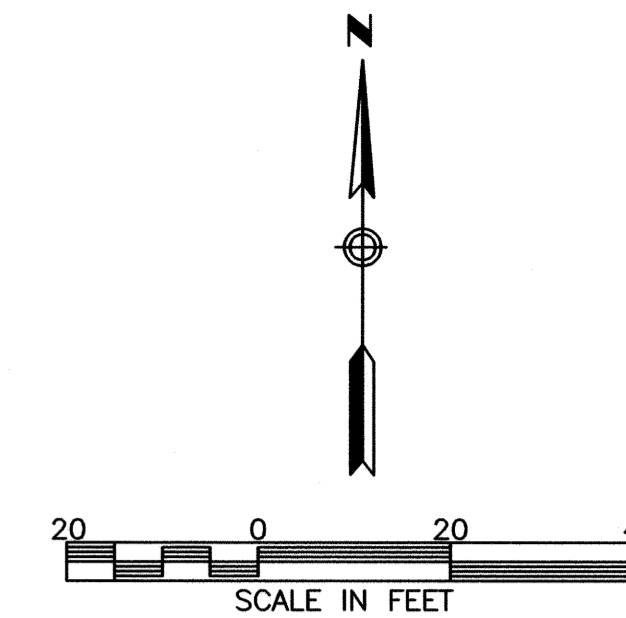
Taxes payable in the year 2016 on the land described herein have been paid, there are no delinquent taxes and transfer has been entered this 11th day of February, 2016.

DOCUMENT NUMBER A1390566

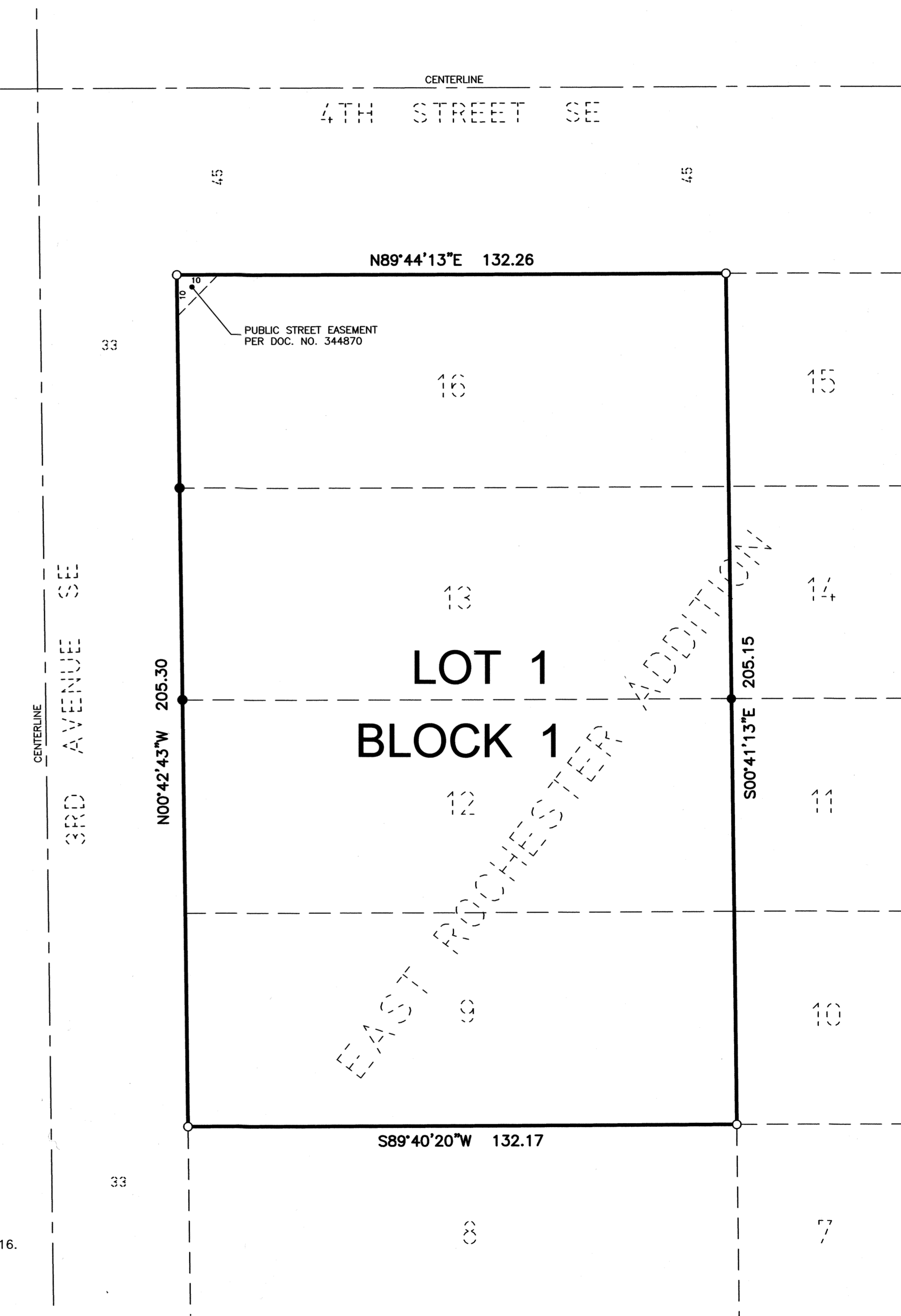
I hereby certify that this instrument was filed in the Office of Property Records and Licensing for the record on this 11th day of February, 2016, at 3 1/2 o'clock P.M., and was duly recorded in the Olmsted County records.

W. Mark Kumpaki
Director of Property Records & Licensing

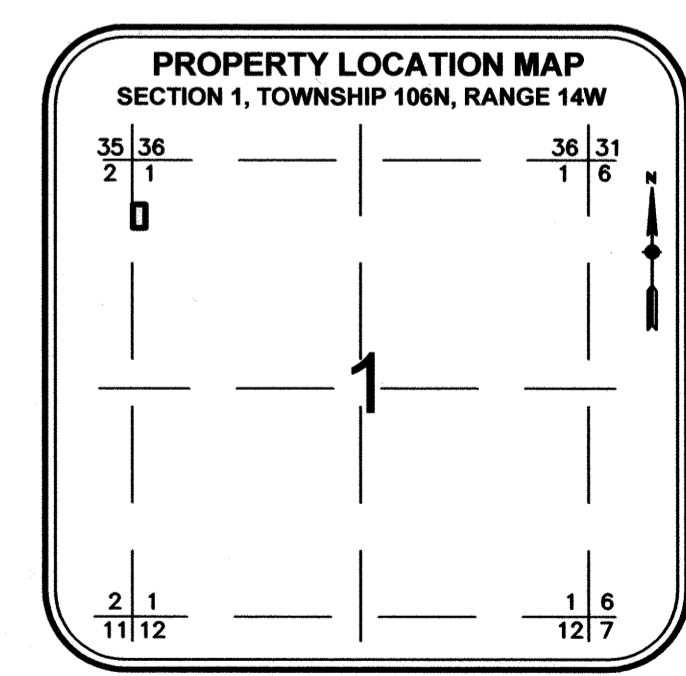
Wendy von Wald
Deputy



BASIS OF BEARING SYSTEM:
ALL BEARINGS ARE IN RELATIONSHIP WITH THE
WEST LINE OF BLOCK 1, EAST ROCHESTER
ADDITION WHICH IS ASSUMED TO BE N00°42'43"W.



NOTE:
ALL MONUMENTS SHOWN THUS: ○
ARE 5/8" I.D. CAPPED PIPES WITH LICENSE NO.
18887 WHICH WILL BE SET WITHIN 1 YEAR AFTER
RECORDING OF THIS PLAT.
ALL MONUMENTS SHOWN THUS: ●
ARE FOUND 5/8" PIPES UNLESS OTHERWISE NOTED.



1648 Third Avenue SE
Rochester, MN 55904
507-289-3919
www.wsbeng.com

1347A