

NORTHWEST COMMERCIAL CENTER FOURTH

KNOW ALL PERSONS BY THESE PRESENTS: That Northwest Investments of La Crosse LLC, a Wisconsin limited liability company, owner of the following described property:

Lot 4 and Lot 7, Block 3, NORTHWEST COMMERCIAL CENTER, in the City of Rochester, Olmsted County, Minnesota.

ALSO:

That part of Lot 3, Block 3, NORTHWEST COMMERCIAL CENTER, in the City of Rochester, Olmsted County, Minnesota, described as follows:

Beginning at the northwest corner of said Lot 3; thence South 13 degrees 18 minutes 20 seconds East, assumed bearing, along the west line of said Lot 3, a distance of 88.00 feet to the northwest corner of Outlot 1, in said NORTHWEST COMMERCIAL CENTER; thence North 76 degrees 41 minutes 40 seconds East, along the north line of said Outlot 1, 141.98 feet to the northeast corner of said Outlot 1; thence North 13 degrees 18 minutes 20 seconds West, 88.00 feet to the north line of said Lot 3; thence South 76 degrees 41 minutes 40 seconds West, along said north line, 141.98 feet to the point of beginning.

Containing in all, 2.26 acres, more or less.

Has caused the same to be surveyed and platted as NORTHWEST COMMERCIAL CENTER FOURTH.

In witness whereof, said Northwest Investments of La Crosse LLC, a Wisconsin limited liability company, has caused these presents to be signed by its proper officer this 14 day of DECEMBER, 2015.

SIGNED: Northwest Investments of La Crosse LLC

Mark S. Zietlow
Mark S. Zietlow, Member

STATE OF WISCONSIN
COUNTY OF LACROSSE

This instrument was acknowledged before me on 12-14-15 by Mark S. Zietlow, Member of Northwest Investments of La Crosse LLC, a Wisconsin limited liability company

Wendy A. Banasik
Notary Public, LACROSSE County, Minnesota WISCONSIN Notary Printed Name

My commission expires 4-12-2019

SURVEYOR'S CERTIFICATE

I Mark E. Severson do hereby certify that this plat was prepared by me or under my direct supervision; that I am a duly Licensed Land Surveyor in the State of Minnesota; that this plat is a correct representation of the boundary survey; that all mathematical data and labels are correctly designated on this plat; that all monuments depicted on this plat have been, or will be correctly set within one year; that all water boundaries and wet lands, as defined in Minnesota Statutes, Section 505.01, Subd. 3, as of the date of this certificate are shown and labeled on this plat; and all public ways are shown and labeled on this plat.

Dated this 9 day of December, 2015.

Mark E. Severson
Mark E. Severson, Professional Surveyor
Minnesota License No. 18887

STATE OF MINNESOTA
COUNTY OF OLMSTED

The instrument was acknowledged before me on December 9, 2015 by Mark E. Severson.

Heather Hanson
Notary Public, Olmsted County, Minnesota
My commission expires January 31, 2019

OLMSTED COUNTY SURVEYOR

I hereby certify that in accordance with Minnesota Statutes, Section 505.021, Subd. 11, this plat has been reviewed and approved this 23 day of DECEMBER, 2015.

Paul A. Thomson
Olmsted County Surveyor

CITY APPROVAL

STATE OF MINNESOTA
COUNTY OF OLMSTED
CITY OF ROCHESTER

I, Aaron S. Reeves, City Clerk, in and for the City of Rochester, do hereby certify that on the 16 day of November, 2015, the accompanying plat was duly approved by the Common Council of the City of Rochester. In testimony thereof, I have hereunto signed my name and affixed the seal of said City of Rochester this 21 day of December, 2015.

Aaron S. Reeves
Aaron S. Reeves, City Clerk

PROPERTY RECORDS AND LICENSING

Taxes payable in the year 2015 on the land described herein have been paid, there are no delinquent taxes and transfer has been entered this 29th day of December, 2015.

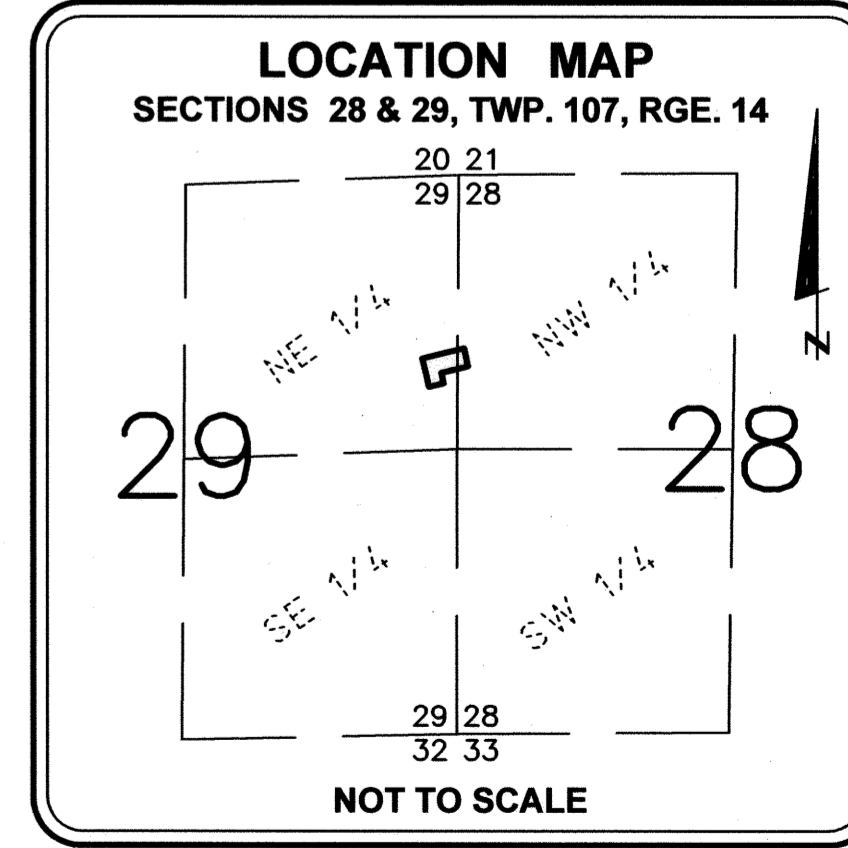
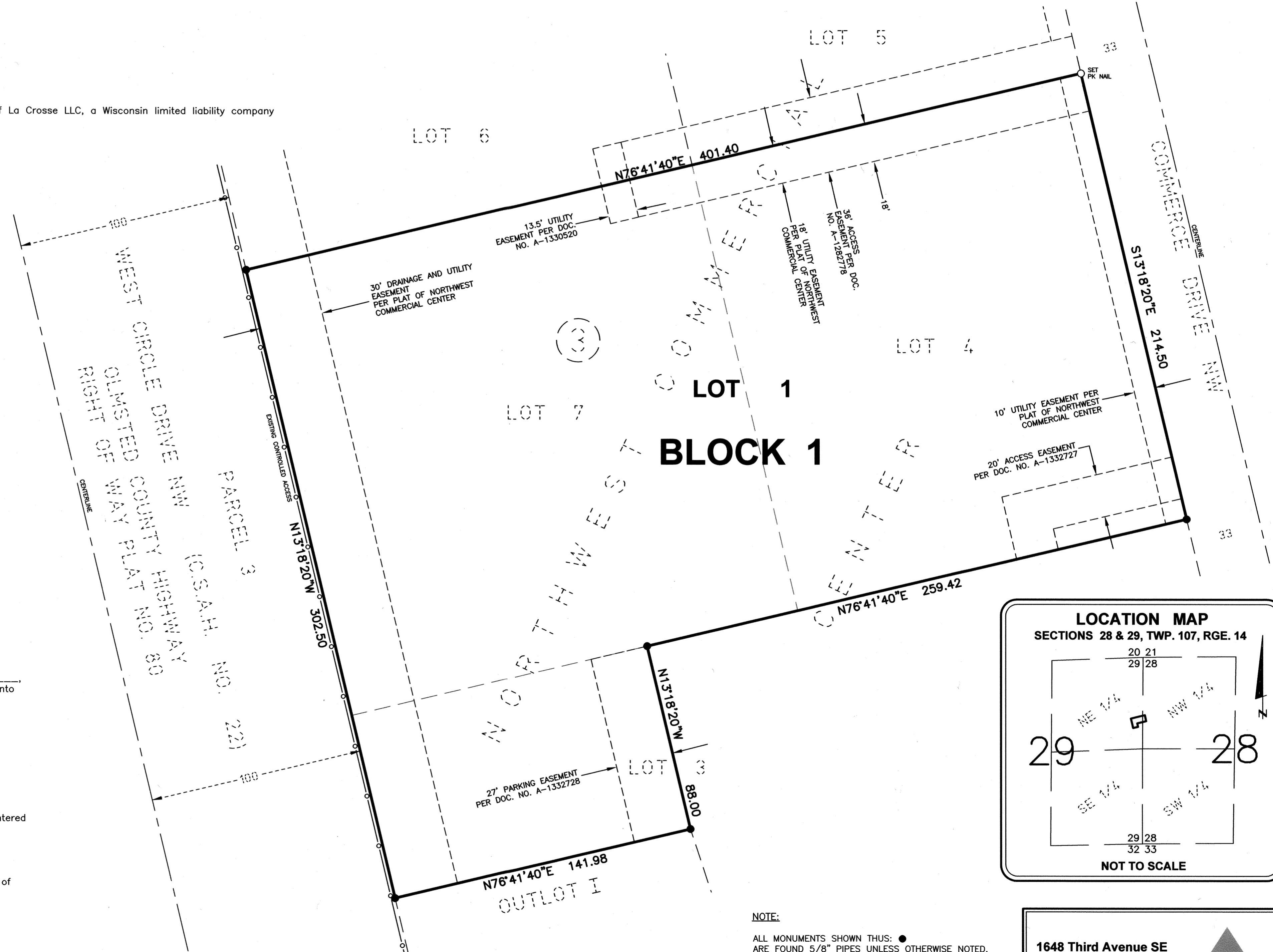
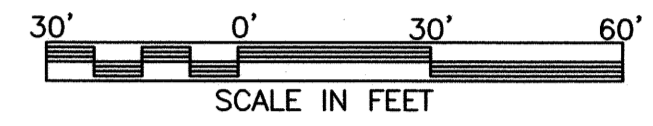
DOCUMENT NUMBER A1387866

I hereby certify that this instrument was filed in the Office of Property Records and Licensing for the record on this 29th day of December, 2015, at 11 o'clock A.M., and was duly recorded in the Olmsted County records.

W. Mark Krupski
Director of Property Records & Licensing

Wendy von Wald
Deputy

BASIS OF BEARING SYSTEM: ALL BEARINGS ARE IN RELATIONSHIP WITH THE WEST LINE OF BLOCK 3, NORTHWEST COMMERCIAL CENTER, ROCHESTER, MINNESOTA, WHICH IS ASSUMED TO BE NORTH 13 DEGREES 18 MINUTES 20 SECONDS WEST.



NOTE:
ALL MONUMENTS SHOWN THUS: ●
ARE FOUND 5/8" PIPES UNLESS OTHERWISE NOTED.

1648 Third Avenue SE
Rochester, MN 55904
507-289-3919
www.wsbg.com

1343A