

NORTH ORCHARD PARK SECOND SUBDIVISION

INSTRUMENT OF DEDICATION

KNOW ALL MEN BY THESE PRESENTS: That Billman-Orr Enterprises, LLC a Minnesota Limited Liability Corporation being the owner and proprietor and ~~Beames-Bank, a Minnesota Corporation, f/k/a Eastwood-Bank, mortgagee~~, of the following described property situated in the County of Olmsted State of Minnesota to wit:

All of Lots 4 and 5, Block 3, NORTH ORCHARD PARK SUBDIVISION, according to the plat thereof on file in the County Recorder's Office, Olmsted County.

Containing 1.03 acres more or less.

Have caused the same to be surveyed and platted as NORTH ORCHARD PARK SECOND SUBDIVISION.

In witness whereof, said Billman-Orr Enterprises, LLC has caused these presents to be signed by its proper officers this 21 day of Oct 2015

By [Signature] Its President

STATE OF MINNESOTA
COUNTY OF OLMSTED

The foregoing instrument was acknowledged before me this 21 day of October 2015 by Cheryl A. Smith

[Signature]
Notary Public, Olmsted County, MN
My Commission Expires 1-31-17

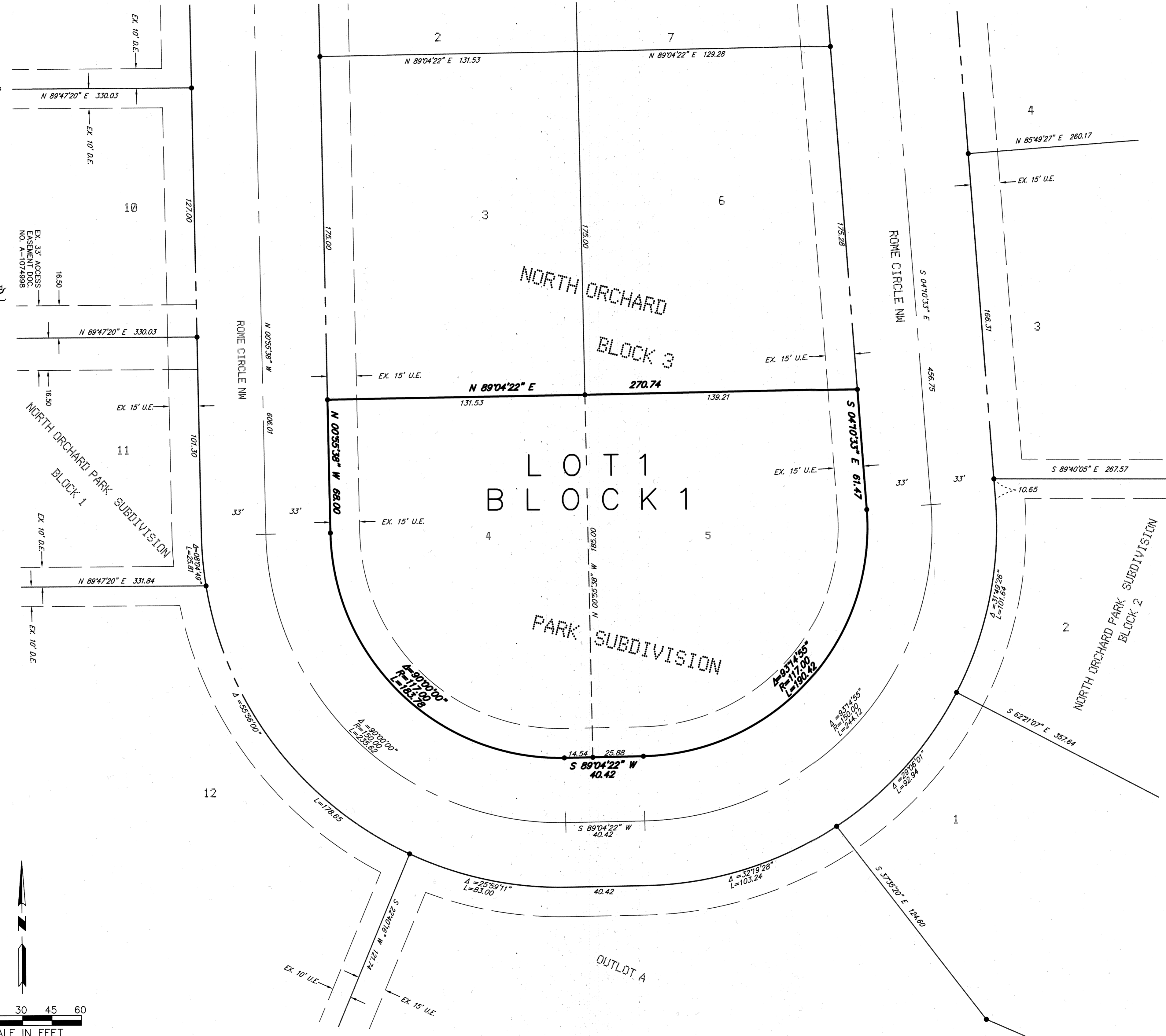
~~In witness whereof, ~~Beames-Bank, a Minnesota Corporation, f/k/a Eastwood Bank~~ has caused these presents to be signed by its proper officers this ___ day of ___ by ___~~

~~By ___ Its ___~~

~~STATE OF MINNESOTA
COUNTY OF OLMSTED~~

~~The foregoing instrument was acknowledged before me this ___ day of ___ by ___~~

~~Notary Public, Olmsted County, MN
My Commission Expires ___~~



PROPERTY RECORDS AND LICENSING

Taxes payable in the year 2015 on the land herein described have been paid, there are no delinquent taxes and transfer has been entered this 23 day of October, 2015.

DOCUMENT NUMBER: A1383569

I hereby certify that this instrument was filed in the Office of Property Records and Licensing for the record on this 23 day of October, 2015 at 2 o'clock P.M., and was duly recorded in the Olmsted County Records.

W. Mark Krupski
Director of Property Records & Licensing
by Wendy von Wald
Deputy

CITY APPROVAL

STATE OF MINNESOTA
COUNTY OF OLMSTED
CITY OF ROCHESTER
I, Aaron S. Rea City Clerk, in and for the City of Rochester, do hereby certify that on the 21 day of October, 2015, the accompanying plat was duly approved by the Common Council of the City of Rochester. In testimony whereof, I have hereunto signed my name and affixed the seal of said City of Rochester, this 23 day of October, 2015.

Aaron S. Rea
City Administrator

COUNTY SURVEYOR

I certify that this plat has been checked mathematically and that the plat conforms to applicable plating laws.

This 20 day of OCTOBER, 2015
Paul S. Johnson
Olmsted County Surveyor

SURVEYOR'S CERTIFICATE

I do hereby certify that I have surveyed and platted the property described on this plat as NORTH ORCHARD PARK SECOND SUBDIVISION; that this plat is a correct representation of the boundary survey; that all mathematical data and labels are correctly designated on the plat; that all monuments depicted on the plat have been correctly set as indicated on the plat; that all water boundaries or wet lands as defined in MS 505.02, SUBD. 1, Subd. 3, existing as of the date of this certification are shown and labeled on the plat; and that all public ways are shown and labeled on the plat.

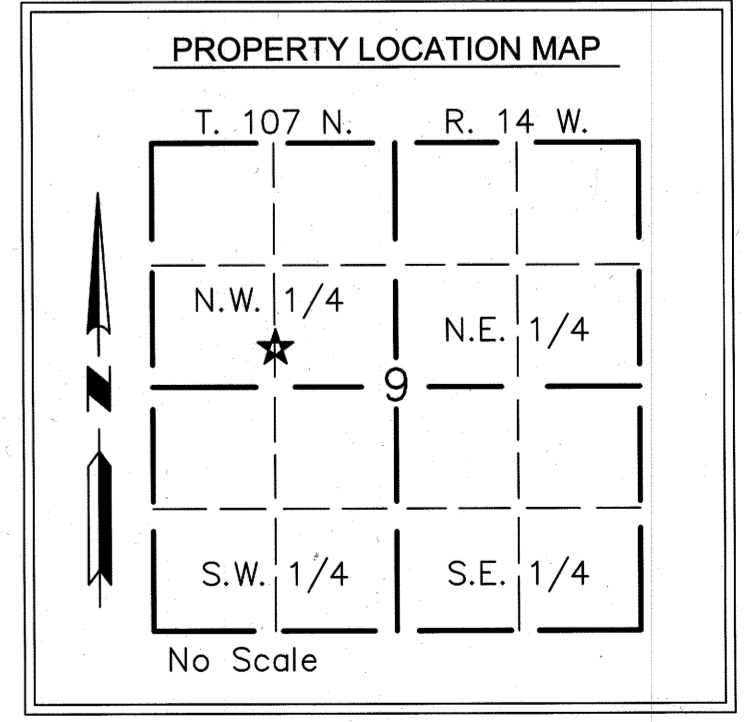
Dated this 13 day of October, 2015
Richard J. Massey
Minnesota L.S. No. 41814

STATE OF MINNESOTA COUNTY OF OLMSTED

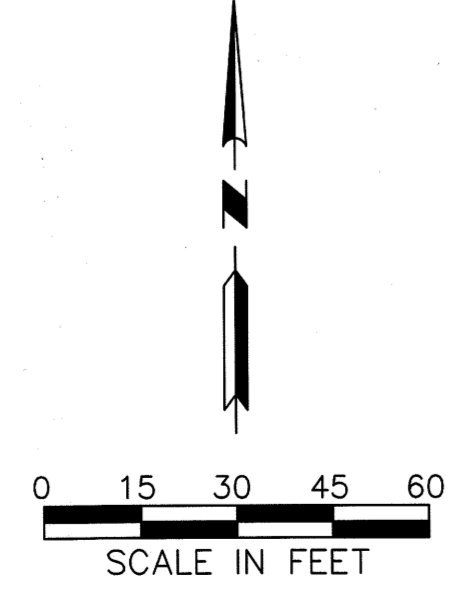
The foregoing Surveyor's Certificate was acknowledged before me this 13 day of October, 2015, by Richard J. Massey, L.S. No. 41814.

Ginny A. Smith
Notary Public
My Commission Expires 11/31/2016

Ginny A. Smith
Notary Public, Olmsted County, MN
My Commission Expires 11/31/2016



- MONUMENTS
- SET (5/8" PIPE UNLESS NOTED OTHERWISE)
 - Found Monuments (AS INDICATED)



UTILITY EASEMENT DEFINED
An unobstructed easement for the construction and maintenance of all necessary overhead, underground or surface public utilities, including rights to conduct drainage and trimming on said easement.
EX. U.E. = EXISTING UTILITY EASEMENT

BASIS OF BEARINGS
All Bearings are in relationship with the Olmsted County Coordinate System NAD '83, Adjusted 1996.

1338A

MASSEY
LAND SURVEYING & ENGINEERING
P.O. BOX 100, KASSON, MN 55944
PH. NO. 507-634-4505, FAX NO. 507-634-8560

PROJECT NUMBER: 2338
COMPUTER FILE: 2338SF01
DATE: 8/27/2015