

# FLEET FARM ADDITION SECOND

### INSTRUMENT OF DEDICATION

KNOW ALL PERSONS BY THESE PRESENTS: That Mills Properties, Inc., a Wisconsin corporation, owner and proprietor of the following described property situated in the County of Olmsted, State of Minnesota, to-wit:

That part of Lot 1, Block 3, FLEET FARM ADDITION TO ROCHESTER, according to the plat thereof on file at the County Recorder's office, Olmsted County, State of Minnesota, described as follows:

Beginning at the northeast corner of Outlot A, said FLEET FARM ADDITION TO ROCHESTER; thence South 89 degrees 51 minutes 16 seconds East along the north line of said Lot 1 a distance of 515.09 feet; thence South 45 degrees 03 minutes 26 seconds East along the northeast line of said Lot 1 a distance of 141.92 feet; thence South 00 degrees 15 minutes 35 seconds East along the east line of said Lot 1 a distance of 190.49 feet; thence North 89 degrees 44 minutes 25 seconds East along said east line 10.00 feet; thence South 00 degrees 15 minutes 35 seconds East along said east line 88.83 feet; thence South 89 degrees 44 minutes 25 seconds West a distance of 276.71 feet; thence South 56 degrees 24 minutes 45 seconds West a distance of 466.69 feet; thence southwesterly 84.53 feet along a tangential curve concave southeasterly, having a radius of 200.00 feet and a central angle of 24 degrees 12 minutes 58 seconds; thence South 32 degrees 11 minutes 47 seconds West a distance of 23.06 feet to the southwesterly line of said Lot 1; thence northwesterly 524.15 feet on a non-tangential curve concave northeasterly, having a radius of 505.00 feet, a central angle of 59 degrees 28 minutes 05 seconds and a chord, which bears North 29 degrees 35 minutes 18 seconds West; thence North 00 degrees 08 minutes 44 seconds East along the west line of said Lot 1 a distance of 20.00 feet to the south line of said Outlot A; thence South 89 degrees 46 minutes 15 seconds East along said south line a distance of 119.10 feet; thence North 56 degrees 24 minutes 45 seconds East along the southeast line of said Outlot A a distance of 285.08 feet; thence North 00 degrees 08 minutes 44 seconds East along the east line of said Outlot A a distance 106.99 feet to the point of beginning.

Said tract contains 9.51 acres more or less.

Has caused the same to be surveyed and platted as FLEET FARM ADDITION SECOND, and does hereby dedicate to the public for public use the easements as created by this plat for utility and drainage purposes only.

IN WITNESS WHEREOF, said Mills Properties, Inc., a Wisconsin corporation, has caused these presents to be signed by its proper officers this 26 day of August, 2015.

Mills Properties, Inc.

Stewart C. Mills Jr.  
Stewart C. Mills, Jr.  
Co-President / Secretary

Henry C. Mills II  
Henry C. Mills, II  
Co-President / Treasurer

STATE OF MINNESOTA  
COUNTY OF Blue Earth

The foregoing instrument was acknowledged before me this 26 day of August, 2015, by Stewart C. Mills, Jr.

M Watkins  
Notary Signature  
MORIKIA WATKINS  
Notary Printed Name  
Notary Public Rice, Minnesota  
My Commission Expires: 01/31/2018

STATE OF WISCONSIN  
COUNTY OF Outagamie

The foregoing instrument was acknowledged before me this 25th day of August, 2015, by Henry C. Mills II.

Diana J. Schultz  
Notary Signature  
Diana J. Schultz  
Notary Printed Name  
Notary Public State of Wisconsin  
My Commission Expires: January 21, 2016

### SURVEYOR'S CERTIFICATE

I, Peter G. Oetliker, do hereby certify that this plat was prepared by me or under my direct supervision; that I am a duly Licensed Land Surveyor in the State of Minnesota; that this plat is a correct representation of the boundary survey; that all mathematical data and labels are correctly designated on this plat; that all monuments depicted on this plat have been, or will be correctly set by July 1, 2018; that all water boundaries and wet lands, as defined in Minnesota Statutes, Section 505.01, Subd. 3, as of the date of this certificate are shown and labeled on this plat; and all public ways are shown and labeled on this plat.

Dated this 26th day of August, 2015.

Peter G. Oetliker  
Peter G. Oetliker, Land Surveyor  
Minnesota License No. 41887

STATE OF MINNESOTA  
COUNTY OF OLMSTED

This instrument was acknowledged before me this 26 day of August, 2015, by Peter G. Oetliker.

M Watkins  
Notary Signature  
MORIKIA WATKINS  
Notary Printed Name  
Notary Public Rice, Minnesota  
My Commission Expires: 01/31/2018

STATE OF MINNESOTA  
COUNTY OF OLMSTED  
CITY OF ROCHESTER

I, Aaron S. Reeves, City Clerk in and for the City of Rochester, do hereby certify that on the 20 day of July, 2015, the accompanying plat was duly approved by the Common Council of the City of Rochester. In testimony whereof, I have hereunto signed my name and affixed the Seal of said City of Rochester this 1 day of September, 2015.

Aaron S. Reeves  
Aaron S. Reeves  
City Clerk  
City of Rochester

### COUNTY SURVEYOR

I certify that this plat has been checked mathematically and that the plat conforms to applicable platting laws.

This 4 day of SEPTEMBER, 2015.

Carl Johnson  
Olmsted County Surveyor

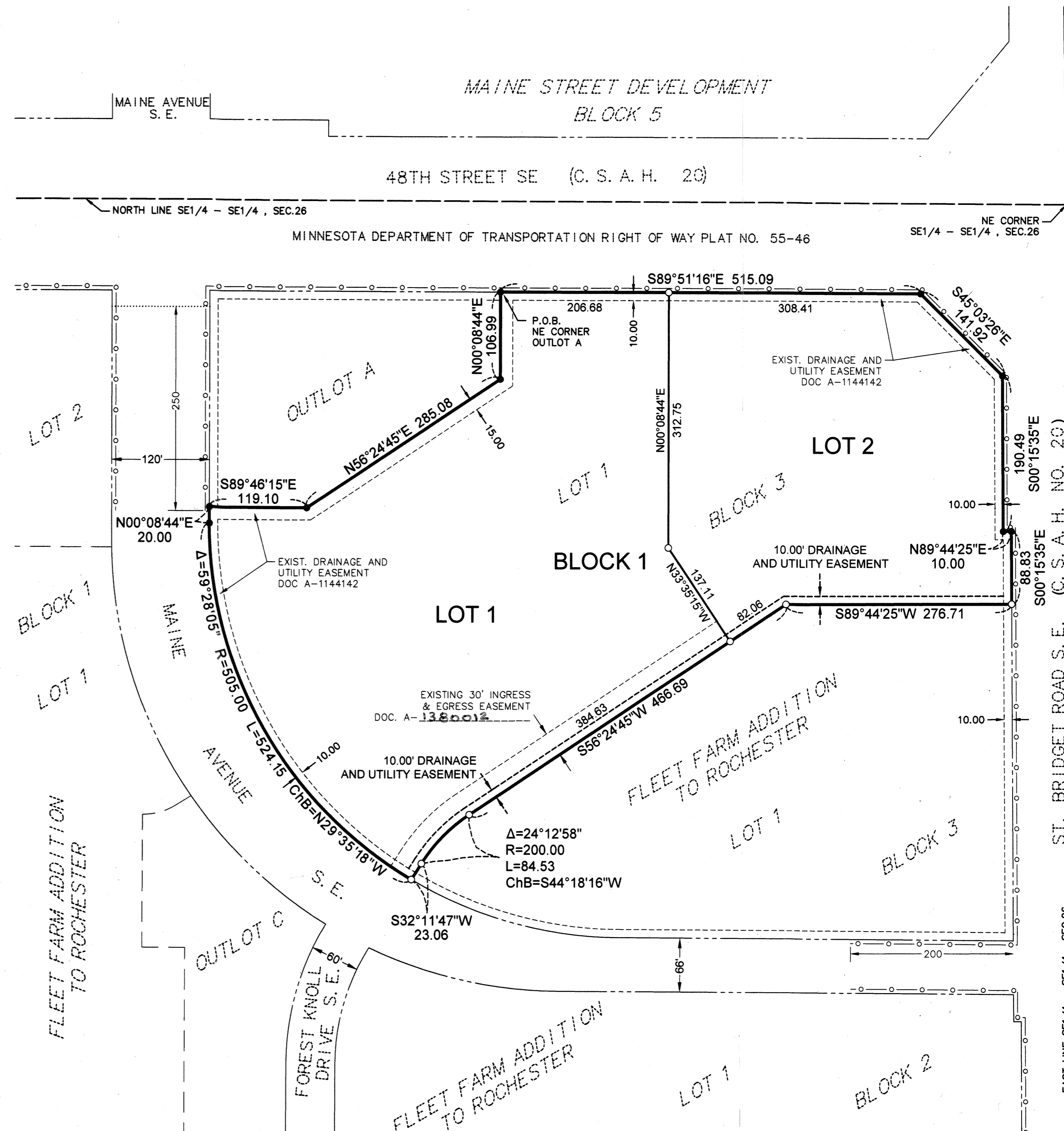
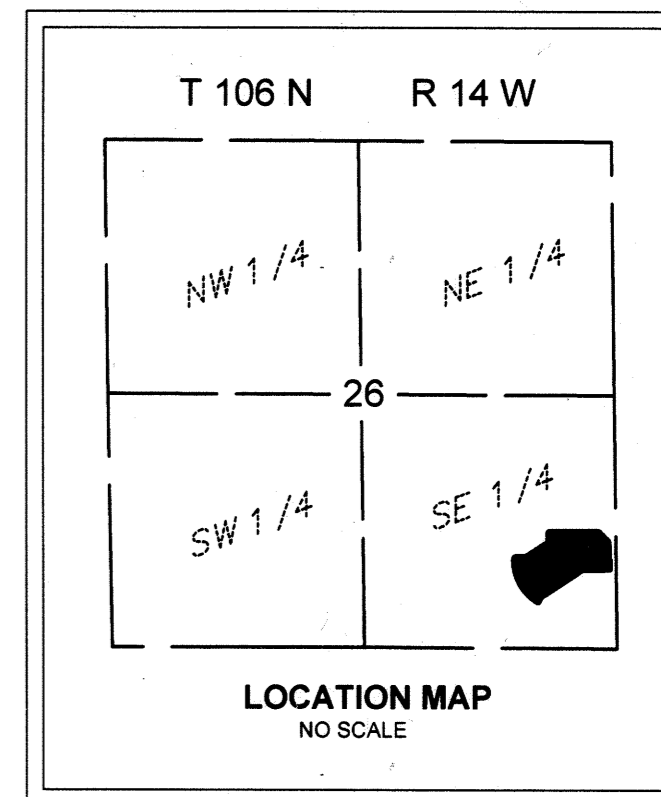
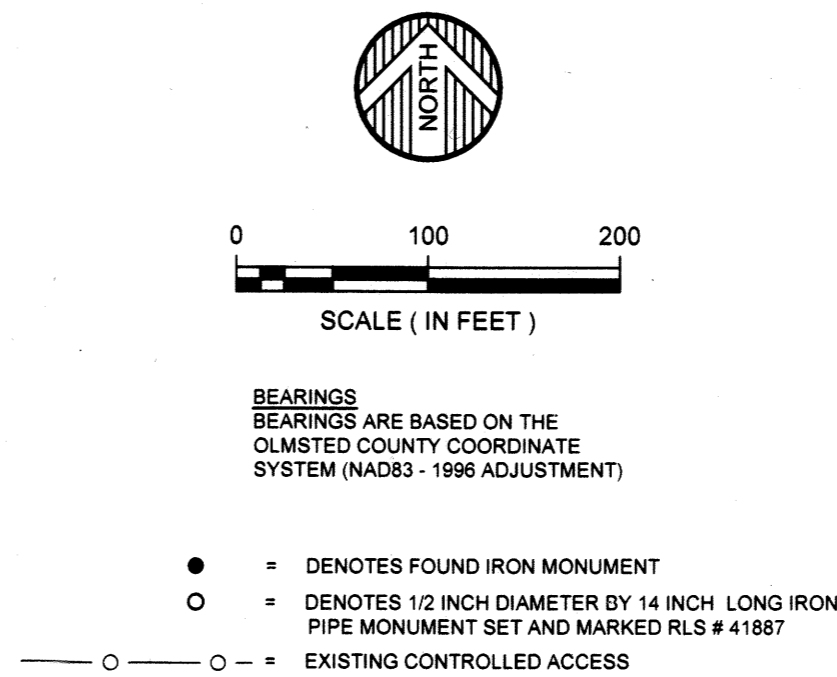
### PROPERTY RECORDS AND LICENSING

Taxes payable in the year 2015 on the land herein described have been paid, there are no delinquent taxes and transfer has been entered this 2th day of Sept., 2015.

Document Number A1380013

I hereby certify that this instrument was filed in the Office of Property Records and Licensing for the record on this 2th day of Sept., 2015, at 3 o'clock P.M. and was duly recorded in the Olmsted County Records.

W. Mark Krupski  
Olmsted County Director of Property  
Records and Licensing  
By Wendy von Wald Deputy



1331A