

# SUK'S REPLAT

ROCHESTER, MINNESOTA

## SURVEYOR'S CERTIFICATE

I, K.M. McGhie, Registered Civil Engineer and Land Surveyor, do hereby certify that at the request of Charles G. Suk, I have surveyed and platted into lots and easements as shown on the accompanying plat on which this certificate is written and shall be known and designated as **SUK'S REPLAT** the following described tract of land:

Lots 3, 4, 5, and 6 of Block 22 of Head and McMahon's Addition to the City of Rochester, and the vacated alley running north and south in said Block 22, and that part of the vacated 8<sup>th</sup> Street Southwest formerly known as Minnesota Street the entire tract being described by metes and bounds as follows:

Beginning at the northeast corner of said Block 22, thence north along the west line of 7<sup>th</sup> Avenue Southwest a distance of 20.0 feet, thence west parallel to the north line of Block 22 a distance of 138.68 feet thence north parallel with the west line of 7<sup>th</sup> Avenue Southwest a distance of 55.0 feet to the south line of Block 23 of said Addition, thence west along the south line of Block 23 a distance of 67.59 feet, thence south parallel with the west line of 7<sup>th</sup> Avenue Southwest a distance of 37.5 feet, thence west parallel to the south line of Block 23 a distance of 49.6 feet, thence south at a deflection angle of 90 degrees, 50 minutes to the left from the previous course a distance of 37.5 feet to the northwest corner of Lot 3, of Block 22, thence continue south on the previous described course a distance of 185.0 feet to the south line of Block 22, thence east along the south line of Block 22 a distance of 255.60 feet to the southeast corner of Block 22, thence north along the east line of Block 22 a distance of 147.0 feet to the place of beginning.

And I further certify that the said plat is a true and correct record of the survey and that all distances are correctly shown in feet and decimals of feet, that monuments (iron pins) for the guidance of future surveys have been placed on the ground as shown thus (o), that the outside boundaries are correctly shown on the plat, that there are no wet lands thereon and that said plat has not been previously platted except as Block 22 of Head & McMahon's Addition.  
Dated this 24<sup>th</sup> day of February, 1961 A.D.

*K.M. McGhie*

K.M. McGhie, Registered Civil Engineer & Land Surveyor Reg. #1613

Subscribed and sworn before me a notary public this 24<sup>th</sup> day of February, 1961 A.D.  
My commission expires February 22, 1967 A.D.

*James J. Craig*

Notary Public, Olmsted County, Minnesota

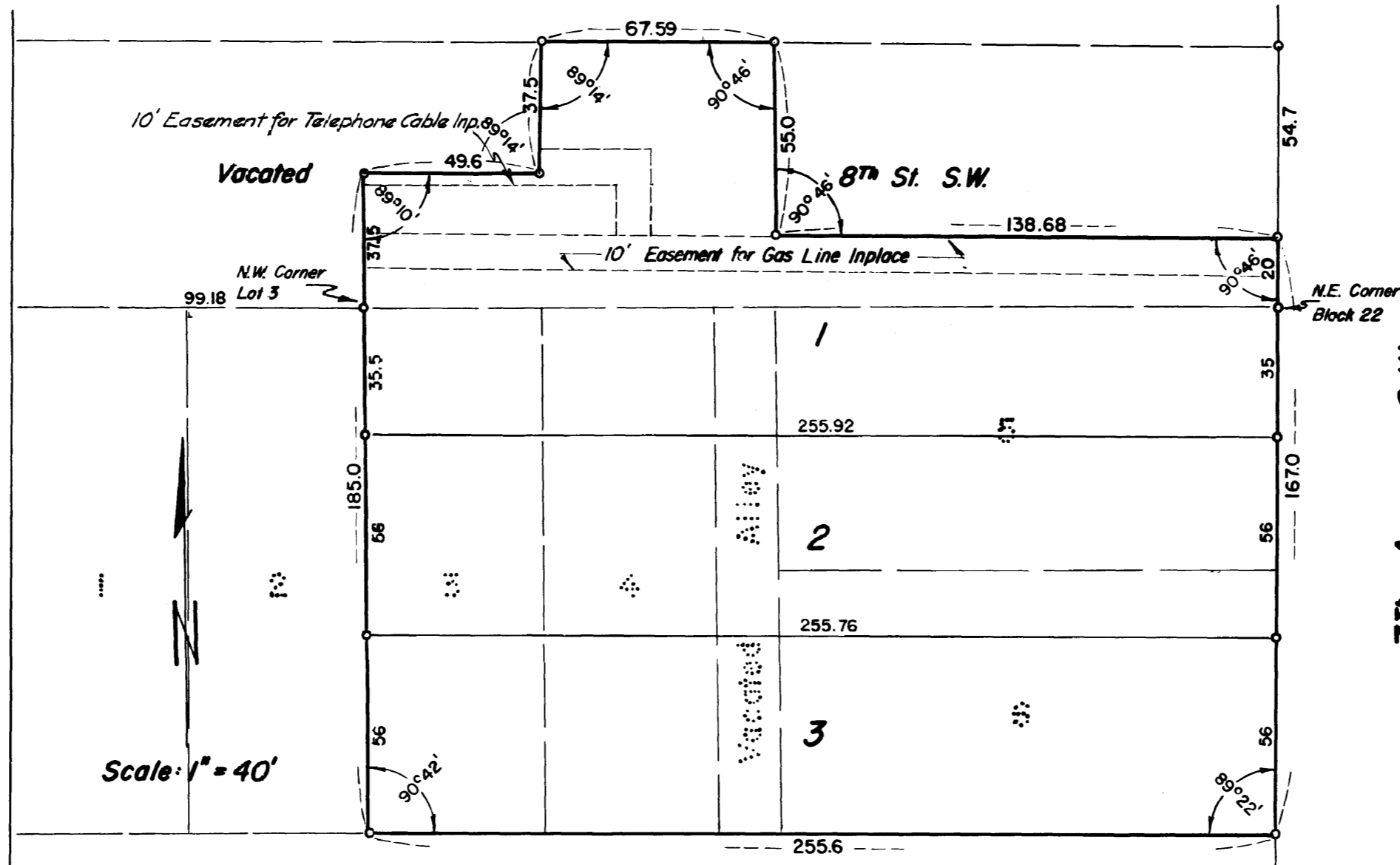
Taxes paid and transfer entered this 17<sup>th</sup> day of April, 1961 A.D.

*Paul Brauning*  
County Auditor

Taxes for the year 1960 on the lands described within are paid.

*Earl H. Probst*  
County Treasurer  
Eileen Morgan, Secretary

BLOCK 23  
HEAD & McMAHON'S ADD.



BLOCK 22  
WILLIAMS, HEALY & CORNFORTH'S ADDITION

## DEDICATION

We the undersigned certify that we are the sole interested parties in the tract of land described in the foregoing Surveyor's Certificate which is written on the plat on which this instrument is written, that we have caused the same to be platted into lots and grant easements under the name of **SUK'S REPLAT** as shown on the accompanying plat on which this instrument is written.

In the presence of:

Signed by:

*Harold J. Walker*

*Charles G. Suk*  
Charles G. Suk

*Jerry O. Judge*

*Mildred A. Suk*  
Mildred A. Suk

*Snell T. Arnold*

*Roxie G. Forman*  
Roxie G. Forman

*Donald H. Tjebkes*

*Frances G. McClure*  
Frances McClure

State of Minnesota } s.s.  
County of Olmsted }

On this 24<sup>th</sup> day of February, 1961 A.D. before me a notary public in and for said county, personally appeared Charles G. Suk and Mildred R. Suk his wife, to me known to be the persons described in and who executed the foregoing instrument and acknowledged that they executed the same as their free act and deed.

My commission expires February 20, 1967.

*James J. Craig*  
Notary Public, Olmsted County, Minnesota

State of Minnesota } s.s.  
County of Olmsted }

On this 24<sup>th</sup> day of February, 1961 A.D. before me a notary public in and for said county, personally appeared Frances McClure, Attorney in fact for Roxie G. Forman, to me personally known and acknowledged that she executed and signed the foregoing instrument as her free act and deed for Roxie G. Forman.

My commission expires February 22, 1967.

*James J. Craig*  
Notary Public, Olmsted County, Minnesota

State of Minnesota } s.s.  
County of Olmsted }

Filed for record this 12<sup>th</sup> day of April, 1961 A.D. at 12 o'clock — M.  
in book \_\_\_\_\_ of plats on page \_\_\_\_\_ Instrument No. \_\_\_\_\_

*Wm. J. Evans*  
Registrar of Deeds

State of Minnesota }  
County of Olmsted } s.s.  
City of Rochester }

I, Elfreda Reiter, City Clerk in and for said City of Rochester do hereby certify that on the 3<sup>rd</sup> day of April, 1961 A.D. the accompanying and annexed plat was duly approved by the Common Council of the City of Rochester. In testimony whereof I have here unto signed my name and affixed the seal of said City of Rochester this 4<sup>th</sup> day of April, 1961 A.D.

*Elfreda Reiter*  
City Clerk