

OFFICIAL PLAT

DIAMOND RIDGE TWELVE

UNPLATTED

SURVEYOR'S CERTIFICATE

I hereby certify that I have surveyed and platted the property described on this plat as DIAMOND RIDGE TWELVE; that this plat is a correct representation of the survey; that all distances are correctly shown on the plat in feet and hundredths of a foot; that all monuments have been correctly placed in the ground as shown; that the outside boundary lines are correctly designated on the plat; and that there are no wet lands as defined in MS 505.02, Subd. 1, or public highways to be designated other than as shown.

James E. Swanson
James E. Swanson, L.S.
Minnesota License No. 11622

State of Minnesota
County of Olmsted Dodge

The surveyor's certificate was subscribed and sworn to before me, a Notary Public, this 10th day of June, 1998.

Beth Davis
Notary Public, Olmsted County, Minnesota
My commission expires 1-31-2000

COUNTY SURVEYOR

I certify that this plat has been checked mathematically, and that the plat conforms to the applicable laws, this 10th day of June, 1998.

Edward P. Kusile
County Surveyor

TAX STATEMENTS

Taxes due and payable in the year 1998 on the land herein described have been paid, there are no delinquent taxes and transfer has been entered this 22nd day of June, 1998.

Bob Ryan
Olmsted County Auditor/Treasurer

By Danigan Gibson Deputy

CITY APPROVAL

State of Minnesota
County of Olmsted
City of Rochester

I, Judy K. Scherr, City Clerk, in and for the City of Rochester, do hereby certify that on the 10th day of June, 1998, the accompanying plat was duly approved by the Common Council of the City of Rochester. In testimony thereof I have hereunto signed my name and affixed the seal of said City of Rochester this 10th day of June, 1998.

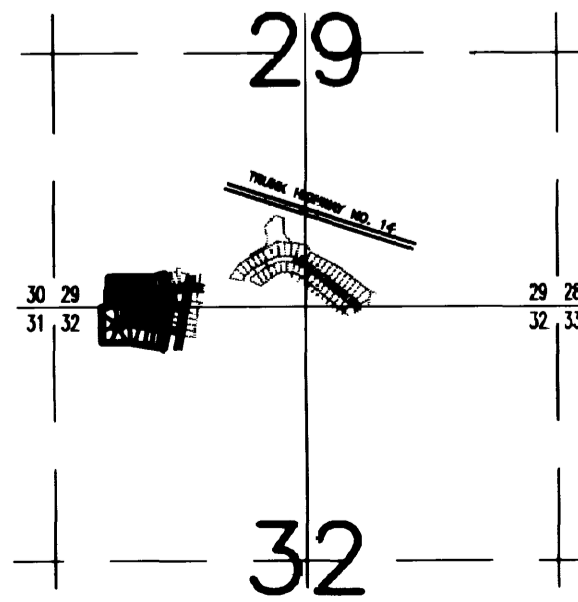
Judy K. Scherr, City Clerk

COUNTY RECORDER 782813
DOCUMENT NUMBER 782813

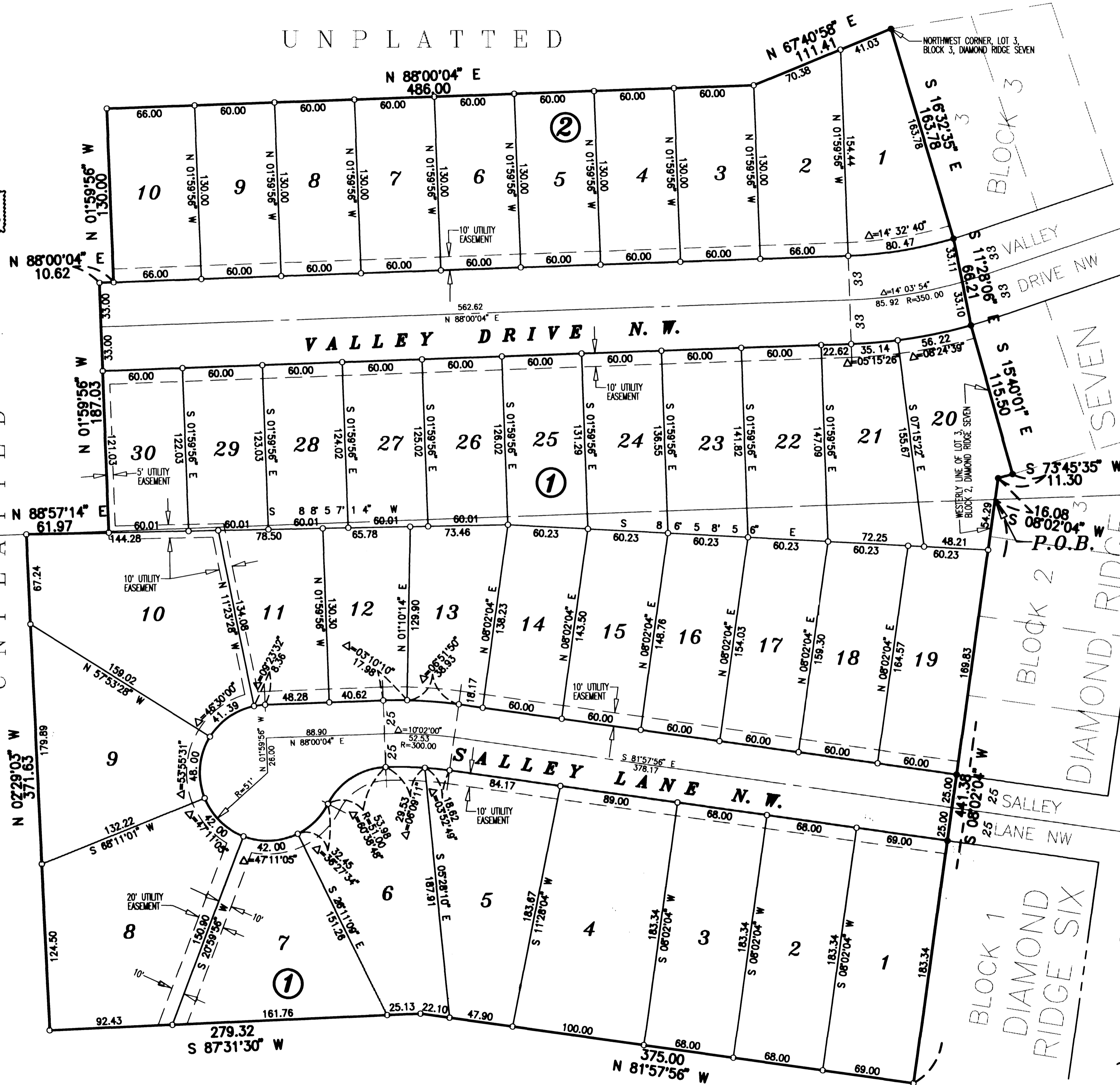
I hereby certify that this instrument was filed in the office of the County Recorder for record on this 10th day of June, 1998, at 2 o'clock P.M. and was duly recorded in the Olmsted County records.

Daniel J. Huel
County Recorder
Deputy

PROPERTY LOCATION MAP



UTILITY EASEMENT defined: An unobstructed easement for the construction and maintenance of all necessary underground and surface public utilities including rights to conduct drainage and trimming on said easement.



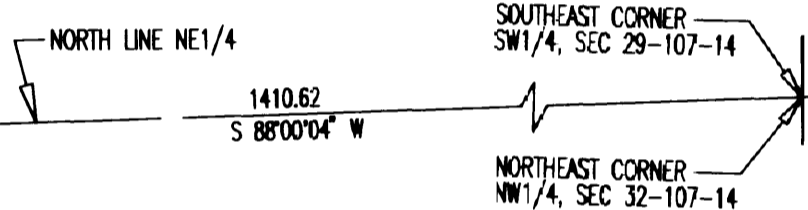
INSTRUMENT OF DEDICATION

KNOW ALL MEN BY THESE PRESENTS: That Western Walls, Inc., a Minnesota Corporation, owner and proprietor of the following described property situated in the City of Rochester, County of Olmsted, State of Minnesota, to wit:

That part of the Northwest Quarter of Section 32 and that part of the Southwest Quarter of Section 29, all in Township 107 North, Range 14 West, Olmsted County, Minnesota, described as follows:

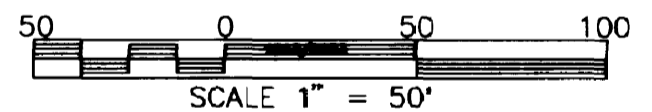
Commencing at the northeast corner of the Northwest Quarter of said Section 32; thence South 86 degrees 00 minutes 04 seconds West, assumed bearing, along the north line thereof, 1410.62 feet to the westerly line of Lot 3, Block 2, DIAMOND RIDGE SEVEN for the point of beginning; thence South 08 degrees 02 minutes 04 seconds West, along the westerly line of said Block 2, a distance of 441.38 feet; thence North 81 degrees 57 minutes 56 seconds West, 375.00 feet; thence South 87 degrees 31 minutes 30 seconds West, 279.32 feet; thence North 02 degrees 29 minutes 03 seconds West, 371.63 feet; thence North 88 degrees 57 minutes 14 seconds East, 61.97 feet; thence North 01 degree 59 minutes 56 seconds West, 187.03 feet; thence North 88 degrees 00 minutes 04 seconds East, 10.62 feet; thence North 01 degree 59 minutes 56 seconds West, 130.00 feet; thence North 88 degrees 00 minutes 04 seconds East, 486.00 feet; thence North 07 degrees 40 minutes 58 seconds East, 111.41 feet to the northwest corner of Lot 3, Block 3 in said DIAMOND RIDGE SEVEN (the next five courses are along the westerly line of said DIAMOND RIDGE SEVEN); thence South 16 degrees 32 minutes 35 seconds East, 163.76 feet; thence South 11 degrees 28 minutes 06 seconds East, 66.21 feet; thence South 15 degrees 40 minutes 01 second East, 115.50 feet; thence South 73 degrees 45 minutes 35 seconds West, 11.30 feet; thence South 08 degrees 02 minutes 04 seconds West, 16.08 feet to the point of beginning.

Containing 10.90 acres more or less.



NOTE: ALL MONUMENTS SHOWN THUS: O ARE 5/8" I.D. CAPPED PIPES SET WITH REGISTRATION NO. 11622. ALL MONUMENTS SHOWN THUS: ● ARE FOUND 5/8" PIPES.

BASIS OF BEARING SYSTEMS: ALL BEARINGS ARE IN RELATIONSHIP WITH THE SOUTH LINE S.W. 1/4, SEC 29, WHICH IS ASSUMED TO BE S 88°00'04" W.



have caused the same to be surveyed and platted as DIAMOND RIDGE TWELVE and do hereby dedicate to the public for the public use forever, the thoroughfare and cul-de-sac, and also grant the easements as shown on this plat for drainage and utility purposes only.

In witness whereof said Western Walls, Inc., a Minnesota Corporation, has caused these presents to be signed by its proper officer this 10th day of June, 1998.

Robert D. DeWitz, President

State of Minnesota
County of Olmsted Dodge

The foregoing instrument was acknowledged before me this 10th day of June, 1998, by Robert D. DeWitz, President, on behalf of the Corporation.

Beth Davis
Notary Public, Olmsted County, Minnesota
My commission expires 1-31-2000

PREPARED BY: MCGHEE & BETTS, INC. CONSULTING ENGINEERS PLANNERS, LAND SURVEYORS ROCHESTER, MINNESOTA