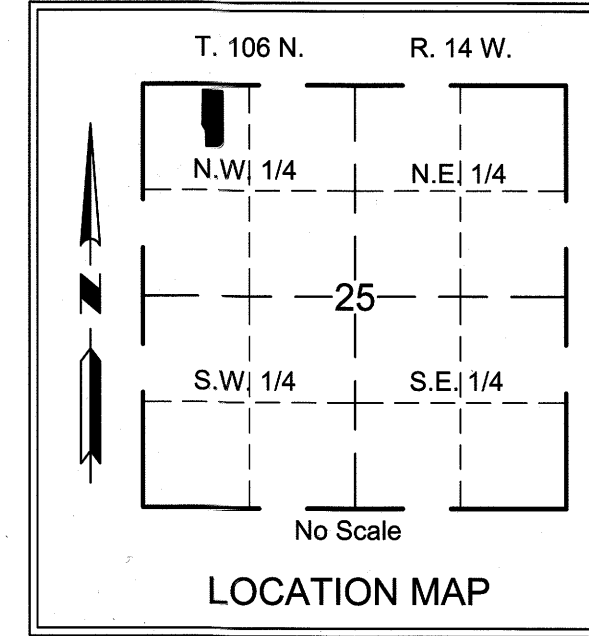
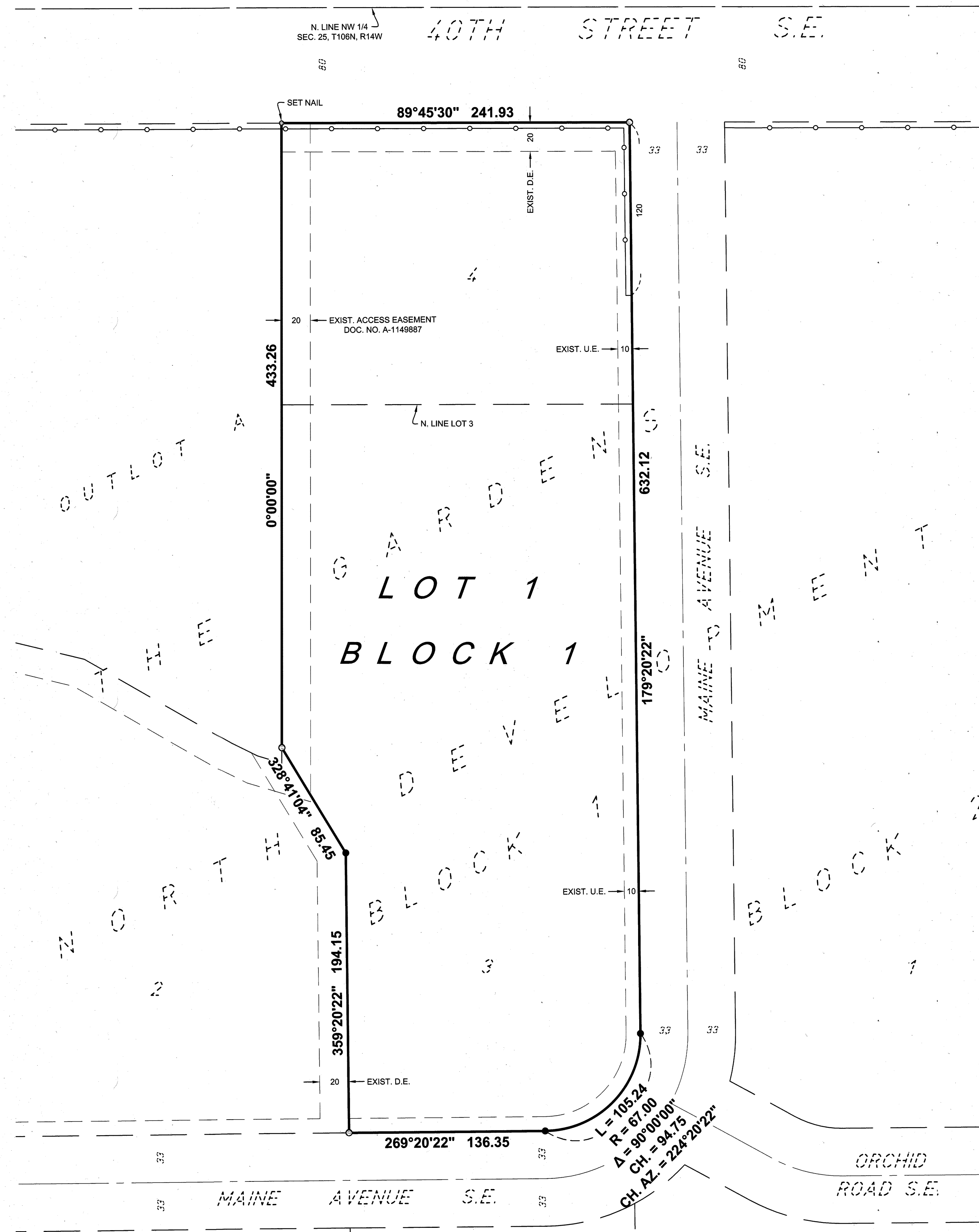


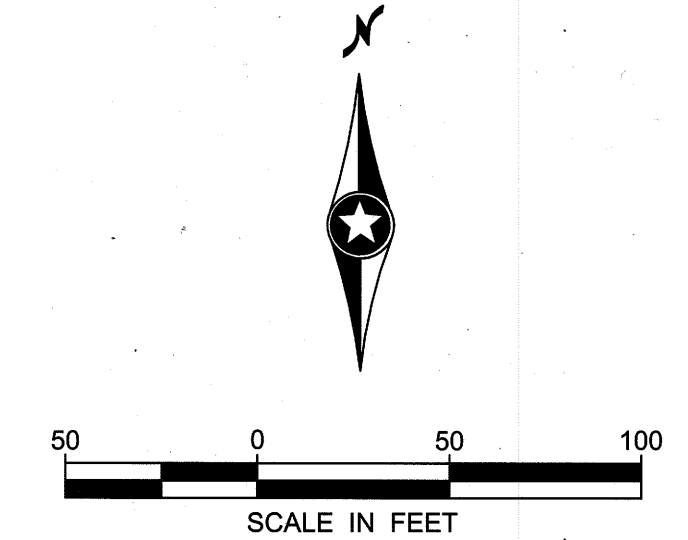
# THE GARDENS NORTH DEVELOPMENT FIFTH

UNPLATTED



### LEGEND

- DENOTES 3/4 INCH BY 18 INCH IRON PIPE SET AND MARKED BY LICENSE NO. 47034 UNLESS OTHERWISE NOTED.
- DENOTES IRON MONUMENT FOUND
- U.E. DENOTES UTILITY EASEMENT
- D.E. DENOTES DRAINAGE EASEMENT



ORIENTATION OF THIS AZIMUTH SYSTEM IS BASED ON THE OLMSTED COUNTY COORDINATE SYSTEM, (NAD 83-1986 ADJ.) MEASURED CLOCKWISE FROM 00°00'00\"/>

### CONTROLLED ACCESS DEFINED

INGRESS AND EGRESS TO, FROM OR ACROSS THE ABUTTING ROADWAY IS RESTRICTED BY THE ROAD AUTHORITY PURSUANT TO MINNESOTA STATUTE 160.08.

○—○ DENOTES CONTROLLED ACCESS

### INSTRUMENT OF DEDICATION

KNOW ALL PERSONS BY THESE PRESENTS: That Bascom Capital LLC, an Illinois limited liability company, owner of the following described property:

Lots 3 and 4, Block 1, THE GARDENS NORTH DEVELOPMENT, according to the plat thereof on file and of record in the office of the County Recorder, Olmsted County, Minnesota.

Said tract contains 3.69 acres, more or less.

Has caused the same to be surveyed and platted as THE GARDENS NORTH DEVELOPMENT FIFTH.

In witness whereof, said Bascom Capital, LLC, an Illinois limited liability company, have caused these presents to be signed by its proper officer this 5 day of August, 2015.

Bascom Capital, LLC

Mark Bell  
Manager

STATE OF ILLINOIS  
COUNTY OF Cook

The foregoing instrument was acknowledged before me this 5 day of August, 2015, by Mark Bell, Manager of said Bascom Capital, LLC, on behalf of the company.

Notary Public, Cook County, IL

My Commission Expires 4/6/2016

STATE OF MINNESOTA  
COUNTY OF OLMSTED  
CITY OF ROCHESTER

I, Aaron S. Reeves, City Clerk in and for the City of Rochester, do hereby certify that on the 6 day of July, 2015, the accompanying plat was duly approved by the Common Council of the City of Rochester. In testimony whereof, I have hereunto signed my name and affixed the Seal of said City of Rochester this 11 day of August, 2015.

Aaron S. Reeves  
City Clerk  
City of Rochester

### COUNTY SURVEYOR

I certify that this plat has been checked mathematically and that the plat conforms to applicable platting laws.

This 28 day of July, 2015.

Paul A. Thurston  
Olmsted County Surveyor

### SURVEYOR'S CERTIFICATE

I, Mark J. Haselius, do hereby certify that this plat was prepared by me or under my direct supervision; that I am a duly Licensed Land Surveyor in the State of Minnesota; that this plat is a correct representation of the boundary survey; that all mathematical data and labels are correctly designated on this plat; that all monuments depicted on this plat have been, or will be correctly set by July 20, 2016; that all water boundaries and wet lands, as defined in Minnesota Statutes, Section 505.01, Subd. 3, as of the date of this certificate are shown and labeled on this plat; and all public ways are shown and labeled on this plat.

Dated this 24 day of July, 2015

Mark J. Haselius  
Mark J. Haselius, Licensed Land Surveyor  
Minnesota License No. 47034

STATE OF MINNESOTA  
COUNTY OF OLMSTED

This instrument was acknowledged before me this 24 day of July, 2015, by Mark J. Haselius.

Douglas A. Perde  
Notary Public, Olmsted County, MN

My Commission Expires 1-31-16

### PROPERTY RECORDS AND LICENSING

Taxes payable in the year 2015 on the land herein described have been paid, there are no delinquent taxes and transfer has been entered this 12<sup>th</sup> day of August, 2015.

Document Number: A1378068

I hereby certify that this instrument was filed in the Office of Property Records and Licensing for the record on this 12<sup>th</sup> day of August, 2015, at 9 o'clock A.m. and was duly recorded in Olmsted County Records.

W. Mark Krupski  
Olmsted County Director of Property  
Records and Licensing

By Wendy von Wald Deputy

1325A

SEH  
PHONE: 507.288.6464  
717 3RD AVENUE S.E.  
ROCHESTER, MN 55904  
www.sehinc.com

Mark Haselius P:\E\A\HABRE\132000\9-survey\92-CAD\15-dwg\HABRE\132000-Plat01.dwg Wednesday, July 22, 2015