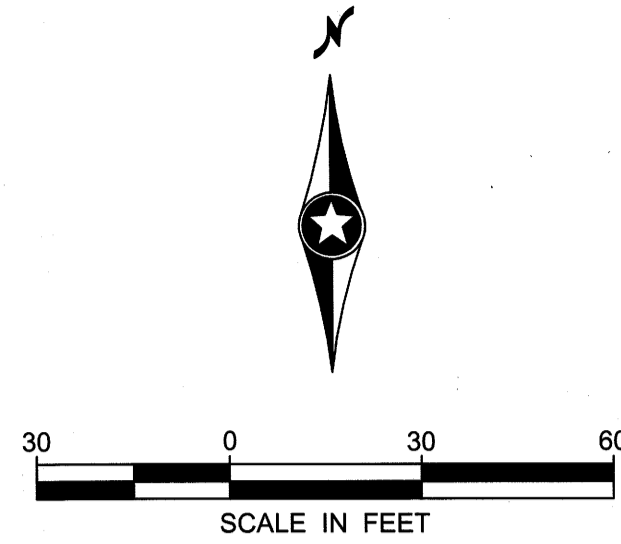
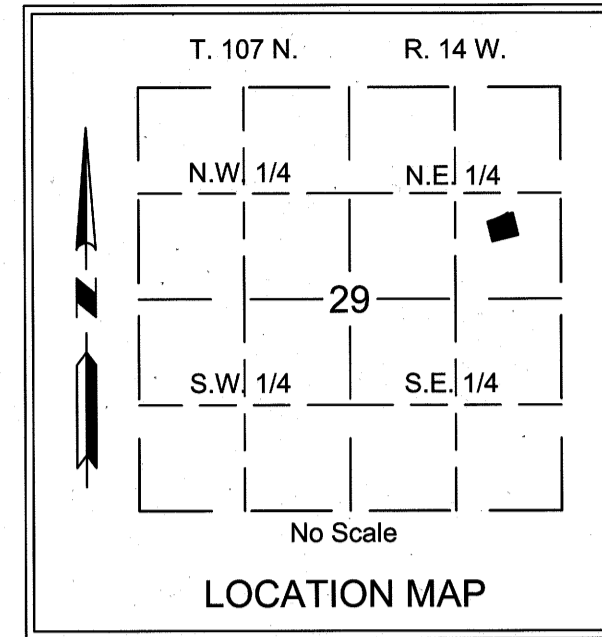


# CIRCLE 19 PLAZA THIRD



ORIENTATION OF THIS AZIMUTH SYSTEM IS ASSUMED AND BASED ON THE WEST LINE OF BLOCK 4, CIRCLE 19 PLAZA HAVING AN AZIMUTH OF 165°55'46" MEASURED CLOCKWISE FROM 00°00'00" NORTH.

### UTILITY EASEMENT DEFINED

AN UNOBSTRUCTED EASEMENT FOR THE CONSTRUCTION AND MAINTENANCE OF ALL NECESSARY OVERHEAD, UNDERGROUND OR SURFACE PUBLIC UTILITIES, INCLUDING RIGHTS TO CONDUCT DRAINAGE AND TRIMMING ON SAID EASEMENT.

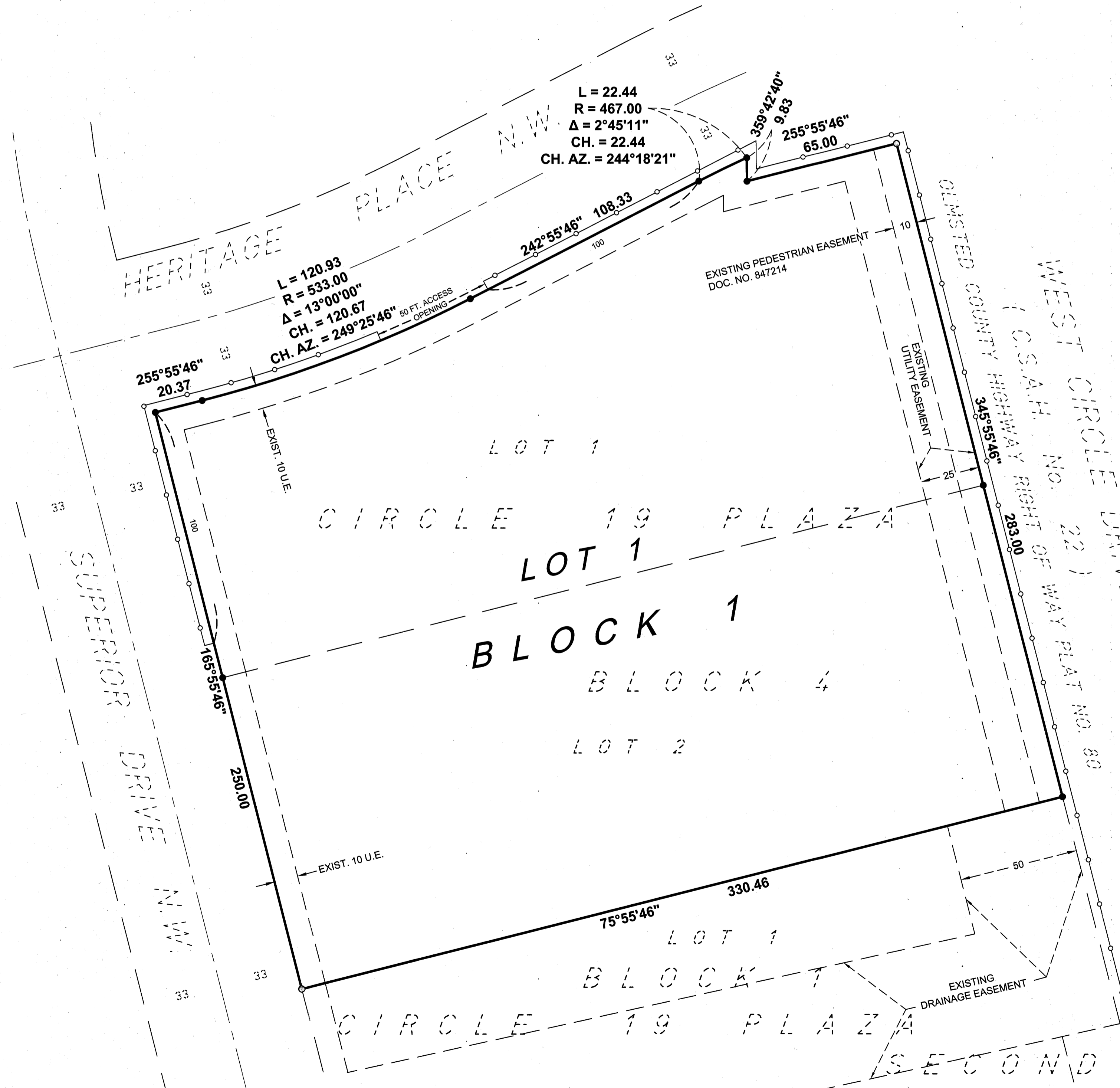
U.E. = UTILITY EASEMENT

### CONTROLLED ACCESS DEFINED

INGRESS AND EGRESS TO, FROM OR ACROSS THE ABUTTING ROADWAY IS RESTRICTED BY THE ROAD AUTHORITY PURSUANT TO MINNESOTA STATUTE 160.08.

### LEGEND

- DENOTES 3/4 INCH BY 18 INCH IRON PIPE SET AND MARKED BY LICENSE NO. 47034 UNLESS OTHERWISE NOTED.
- DENOTES IRON MONUMENT FOUND
- DENOTES CONTROLLED ACCESS



### INSTRUMENT OF DEDICATION

KNOW ALL PERSONS BY THESE PRESENTS: That West Bancorporation, Inc., a corporation existing under the laws of Iowa, owner of the following described property:

Lots 1 and 2, Block 4, CIRCLE 19 PLAZA, according to the plat thereof on file and of record in the office of the County Recorder, Olmsted County, Minnesota.

Said tract contains 2.04 acres, more or less.

Has caused the same to be surveyed and platted as CIRCLE 19 PLAZA THIRD.

In witness whereof said West Bancorporation, Inc. has caused these presents to be signed by its proper officer this 30<sup>th</sup> day of August, 2015.

West Bancorporation, Inc.

*Douglas R. Gulling*  
Douglas R. Gulling  
Executive Vice President

STATE OF IOWA  
COUNTY OF POLK

The foregoing instrument was acknowledged before me this 30<sup>th</sup> day of August, 2015, by Douglas R. Gulling, Executive Vice President of West Bancorporation, Inc. on behalf of the corporation.

*Melissa Dillehay*  
Notary Public, Polk County, IA

My Commission Expires 11-30-17

STATE OF MINNESOTA  
COUNTY OF OLMSTED  
CITY OF ROCHESTER

I, Aaron S. Reeves, City Clerk in and for the City of Rochester, do hereby certify that on the 6<sup>th</sup> day of July, 2015, the accompanying plat was duly approved by the Common Council of the City of Rochester. In testimony whereof, I have hereunto signed my name and affixed the Seal of said City of Rochester this 7<sup>th</sup> day of August, 2015.

*Aaron S. Reeves*  
Aaron S. Reeves  
City Clerk  
City of Rochester

### COUNTY SURVEYOR

I certify that this plat has been checked mathematically and that the plat conforms to applicable platting laws.

This 28<sup>th</sup> day of JULY, 2015

*Paul A. Thorson*  
Paul A. Thorson  
Olmsted County Surveyor

### SURVEYOR'S CERTIFICATE

I, Mark J. Haselius, do hereby certify that this plat was prepared by me or under my direct supervision; that I am a duly Licensed Land Surveyor in the State of Minnesota; that this plat is a correct representation of the boundary survey; that all mathematical data and labels are correctly designated on this plat; that all monuments depicted on this plat have been, or will be correctly set by July 20, 2016; that all water boundaries and wet lands, as defined in Minnesota Statutes, Section 505.01, Subd. 3, as of the date of this certificate are shown and labeled on this plat; and all public ways are shown and labeled on this plat.

Dated this 24<sup>th</sup> day of July, 2015.

*Mark J. Haselius*  
Mark J. Haselius, Licensed Land Surveyor  
Minnesota License No. 47034

STATE OF MINNESOTA  
COUNTY OF OLMSTED

This instrument was acknowledged before me this 24<sup>th</sup> day of July, 2015, by Mark J. Haselius.

*Douglas D. Reeder*  
Notary Public, Olmsted County, MN

My Commission Expires 1-31-16

### PROPERTY RECORDS AND LICENSING

Taxes payable in the year 2015 on the land herein described have been paid, there are no delinquent taxes and transfer has been entered this 14<sup>th</sup> day of Aug., 2015.

Document Number A1377724

I hereby certify that this instrument was filed in the Office of Property Records and Licensing for the record on this 14<sup>th</sup> day of Aug., 2015, at 3:12 o'clock p.m. and was duly recorded in Olmsted County Records.

*W. Mark Krupski*  
Olmsted County Director of Property  
Records and Licensing

By *Wendy von Wald* Deputy

1324A

