

# 501 ON FIRST



BASIS OF BEARING SYSTEM : ALL BEARINGS ARE IN RELATIONSHIP WITH THE NORTH LINE OF LOT 6, BLOCK 1, ORIGINAL PLAT OF ROCHESTER, WHICH IS ASSUMED TO BE N89°43'38"E.

KNOW ALL PERSONS BY THESE PRESENTS: That 501 on 1st, LLC, a Minnesota limited liability company, owner of the following described property:

Lots 5, 6, 7 and 8, Block 1, ORIGINAL PLAT, Rochester, Minnesota.

Containing in all, 0.66 acres, more or less.

Has caused the same to be surveyed and platted as 501 ON FIRST.

In witness whereof, said 501 on 1st, LLC, a Minnesota limited liability company, has caused these presents to be signed by its proper officer this 30 day of July, 2015.

SIGNED: 501 on 1st, LLC

Mark Kramer  
Mark Kramer, Chief Manager

STATE OF Minnesota  
COUNTY OF Olmsted

This instrument was acknowledged before me on July 30<sup>th</sup>, 2015 by Mark Kramer, Chief Manager of 501 on 1st, LLC, a Minnesota limited liability company.

Jessica Chy  
Notary Public, Olmsted County, Minnesota

Jessica Veltjen  
Notary Printed Name

My commission expires 1/31/19

### SURVEYOR'S CERTIFICATE

I Mark E. Severson do hereby certify that this plat was prepared by me or under my direct supervision; that I am a duly Licensed Land Surveyor in the State of Minnesota; that this plat is a correct representation of the boundary survey; that all mathematical data and labels are correctly designated on this plat; that all monuments depicted on this plat have been, or will be correctly set within one year; that all water boundaries and wet lands, as defined in Minnesota Statutes, Section 505.01, Subd. 3, as of the date of this certificate are shown and labeled on this plat; and all public ways are shown and labeled on this plat.

Dated this 30 day of JULY, 2015.

Mark E. Severson  
Mark E. Severson, Professional Surveyor  
Minnesota License No. 18887

STATE OF MINNESOTA  
COUNTY OF OLMSTED  
The instrument was acknowledged before me on July 30, 2015 by Mark E. Severson.

Heather Hanson  
Notary Public, Olmsted County, Minnesota

Heather Hanson  
Notary Printed Name

My commission expires January 31, 2019

### OLMSTED COUNTY SURVEYOR

I hereby certify that in accordance with Minnesota Statutes, Section 505.021, Subd. 11, this plat has been reviewed and approved this 31 day of JULY, 2015.

Paul S. Morrison  
Olmsted County Surveyor

### CITY APPROVAL

STATE OF MINNESOTA  
COUNTY OF OLMSTED  
CITY OF ROCHESTER  
I, Valori Langseth Deputy City Clerk, in and for the City of Rochester, do hereby certify that on the 15<sup>th</sup> day of JUNE, 2015, the accompanying plat was duly approved by the Common Council of the City of Rochester. In testimony thereof, I have hereunto signed my name and affixed the seal of said City of Rochester this 30<sup>th</sup> day of August, 2015.

Valori Langseth  
Aron S. Reeves, City Clerk  
Valori Langseth Deputy

### PROPERTY RECORDS AND LICENSING

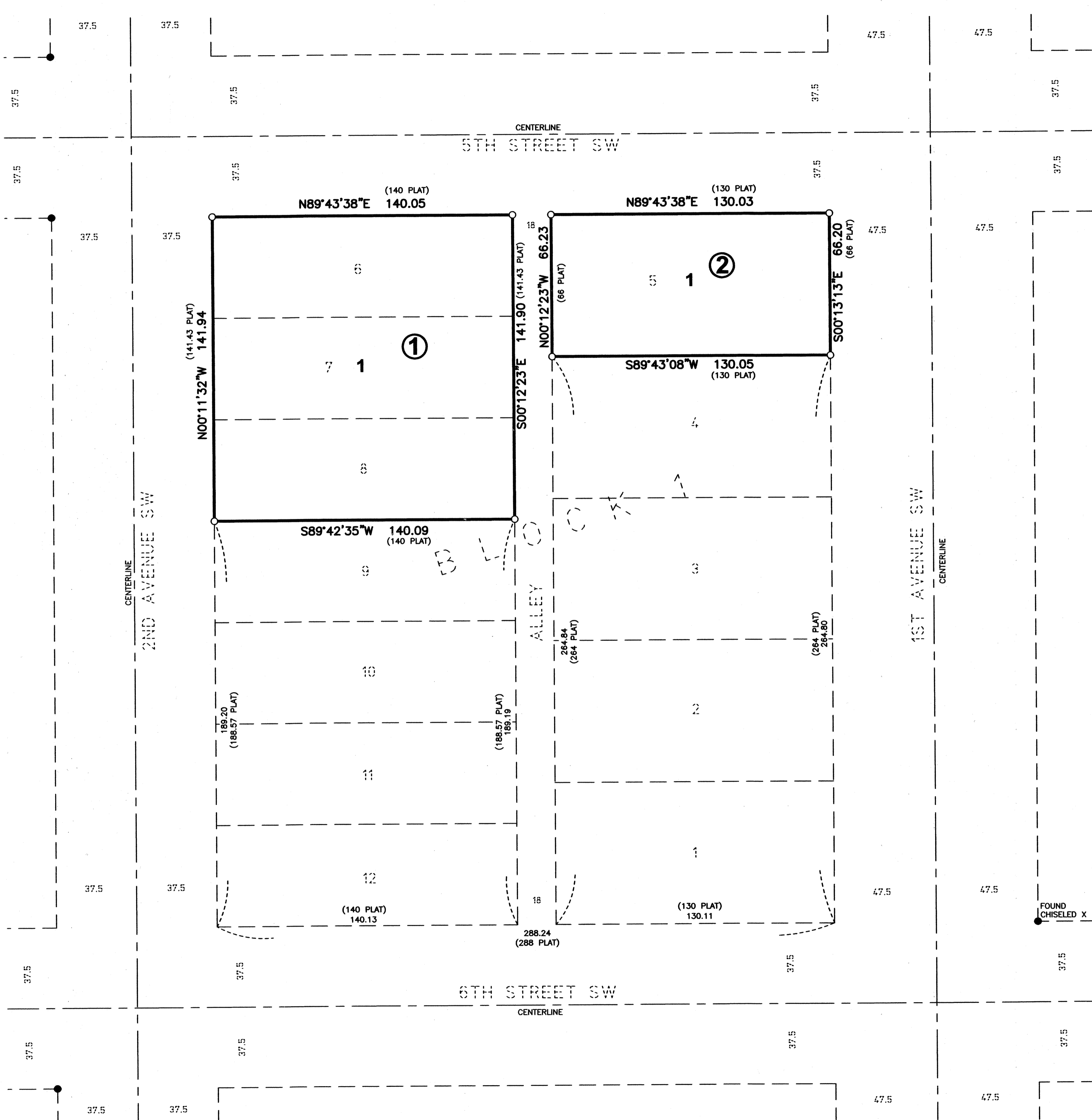
Taxes payable in the year 2015 on the land described herein have been paid, there are no delinquent taxes and transfer has been entered this 3<sup>rd</sup> day of August, 2015.

DOCUMENT NUMBER A1377271

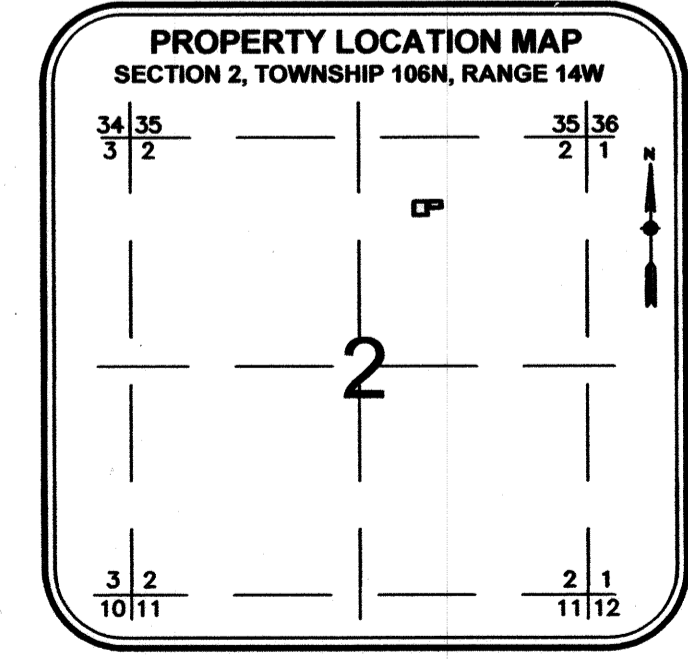
I hereby certify that this instrument was filed in the Office of Property Records and Licensing for the record on this 3<sup>rd</sup> day of August, 2015, at 3:45 o'clock P.M., and was duly recorded in the Olmsted County records.

W. Mark Krupski  
Director of Property Records & Licensing

Jessica Kramer  
Deputy



NOTE:  
ALL MONUMENTS SHOWN THUS: ○  
ARE 5/8" I.D. CAPPED PIPES WITH LICENSE NO. 18887 WHICH WILL BE SET WITHIN 1 YEAR AFTER RECORDING OF THIS PLAT.  
ALL MONUMENTS SHOWN THUS: ●  
ARE FOUND IRON MONUMENTS UNLESS OTHERWISE NOTED.



# 1322A

1648 Third Avenue SE  
Rochester, MN 55904  
507-289-3919  
www.wsbeng.com  
**WSB**  
& Associates, Inc.