

GAGE EAST ADDITION

KNOW ALL PERSONS BY THESE PRESENTS: That Rochester Independent School District No. 535, owner of the following described property:

Lot 1, Block 1, SUMMIT SQUARE FIRST SUBDIVISION, Rochester, Minnesota.

ALSO:

That part of Lot 1, Block 14, SUNRISE ESTATES SECOND SUBDIVISION, and part of vacated 10th Avenue NW, both being in Rochester, Minnesota and described as follows:

Beginning at the northeast corner of said Lot 1, Block 14, SUNRISE ESTATES SECOND SUBDIVISION; thence North 71 degrees 40 minutes 22 seconds West, assumed bearing, along the north line of said Lot 1 and the northwesterly prolongation thereof, 139.09 feet; thence South 00 degrees 50 minutes 08 seconds East, 584.48 feet to the south line of said Lot 1; thence South 89 degrees 21 minutes 03 seconds East, along said south line, 131.57 feet to the southeast corner of said Lot 1; thence North 00 degrees 51 minutes 02 seconds West, along the east line of said Lot 1, a distance of 542.23 feet to the point of beginning.

Containing in all, 6.23 acres, more or less.

Has caused the same to be surveyed and platted as GAGE EAST ADDITION and does hereby dedicate to the public for public use, the drainage and utility easements as created by this plat.

In witness whereof, said Rochester Independent School District No. 535, has caused these presents to be signed by its proper officer this 16 day of June, 2015.

SIGNED: Rochester Independent School District No. 535

Deborah Seelinger
Deborah Seelinger, Chair

Daniel A. O'Neil
Dan O'Neil, Clerk

STATE OF MINNESOTA
COUNTY OF OLMTSTED

This instrument was acknowledged before me on June 16, 2015 by Deborah Seelinger, Chair, and Dan O'Neil, Clerk of Rochester Independent School District No. 535.

Wendy Edgar
Notary Public, Olmsted County, Minnesota

Wendy Edgar
Notary Printed Name

My commission expires Jan 31, 2020

SURVEYOR'S CERTIFICATE

I Mark E. Severson do hereby certify that this plat was prepared by me or under my direct supervision; that I am a duly Licensed Land Surveyor in the State of Minnesota; that this plat is a correct representation of the boundary survey; that all mathematical data and labels are correctly designated on this plat; that all monuments depicted on this plat have been, or will be correctly set within one year; that all water boundaries and wet lands, as defined in Minnesota Statutes, Section 505.01, Subd. 3, as of the date of this certificate are shown and labeled on this plat; and all public ways are shown and labeled on this plat.

Dated this 12 day of June, 2015.

Mark E. Severson
Mark E. Severson, Professional Surveyor
Minnesota License No. 18887

STATE OF MINNESOTA
COUNTY OF OLMTSTED

The instrument was acknowledged before me on June 12, 2015 by Mark E. Severson.

Heather Hanson
Notary Public, Olmsted County, Minnesota

Heather Hanson
Notary Printed Name

My commission expires January 31, 2019

OLMTSTED COUNTY SURVEYOR

I hereby certify that in accordance with Minnesota Statutes, Section 505.021, Subd. 11, this plat has been reviewed and approved this 16 day of JUNE, 2015.

Paul J. Thorsen
Olmsted County Surveyor

CITY APPROVAL

STATE OF MINNESOTA
COUNTY OF OLMTSTED
CITY OF ROCHESTER

I, Aaron S. Reeves, City Clerk, in and for the City of Rochester, do hereby certify that on the 15 day of June, 2015, the accompanying plat was duly approved by the Common Council of the City of Rochester. In testimony thereof, I have hereunto signed my name and affixed the seal of said City of Rochester this 23 day of June, 2015.

Aaron S. Reeves
Aaron S. Reeves, City Clerk

PROPERTY RECORDS AND LICENSING

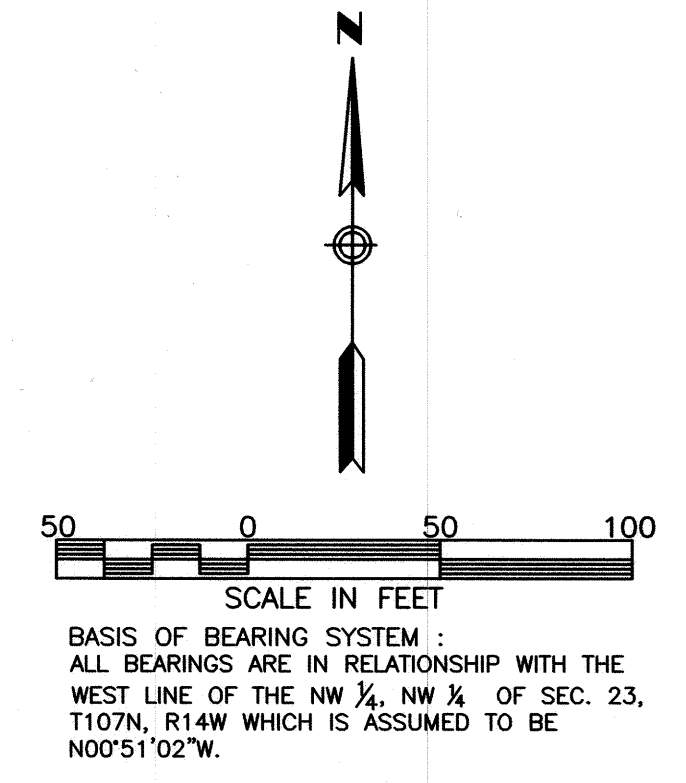
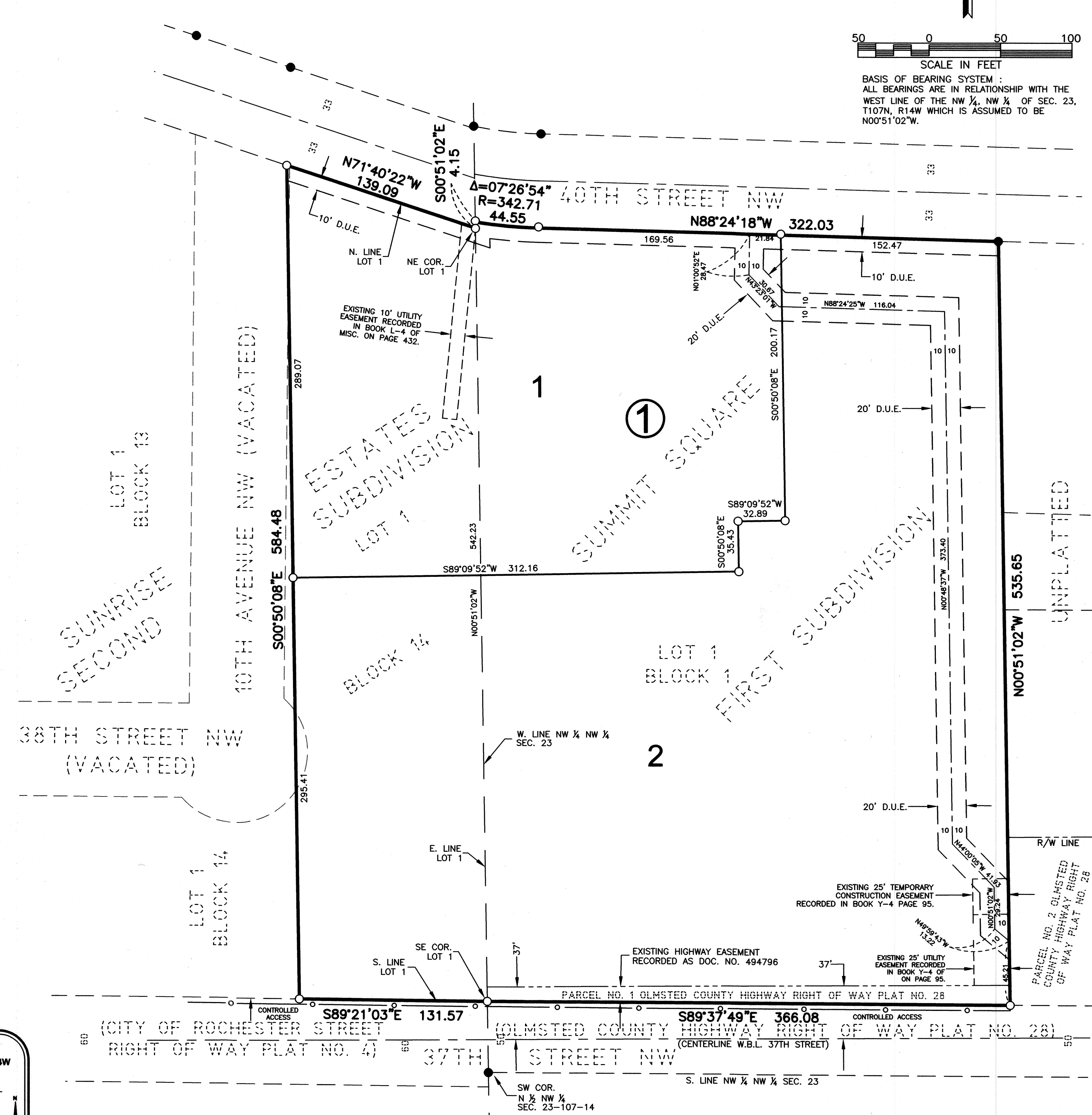
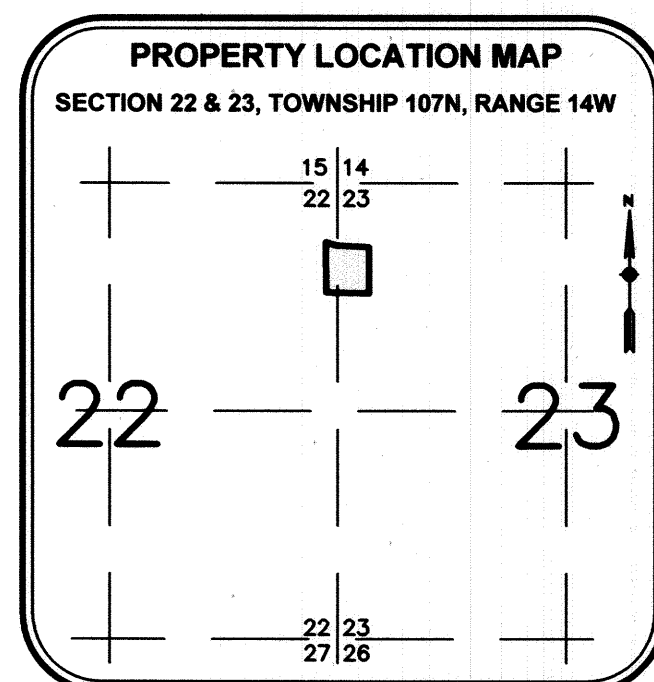
Taxes payable in the year 2015 on the land described herein have been paid, there are no delinquent taxes and transfer has been entered this 24th day of JUNE, 2015.

DOCUMENT NUMBER A1373626

I hereby certify that this instrument was filed in the Office of Property Records and Licensing for the record on this 24th day of JUNE, 2015, at 9 o'clock A.M., and was duly recorded in the Olmsted County records.

W. Mark Krupski
Director of Property Records & Licensing

Wendy von Wald
Deputy



NOTE:
ALL MONUMENTS SHOWN THIS: ○ ARE 5/8" I.D. CAPPED PIPES WITH LICENSE NO. 18887 WHICH WILL BE SET WITHIN 1 YEAR AFTER RECORDING OF THIS PLAT.
ALL MONUMENTS SHOWN THIS: ● ARE FOUND IRON MONUMENTS UNLESS OTHERWISE NOTED.
D.U.E. = DRAINAGE AND UTILITY EASEMENT

1648 Third Avenue SE
Rochester, MN 55904
507-289-3919
www.wsbeng.com
WSB
& Associates, Inc.

1315A