

ORONOCO CROSSINGS SECOND

KNOW ALL MEN BY THESE PRESENTS: That People's Cooperative Services, a Minnesota cooperative association, owner and proprietor of the following described property situated in the County of Olmsted, State of Minnesota, to wit:

Lot 2, Block 1, ORONOCO CROSSINGS FIRST REPLAT, Olmsted County, Minnesota.

Containing in all, 7.63 acres, more or less.

Has caused the same to be surveyed and platted as ORONOCO CROSSINGS SECOND and does hereby dedicate to the public for public use, the public ways and the drainage and utility easements as created by this plat.

In witness whereof said People's Cooperative Services, a Minnesota cooperative association, has caused these presents to be signed by its President and CEO this 14 day of November, 2014.

SIGNED: PEOPLE'S COOPERATIVE SERVICES

Elaine J. Garry
Elaine J. Garry, President and CEO

STATE OF Minnesota
COUNTY OF Olmsted

This instrument was acknowledged before me on Nov. 14, 2014 by Elaine J. Garry, President and CEO of People's Cooperative Services, a Minnesota cooperative association.

Sharon K. Rocheleau
Notary Public, Olmsted County, Minnesota

Sandra K. Rocheleau
Notary Printed Name

My commission expires Jan 31, 2015

SURVEYOR'S CERTIFICATE

I Mark E. Severson do hereby certify that this plat was prepared by me or under my direct supervision; that I am a duly Licensed Land Surveyor in the State of Minnesota; that this plat is a correct representation of the boundary survey; that all mathematical data and labels are correctly designated on this plat; that all monuments depicted on this plat have been, or will be correctly set within one year; that all water boundaries and wet lands, as defined in Minnesota Statutes, Section 505.01, Subd. 3, as of the date of this certificate are shown and labeled on this plat; and all public ways are shown and labeled on this plat.

Dated this 9 day of DECEMBER, 2014.

Mark E. Severson
Mark E. Severson, Professional Surveyor
Minnesota License No. 18887

STATE OF MINNESOTA
COUNTY OF OLMSTED

The instrument was acknowledged before me on December 9, 2014 by Mark E. Severson.

Tabitha Marie Walsh
Notary Public, Olmsted County, Minnesota

Tabitha Marie Walsh
Notary Printed Name

My commission expires Jan 31, 2019

COUNTY SURVEYOR

I hereby certify that in accordance with Minnesota Statutes, Section 505.021, Subd. 11, this plat has been reviewed and approved this 17 day of NOVEMBER, 2014.

Joel A. Thoreson
Olmsted County Surveyor

CITY APPROVAL

Approved by Oronoco City Council on this 20 day of May, 2014.

K.M. Anderson
Mayor

Sandra Josen
City Clerk

PROPERTY RECORDS AND LICENSING

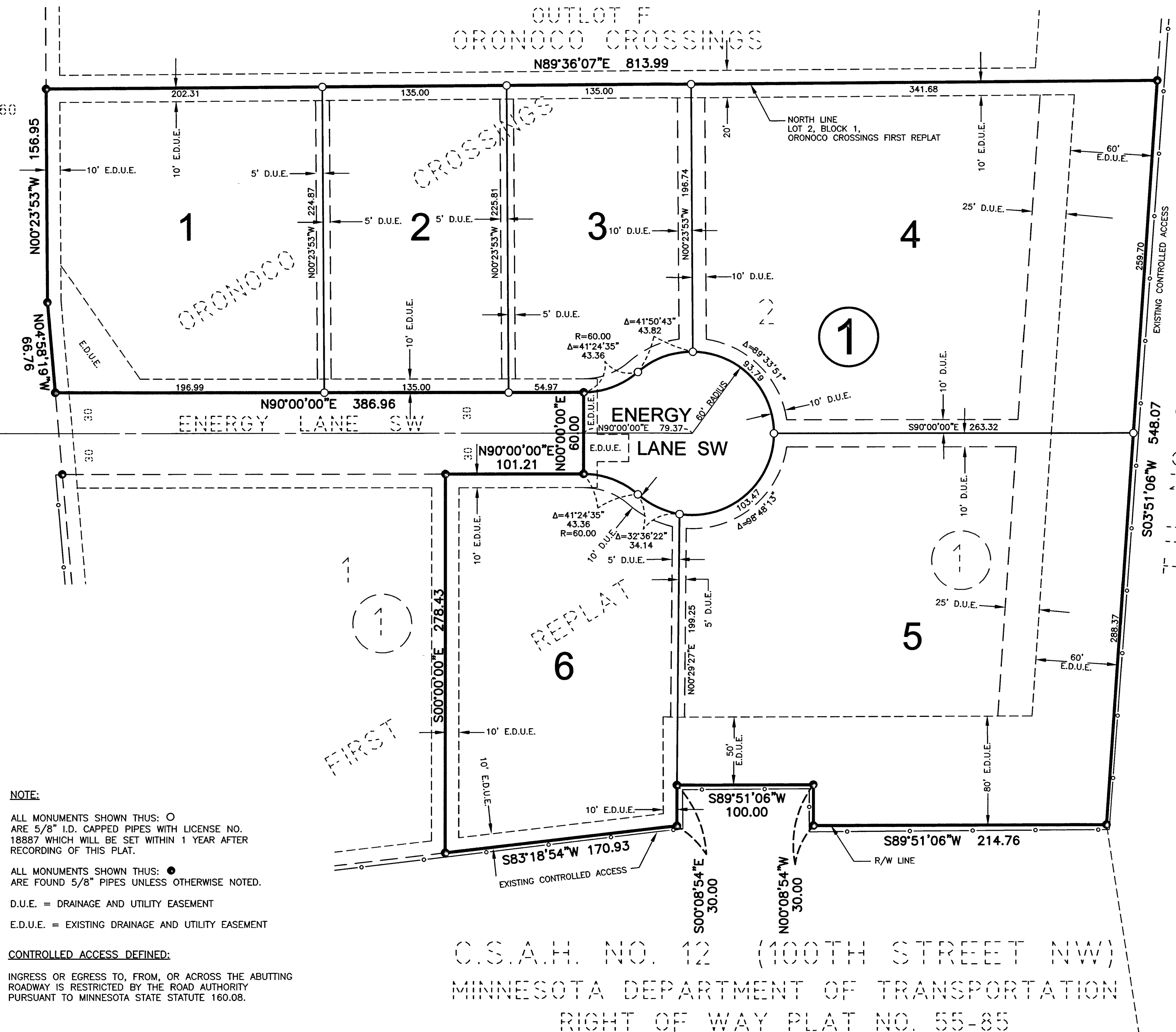
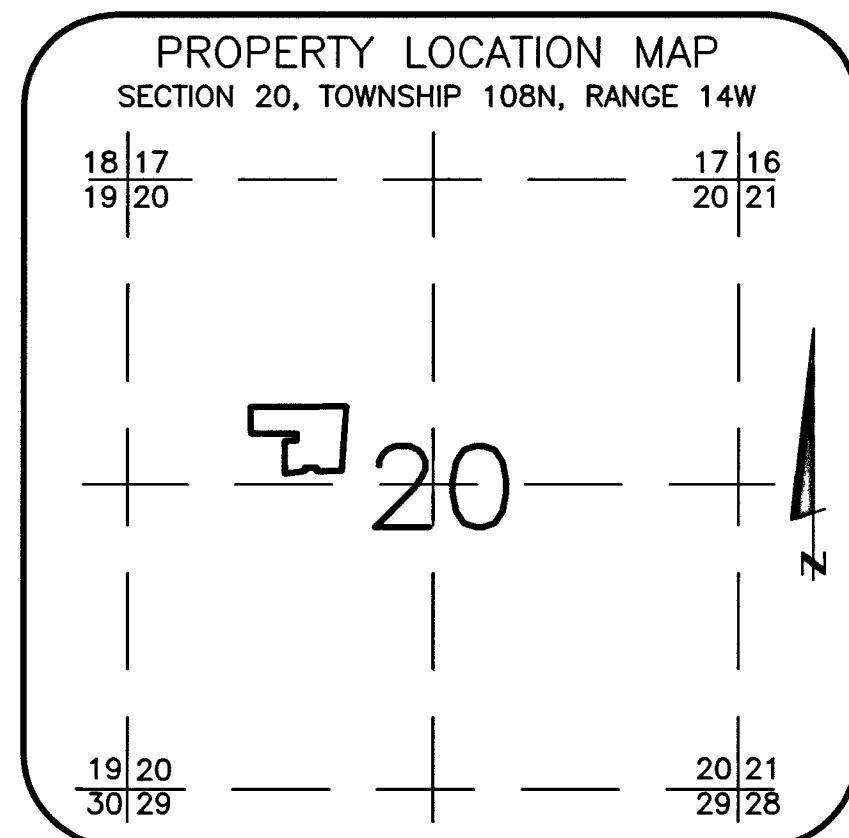
Taxes payable in the year 2014 on the land described herein have been paid, there are no delinquent taxes and transfer has been entered this 15th day of December, 2014.

DOCUMENT NUMBER A1360795

I hereby certify that this instrument was filed in the Office of Property Records and Licensing for the record on this 15th day of December, 2014, at 1 o'clock P.M., and was duly recorded in the Olmsted County records.

W. Mark Krupski
Director of Property Records & Licensing

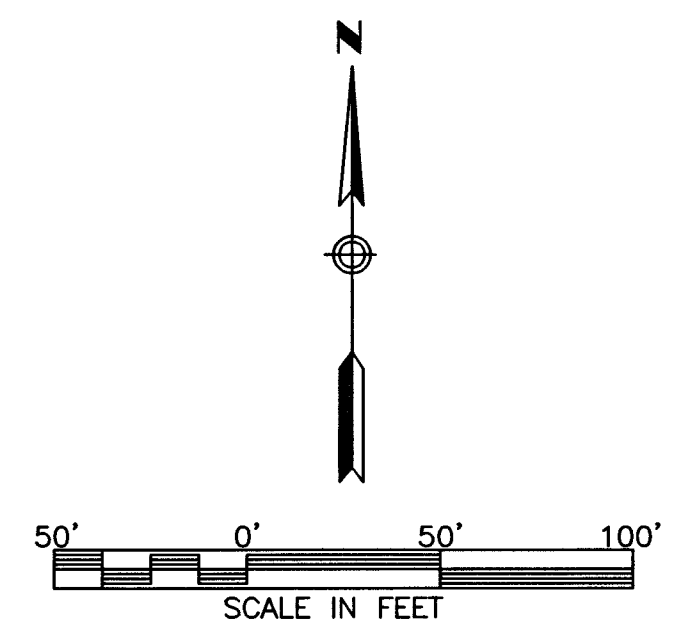
Wendy von Wald
Deputy



NOTE:
ALL MONUMENTS SHOWN THUS: ○ ARE 5/8" I.D. CAPPED PIPES WITH LICENSE NO. 18887 WHICH WILL BE SET WITHIN 1 YEAR AFTER RECORDING OF THIS PLAT.
ALL MONUMENTS SHOWN THUS: ● ARE FOUND 5/8" PIPES UNLESS OTHERWISE NOTED.
D.U.E. = DRAINAGE AND UTILITY EASEMENT
E.D.U.E. = EXISTING DRAINAGE AND UTILITY EASEMENT
CONTROLLED ACCESS DEFINED:
INGRESS OR EGRESS TO, FROM, OR ACROSS THE ABUTTING ROADWAY IS RESTRICTED BY THE ROAD AUTHORITY PURSUANT TO MINNESOTA STATE STATUTE 160.08.

C.S.A.H. NO. 12 (100TH STREET NW)
MINNESOTA DEPARTMENT OF TRANSPORTATION
RIGHT OF WAY PLAT NO. 55-85

BASIS OF BEARING SYSTEM:
ALL BEARINGS ARE IN RELATIONSHIP WITH THE NORTH LINE OF LOT 2, BLOCK 1, ORONOCO CROSSINGS FIRST REPLAT, WHICH IS ASSUMED TO BE NORTH 89 DEGREES 36 MINUTES 07 SECONDS EAST.



MINNESOTA DEPARTMENT OF TRANSPORTATION
RIGHT OF WAY PLAT NO. 55-80
T.H. NO. 52

McGhie & Betts
1648 Third Avenue S.E.
Rochester, MN 55904
Telephone: 507-289-3919
Fax: 507-289-7333
mbi@mcghiebetts.com

1301A