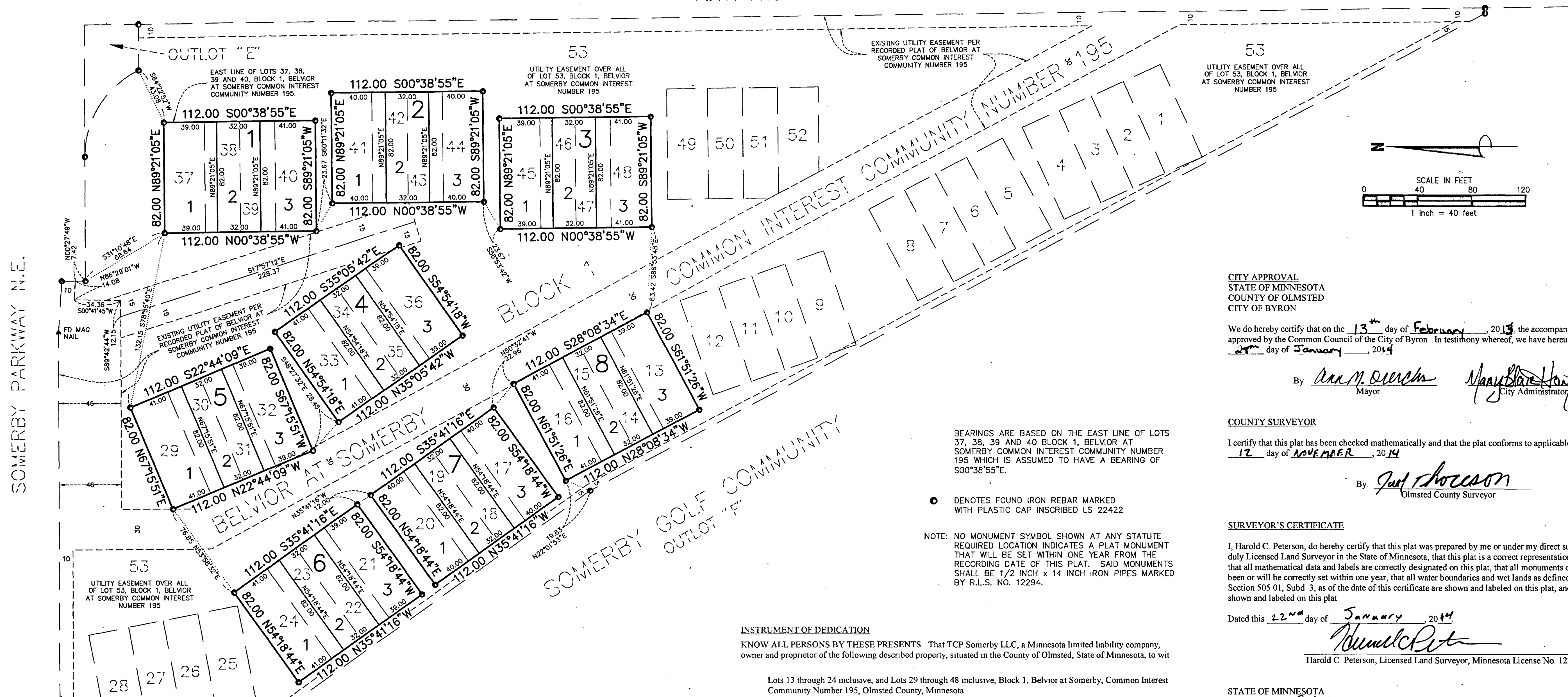
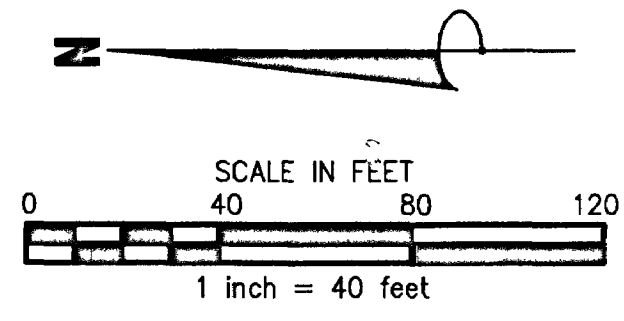


BELVIOR AT SOMERBY SECOND ADDITION COMMON INTEREST COMMUNITY NUMBER 195

10TH AVENUE N.E.



SOMERBY PARKWAY N.E.



CITY APPROVAL
STATE OF MINNESOTA
COUNTY OF OLMTSTED
CITY OF BYRON

We do hereby certify that on the 13th day of February, 2014, the accompanying plat was duly approved by the Common Council of the City of Byron. In testimony whereof, we have hereunto signed our names this 27th day of January, 2014.

By Ann M. Dierck Mayor
Mary Blomberg City Administrator

COUNTY SURVEYOR

I certify that this plat has been checked mathematically and that the plat conforms to applicable platting laws this 12 day of NOVEMBER, 2014.

By Just Johnson
Olmsted County Surveyor

BEARINGS ARE BASED ON THE EAST LINE OF LOTS 37, 38, 39 AND 40, BLOCK 1, BELVIOR AT SOMERBY COMMON INTEREST COMMUNITY NUMBER 195 WHICH IS ASSUMED TO HAVE A BEARING OF S00°38'55"E.

● DENOTES FOUND IRON REBAR MARKED WITH PLASTIC CAP INSCRIBED LS 22422

NOTE: NO MONUMENT SYMBOL SHOWN AT ANY STATUTE REQUIRED LOCATION INDICATES A PLAT MONUMENT THAT WILL BE SET WITHIN ONE YEAR FROM THE RECORDING DATE OF THIS PLAT. SAID MONUMENTS SHALL BE 1/2 INCH x 1/4 INCH IRON PIPES MARKED BY R.L.S. NO. 12294.

SURVEYOR'S CERTIFICATE

I, Harold C. Peterson, do hereby certify that this plat was prepared by me or under my direct supervision; that I am a duly Licensed Land Surveyor in the State of Minnesota, that this plat is a correct representation of the boundary survey, that all mathematical data and labels are correctly designated on this plat, that all monuments depicted on this plat have been or will be correctly set within one year, that all water boundaries and wet lands as defined in Minnesota Statutes, Section 505 01, Subd 3, as of the date of this certificate are shown and labeled on this plat, and all public ways are shown and labeled on this plat.

Dated this 22nd day of January, 2014
Harold C. Peterson
Harold C. Peterson, Licensed Land Surveyor, Minnesota License No. 12294

STATE OF MINNESOTA
COUNTY OF Dakota

This instrument was acknowledged before me on January 22, 2014 by Harold C. Peterson

Patrick Miller
Patrick Miller
Notary Public, Scott Co., MN
My Commission Expires January 31, 2019

COUNTY PROPERTY RECORDS AND LICENSING

Taxes payable in the year 2014 on the land herein described have been paid, there are no delinquent taxes and transfer has been entered this 20th day of November, 2014.

Document Number A1359395

I hereby certify that this instrument was filed in the Office of Property Records and Licensing for the record on this 20th day of November, 2014, at 3:12 o'clock P.m. and was duly recorded in Olmsted County Records

By W. Mark Krupski Director of Property Records and Licensing
Wendy von Wald Deputy

INSTRUMENT OF DEDICATION

KNOW ALL PERSONS BY THESE PRESENTS That TCP Somerby LLC, a Minnesota limited liability company, owner and proprietor of the following described property, situated in the County of Olmsted, State of Minnesota, to wit

Lots 13 through 24 inclusive, and Lots 29 through 48 inclusive, Block 1, Belvior at Somerby, Common Interest Community Number 195, Olmsted County, Minnesota

Has caused the same to be surveyed and platted as BELVIOR AT SOMERBY SECOND ADDITION COMMON INTEREST COMMUNITY NUMBER 195

In witness whereof said TCP Somerby LLC, a Minnesota limited liability company, has caused these presents to be signed by its proper officer this 22nd day of JANUARY, 2014

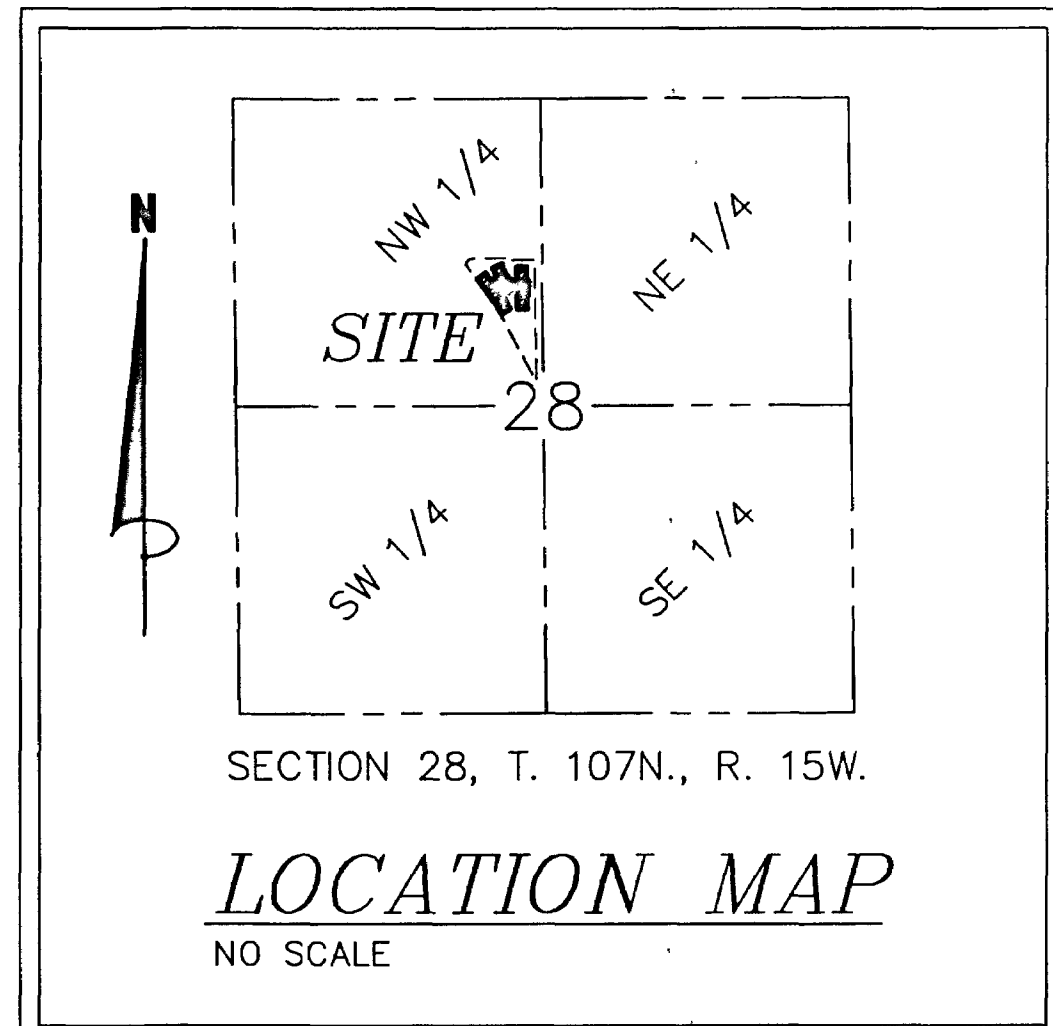
TCP SOMERBY, LLC

By Timothy J. Brown the MANAGER

STATE OF MINNESOTA
COUNTY OF Hennepin

This instrument was acknowledged before me on January 22, 2014 by Timothy J. Brown the Manager of TCP Somerby LLC, a Minnesota limited liability company, on behalf of the company

Deborah L. Ridgeway
Deborah L. Ridgeway
Notary Public, Minnesota
My Commission Expires January 31, 2015



1299A

JAMES R. HILL, INC.