

# SAVANNAH HEIGHTS

KNOW ALL PERSONS BY THESE PRESENTS: That Woodland Park LLC, a South Dakota limited liability company, owner of the following described property:

Lot 1, Block 11, PRAIRIE CROSSING, Rochester, Minnesota.

ALSO:

That part of Outlot 'H', PRAIRIE CROSSING, Rochester, Minnesota, described as follows:

Beginning at the northwest corner of Lot 1, Block 11, in said PRAIRIE CROSSING; thence North 56 degrees 07 minutes 27 seconds West, assumed bearing, along the easterly line of said Outlot 'H', 74.80 feet; thence South 43 degrees 39 minutes 24 seconds West, 233.97 feet; thence South 00 degrees 00 minutes 00 seconds East, 383.60 feet; thence easterly 51.53 feet along a nontangential curve, concave southerly, central angle of 09 degrees 50 minutes 32 seconds, radius of 300.00 feet, and the chord of said curve bears North 85 degrees 04 minutes 44 seconds East, 51.47 feet; thence North 90 degrees 00 minutes 00 seconds East, tangent to said curve, 22.43 feet to the southwest corner of said Lot 1; thence North 00 degrees 00 minutes 00 seconds West, along the west line of said Lot 1, a distance of 349.66 feet; thence North 43 degrees 39 minutes 24 seconds East, along said west line, 217.15 feet to the point of beginning.

Containing in all, 3.28 acres, more or less.

Has caused the same to be surveyed and platted as SAVANNAH HEIGHTS and does hereby dedicate to the public for public use, the public ways and the drainage and utility easements as created by this plat.

In witness whereof, said Woodland Park LLC, a South Dakota limited liability company, has caused these presents to be signed by its proper officer this 19 day of SEPTEMBER, 2014.

SIGNED: WOODLAND PARK LLC

Nathan Stencil, Vice President

STATE OF South Dakota  
COUNTY OF Hutchinson

This instrument was acknowledged before me on Sept 19, 2014 by Nathan Stencil, Vice President of Woodland Park LLC, a South Dakota limited liability company.

Jackie M. Stencil  
Notary Public, Olmsted County, Minnesota

Jackie M. Stencil  
Notary Printed Name

My commission expires Dec 8, 2015

### SURVEYOR'S CERTIFICATE

I, Mark E. Severson do hereby certify that this plat was prepared by me or under my direct supervision; that I am a duly Licensed Land Surveyor in the State of Minnesota; that this plat is a correct representation of the boundary survey; that all mathematical data and labels are correctly designated on this plat; that all monuments depicted on this plat have been, or will be correctly set within one year; that all water boundaries and wet lands, as defined in Minnesota Statutes, Section 505.01, Subd. 3, as of the date of this certificate are shown and labeled on this plat; and all public ways are shown and labeled on this plat.

Dated this 22 day of SEPTEMBER, 2014.

Mark E. Severson  
Mark E. Severson, Professional Surveyor  
Minnesota License No. 18887

STATE OF MINNESOTA  
COUNTY OF OLMSTED

The instrument was acknowledged before me on September 22, 2014 by Mark E. Severson.

Sheri Ryan  
Notary Public, Olmsted County, Minnesota

Sheri Ryan  
Notary Printed Name

My commission expires Jan 31, 2018

### OLMSTED COUNTY SURVEYOR

I hereby certify that in accordance with Minnesota Statutes, Section 505.021, Subd. 11, this plat has been reviewed and approved this 22 day of SEPTEMBER, 2014.

Jul S. Thurson  
Olmsted County Surveyor

### CITY APPROVAL

State of Minnesota  
County of Olmsted  
City of Rochester

I, Aaron S. Reeves, City Clerk, in and for the City of Rochester, do hereby certify that on the 4 day of August, 2014, the accompanying plat was duly approved by the Common Council of the City of Rochester. In testimony thereof, I have hereunto signed my name and affixed the seal of said City of Rochester this 23 day of September, 2014.

Aaron S. Reeves  
Aaron S. Reeves, City Clerk

### PROPERTY RECORDS AND LICENSING

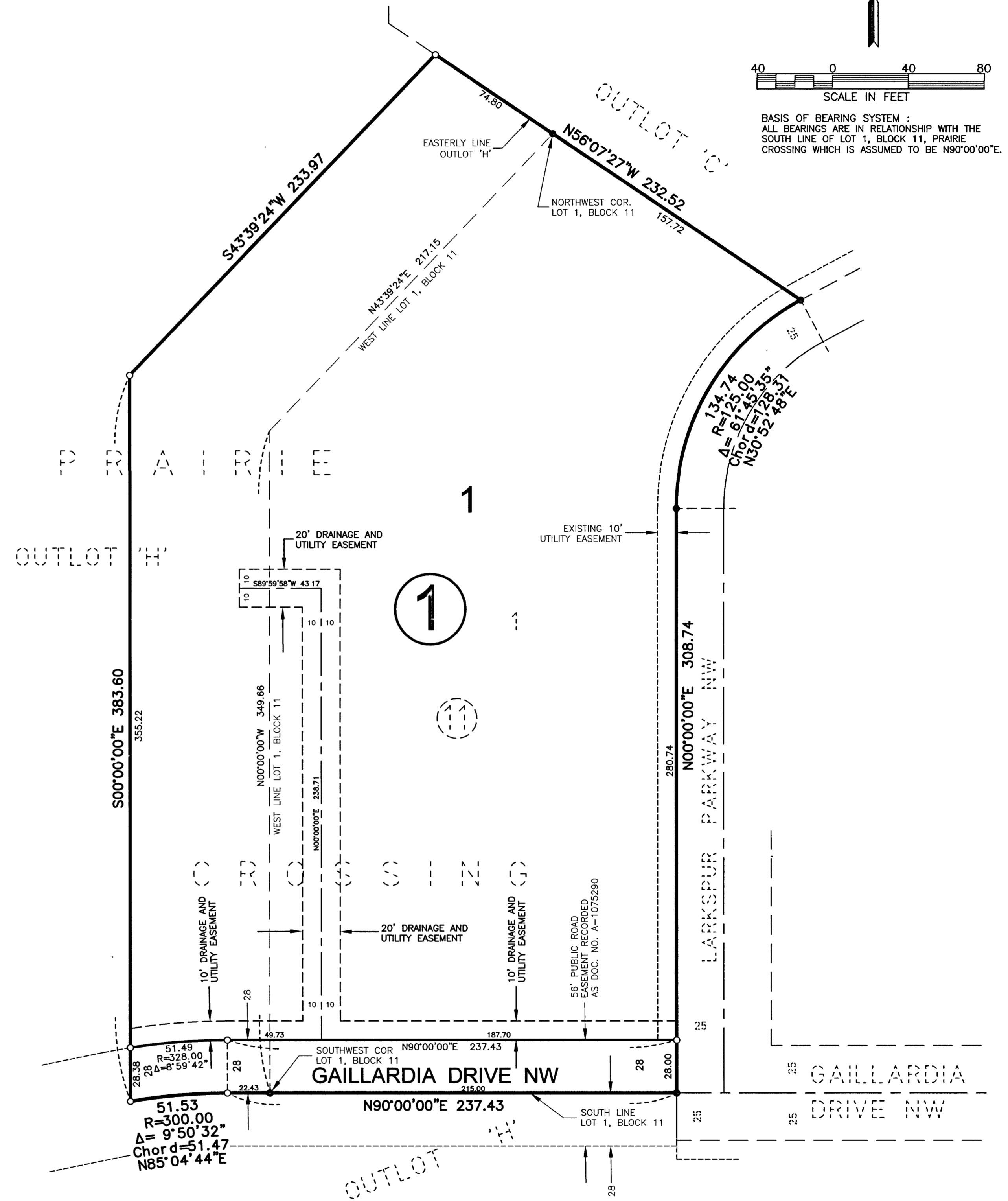
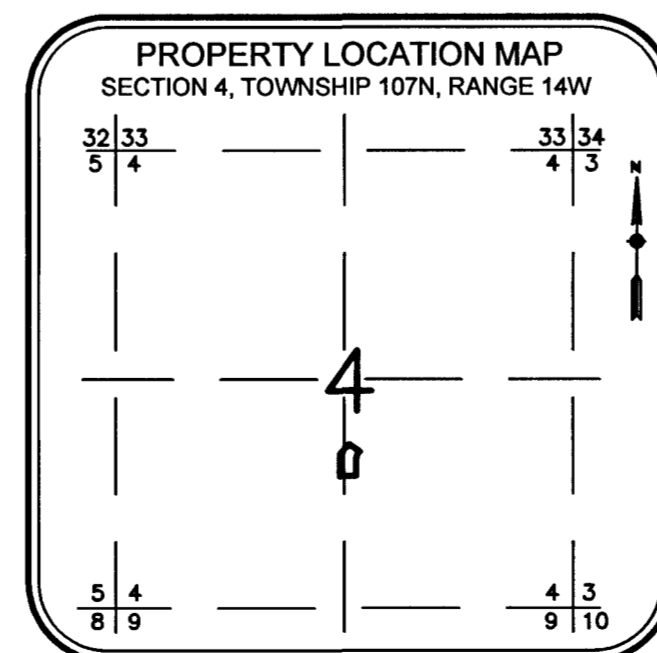
Taxes payable in the year 2014 on the land described herein have been paid, there are no delinquent taxes and transfer has been entered this 21th day of September, 2014.

DOCUMENT NUMBER A-1355565

I hereby certify that this instrument was filed in the Office of Property Records and Licensing for the record on this 24th day of September, 2014, at 12:12 o'clock P.M., and was duly recorded in the Olmsted County records.

W. Mark Krupski  
Director of Property Records & Licensing

Wendy von Wald  
Deputy



### NOTE:

ALL MONUMENTS SHOWN THUS: ○  
ARE 5/8" I.D. CAPPED PIPES WITH LICENSE NO. 18887 WHICH WILL BE SET WITHIN 1 YEAR AFTER RECORDING OF THIS PLAT.

ALL MONUMENTS SHOWN THUS: ●  
ARE FOUND 5/8" PIPES UNLESS OTHERWISE NOTED.

McGhie & Betts  
1648 Third Avenue S.E.  
Rochester, MN 55904  
Telephone: 507-289-3919  
Fax: 507-289-7333  
mbi@mcghiebetts.com

1291A