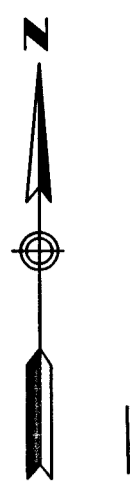


HART FARM SOUTH SIXTH



BASIS OF BEARING SYSTEM : ALL BEARINGS ARE IN RELATIONSHIP WITH THE SOUTH LINE OF HART FARM SOUTH WHICH IS ASSUMED TO BE S88°06'31"W.



KNOW ALL PERSONS BY THESE PRESENTS: That Arcon Development, Inc., a Minnesota corporation, owner of the following described property:

Lots 1 through 25, Block 1, and Lots 1 through 27, Block 2, all in HART FARM SOUTH FOURTH, Rochester, Minnesota.

ALSO:

All of Outlot 'D' and that part of Lot 5, Block 11, HART FARM SOUTH lying easterly of HART FARM SOUTH FOURTH, Rochester, Minnesota.

Containing in all, 10.70 acres, more or less.

Has caused the same to be surveyed and platted as HART FARM SOUTH SIXTH and does hereby dedicate to the public for public use, the public ways and the drainage and utility easements as created by this plat.

In witness whereof, said Arcon Development, Inc., a Minnesota corporation, has caused these presents to be signed by its proper officer this 10th day of September, 2014.

SIGNED: ARCON DEVELOPMENT, INC.

By Scott Johnson, its President

STATE OF MINNESOTA
COUNTY OF OLMTSTED

This instrument was acknowledged before me on September 10, 2014 by Scott Johnson the President, of Arcon Development, Inc., a Minnesota corporation.

Larry D. Frank
Notary Public, Olmsted County, Minnesota
My commission expires 1-31-17

Larry D. Frank
Notary Public Name

SURVEYOR'S CERTIFICATE

I Mark E. Severson do hereby certify that this plat was prepared by me or under my direct supervision; that I am a duly Licensed Land Surveyor in the State of Minnesota; that this plat is a correct representation of the boundary survey; that all mathematical data and labels are correctly designated on this plat; that all monuments depicted on this plat have been, or will be correctly set within one year; that all water boundaries and wet lands, as defined in Minnesota Statutes, Section 505.01, Subd. 3, as of the date of this certificate are shown and labeled on this plat; and all public ways are shown and labeled on this plat.

Dated this 12 day of September, 2014.

Mark E. Severson
Mark E. Severson, Professional Surveyor
Minnesota License No. 18887

STATE OF MINNESOTA
COUNTY OF OLMTSTED

The instrument was acknowledged before me on September 12, 2014 by Mark E. Severson.

Sheri Ryan
Notary Public, Olmsted County, Minnesota
My commission expires 01-31-2018

Sheri Ryan
Notary Printed Name

OLMTSTED COUNTY SURVEYOR

I hereby certify that in accordance with Minnesota Statutes, Section 505.021, Subd. 11, this plat has been reviewed and approved this 12 day of SEPTEMBER, 2014.

Jed L. Thoreson
Olmsted County Surveyor

CITY APPROVAL

State of Minnesota
County of Olmsted
City of Rochester

I, Valori Langseth, City Clerk, in and for the City of Rochester, do hereby certify that on the 10th day of September, 2014, the accompanying plat was duly approved by the Common Council of the City of Rochester. In testimony whereof, I have hereunto signed my name and affixed the seal of said City of Rochester this 10th day of September, 2014.

Valori Langseth
Aaron S. Reeves, City Clerk Deputy
Valori Langseth

PROPERTY RECORDS AND LICENSING

Taxes payable in the year 2014 on the land described herein have been paid, there are no delinquent taxes and transfer has been entered this 17th day of September, 2014.

DOCUMENT NUMBER A-1355064

I hereby certify that this instrument was filed in the Office of Property Records and Licensing for this record on this 11th day of September, 2014, at 12:12 o'clock P.M., and was duly recorded in the Olmsted County records.

W. Mark Knapaki
Director of Property Records & Licensing

Wendy von Wald
Deputy

NOTE:

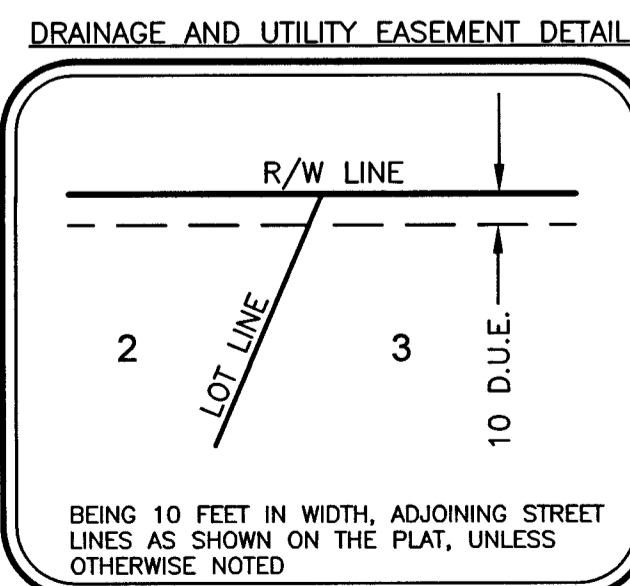
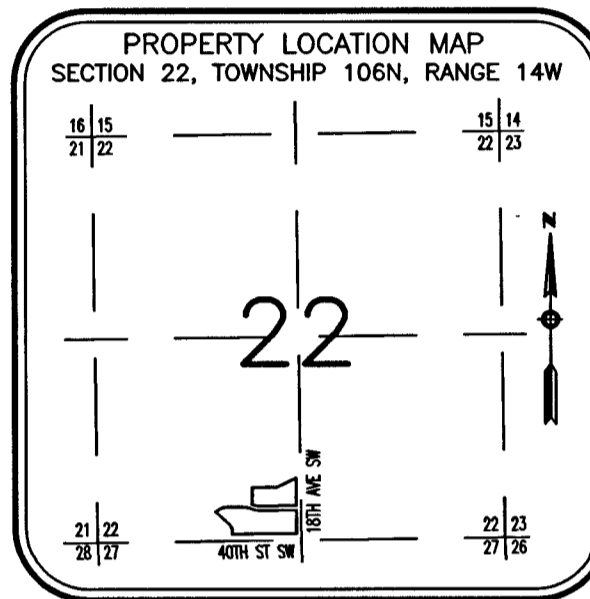
ALL MONUMENTS SHOWN THIS: ○
ARE 5/8" I.D. CAPPED PIPES WITH LICENSE NO. 18887 WHICH WILL BE SET WITHIN 1 YEAR AFTER RECORDING OF THIS PLAT.

ALL MONUMENTS SHOWN THIS: ●
ARE FOUND 5/8" PIPES UNLESS OTHERWISE NOTED.

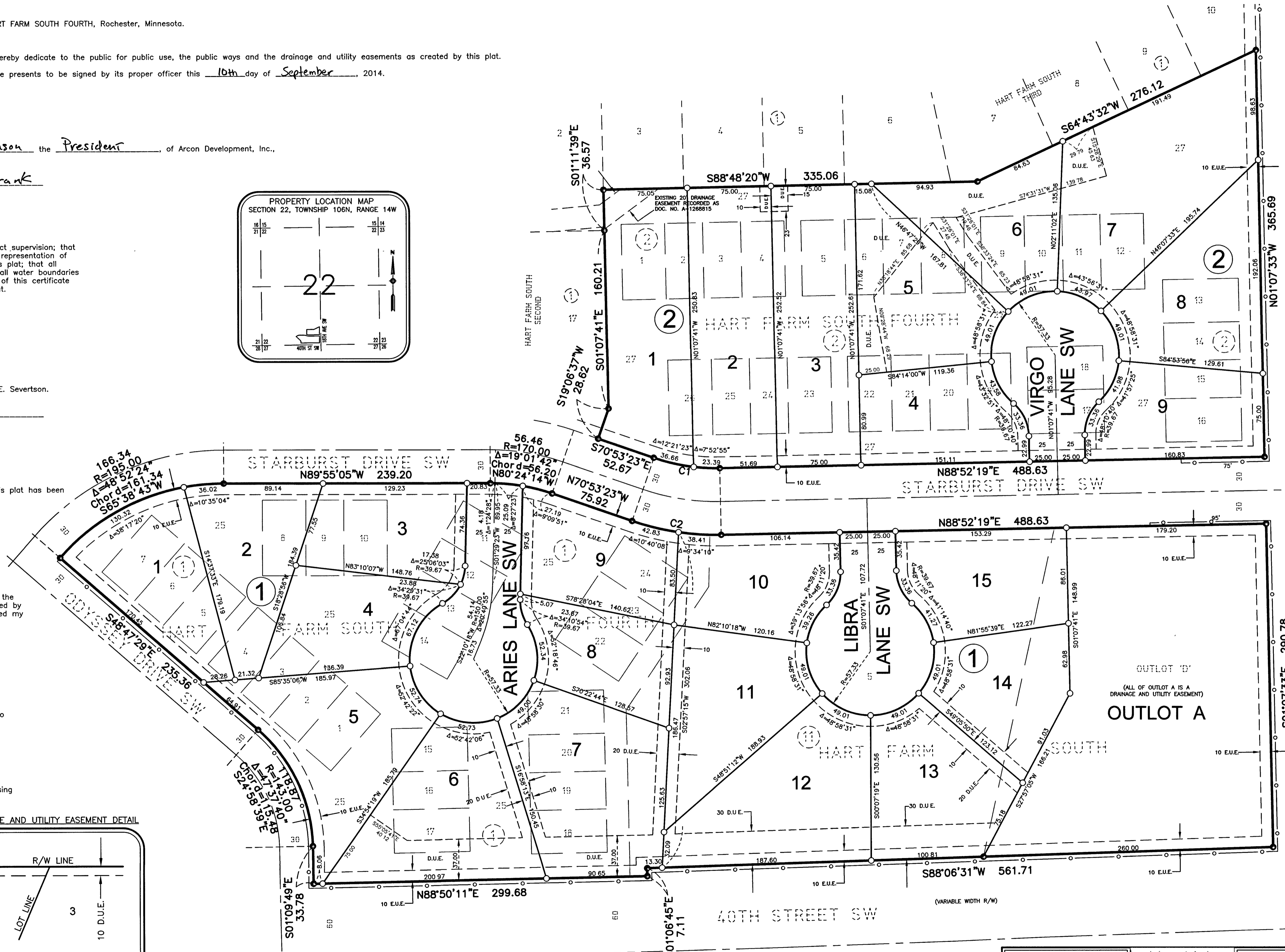
D.U.E. = DRAINAGE AND UTILITY EASEMENT

E.U.E. = EXISTING UTILITY EASEMENT

EXISTING CONTROLLED ACCESS = ○ — ○ — ○



CURVE	DELTA	LENGTH	RADIUS	CHORD	CHORD LENGTH
C1	20°14'18"	60.05	170.00	S81°00'32"E	59.74
C2	20°14'18"	81.24	230.00	N81°00'32"W	80.82



1290A

McGhie & Betts
1648 Third Avenue S.E.
Rochester, MN 55904
Telephone: 507-289-3919
Fax: 507-289-7333
mbi@mcghiebetts.com